



Stratigraphic Section: N° 8-11 LE CELLE - INTRESEGLIO

General Location: 157 IV SE Vieste

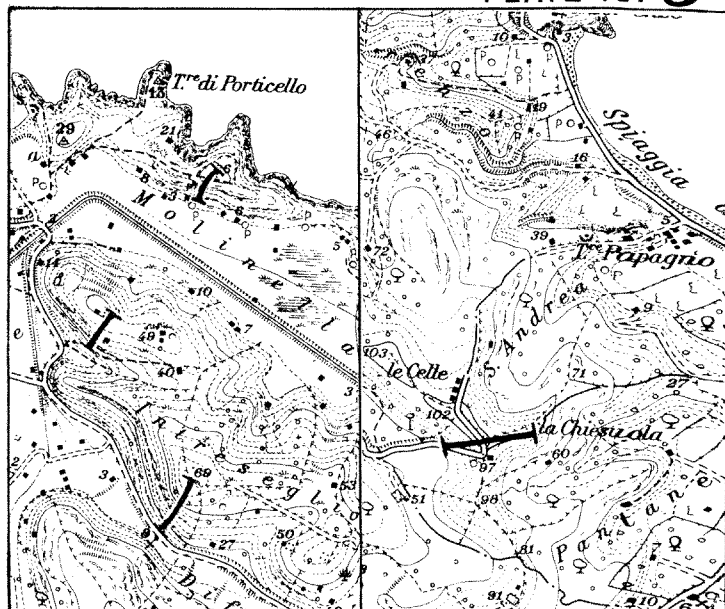
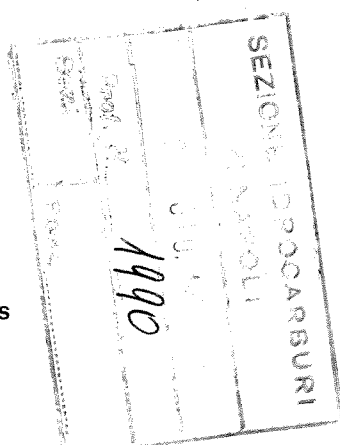
Measured by: A. ERCOLI - M. BELLINI

Date: 24-4-74

Method Measured: Jacob Staff and Brunton Compass

Scale: 1:400

Total Thickness: m. 47+82+38+29,50



Location Scale: 1:25000

Age	FM.	Sample N°	Meters	Lithology	Thickness	Lithologic Description	Shows	Biostratigraphy		
M I D D L E	P e s c h i c i a	I 24			2,5	Detrital-skeletal limestone as sample 20-23I, but better cemented & hard w/ very low porosity.		Nummulites, Discocyclinae.		
		I 23			20	Detrital-skeletal limestone "Tufo" type, fine grain, from subangular to subrounded, calcareous cement, medium cementation, generally friable, soft to the percussion, good porosity, light cream, w/ Mn oxides, well stratified in beds of 10-30 cm but w/ massive aspect.				
		I 22								
		I 21				27				
		I 20				0				
		I 19*							Micritic limestone as samples 13-16I, but w/ elements of larger size.	
		I 18*					16,5			
		I 17*					20			
		I 16*					5		Detrital-skeletal limestone as samples 1-5I.	
		I 15*							Micritic limestone as samples 13-16I.	
		I 14*					16,5			
		E O C E N E	N u m m u l i t i c i s	I 13*			0			
I 17						80				
I 16							2	Micritic limestone as sample C9.		
I 15							16	Micritic limestone apparently without fossils, w/ characteristics as sample C9, beds of 20-30 cm, very rich of Mn & Fe oxides, locally w/ zones lighter for alteration.		
I 14										
I 13										
I 12							60	Detrital-skeletal limestone as samples 1-5I. Sample 12 I belongs to a layer of about 4 m, probably stratified in beds of 1 m, forming key bed. Rare intercalations of micritic limestone as sample C9.		
I 11										
I 10										
I 9							26			
I 8										
C R E T A C E O U S	S c a g l i a , T y p e I s			I 7				40		
		I 6					4	Detrital, probably dolomitic, limestone, fine grain, medium light gray, beds of 30-40 cm w/ lenses of fossiliferous chert.		
		I 5						Detrital-skeletal limestone, fine grain but locally coarse, from angular to sub-rounded, well cemented w/ calcareous cement, hard-very hard, very low porosity, light cream, w/ Mn oxides, beds from 0,30 to 1,0 m, w/ massive aspect.		
		I 4								
		I 3					20			
		I 2								
		I 1					34			
		C 12					2	Detrital-skeletal limestone as sample C8.		
		C 11					2	Calcareous breccia, formed by elements of micritic limestone, coarse grain, apparently conformably interbedded in the series.		
		C 10								
		C 9					3	Micritic-skeletal limestone as samples C3-C7.		
		C 8					4	Detrital-skeletal limestone, medium grain, sub-angular, well cemented, hard, very low porosity, white, w/ Mn oxides, bedding 0,50 to 1 m.		
C 7										
C 6						Micritic limestone, hard, well cemented, locally brecciated, conchoidal fracturing, no porosity, white-light cream-buff, w/ Mn oxides, well bedded 8-15 cm, w/ massive aspect. More cemented & hard at the top.				
C 5										
C 4					20					
C 3										
C 2						4	Calcareous breccia, w/ very coarse elements, of the underlying lithotype, well cemented, calcareous cement, Mn oxides, bedding indistinct.			
C 1						6	Micritic limestone, hard to moderately hard, conchoidal fracturing, very low porosity, white, w/ Mn oxides, well stratified in bed from 5 to 20 cm w/ interbedded levels or lenses of chert.			

RISERVATO