



Stratigraphic Section: N° 5 MANACCORA

General Location: F° 157 IV NO Pèschici

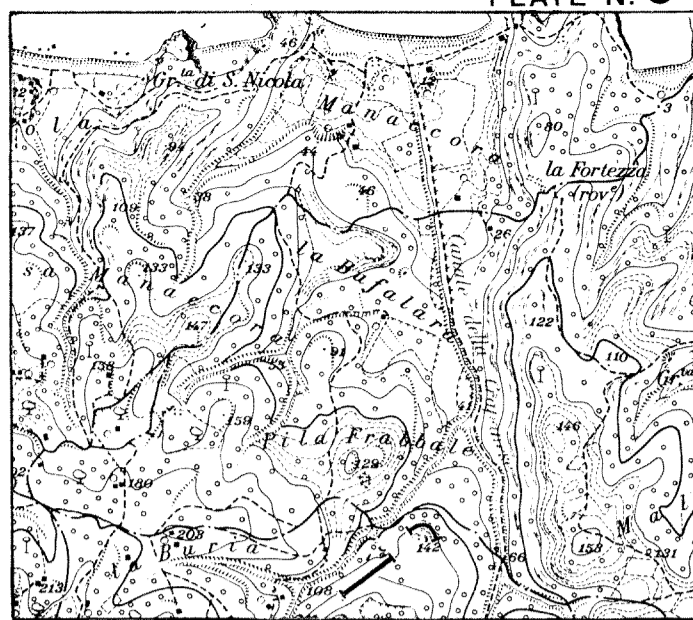
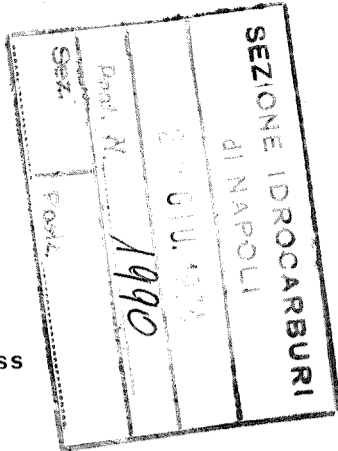
Measured by: A. ERCOLI - M. BELLINI

Date: 20 - 4 - 1974

Method Measured: Jacob Staff and Brunton Compass

Scale: 1:200

Total Thickness: m. 52.50



Location Scale: 1:25000

Age	FM.	Sample N°	Meters	Lithology	Thickness	Lithologic Description	Shows	Biostratigraphy
MIDDLE EOCENE	"Pèschici, Nummulitic ls"	M15	50		3	Micritic-skeletal limestone as sample M5.		Nummulites, Discocyclinae.
		M14			13	Detrital-skeletal limestone as sample M4.		
		M13	40					
		M12	ff			Micritic-skeletal limestone as sample M5, apparently massive.		Nummulites, Discocyclinae & fragment of Echinoids.
		M11	30			Micritic-skeletal limestone as sample M5.		
		M10			21			
		M9	20					
		M8			5	Covered.		
		M7	10		3	Detrital-skeletal limestone, massive w/ a calcareous breccia at the bottom. General features as samples M3 & M4.		
		M6			2.5	Micritic-skeletal limestone, hard-very hard, conchoidal fracturing, very low porosity, white-light buff, generally well bedded; fossils, always present, varying locally in frequency & size, Discocyclinae of 6-7 cm of diameter, locally Mn & Fe oxides.		
		M5			2.8	Detrital-skeletal limestone, well cemented w/ coarse elements, sub-rounded, calcareous cement, hard to moderately hard, low porosity, white-medium buff, beds from 0,50 to 3 m.		
		M4			2.2		Calcareous breccia w/ elements of micritic limestone, probably from the underlying formation, sub-angular, calcareous detrital-skeletal matrix w/ Nummulites, well cemented, hard, white-light buff, w/ Mn & Fe oxides.	
		M3						
		M2						
		M1					Micritic limestone, hard to moderately hard, conchoidal fracturing, no porosity, white-light buff, w/ Mn oxides, well stratified in beds from few cm to 20-30 cm, very fractured.	
CRETACEOUS	"Scaglia, type ls"							