



GEOMAP for MINERARIA TEXAS ITALIANA

PLATE N° 4

Stratigraphic Section: N° 4 COPPO DEI FOSSI (HILL SIDE)

General Location: F° 157 IV SO - Vico del Gargano

Measured by: A. ERCOLI - M. BELLINI

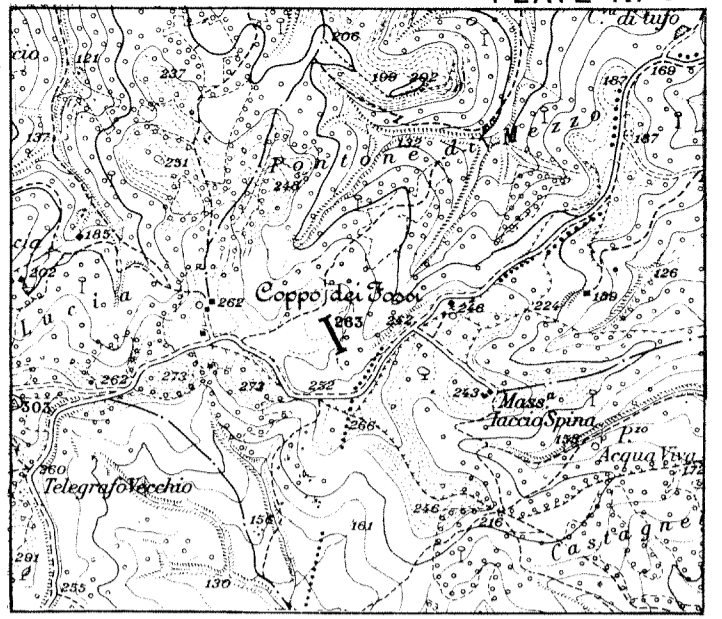
Date: 20-4-1974

Method Measured: Jacob Staff and Brunton Compass

Scale: 1:200

Total Thickness: m. 23,5

SEZIONE IDROCARBURI
 DI NAPOLI
 Prof. N. 22 GIU. 1974
 1990
 Sez. Pozz.



Location Scale: 1:25000

Age	F.M.	Sample N°	Meters	Lithology	Thick-ness	Lithologic Description	Shows	Biostratigraphy
MIDDLE EOCENE	"Pèschici, Nummulitic ls		30					
			E6		2,5	Detrital-skeletal limestone w/ small Nummulites, fine grained, well cemented w/ sub-rounded elements, hard, no porosity; white-light buff, beds from 2,5 to 1 m, w/ Mn oxides.		Nummulites, Discocyclinae.
CRETACEOUS	"Scaglia, type ls		E5		4	Micritic-skeletal limestone w/ Nummulites, very hard, conchoidal fracturing, no porosity, white-light buff, stratified in beds from 0,50 to 1 m.		
			E4			Micritic limestone, from hard to moderately hard, conchoidal fracturing, no porosity, white-cream, w/ Mn & Fe oxides, well stratified in beds from few cm to 0,5 m.		
			E3		22			
			E2					
			E1					

RISERVATO