
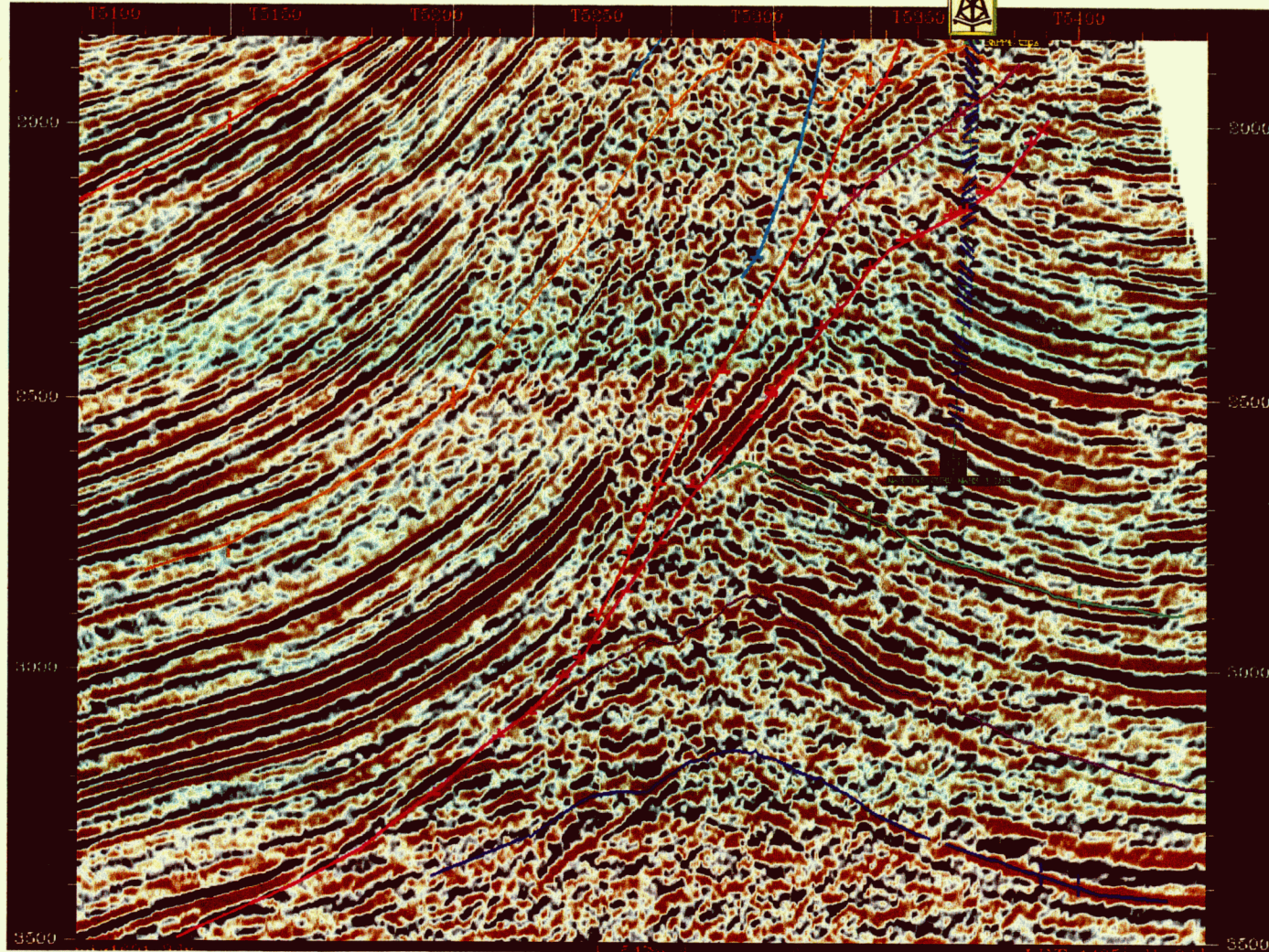




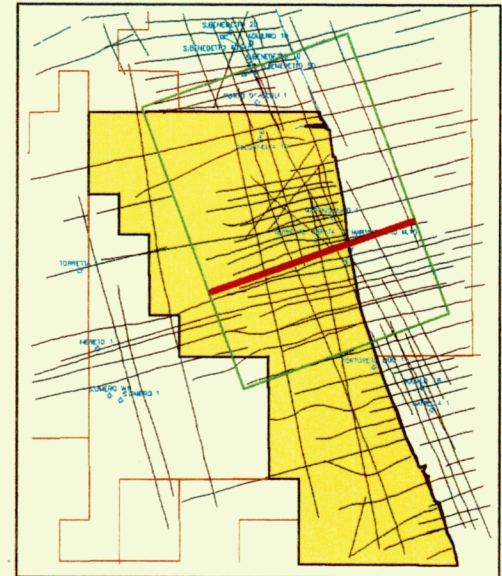
W

E

 **Martinsicuro Mare 1 Dir**



- 1 — Top sabbie basali Pliocene Sup.
- 2 — Unco Base Pliocene Superiore
- 3 — Unco Top Pliocene Inferiore
- 4 — Orizzonte @ 1.6 sec.
- 5 — Orizzonte @ 2.0 sec.
- 6 — Orizzonte @ 2.2 sec.
- 7 — Unco Top NPP3
- 8 — Intra Cellino
- 9 — Arenarie Eleonora 1 / Emilio 1
- 10 — Orizzonte @ 2.8 sec. subthrust
- 11 — Orizzonte @ 3.1 sec. subthrust
- 12 — Top Gessi



0 — 547 m