

LINE: CR92-10
4800% FILTERED MIGRATION
(WITH DAS)

358	95W
400	95W
450	95W
500	95W
550	95W
600	95W
650	95W
700	95W
750	95W
800	95W
850	95W
900	95W
950	95W
1000	95W
1050	95W
1100	95W
1150	95W
1190	95W

358	95W
400	95W
450	95W
500	95W
550	95W
600	95W
650	95W
700	95W
750	95W
800	95W
850	95W
900	95W
950	95W
1000	95W
1050	95W
1100	95W
1190	95W

358	95W
400	95W
450	95W
500	95W
550	95W
600	95W
650	95W
700	95W
750	95W
800	95W
850	95W
900	95W
950	95W
1000	95W
1050	95W
1100	95W
1190	95W

358	95W
400	95W
450	95W
500	95W
550	95W
600	95W
650	95W
700	95W
750	95W
800	95W
850	95W
900	95W
950	95W
1000	95W
1050	95W
1100	95W
1190	95W

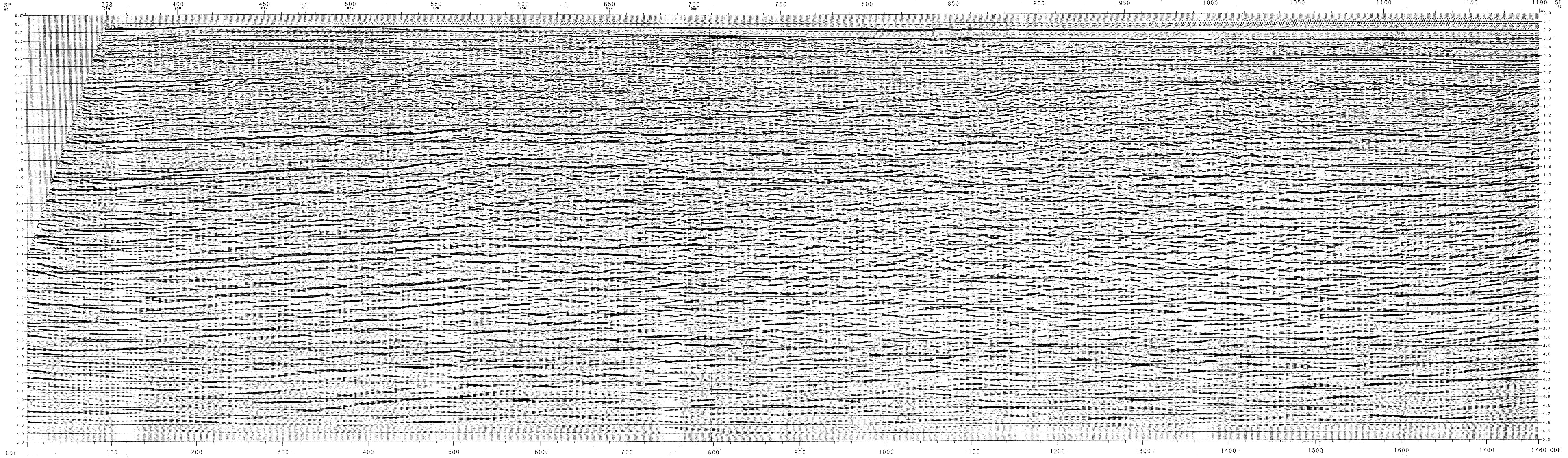
358	95W
400	95W
450	95W
500	95W
550	95W
600	95W
650	95W
700	95W
750	95W
800	95W
850	95W
900	95W
950	95W
1000	95W
1050	95W
1100	95W
1190	95W

358	95W
400	95W
450	95W
500	95W
550	95W
600	95W
650	95W
700	95W
750	95W
800	95W
850	95W
900	95W
950	95W
1000	95W
1050	95W
1100	95W
1190	95W

358	95W
400	95W
450	95W
500	95W
550	95W
600	95W
650	95W
700	95W
750	95W
800	95W
850	95W
900	95W
950	95W
1000	95W
1050	95W
1100	95W
1190	95W

SEZIONE IROCARBURI
E GEOTERMA DI NAPOLI
23 DIC. 1992
Prot. N. 8365

LINE: CR92-10
SP 358 TO SP 1190
SOUTHEAST
4800% FILTERED MIGRATION
(WITH DAS)



Enclosure 5

Enterprise Oil

AREA
OFFSHORE SICILY
PERMIT C. 1136 ET

WESTERN
GEO-TECHNICAL

U.S. CONTRACT
NO. 1000
PROCESSED IN LONDON DIGITAL CENTER, SEPTEMBER 1992

RECORDING DATA	PROCESSING SEQUENCE
<p>WELL:</p> <p>SEVENTH SOURCE:</p> <p>INSTRUMENTS:</p> <p>CABLE:</p>	<p>ACQUISITION:</p> <p>NOISE ATTENUATION:</p> <p>DECONVOLUTION:</p> <p>PREPROCESSOR (P.B.S.):</p> <p>STRETCHING:</p> <p>VELOCITY ANALYSIS:</p> <p>STRETCHING:</p> <p>DECONVOLUTION:</p> <p>DECONVOLUTION:</p> <p>SCALES:</p> <p>LEGEND:</p>

