

TIME	RMSV
300	1500
450	1800
600	2100
750	2400
900	2700
1050	3000
1200	3300
1350	3600
1500	3900
1650	4200
1800	4500
4010	4319

TIME	RMSV
300	1500
450	1800
600	2100
750	2400
900	2700
1050	3000
1200	3300
1350	3600
1500	3900
1650	4200
1800	4500
4010	4319

TIME	RMSV
300	1500
450	1800
600	2100
750	2400
900	2700
1050	3000
1200	3300
1350	3600
1500	3900
1650	4200
1800	4500
4010	4319

TIME	RMSV
300	1500
450	1800
600	2100
750	2400
900	2700
1050	3000
1200	3300
1350	3600
1500	3900
1650	4200
1800	4500
4010	4319

TIME	RMSV
300	1500
450	1800
600	2100
750	2400
900	2700
1050	3000
1200	3300
1350	3600
1500	3900
1650	4200
1800	4500
4010	4319

TIME	RMSV
300	1500
450	1800
600	2100
750	2400
900	2700
1050	3000
1200	3300
1350	3600
1500	3900
1650	4200
1800	4500
4010	4319

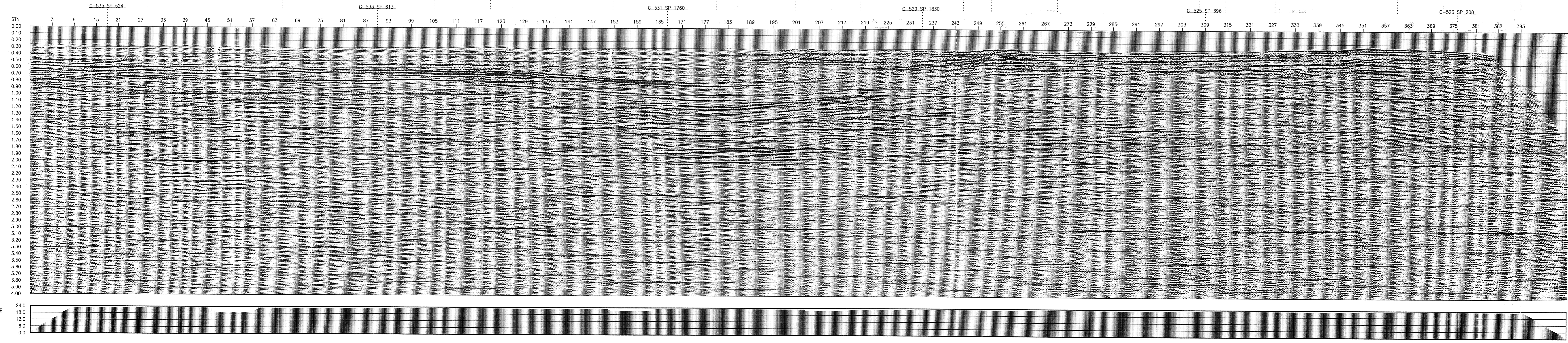
TIME	RMSV
300	1500
450	1800
600	2100
750	2400
900	2700
1050	3000
1200	3300
1350	3600
1500	3900
1650	4200
1800	4500
4010	4319

TIME	RMSV
300	1500
450	1800
600	2100
750	2400
900	2700
1050	3000
1200	3300
1350	3600
1500	3900
1650	4200
1800	4500
4010	4319

TIME	RMSV
300	1500
450	1800
600	2100
750	2400
900	2700
1050	3000
1200	3300
1350	3600
1500	3900
1650	4200
1800	4500
4010	4319

TIME	RMSV
300	1500
450	1800
600	2100
750	2400
900	2700
1050	3000
1200	3300
1350	3600
1500	3900
1650	4200
1800	4500
4010	4319

SEZIONE IDROCARBURI  
E GEOTECNICA DI NAPOLI  
23 DIC. 1992  
Prot. N. 8365



Enclosure 1

NE  
0°

**Enterprise Oil**

**geitalia**

AREA : CANALE DI SICILIA  
LINE: C-574  
SP : 03-01-1-393  
24 FOLD  
STACK

FIELD INFORMATION

SHOT BY: WESTERN GEOLOGICAL  
DATE RECEIVED: JUNE 1988

TYPE OF SOURCE: SOURCE DEPTH: 15 m  
SP INTERVAL: 70 m

RECORDING SYSTEM: 049 300  
LOW CUT FILTER: 10 Hz @ 48dB  
HIGH CUT FILTER: 80 Hz @ 48dB  
RECORD LENGTH: 2 sec  
SAMPLE RATE: 2 ms

CABLE: 74  
GROUP INTERVAL: 70 m  
CABLE DEPTH: 15 m  
CABLE LENGTH: 1620 m

PROCESSING SEQUENCE

DATE PROCESSING: JULY 1997

4 POPS PER SHOT  
PROCESSING SAMPLE RATE: 4 ms  
PROCESSING RECORD LENGTH: 4000 ms

PREPROCESSOR

CORRECTION OF SPHERICAL DIVERGENCE

TIME VARIANT SCALING

S/N ENHANCEMENT FILTER ROUTINE

F-K FILTER

D.B.S.

DECON VIBE MULTIPLEX INVERSE FILTER

VELOCITY ANALYSIS

D.M.O.

INVERSE N.M.O.

FINAL VELOCITY ANALYSIS

N.M.O. STACK

TRACE INTERPOLATION

CSP INTERNAL INPUT: 35 m  
CSP INTERNAL OUTPUT: 17.5 m

TIME VARIANT FILTER

TIME VARIANT SCALING

DISPLAY PARAMETERS

HORIZONTAL SCALE: 1:25000  
VERTICAL SCALE: 5 cm/sec  
PLOT DIRECTION: L TO R

COMMENTS

DATA PLANE IS SEA LEVEL. A DUN AND GALE GALE DEPTH CORRECTION OF 4 m  
HAS BEEN APPLIED IN THE PREPROCESSOR CORRECTION PHASES RECORDED AS  
POSITIVE NUMBER ON THE AND PLOTTED AS NEGATIVE

Q.C. FOR GEOTECNICA