

LINE: C-88-314

SP 389 TO SP 100

WEST

FILTERED STACK

SEZIONE IDROCARBURI  
E GEOTERMIA DI NAPOLI

23 AGO. 1989

Prot. N. 006800

LINE: C-88-314  
SP 389 TO SP 100  
FILTERED STACK

# Petrex

AREA: OFFSHORE SICILY, BLOCK C.R.128.SE



W.G.C. CONTRACT  
DATE SHOT: DECEMBER 1988  
PROCESSED IN LONDON DIGITAL CENTRE MAY 1989

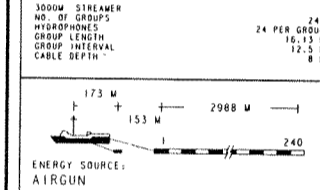
### RECORDING DATA

**BOAT**  
GEO CODE  
FIELD NAVIGATION BY  
SECONDARY NAVIGATION BY  
MAP/SECTION LOCATION

**ENERGY SOURCE**  
AIRGUNS  
VOLUME  
PRESSURE  
SOURCE DEPTH  
NO. OF SUBARRAYS  
TOTAL NO. OF GUNS  
JUG INTERVAL  
POPS PER WELL

**INSTRUMENTS**  
FIELD RECORDER  
RECORD LENGTH  
FILTER  
SAMPLE INTERVAL  
PSTR

**CABLE**  
3000M STREAMER  
NO. OF GROUPS  
HYDROPHONES  
CABLE LENGTH  
GROUP INTERVAL  
CABLE DEPTH



**HORIZONTAL SCALES**

1:12,500	1:25,000
10 CM/SEC	5 CM/SEC
0	0.5
KILOMETRE	

**LEGEND**  
INTERSECTIONS  
WD WATER DEPTHS  
I VELOCITY FUNCTION

D.C. FOR W.G.C. *L. P. Jolly*

### PROCESSING SEQUENCE

PROCESSING SAMPLE INTERVAL 4 MS  
PROCESSING RECORD LENGTH 6000 MS  
SEG TO CODE 4 CPT  
SUBSAMPLE TO 4 MS

**PREPROCESSOR - D.B.S.**  
1.1: COUNTR DEPTH FAMILY GATHER  
1.2: COUNTR DEPTH SPECIFIC GAIN APPLIED  
1.3: INSTRUMENT S.C. 5/18 1/2.00/OCT/ H.C. 1/ 75/48  
1.4: DECONVOLUTION MINIMUM PHASE INVERSE FILTER  
WINDOW LENGTH 1 x 3000 MS  
MINIMUM PREDICTIVE LAG 224 MS  
1.5: WHITE NOISE DISTANCE  
1.6: TRACE BALANCE ON OUTPUT

### WMO VELOCITY ANALYSIS

**WMO VELOCITY ANALYSIS**  
WMO VELOCITY ANALYSIS  
CABLE  
24 PER GROUP  
16.33 M  
72.3 M

### NOISE ATTENUATION

PERFORMED IN THE F/X DOMAIN  
PASSING DIVS TO 10 MS/TRACE  
TAPER WIDTH 10 MS/TRACE  
DIP LIMITS AT 10 DB PERCENT

TIME (SEC)	PERCENT FILTER
0.004	0
2.000	100
6.000	100

### TIME VARIANT FILTER

TIME (SEC)	I.C.	1/2.00/OCT/ H.C.
0.004	12 / 24	70 / 48
2.000	5 / 24	50 / 48
6.000	5 / 24	40 / 48

FILTERS ARE INTERPOLATED IN TIME AND SPACE  
TIMES SPECIFIED APPLY TO START OF LINE

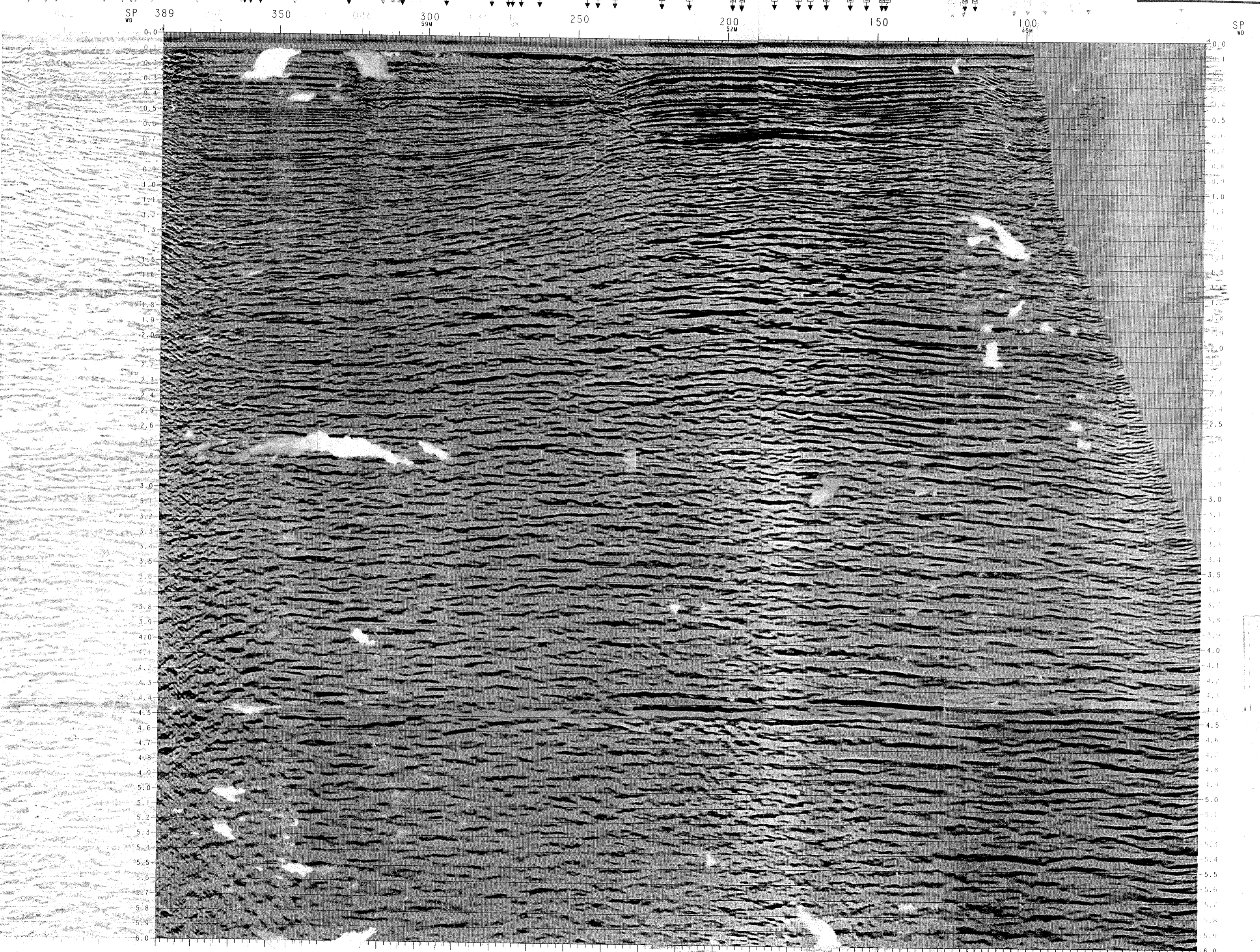
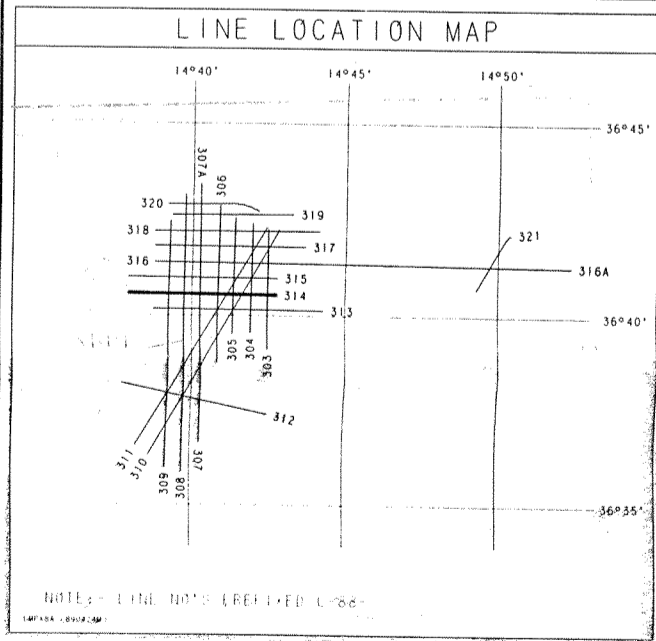
### SCALING

GENERAL USER WAVEFORM  
WINDOW LENGTH 1000 MS  
GAINED USED WITH EXPONENT P = -1  
DESIRED OUTPUT EXPONENT G = 0.5

### COMMENTS

DATE/TIME PLANE IS SEA LEVEL.  
A 5CM AND CABLE CORRECTION OF 9 MS HAS  
BEEN APPLIED TO THE TIME/DIP/CORR  
COMPRESSION PULSES RECORD AS NEGATIVE NUMBERS  
ON SAFE AND PLOT AS NEGATIVE VALUES  
ON PLATEBOOK.

W.G.C. INPUT DATASET: 05401



008 024 CD CDF 31396 1350 1300 1250 1200 1150 1100 1050 1000 950 900 850 800 750 700 650 600 550 500 450 400 350 300 250 200 150 100 50 1 CDF