

LINE TX-24  
SPS 101-535

N.E.  
DIRECTION OF SHOOTING

6000% STACK

TEXACO PETROLEUM  
PENN GEOPH. CONSULTANTS  
SICILY 1985 PERMIT CR-119-TX

SP 98.5

TIME	VRMS	INTV
0	1500	1500
220	1500	1663
550	1600	2637
950	2100	3840
1550	2900	5409
1900	3500	5991
2500	4200	5333
5000	4800	

SP 218.5

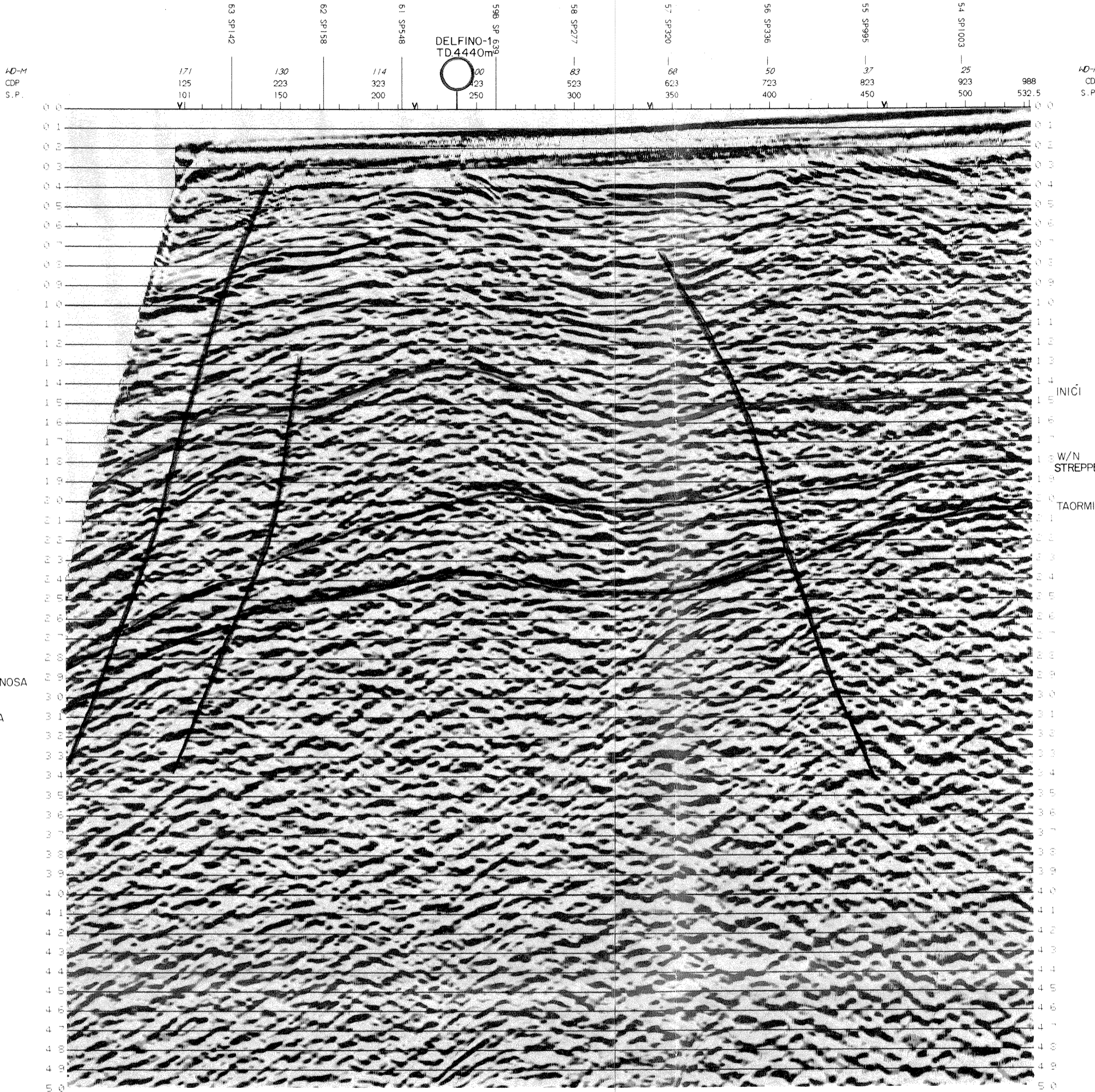
TIME	VRMS	INTV
0	1500	1500
150	1500	1720
450	1650	2597
950	2200	3734
1300	2700	4323
1900	3300	4933
2400	3700	5628
5000	4800	

SP 338.5

TIME	VRMS	INTV
0	1500	1500
100	1500	2016
400	1900	3474
800	2800	4907
1200	3200	4768
1600	3500	5751
2200	3900	
3250	4200	
5000	4800	

SP 458.5

TIME	VRMS	INTV
0	1500	1500
50	1500	1854
300	1800	3232
750	2750	4964
1200	3200	3834
2150	3700	4248
2725	4000	4964
5000	4800	5610



<p>GeoCenter Houston, Texas</p>	DATE PROCESSED <u>JULY, 1986</u>				
	REEL NUMBER <u>1660</u>				
	CONTRACT NUMBER <u>6056</u>				
<b>FIELD RECORDING</b>					
RECORDED BY <u>GECO M/V GECO RHO</u>	SYSTEM <u>DSSV/DFSV/NORD</u>				
DATE <u>NOVEMBER, 1985</u>	GAIN <u>1FP</u>				
FORMAT <u>SEGD 8048</u>	DEPTH <u>10M</u>				
ENERGY SOURCE					
TYPE <u>AIRGUN 6276 CU IN 2000 PSI</u>					
ARRAY					
STREAMER					
LENGTH <u>3000M</u>	NO. TRACES <u>120</u>				
DEPTH <u>10M</u>	GROUP INTERVAL <u>25M</u>				
ARRAY <u>IN LINE</u>	GEOPH/TR OVER <u>25M</u>				
PARAMETERS					
RECORDING FOLD <u>60</u>	S. P. SPACING <u>25M</u>				
SAMPLE INTERVAL <u>2MS</u>	RECORD LENGTH <u>55SECOND</u>				
RECORDING FILTER <u>LO-3.5HZ HI-128HZ</u>					
<b>DIGITAL PROCESSING</b>					
SEQ	PROCESS	PARAMETERS			
1	REFORMAT	SEGD-SEGY Q/P 5SEC @ 4MS			
2	STATIC	+13MS GAIN-CABLE CORRECTION			
3	AGC	500MS AGC			
4	F.N. FILTER	REJECT DIPS 6-14MS/TR			
5	DECONVOLUTION	SEE BELOW			
6	CDP SORT	6000 % GATHER			
7	VELOCITY ANALYSIS	1 PER 2KM			
8	NO. MUTE	NORMAL MOVEOUT+MUTE APPLICATION			
9	BEAM STEERING	5 TR HEIGHTS 1 3 5 3 1			
10	CDP STACK	6000% STACK			
11	FILTER	SEE BELOW			
12	T.V. SCALING	EXPANDING WINDOW 40%			
DECON	OPERATOR LENGTH	PREDICTIVE GAP	DERIVATION WINDOWS	APPLICATION WINDOWS	ADDITIONAL PARAMETERS
5	180	12	0-4000 FOLLOW H.B	TRACE LENGTH	
FILTER	CUT OFF POINT	6 DB POINT	8 DB POINT	CUT OFF POINT	APPLICATION TIMES FOR SHOTPOINTS SPECIFIED
11	4	6	50	80	
<p>ALL TIMES IN HILLISECONDS ALL FREQUENCIES IN HERTZ          FILTERS INTERPOLATED LINEARLY BETWEEN APPLICATION TIMES          APPLICATION TIMES INTERPOLATED LINEARLY BETWEEN SHOTPOINTS          *OPERATOR LENGTH GIVEN IS ACTIVE LENGTH +ADD GAP FOR TOTAL LENGTH</p>					
SAMPLE RATE: 4MS; DATUM CORRECTION: +13MS					
SCALES: HORIZONTAL 40TR/CM VERTICAL 5CM/SEC					
RECORDING POLARITY: PRESSURE INCREASE IS -VE NUMBER					
PROCESSING POLARITY: POSITIVE NO. GIVES BLACK PEAK					

INIĆI

INIĆI

W/N STREPPENOSA

W/N STREPPENOSA

TAORMINA

TAORMINA

SEZIONE IDROCARBURARI  
DI NAPOLI  
19 DIC. 1985  
1 t t t t  
Posiz.  
Scaz.