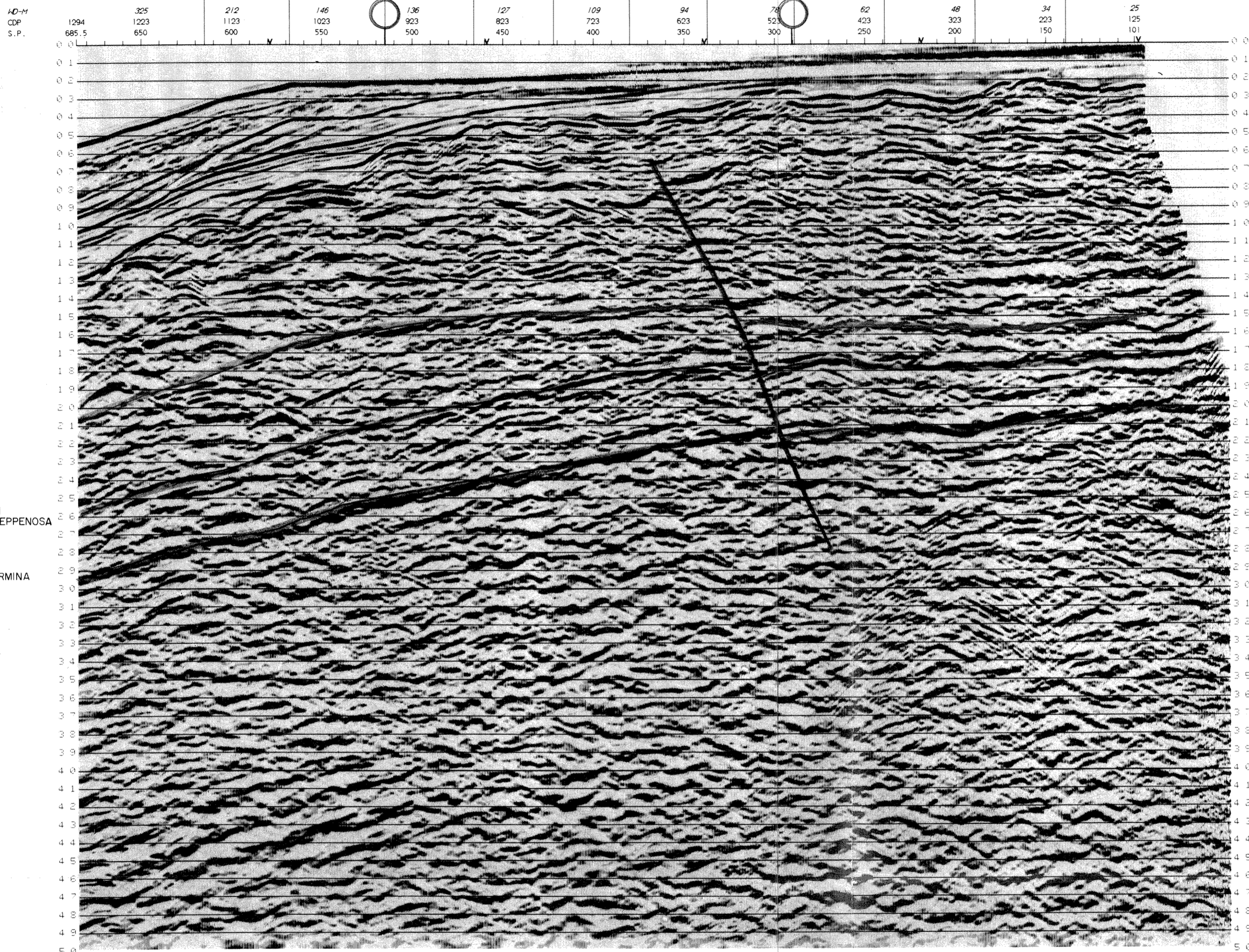


TEXACO PETROLEUM  
PENN GEOPH. CONSULTANTS  
SICILY 1985 PERMIT CR-119-TX

SP 578.5			SP 458.5			SP 338.5			SP 218.5			SP 98.5		
TIME	VRMS	INTV	TIME	VRMS	INTV	TIME	VRMS	INTV	TIME	VRMS	INTV	TIME	VRMS	INTV
0	1500	1500	0	1500	1500	0	1500	1500	0	1500	1500	0	1500	1500
200	1500	1806	180	1500	1981	120	1500	2078	80	1500	2125	50	1500	2125
600	1700	2048	350	1750	2305	350	1900	2326	300	1900	2326	220	2000	2673
820	1800	2880	600	2000	2690	600	2000	2900	550	2600	3247	500	2400	3692
1200	2200	4218	1250	3000	3288	1800	3600	4397	1050	3200	3751	850	3000	3692
1480	2700	4702	1500	3300	4200	1800	3600	4556	1850	3600	4066	1250	3300	3861
1850	3200	4695	2500	3750	5114	2900	4000	4621	2900	4000	4621	1800	3600	4281
2400	3600	4605	3550	4200	5457	5000	4600	5347	5000	4600	5318	3100	3900	4203
3300	3900	5719	5000	4600					5000	4600		5000	4600	5556



		DATE PROCESSED JULY 1986 REEL NUMBER 1840 CONTRACT NUMBER 6056	
<b>FIELD RECORDING</b>			
RECORDED BY	GECO M/V GECO RHO		
DATE	NOVEMBER 1985	SYSTEM	DSSV/DFSV/NORD
FORMAT	SEGD 8048	GAIN	1FP
<b>ENERGY SOURCE</b>			
TYPE	AIRGUN 6276 CU IN 2000 PSI		
ARRAY	DEPTH 10M		
<b>STREAMER</b>			
LENGTH	3000M	NO. TRACES	120
DEPTH	10M	GROUP INTERVAL	25M
ARRAY	IN LINE	GEOPH/TR OVER	25M
<b>PARAMETERS</b>			
RECORDING FOLD	60	S. P. SPACING	25M
SAMPLE INTERVAL	2MS	RECORD LENGTH	55SECOND
RECORDING FILTER	LO-3.5HZ HI-128HZ		
<b>DIGITAL PROCESSING</b>			
SEQ	PROCESS	PARAMETERS	
1	REFORMAT	SEGD-SEGI 0.7P 5SEC @ 4MS	
2	STATIC	+1.3MS GUN/CABLE CORRECTION	
3	AGC	500MS AGC	
4	F.A. FILTER	REJECT DIPS 6-14MS/TR	
5	DECONVOLUTION	SEE BELOW	
6	CDP SORT	8000 X GATHER	
7	VELOCITY ANALYSIS	1 PER 30M	
8	WIGWAG	NORMAL MOVEOUT/WHITE APPLICATION	
9	BEAM STEERING	5 TR HEIGHTS 1.3 3 3 3 1	
10	CDP STACK	8000X STACK	
11	SIGNALIZE	S/N ENHANCEMENT 3MS TR	
12	DECONVOLUTION	SEE BELOW	
13	FILTER	SEE BELOW	
14	T.V. SCALING	EXPANDING WINDOW 4M	
DECON	OPERATOR LENGTH	PREDICTIVE GAP	DERIVATION WINDOWS APPLICATION WINDOWS
5	180	12	0-4000 FOLLOW N B TRACE LENGTH
11	200	24	0-4000 FOLLOW N B TRACE LENGTH
FILTER	CUT OFF POINT	6 DB POINT	8 DB POINT
12	4	8	80
ALL TIMES IN MILLISECONDS ALL FREQUENCIES IN HERTZ FILTERS INTERPOLATED LINEARLY BETWEEN APPLICATION TIMES APPLICATION TIMES INTERPOLATED LINEARLY BETWEEN SHOTPOINTS *OPERATOR LENGTH GIVEN IS ACTIVE LENGTH ADD GAP FOR TOTAL LENGTH			
SAMPLE RATE: 4MS; DATUM CORRECTION: +1.3MS			
SCALES: HORIZONTAL 40TR/CM VERTICAL 50M/SEC			
RECORDING POLARITY: PRESSURE INCREASE IS -VE NUMBER			
PROCESSING POLARITY: POSITIVE NO. GIVES BLACK PEAK			

Sez. 177  
Prot. N. 13 DIC. 1988  
di VPOLI  
SEZIONE GEOARREARI