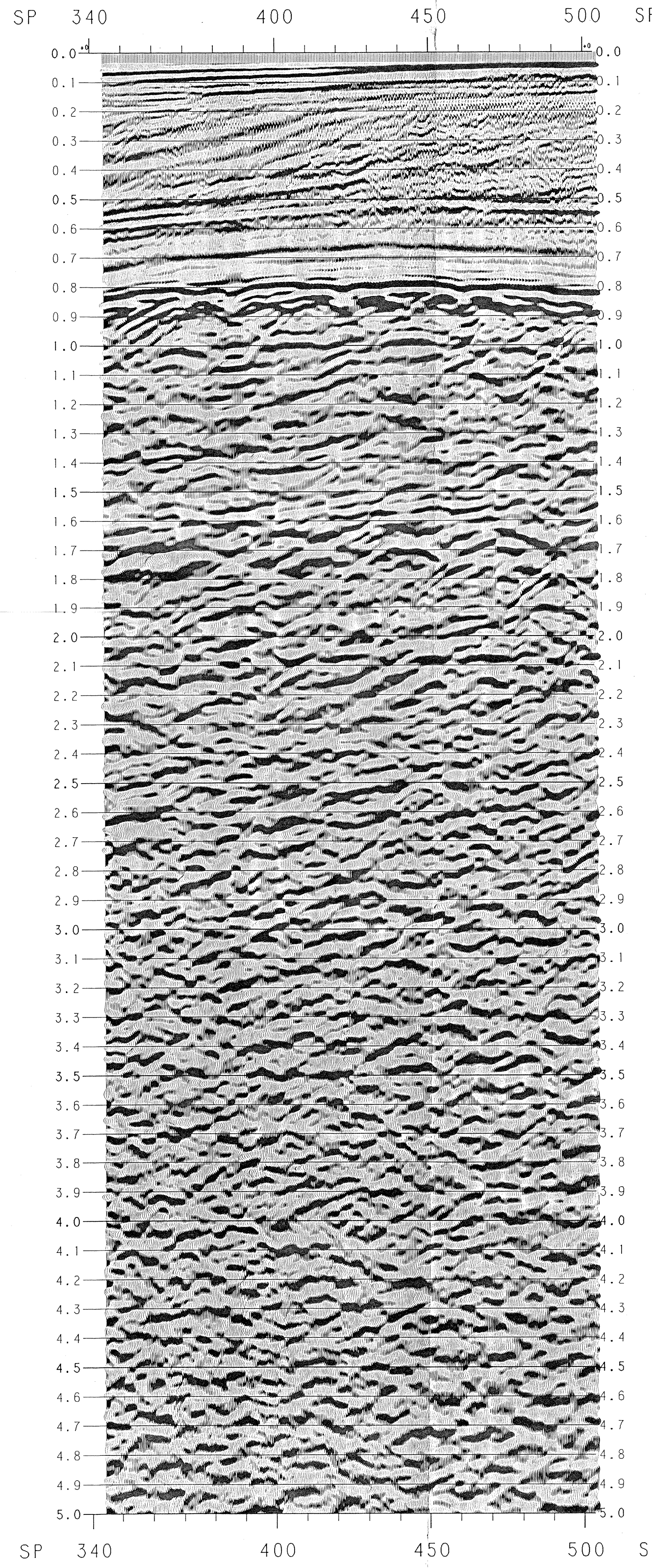
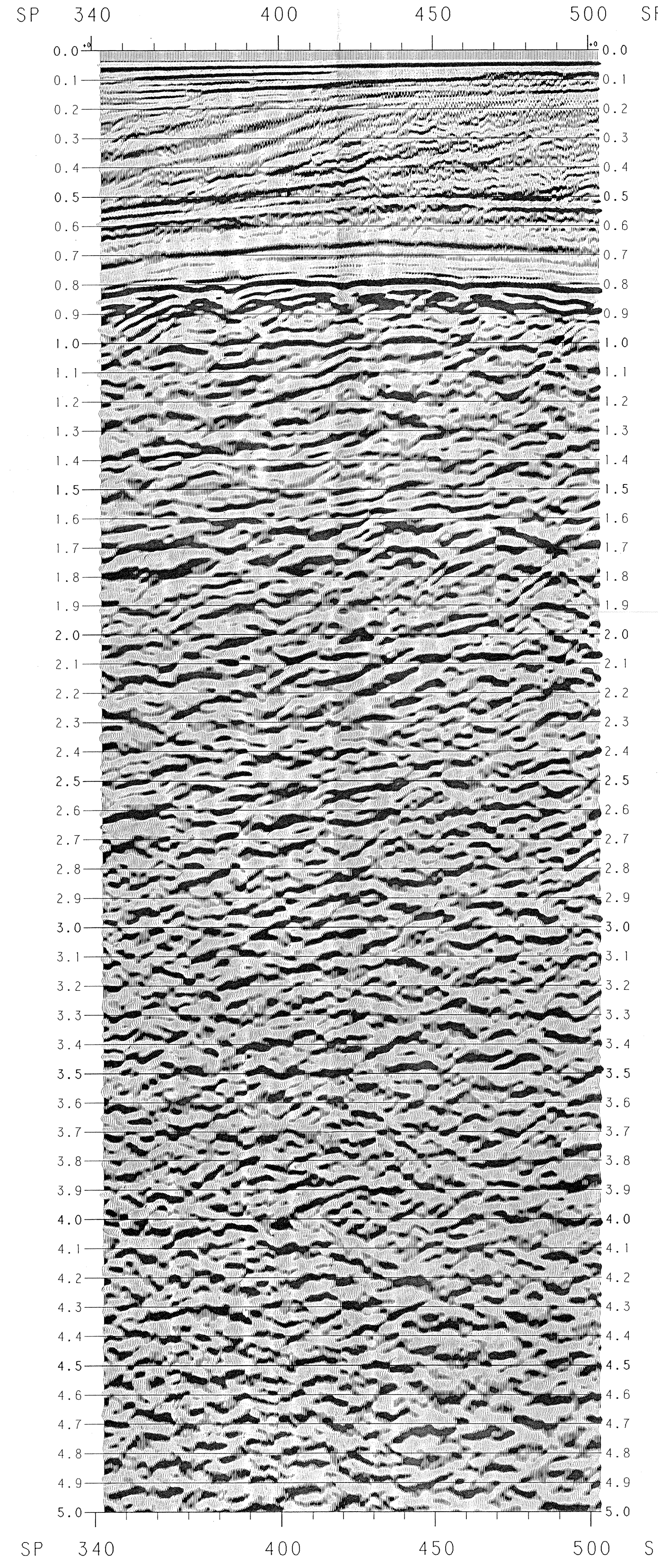


NO BEAMSTEER



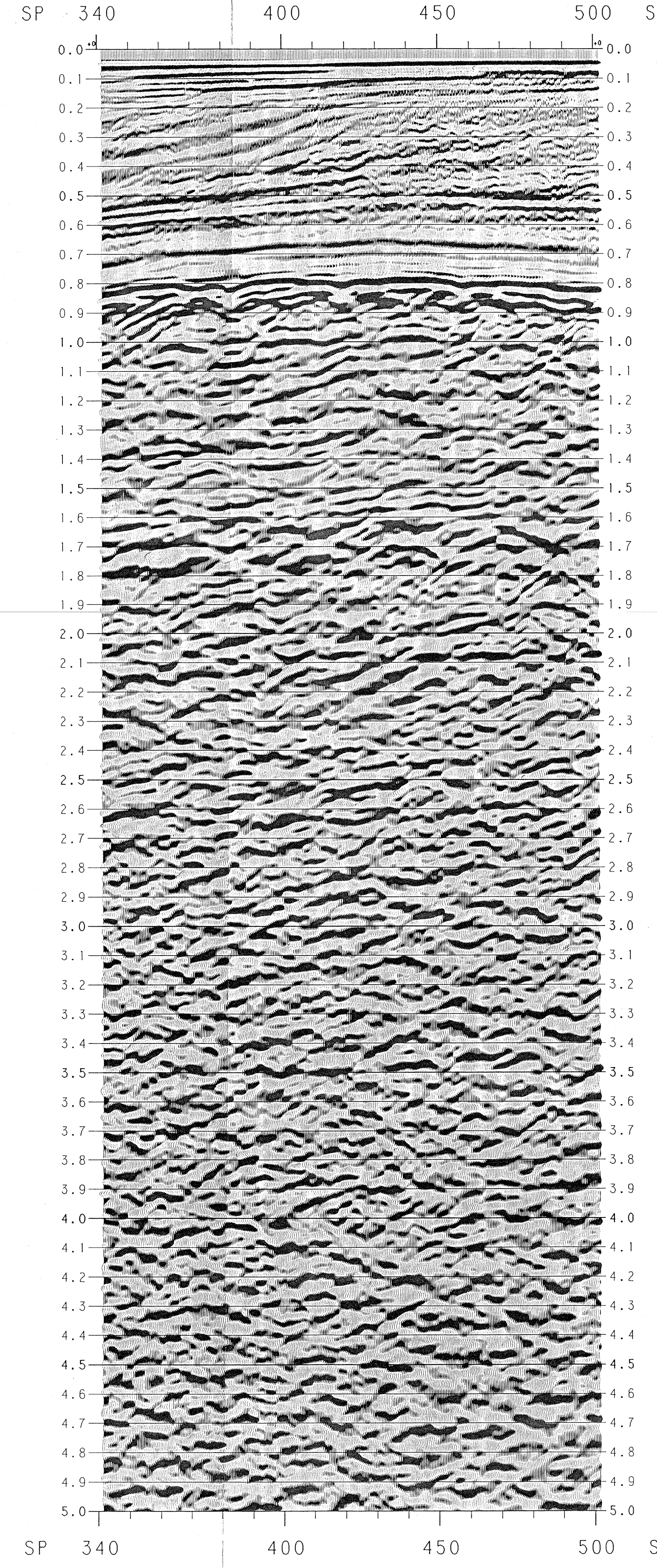
TEST NO. 1

WEIGHT FUNCTION
1 : 5 : 1



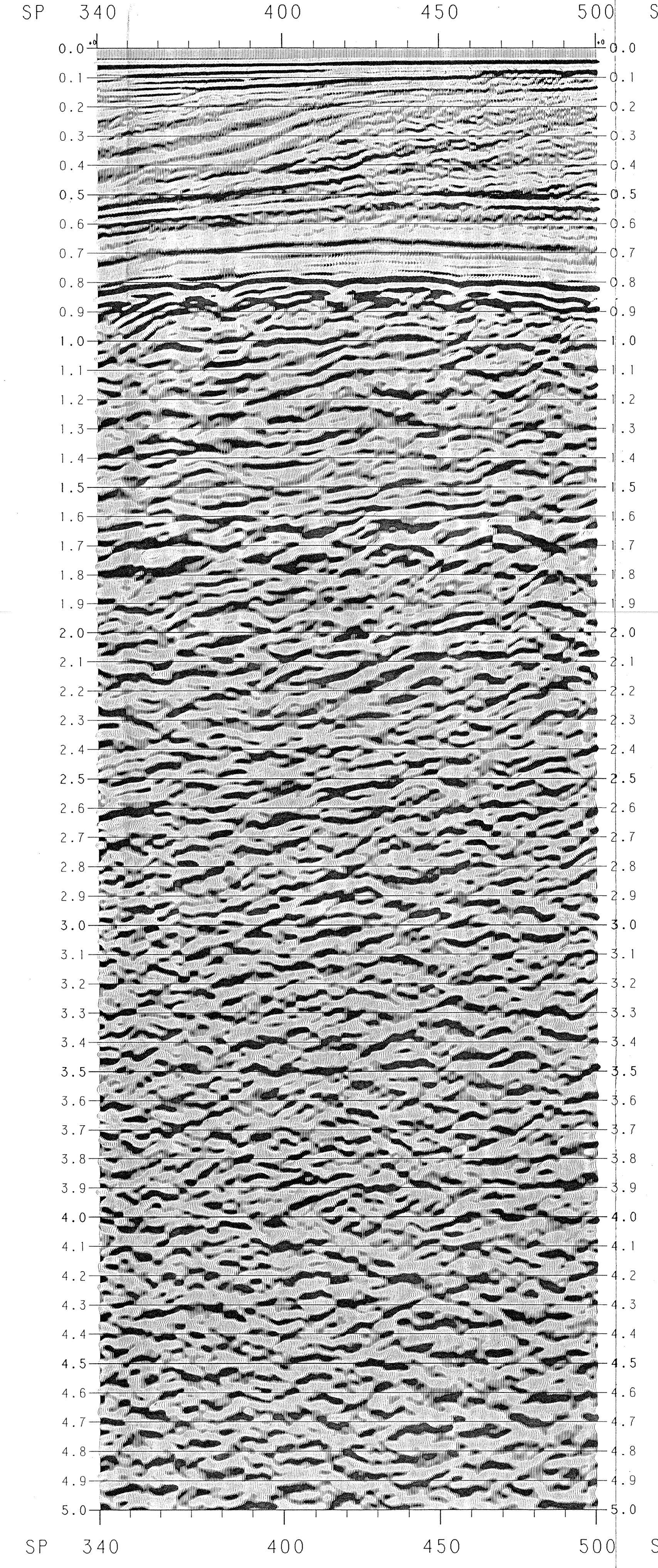
TEST NO. 2

WEIGHT FUNCTION
1 : 2 : 1



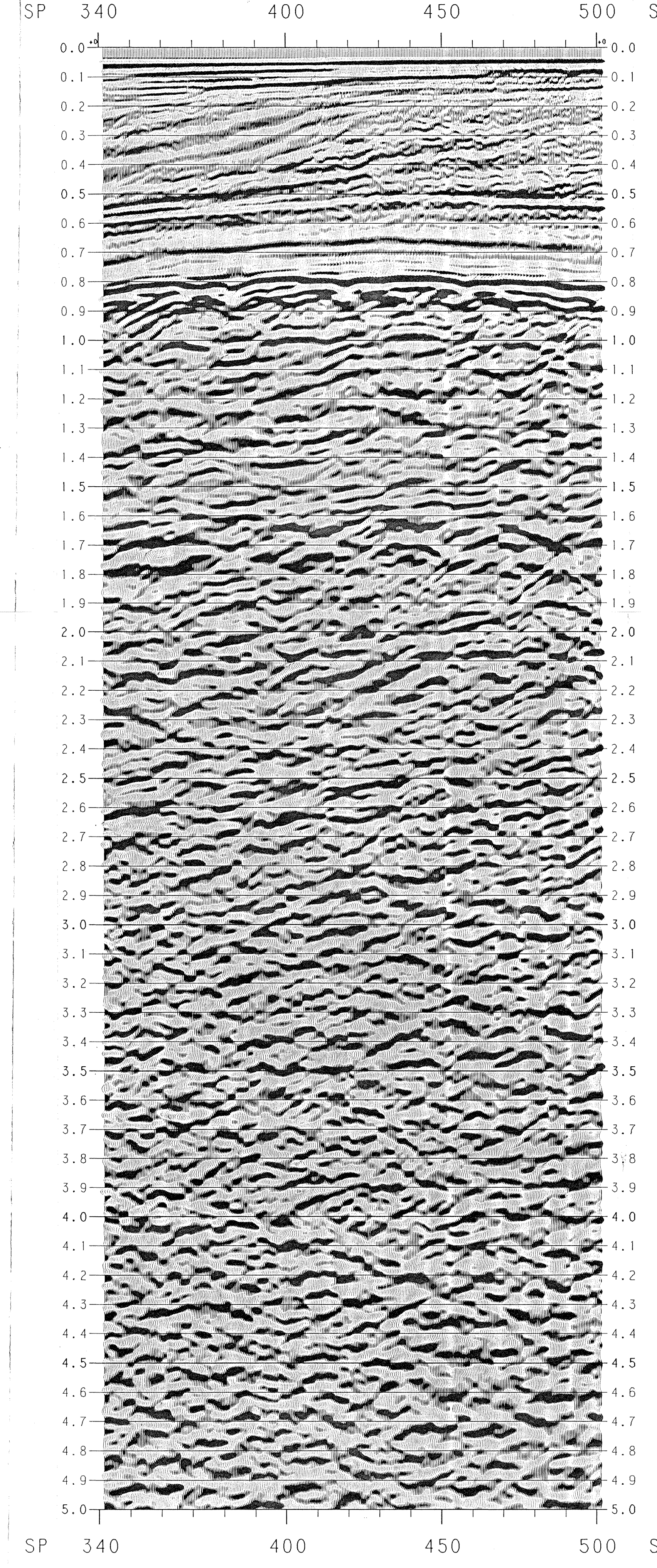
TEST NO. 3

WEIGHT FUNCTION
1 : 2 : 3 : 2 : 1



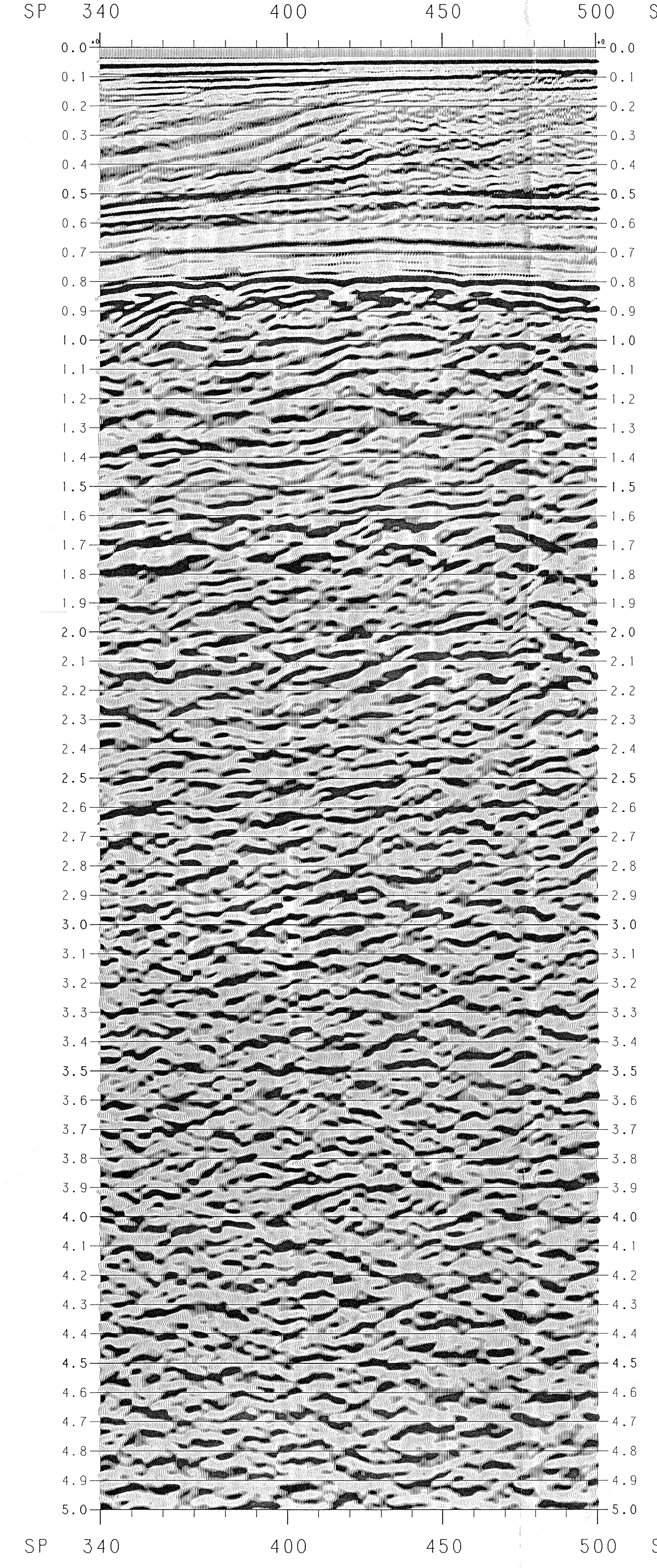
TEST NO. 4

WEIGHT FUNCTION
1 : 1 : 1



TEST NO. 5

WEIGHT FUNCTION
1 : 1 : 1 : 1 : 1



REGIONE TERRITORIALE
E GEOMETRIA DI NAPOLI
17.100.000
Prot. N. 4151

PROCESSING TEST NO. 4
BEAMSTEER TEST
NEW TVF

TEXACO NETHERLANDS INTERNATIONAL INC.

Western Geophysical

SICILY : BLOCK CR-119-TX

LINE : TX-4
SP 340 TO SP 500

NORTHEAST

ACQUISITION PARAMETERS

CONTRACTOR	WV GECO RHD
VESSEL	WV GECO RHD
AIRBOYS	15 M
SHOT INTERVAL	25 M
GUN DEPTH	10 M
GUN ARRAY WIDTH	76 M
GUN PRESSURE	6276 G/CM ²
FIELD RECORDER	DSS V/DPS/V/NOIS/100
RECORDING FOLD	60 FOLD / 120 TRACES
FILES	L.C.: 3.5/18 1HZ/DB/OCT1 H.C.: 128/22
FORMAT	SEG-D 1600 BPT
SAMPLE RATE	5100 US
RECORD LENGTH	5000 M
CABLE LENGTH	10 M
NUMBER OF GROUPS	120
GROUP INTERVAL	25 M

TEST PROCESSING PARAMETERS

PROCESSING SAMPLE INTERVAL	4 MS
PROCESSING RECORD LENGTH	5000 MS
[REFORMAT]	
SEG-D 8048 TO WGC CODE 4 FORMAT	
[BEAMSTEER]	
DIFFERENTIAL NOISE APPLIED	
WEIGHTING FUNCTION	
SEE TOP HEADER	
OUTPUT 120 TRACES	
[PREPROCESSOR - D.B.S.]	
A) GEOMETRIC SPREADING GAIN APPLIED	
B) DECONVOLUTION	MINIMUM PHASE INVERSE FILTER
TYPE	2 X 2000 MS
WINDOW LENGTH	4 MS
MIN. PREDICTIVE DISTANCE	200 MS
MAX. PREDICTIVE DISTANCE	200 MS
HOT CORRELATIONS	SPATIALLY AVERAGED OVER 30
TRACES IN EACH SHOT GATHER	
C) COMMON DEPTH FAMILY GATHER	
D) TRACE BALANCE ON OUTPUT	
[DIP MOVEOUT CORRECTION]	
[6000% N.M.D. STACK]	
[TIME VARIANT FILTER]	
TIME (SECS)	L.C. 1HZ/DB/OCT1 H.C.
0.000	10 / 24 55 / 48
1.000	8 / 24 30 / 48
[SCALING]	
ROBUST AGC 500 MS WINDOW	

DISPLAY PARAMETERS

TEST DISPLAYED NORMAL SEG POLARITY	
HORIZONTAL SCALE	1:24000
VERTICAL SCALE	1:50 DB / IN
S.P.'S DISPLAYED AT CDP LOCATIONS	

COMMENTS

NO GUN AND CABLE CORRECTION HAS BEEN APPLIED
COMPRESSION PSES RECORDS AS NEGATIVE NUMBERS
ON TAPE AND PLOT AS TROUGHS (WHITE) ON PLAYBACK

W.C.C. INPUT BAIASST: 05/08/81
W.C.C. VELOCITY: M400041
W.C.C. JOBNAM: M02C0A04