

SP 238.5

TIME	VRMS	INTV
0	1500	1550
350	1550	1890
600	1700	2372
900	1950	2346
1400	2100	4210
1700	2500	3917
2300	3000	5941
2900	3800	5941
5000	5500	7217

SP 313

TIME	VRMS	INTV
0	1500	1550
350	1550	1890
500	1700	2007
800	1950	2307
1300	2100	2320
1650	2600	3936
2100	3000	4149
2700	3800	5786
5000	5500	6986

SP 353

TIME	VRMS	INTV
0	1500	1550
350	1550	1890
400	1700	2510
800	1950	2171
1350	2100	2301
1630	2600	4253
2050	3000	4206
2700	3800	5621
5000	5500	6986

SP 387.5

TIME	VRMS	INTV
0	1500	1550
350	1550	1890
600	1700	1890
800	1950	2557
1280	2100	2329
1650	2600	3859
1950	3000	4617
2500	3800	5808
5000	5500	6787

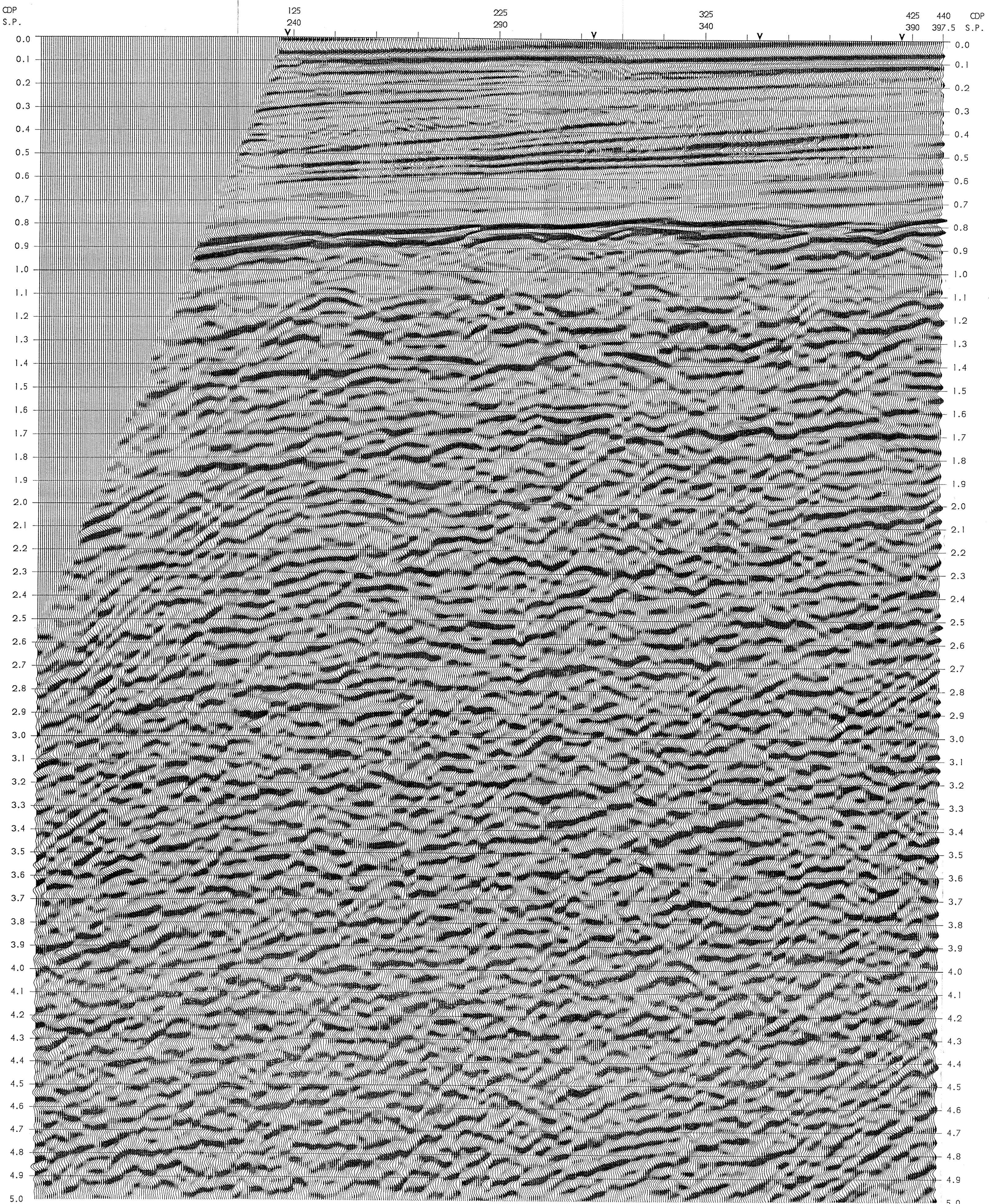
SECTION 17  
E. GEORGETOWN, TEXAS  
17 AUG. 1989  
Prot. N. 6151


LINE TX-9  
SPS 240-400

N.E.  
DIRECTION OF SHOOTING

BEAM STEERING/STK/TVFL

TEXACO PETROLEUM  
PENN GEOPH. CONSULTANTS  
SICILY 1985 PERMIT CR-119-TX





GeoCenter  
Houston, Texas

DATE PROCESSED JUL 1988

REEL NUMBER \_\_\_\_\_

CONTRACT NUMBER 6461

**FIELD RECORDING**

RECORDED BY GECO M/V GECO RHO

DATE NOVEMBER 1985 SYSTEM DSSV/DSF/NORD

FORMAT SEGD 8048 GAIN IFP

**ENERGY SOURCE**

TYPE AIRGUNS 6276 CU IN 2000 PSI

ARRAY \_\_\_\_\_ DEPTH 10M

**STREAMER**

LENGTH 3000M NO. TRACES 120

DEPTH 10M GROUP INTERVAL 25M

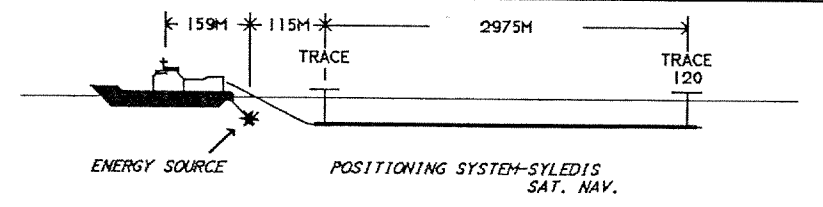
ARRAY INLINE GEOPH/TR OVER 25M

**PARAMETERS**

RECORDING FOLD 60 S.P. SPACING 25M

SAMPLE INTERVAL 2MS RECORD LENGTH 5SECONDS

RECORDING FILTER LO-3.5HZ HI-128HZ



ENERGY SOURCE POSITIONING SYSTEM-SYLEDIS SAT. NAV.

**DIGITAL PROCESSING**

SEQ	PROCESS	PARAMETERS
1	REFORMAT	SEGD-SEGY O/P 5SEC @ 4MS
2	SCALE	500MS AGC WINDOW
3	CDP SORT	6000K
4	DECONVOLUTION	SEE BELOW
5	VELOCITY ANALYSIS	1 PER 3 RM
6	RSIM	BEAM STEERING 5 TRACES 1-3-S-3-1
7	NMO MUTE	NORMAL MOVEOUT AND MUTE APPLICATION
8	CDP STACK	6000K STACK
9	STATIC	+13 MS GUNB. CABLE DEPTH CORRECTION
10	FILTER	SEE BELOW
11	PSSM	3X1 TRACE SUM
12	SCALING	500 MSEC AGC

DECON	* OPERATOR LENGTH	PREDICTIVE GAP	DERIVATION WINDOWS	APPLICATION WINDOWS	ADDITIONAL PARAMETERS
5	240	36	100 300TRACE LENG	TH	

FILTER	CUT OFF POINT	6 DB POINT	6 DB POINT	CUT OFF POINT	APPLICATION TIMES FOR SHOTPOINTS SPECIFIED	APPLICATION TIMES
9	10	15	50	55	0-800	
	2	4	20	25	1300-5000	

ALL TIMES IN MILLISECONDS ALL FREQUENCIES IN HERTZ  
FILTERS INTERPOLATED LINEARLY BETWEEN APPLICATION TIMES  
APPLICATION TIMES INTERPOLATED LINEARLY BETWEEN SHOTPOINTS  
\*OPERATOR LENGTH GIVEN IS ACTIVE LENGTH ADD GAP FOR TOTAL LENGTH

SAMPLE RATE: 4MS; DATUM CORRECTION: +13MS

SCALES: HORIZONTAL 10TR/CM VERTICAL 10CN/SEC.

RECORDING POLARITY: PRESSURE INCREASE IS -VE NUMBER

PROCESSING POLARITY: POSITIVE NO. GIVES BLACK PEAK