

SP 338.5

TIME	VRMS	INTV
0	1500	1550
350	1550	1890
600	1700	2487
830	1950	2285
1450	2100	3786
1900	2600	4296
2350	3000	6546
2800	3800	7097
5000	5500	

SP 432.5

TIME	VRMS	INTV
0	1500	1550
350	1550	2212
800	1950	2320
1300	2100	4118
1600	2600	4118
2050	3000	5892
2600	3800	6883
5000	5500	

SP 487.5

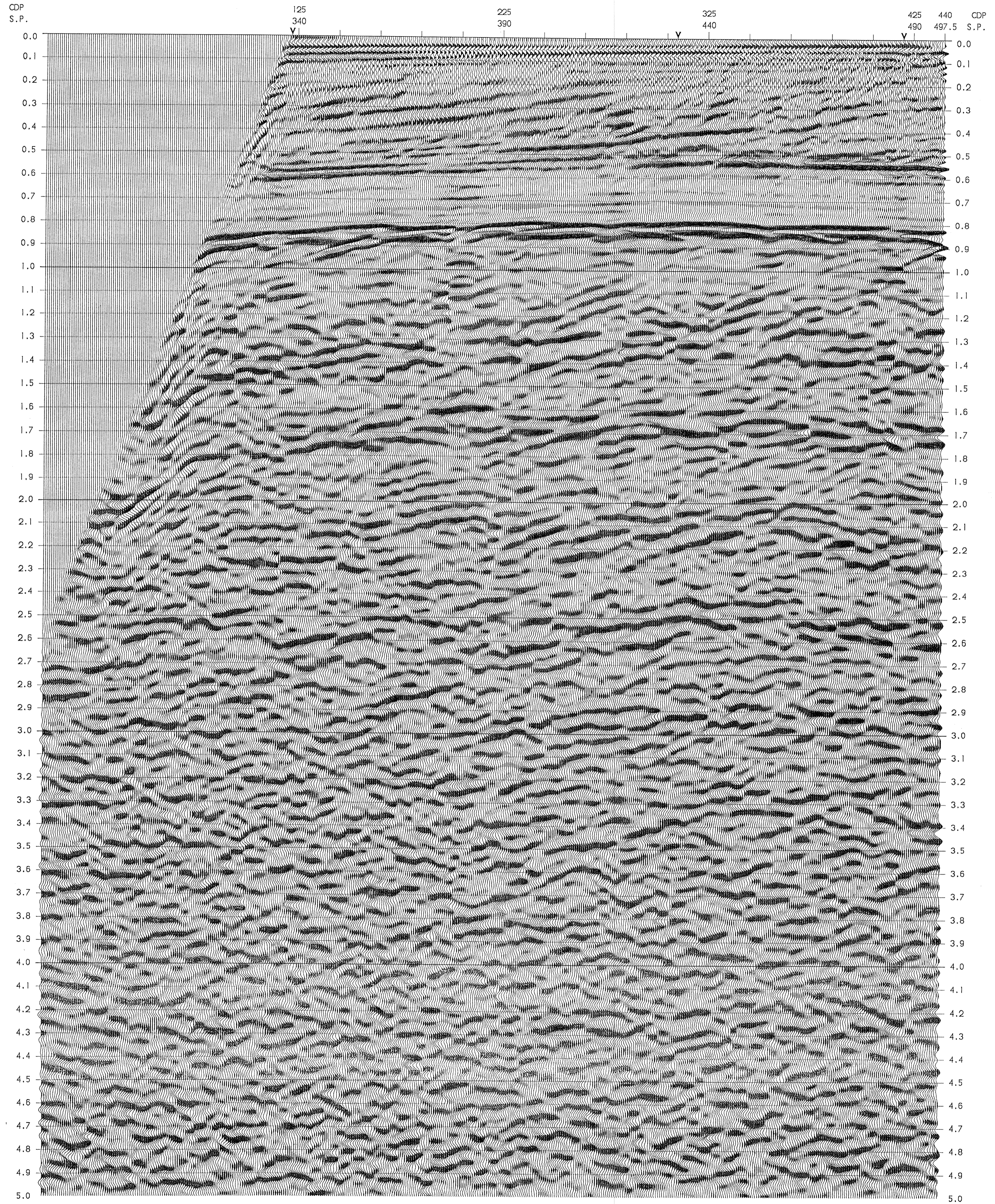
TIME	VRMS	INTV
0	1500	1550
350	1550	1935
550	1700	2410
800	1950	2320
1300	2100	3794
1700	2600	4658
2000	3000	6017
2500	3800	6787
5000	5500	


SEZIONE IDROCARBURI
E GEOTERMICI DI NAPOLI
17 LUG. 1983
Prot. N. 1151

LINE TX-4
SPS 340-500
NORTH
DIRECTION OF SHOOTING

DMO/DCN/STACK/TVFL

TEXACO PETROLEUM
PENN GEOPH. CONSULTANTS
SICILY 1985 PERMIT CR-119-TX





GeoCenter
Houston, Texas

DATE PROCESSED JUL 1988
REEL NUMBER _____
CONTRACT NUMBER 6461

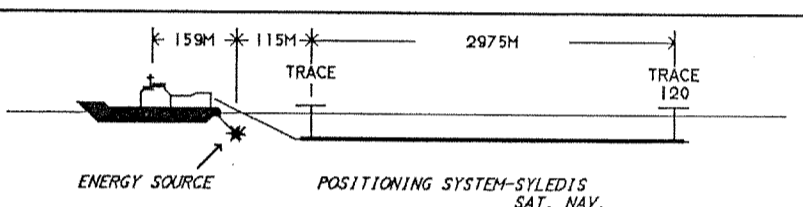
FIELD RECORDING

RECORDED BY GECO M/V GECO RHO
DATE NOVEMBER 1985 SYSTEM DSSV/DSF/NORD
FORMAT SEGD 8048 GAIN 1FP

ENERGY SOURCE
TYPE AIRGUNS 6276 CU IN 2000 PSI
ARRAY _____ DEPTH 10M

STREAMER
LENGTH 3000M NO. TRACES 120
DEPTH 10M GROUP INTERVAL 25M
ARRAY IN LINE GEOPH/TR OVER 25M

PARAMETERS
RECORDING FOLD 60 S.P. SPACING 25M
SAMPLE INTERVAL 2MS RECORD LENGTH 5SECONDS
RECORDING FILTER LO-3.5HZ HI-128HZ



ENERGY SOURCE POSITIONING SYSTEM-SYLEDIS SAT. NAV.

DIGITAL PROCESSING

SEQ	PROCESS	PARAMETERS
1	REFORMAT	SEGD-SEGY O/P 5SEC @ 4MS
2	SCALE	500MS AGC WINDOW
3	CDP SORT	600MS
4	DMO	DIP MOVEOUT
5	DECONVOLUTION	SEE BELOW
6	VELOCITY ANALYSIS	1 PER 3 KM
7	NMO MUTE	NORMAL MOVEOUT AND MUTE APPLICATION
8	CDP STACK	600MS STACK
9	STATIC	+13 MS GUNB. CABLE DEPTH CORRECTION
10	FILTER	SEE BELOW
11	PSSM	3X1 TRACE SUM
12	SCALING	500 MSEC AGC

DECON	* OPERATOR LENGTH	PREDICTIVE GAP	DERIVATION WINDOWS	APPLICATION WINDOWS	ADDITIONAL PARAMETERS
5	240	36	100 3000TRACE LENG	7H	

FILTER	CUT OFF POINT	6 DB POINT	6 DB POINT	CUT OFF POINT	APPLICATION TIMES FOR SHOTPOINTS SPECIFIED	APPLICATION TIMES
9	10	15	50	55	0-800	
	2	4	20	25	1300-5000	

ALL TIMES IN HILLISECONDS ALL FREQUENCIES IN HERTZ
FILTERS INTERPOLATED LINEARLY BETWEEN APPLICATION TIMES
APPLICATION TIMES INTERPOLATED LINEARLY BETWEEN SHOTPOINTS
*OPERATOR LENGTH GIVEN IS ACTIVE LENGTH ADD GAP FOR TOTAL LENGTH

SAMPLE RATE: 4MS; DATUM CORRECTION: +13MS
SCALES: HORIZONTAL 10TR/CM VERTICAL 10CM/SEC.
RECORDING POLARITY: PRESSURE INCREASE IS -VE NUMBER
PROCESSING POLARITY: POSITIVE NO. GIVES BLACK PEAK