

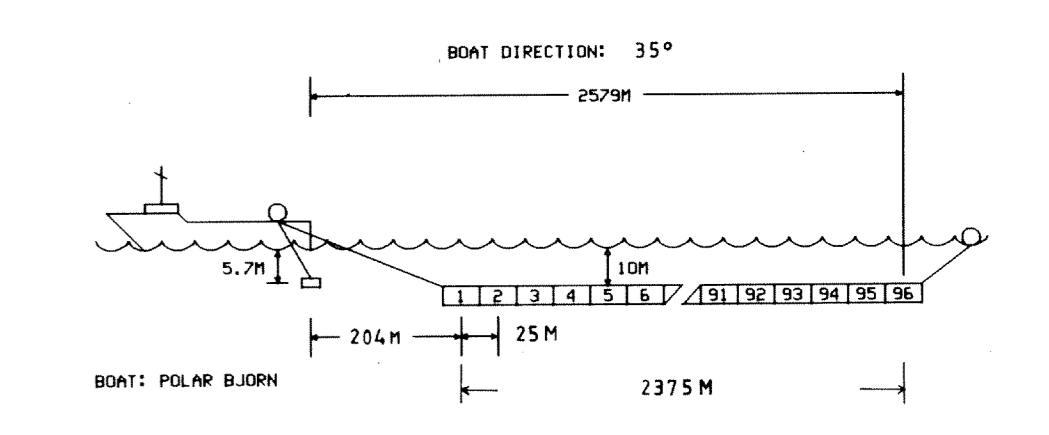
SEZ MONTEDISON
 - 8 AUG. 1985
 637 J
 CR 114
 LINE C-81-56
 SW 451 SHOT POINTS 880 SE

FILTERED 4800 0/0 STACK

PARTY : 127-M6-30 PL: 13
 REPROCESSING: 127-11-78 DATE: MAY-30-85

FIELD RECORDING (CGG)

** BOAT ** POLAR BJORN ** SOURCE ** UNPORCHOC
 NAVIGATION SYSTEM SYLEDIS DEPTH 5.7 M
 RECORDING DATE JUNE 23 -81 CAPACITY 3 SUBARRAYS (4 GUNSKX)
 SP INTERVAL 25 M
 ** INSTRUMENT ** SN 338 ** STREAMER ** 2400 M
 FORMAT 9 TRACKS 1600 BP1 DEPTH 10 M
 FILTER B-125HZ NUMBER OF CHANNELS 96
 SAMPLING INTERVAL 2 MS GROUP INTERVAL 25 M
 RECORDING LENGTH 6 S OFFSET 204 M



DIGITAL PROCESSING RATE 4 MS

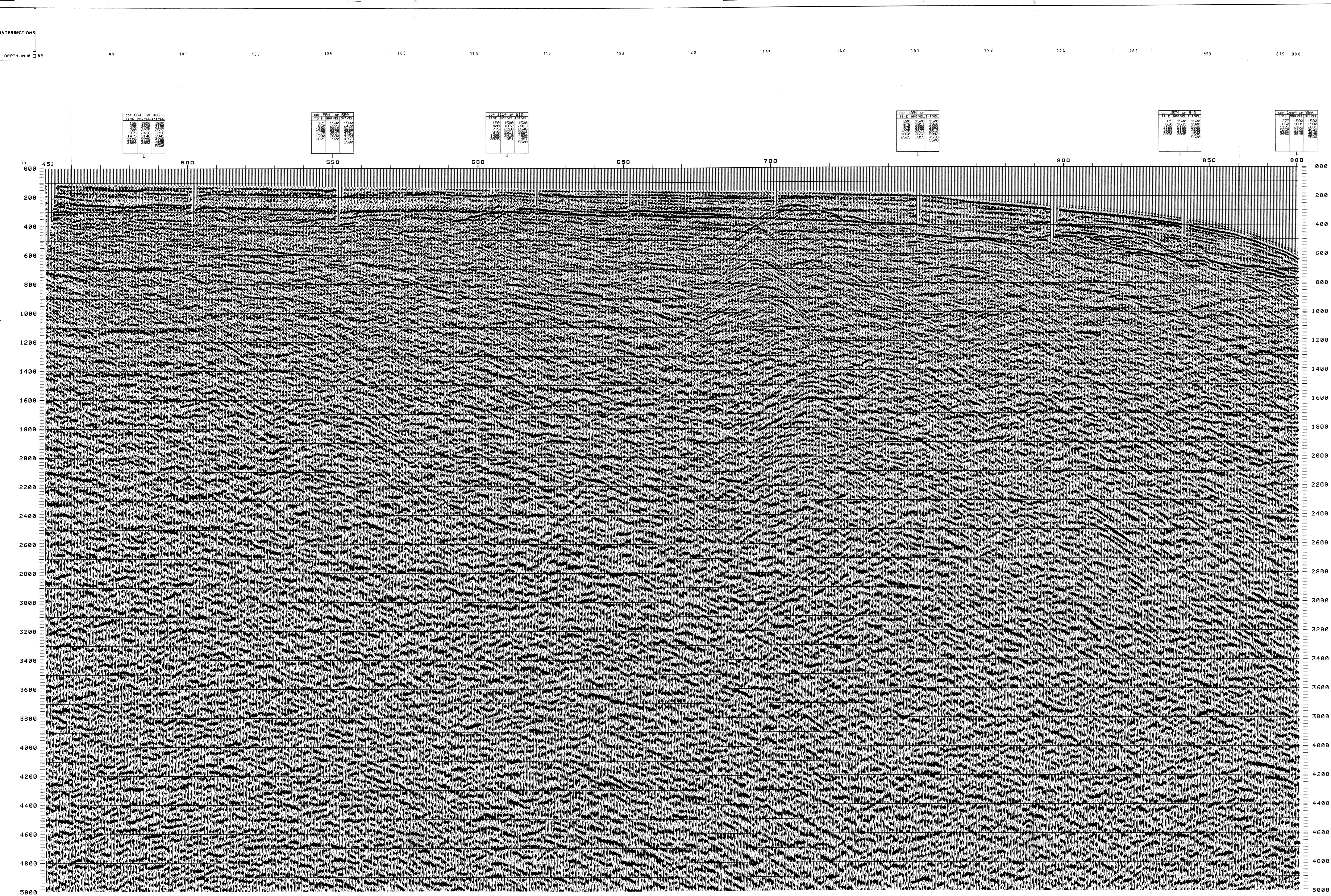
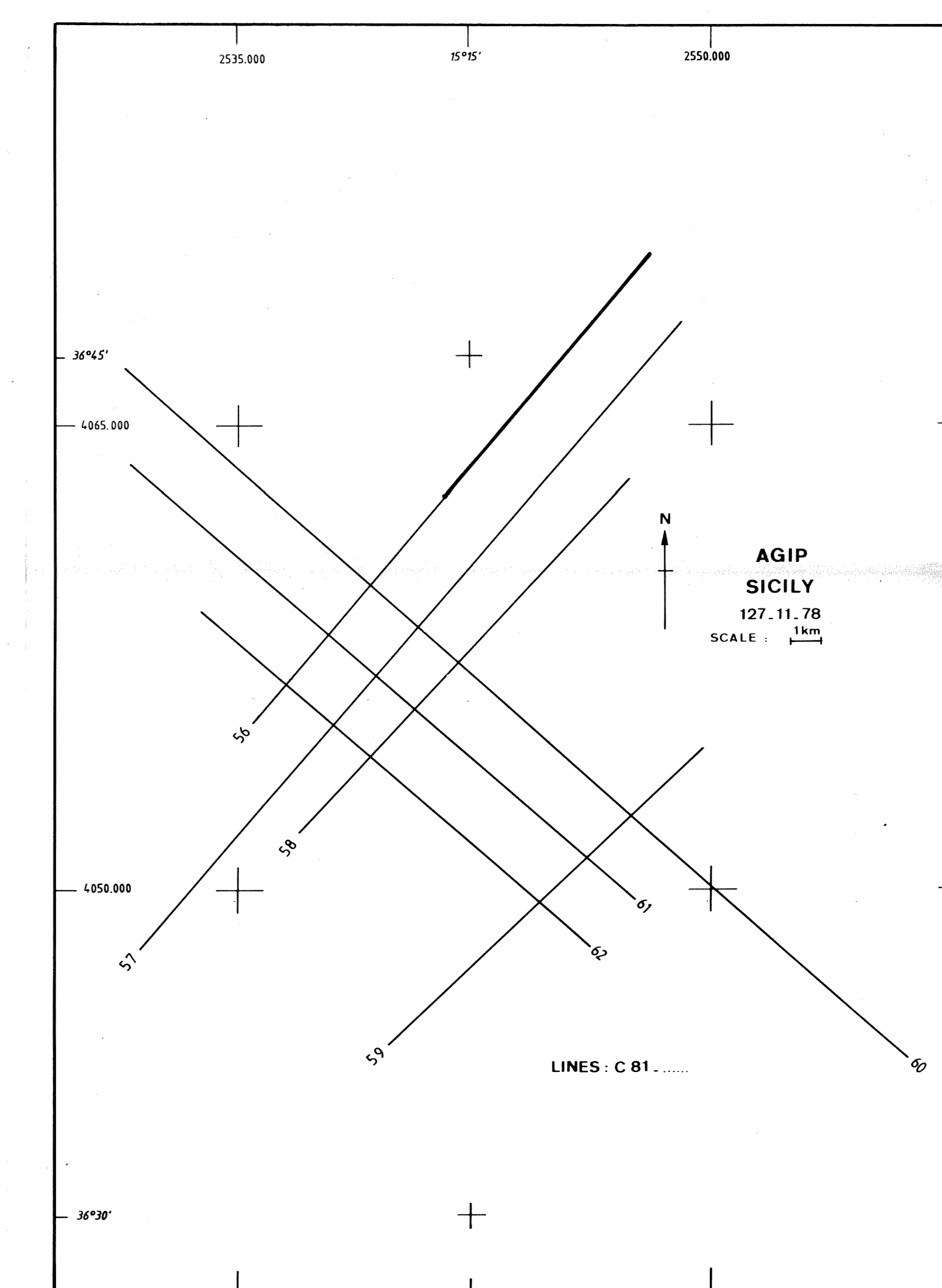
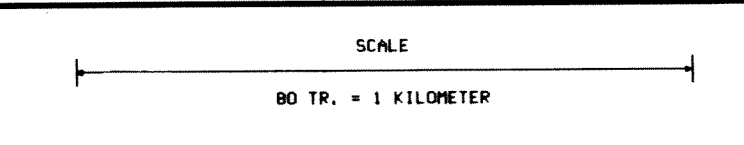
DEMULTIPLICING	PREDICTIVE DECONVOLUTION
AMPLITUDE RECOVERY	GAP 16 MS - OPERATOR LENGTH 200 MS
ANTI-NOISE FK FILTERING	WINDOWS 200-2000 MS
1000-4000 M/S	WINDOWS 2000-4000 MS
WAPCO (STABILIZATION OF UPC SIGNAL)	TIME VARIANT FILTER
NOTES	8 / 60 HZ 0-1000 MS
BAND PASS FILTER 8-80 HZ	8 / 40 HZ 1800-2000 MS
SPIKE DECONVOLUTION	8 / 30 HZ 3000-5000 MS
OPERATOR LENGTH 240 MS	TRACE EQUALIZATION
WINDOWS 250-2000 MS	L 300 MS 200-1800 MS
2000-4000 MS	L 800 MS 1800-5000 MS
VELOCITY ANALYSIS	ANALOG DISPLAY (REVERSED POLARITY)
W/O CORRECTIONS	SP NUMBER ON SECTION = CDP TRACE 1
STACK 4800 0/0	
STATIC CORRECTION + 10 MS	

POLARITY

HYDROPHONE COMPRESSION = NEGATIVE NUMBER ON TAPE
 AFTER PROCESSING = WHITE ON DISPLAY

TIME ORIGIN

MEAN SEA LEVEL



INTERSECTIONS

DEPTH IN M 89 97 101 103 108 108 114 117 123 128 133 140 151 192 224 262 850 875 880

TIME	FILE	DATE

TIME	FILE	DATE

TIME	FILE	DATE

TIME	FILE	DATE

TIME	FILE	DATE

TIME	FILE	DATE