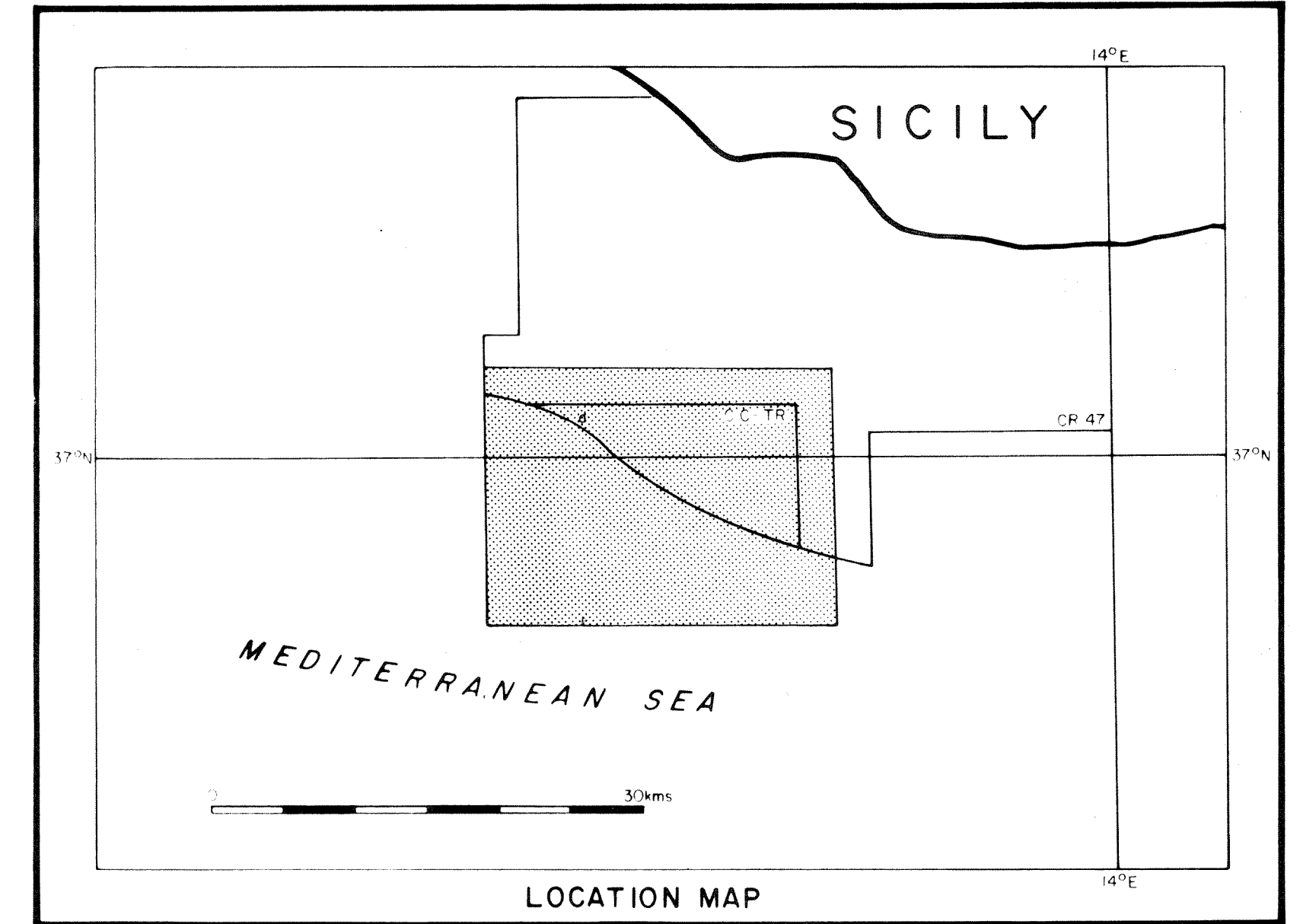
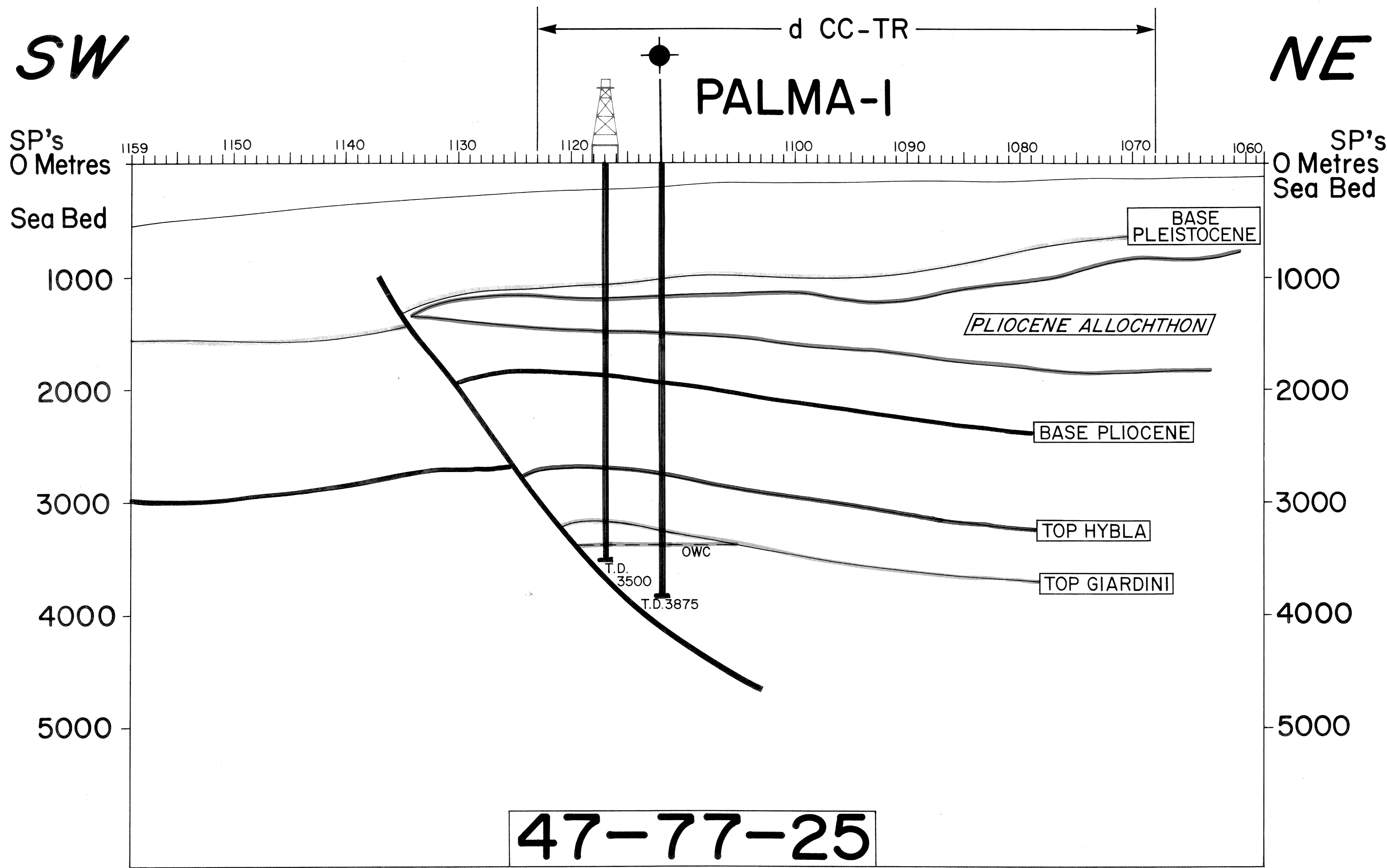


HORIZONTAL SCALE 1:25,000



VERTICAL EXAGGERATION 2:1

PALMA-4 PROPOSED LOCATION



Tricentrol

OFFSHORE SICILY

**EXAMPLE GEOSEISMIC LINE
47-77-25
THROUGH THE PALMA-1
LOCATION**

d CC-TR

AUTHOR	SRT	CONTOUR INT.	—	DATE	JULY '85
DRAUGHTED	GGH	TYPE	02-V	ENCLOSURE No.	3
APPROVED		SCALE	25,000	FILE No.	2178

SEZ/INF IDROCARBURI

VAPOLI

10 LUG. 1985

L. S. 28

P. 47