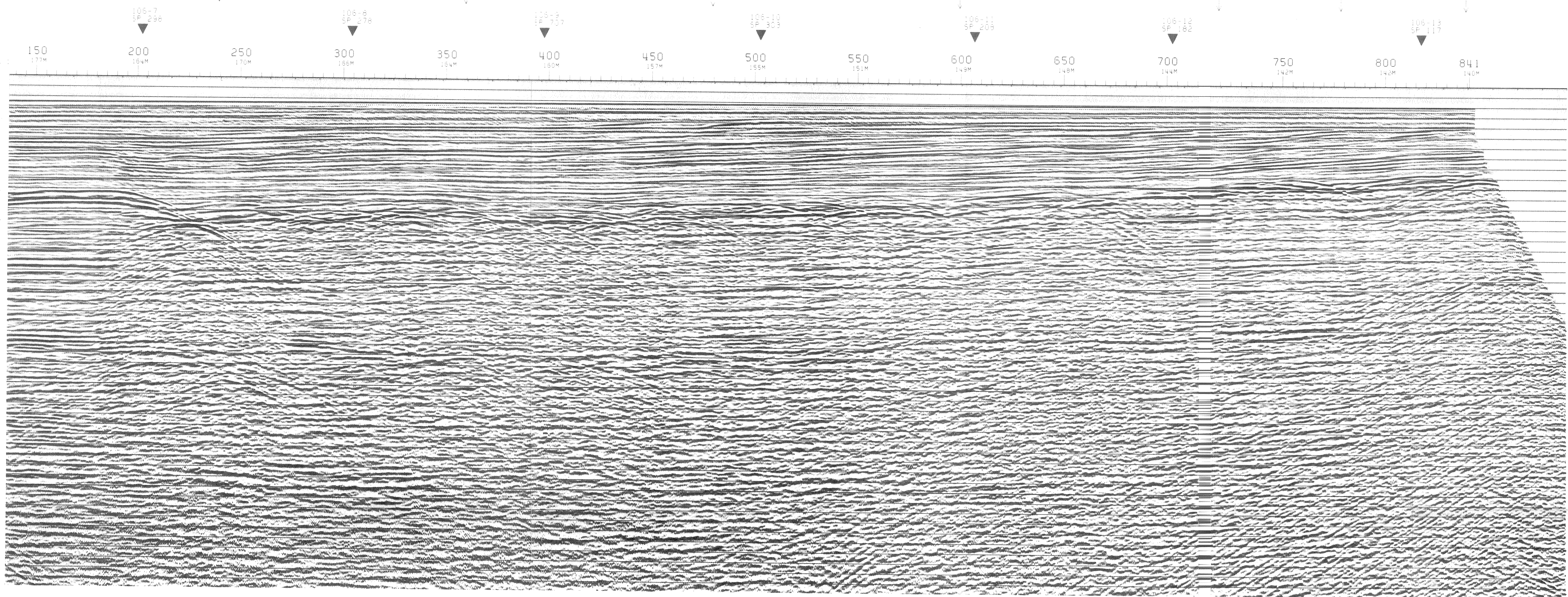
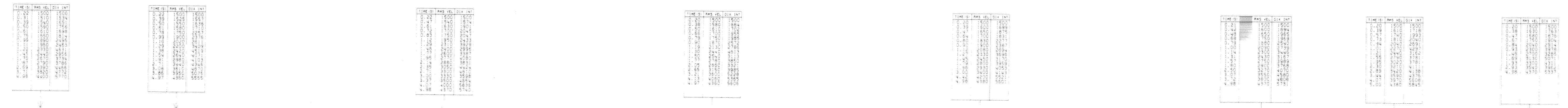




W.D.

LINE CR-106-3  
S.P. 140 TO 841



<b>PETREX S.P.A.</b>	
RICERCA GEOFISICA	
AREA ITALIA SICILY CR-106-1A	CONTRACT NO. 140 DATE OF RECORDING: OCTOBER, 1983 DATE OF PROCESSING: NOV. 1983
<b>RECORDING DATA</b>	<b>PROCESSING SEQUENCE</b>
AREA BRAND: PART 13 PRIMARY NAVIGATOR SYSTEM: SEIBER SECONDARY NAVIGATOR SYSTEM: CIP APP. SECTION: SECTION	PROCESSING SAMPLE RATE: 4 MS [MULTIPLY]
<b>SOURCE</b> ALMOUNT: 200 CUM DEPTH: 30 CUM VELOCITY: 500 SPTS PER 1/4: 10 SP. INTERVAL: 50	[MULTIPLY] [MULTIPLY] [MULTIPLY] [MULTIPLY] [MULTIPLY]
<b>INSTRUMENTS</b> AMP. TYPE: 45-500 REC. FILTERS: 12 HZ-100 HZ REC. LENGTH: 100 M RECORD RATE: 2 MS SAMPLE RATE: 2 MS	[MULTIPLY] [MULTIPLY] [MULTIPLY] [MULTIPLY] [MULTIPLY]
<b>CABLE</b> STRONG: 4500 M LENGTH: 4500 M CABLE DEPTH: 12 M	[MULTIPLY] [MULTIPLY] [MULTIPLY] [MULTIPLY] [MULTIPLY]
[MULTIPLY] [MULTIPLY] [MULTIPLY] [MULTIPLY]	[MULTIPLY] [MULTIPLY] [MULTIPLY] [MULTIPLY]
<b>LEGEND</b> INTERSECTIONS: [Symbol] UNDER: [Symbol] W.D.: [Symbol]	
<b>COMMENTS</b> DATUM PLANE IS SEA LEVEL. [Symbol] CUM AND CUM DEPTH CORRECTION OF 12 MS HAS BEEN APPLIED. [Symbol] COMPRESSION PULSES WITH NEGATIVE NUMBERS ON TRACE AND POSITIVE NUMBERS ON TIME AND PLOT AS INDICATED IN WHITE.	

SEZIONE IDROCARBURI  
DI NAPOLI  
- 7 OTT. 1983  
Proj. N. 5686  
Geol. [Signature]  
[Signature]