

CANADA NORTHWEST (CNW) ITALIANA SPA

WESTERN RICERCHE GEOFISICHE MILAN - ITALY

AREA OFFSHORE SICILY
PERMIT CR.103.CN

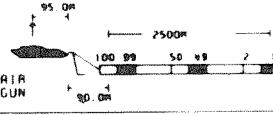
RECORDING DATA

BOAT
SHOT BY: SEISMIC PROFILERS
VESSEL: RIGOR
PRIMARY NAVIGATION SYSTEM: TRIPPODRO
SECONDARY NAVIGATION SYSTEM: SATNAV
SHIP/SECTION LOCATION: SOURCE POSITION

SOURCE
WIDE AIRGUN
SHOT DEPTH: 7.50
PUSP PER AIRGUN: 50
SP INTERVAL: 250

INSTRUMENTS
NAME/MODEL: 1.1 SP-1
REC. FILTERS HZ: 10 1/3 1/3 1/3 1/3
REC. FILTERS HZ: HI 1200/172 00/0/1
RECORD LENGTH: 6 SECS
FREQUENCY: 16.6 BY 1600 SP
SAMPLE RATE: 2 MS

CABLE
STRAINS: 2500 #
GROUPS: 100
GROUP INTERVAL: 25 #



SCALES
HORIZONTAL: 1:1000
VERTICAL: 20 CMS/SEC

LEGEND
INTERSECTIONS
M. D.
D. C. FOR M. C. C.

PROCESSING SEQUENCE

PROCESSING SAMPLE RATE 2 MS
DEMULTIPLY

SIGNATURE EXTRACTION
FROM DEEP WATER BOTTOM REFLECTION
INSTA. & HYDROPH. CORRECTION
DESIGNED OUTPUT: SPIKE

DECONVOLUTION BEFORE STACK
GEOMETRIC SPREADING APPLIED
DECONV. TYPE: 010 PHASE INVERSE FILTER
WIDENING LENGTH: 2.5 2000 MS
OPERATION LENGTH: 200 MS
WIDENING DISTANCE: 2 MS
PERCENT WHITE LIGHT: 100
THREE BALANCE ON OFF

VELOCITY ANALYSIS
LATER VELOCITY
5000% N.M.D. STACK
ROUTE APPLIED
DYNAMIC CORRECTION

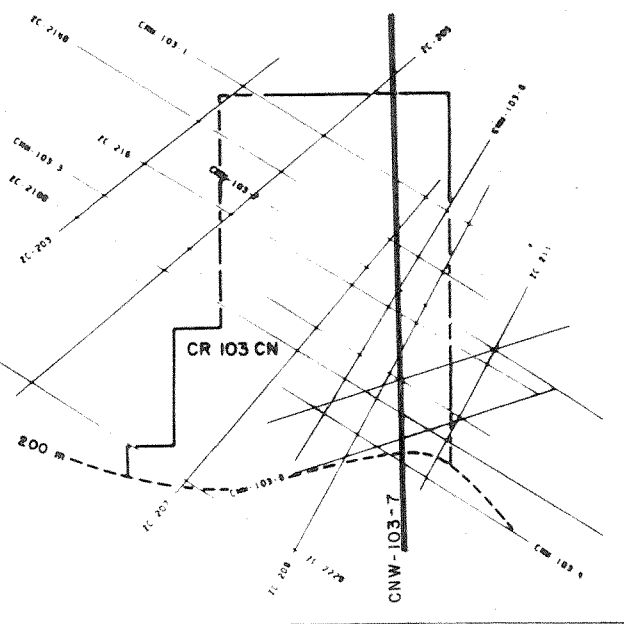
TIME VARIANT FILTER
FILTERS ARE INTERPOLATED BOTH SPATIALLY AND TEMPORALLY

MIGRATION
FILTERS ARE INTERPOLATED BOTH SPATIALLY AND TEMPORALLY

TIME VARIANT FILTER
FILTERS ARE INTERPOLATED BOTH SPATIALLY AND TEMPORALLY

COMMENTS
DATA PLANE IS SEA LEVEL
A GAIN AND CABLE DEPTH CORRECTION OF 13 MS HAS BEEN APPLIED
COMPRESSION PULSES SHOWN BY NEGATIVE NUMBERS ON TRACE AND PLOT AS THINNING WHITE

LINE LOCATION MAP



CNW-103-7

5000 % D.B.S.-R.A.P.-F-K MIGR.

VENERE 1 PROPOSED LOCATION

