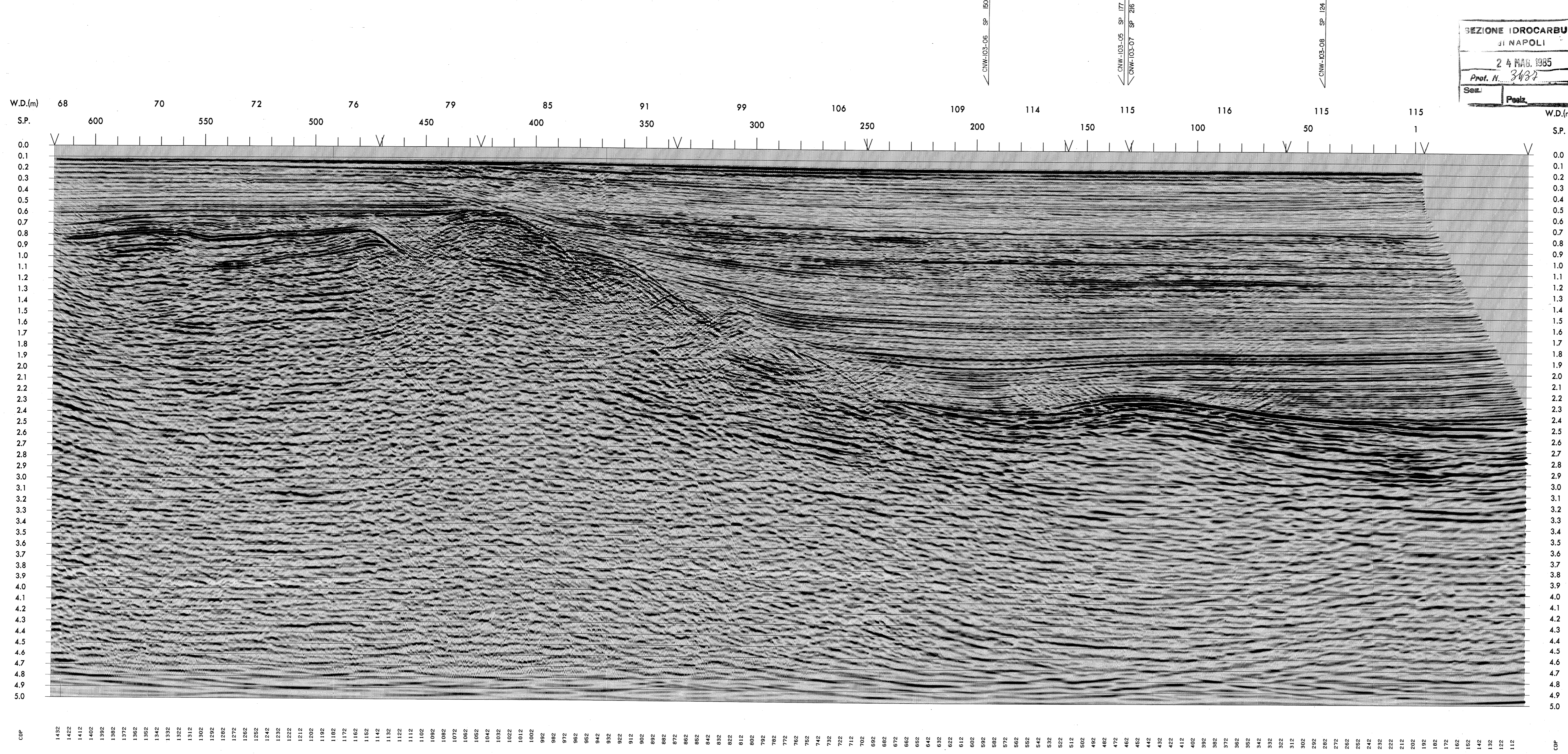


MIGRATION VELOCITIES			MIGRATION VELOCITIES			MIGRATION VELOCITIES			MIGRATION VELOCITIES			MIGRATION VELOCITIES			MIGRATION VELOCITIES			MIGRATION VELOCITIES						
AT CDP	V-RMS	V-INT	AT CDP	V-RMS	V-INT	AT CDP	V-RMS	V-INT	AT CDP	V-RMS	V-INT	AT CDP	V-RMS	V-INT	AT CDP	V-RMS	V-INT	AT CDP	V-RMS	V-INT				
ms	m/s	m/s	ms	m/s	m/s	ms	m/s	m/s	ms	m/s	m/s	ms	m/s	m/s	ms	m/s	m/s	ms	m/s	m/s				
1440	130	1480	1145	130	1480	875	173	1480	702	200	1480	520	200	1480	322	200	1480	197	200	1480	103	200	1480	
1480	590	1735	1801	590	1735	1801	890	1743	1801	1000	1741	1800	1020	1742	1800	1026	1742	1800	1040	1743	1800	1050	1744	1801
1801	820	1877	2200	750	1844	2200	1200	1872	2201	1820	1961	2200	1880	1965	2200	1863	1961	2200	1820	1952	2200	1770	1942	2199
2200	1080	2044	2499	1020	2038	2499	1520	2020	2498	2310	2087	2500	2280	2069	2501	2220	2057	2499	2390	2096	2501	2350	2120	2300
2499	2990	3801	4501	2980	3839	4500	3470	3629	4501	3710	3218	4501	3670	3214	4500	3678	3253	4500	3700	3163	4499	3820	3153	4501
4501	5000	4323	5000	5000	4346	5001	5000	4098	5001	5000	3759	4999	5000	3773	5001	5000	3794	5000	5000	3729	5001	5000	3674	5001



CANADA NORTHWEST (CNW)
 ITALIANA SPA

line: CNW-103-03 sp: 1-620
 area: OFFSHORE SICILY
 title: PERMIT CR.103.CN
 5000% MIGRATED STACK
 direction: (WNW)

SEZIONE IDROCARBURI
 JI NAPOLI
 24 MAR. 1985
 Prof. N. 3487
 Sez. Pozz.

ACQUISITION:

SHOT BY: SEISMIC PROFILERS S.V. NINA PROFILERS (APR 1983)

ENERGY SOURCE:

Type	wide array
90° interval	25m
shot point interval	25m
source depth	7.5m
source volume	3640 cuins

RECEIVING ARRANGEMENT:

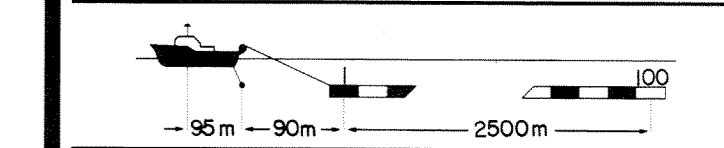
field of recording	50
no. of groups	100
cable length	2500m
near trace	1
interval	25m
depth	8.0m
offset	90m

INSTRUMENTATION:

recording system	DPS V
gun type	1F3
filters: low cut	3.5 Hz
high cut	128 Hz
record format	segB, 1600 bpi, 100 channels
sample rate	6s
record length	2ms

POSITIONING SYSTEM:

primary: TRISPONDER	secondary: SATNAV
---------------------	-------------------



PROCESSED BY: MERLIN GEOPHYSICAL CO. LTD., WOKING, ENGLAND (1983, CONTRACT 401)

- DEMULITPLEX
- 2MS TO 4MS SUBSAMPLE: 90(36)Hz (dB/oct)
- STATIC CORRECTIONS: source and receiver depth +13ms
- DECONVOLUTION BEFORE STACK:

pre-deconvolution amplitude scaling	12dB/s exp to 3.0s
type	minimum phase least squares inverse
zone 1	zone 1
autocorrelation window length	1450ms 2200ms
max. prediction lag	240ms 240ms
min. prediction lag	12ms 12ms
post-deconvolution inverse scaling	-12dB/s exp. to 3.0s
- NMO CORRECTION: velocity derivation contoured semblance spectra
- STACK:

type	standard mean amplitude CDP
coverage	5000Z
space variant geometrical divergence compensation	
- DECONVOLUTION AFTER STACK:

type	minimum phase least squares inverse
zone 1	zone 1
autocorrelation window length	1800ms 2000ms
max. prediction lag	240ms 240ms
min. prediction lag	60ms 60ms
- WAVE EQUATION MIGRATION:

finite difference solution	48ms depth step
pre-migration filter	8(24)-80(36)Hz(dB/oct)
migration velocity derivation	interval velocity model
- SPACE TIME VARIANT FILTER:

sp 1	time	low cut	high cut
	(ms)	hz	(dB/oct)
filters linearly interpolated	210	10(18)	80(36)
cuts and slopes specified	2580	8(24)	60(36)
at -3dB point	3340	8(24)	30(36)
- TWO DIMENSIONAL FILTER:

number of adjacent traces	7
passband	+8 to -8ms dip per trace
percentage input feedback	70
- AMPLITUDE BALANCE:

a) general amplitude trend analysis and compensation	
b) robust AGC	

DISPLAY:

system	SCITEX laser plotter
vertical scale	10.0 cm/sec
	5.0 cm/sec
horizontal scale	1:12500 (1.0 traces/cm)
	1:25000 (2.0 traces/cm)
gain	2.5dB : 1.0dB
bias	10% : 5%
polarity	compression : negative : trough
datum plane	sea level
shotpoint location	source position