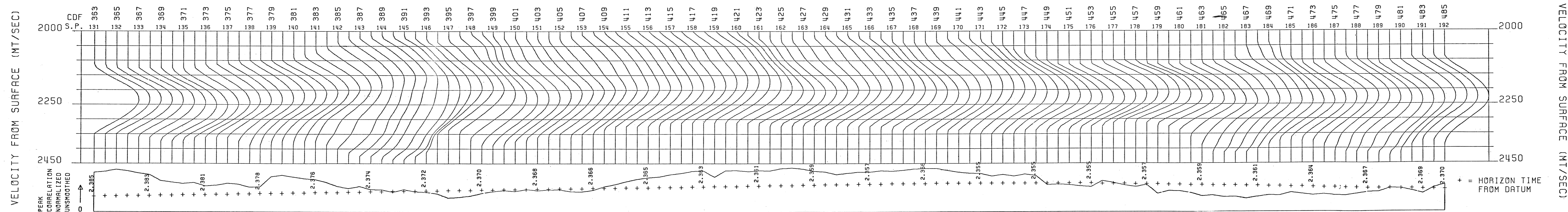




### WGC HORIZON VELOCITY ANALYSIS

LINE CNW 103-5 , HORIZON NO. 1, 10 VELOCITIES ANALYZED, VELOCITY INCREMENT = 50 MT/SEC  
 NUMBER OF TIME GATES = 3, GATE LENGTH = 40 MSEC, GATE INCREMENT = 20 MSEC, RATIO SUMMED = 1 1 1  
 VELOCITIES SMOOTHED = 3, SUMS SMOOTHED = 3, CDF'S /SUM = 1, BIAS REMOVED = 40 %



MAXIMUM CORRELATION = 0.49 E 0

SEZIONE IDROCARBURI  
 di NAPOLI  
 24 MAG. 1985  
 PROT. A 3487  
 Sez. Pezz.