

LINE: LS-86-16

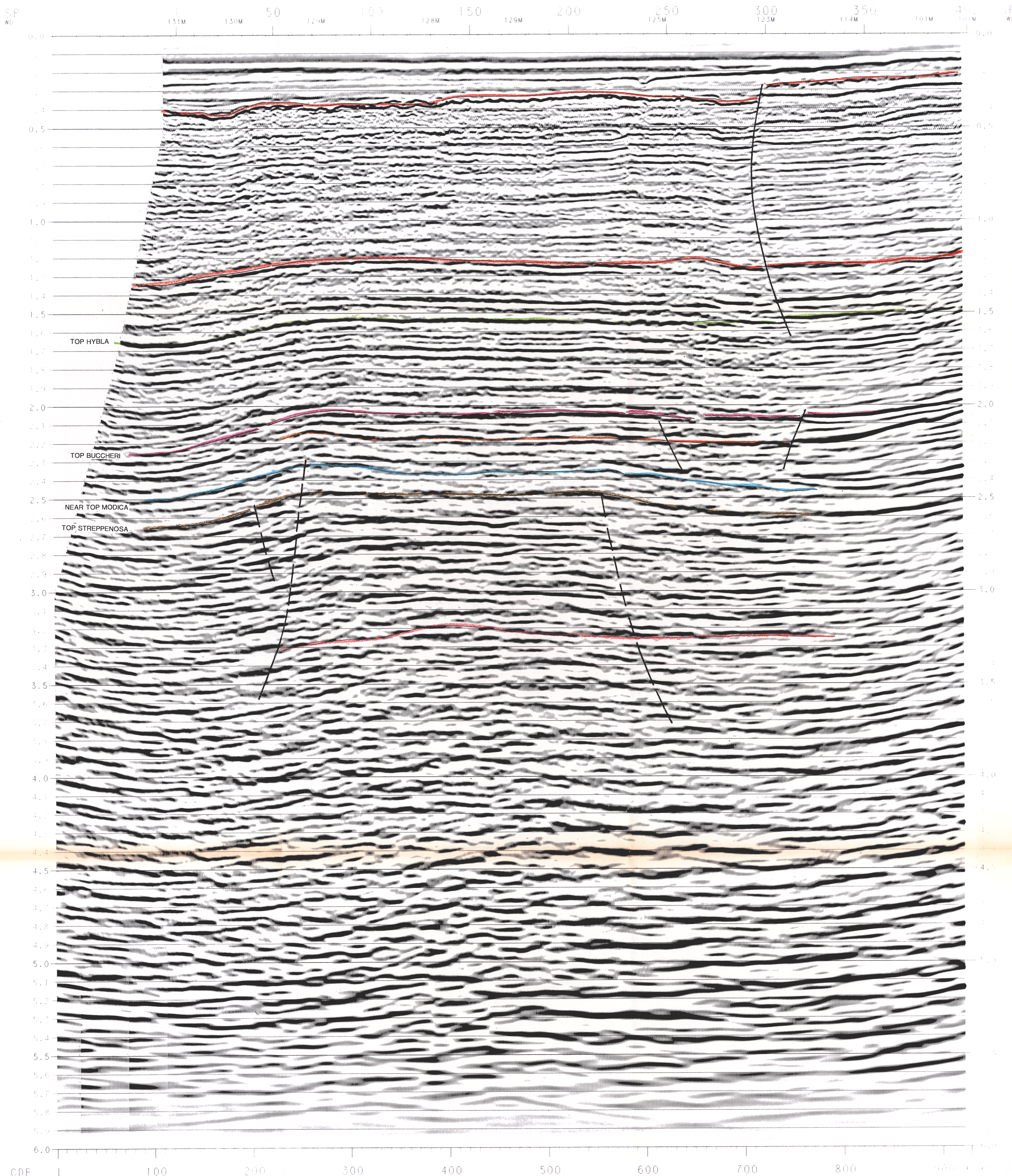
SP 1 TO SP 402

SOUTHEAST

6000% BMS, DBS, F/K, MIG, TVF

SEZIONE IDROCARBURI
 30 AGO. 1988
 Prog. 5458
 Sec. P. 2

LINE: LS-86-16
 SP 1 TO SP 402
 6000% BMS, DBS, F/K, MIG, TVF



LASMO
 INTERNATIONAL OIL DEVELOPMENT LTD

Litton WESTERN GEOPHYSICAL

AREA: OFFSHORE SICILY
 BLOCK: CR.100.HO / CR.93.AG

RECORDING DATA

PROCESSING SEQUENCE

SCALES

LINE LOCATION MAP

COMMENTS