

1470 10 22



HUDSON BAY OIL AND GAS
CO. LTD.

SICILY
MIGRATION 6000%
NORMAL POLARITY
LINE HS 81-18
(SW) | SHOTPOINTS 1080 (NE)

DATE FEBRUARY 1982
REF NO 5006019

QUALITY CONTROL

FIELD RECORDING

SHOT BY	CGG
DATE SHOT	OCT 1981
RECORDER	SN3398
FORMAT	SEG B
FILTER	8 125HZ
COVERAGE	6000%
WIN	
SOURCE TYPE	HWPOPCHOOC
SP INTERVAL	25 M
RECORD LENGTH	6 SEC
SAMPLE INTERVAL	2 MSEC
SOURCE DEPTH	5.7 M
GROUP INTERVAL	50 M
NO OF GROUPS	68
OFFSET TO TR	124 M
CABLE LENGTH	2250 M
CABLE DEPTH	12 M

DIGITAL PROCESSING

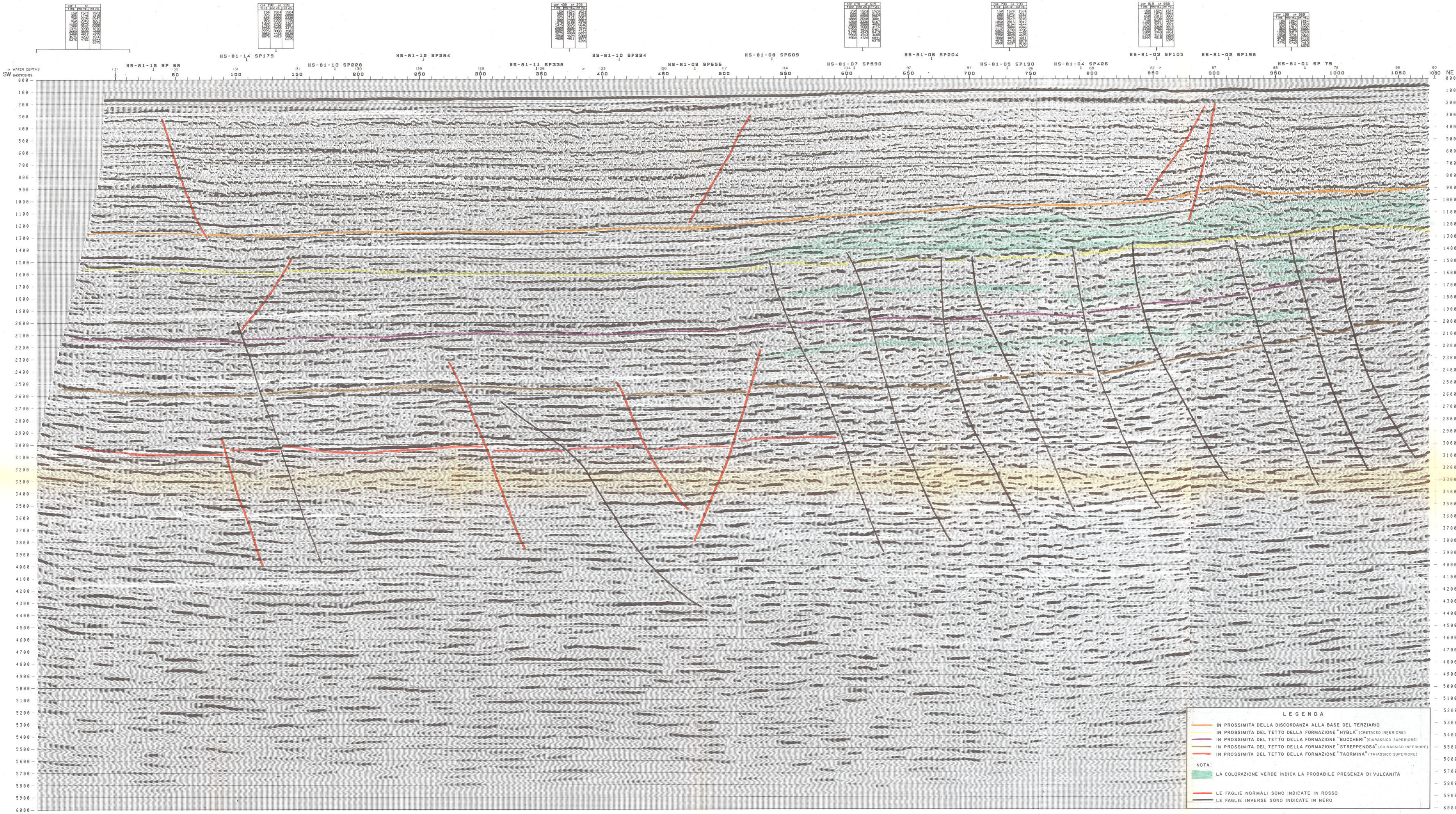
- 1 DEMULTIPLY-RESAMPLE TO 4 MS
- 2 GAIN RECOVERY
- 3 EDIT
- 4 DECONVOLUTION 2 WINDOWS= 1100-12500 12000-14500
OPERATOR LENGTH= 120 MSEC
- 5 PREDICTIVE DECONVOLUTION - TRITH 2 WINDOWS= 1100-11000 12000-14500
- 6 FINAL NMO AND NUTES
- 7 STACK - 6000%
- 8 PREDICTIVE DECONVOLUTION - TRITH 1 WINDOW= 12000-14500
- 9 FX FILTER
- 10 MIGRATION
- 11 TIME VARIANT FILTER
3 10-40 55 10-11000
3 10-20 35 12000-14000
3 10-25 32 15000-16000
- 12 DYNAMIC EQUALIZATION
- 13 FILM DISPLAY 25 4TR IN 4IN SEC 10TR CM 10CM SEC

REMARKS

- 1 SHOT POINT MARKED AT ANTENNA
- 2 VELOCITIES SHOWN ARE STACKING VELOCITIES *
* THE VELOCITIES ARE REDUCED BY 15% AT TIME 0 SEC

ALLEGATO 9

SEZIONE IDROCARBURI
SICILY
5544



LEGENDA

- IN PROSSIMITA DELLA DISCORDANZA ALLA BASE DEL TERZIARIO
- IN PROSSIMITA DEL TETTO DELLA FORMAZIONE "HYBLA" (CRETACEO INFERIORE)
- IN PROSSIMITA DEL TETTO DELLA FORMAZIONE "BUCCHERI" (GIURASSICO SUPERIORE)
- IN PROSSIMITA DEL TETTO DELLA FORMAZIONE "STREPPENOSA" (GIURASSICO INFERIORE)
- IN PROSSIMITA DEL TETTO DELLA FORMAZIONE "TAORMINA" (TRIASSICO SUPERIORE)

NOTA:

- LA COLORAZIONE VERDE INDICA LA PROBABILE PRESENZA DI VULCANITA
- LE FAGLIE NORMALI SONO INDICATE IN ROSSO
- LE FAGLIE INVERSE SONO INDICATE IN NERO