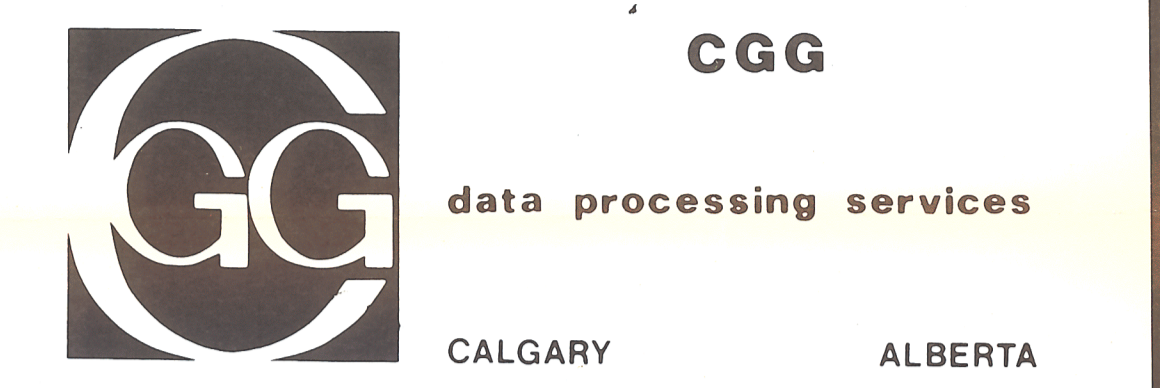


1479 10 21



HUDSON BAY OIL AND GAS CO. LTD.

SICILY AREA
MIGRATION 6000%
NORMAL POLARITY
LINE HS81-04
(NW) 1 SHOTPOINTS 670 (SE)

DATE FEBRUARY 1982
REF NO 5006024
QUALITY CONTROL

FIELD RECORDING

SHOT BY CGG
DATE SHOT 01 FEB 1982
RECORDER 143388
FORMAT SEC 8
FILTER 2 125HZ
CORRECTION 6000%
GAIN
SOURCE TYPE 1440RCHOC
SF INTERVAL 25 M
RECORD LENGTH 4 SEC
SAMPLE INTERVAL 3 MSEC
SOURCE DEPTH 5 M
GROUP INTERVAL 50 M
NO OF GROUPS 68
OFFSET TO TR 1 334 M
CABLE LENGTH 3950 M
CABLE DEPTH 12 M

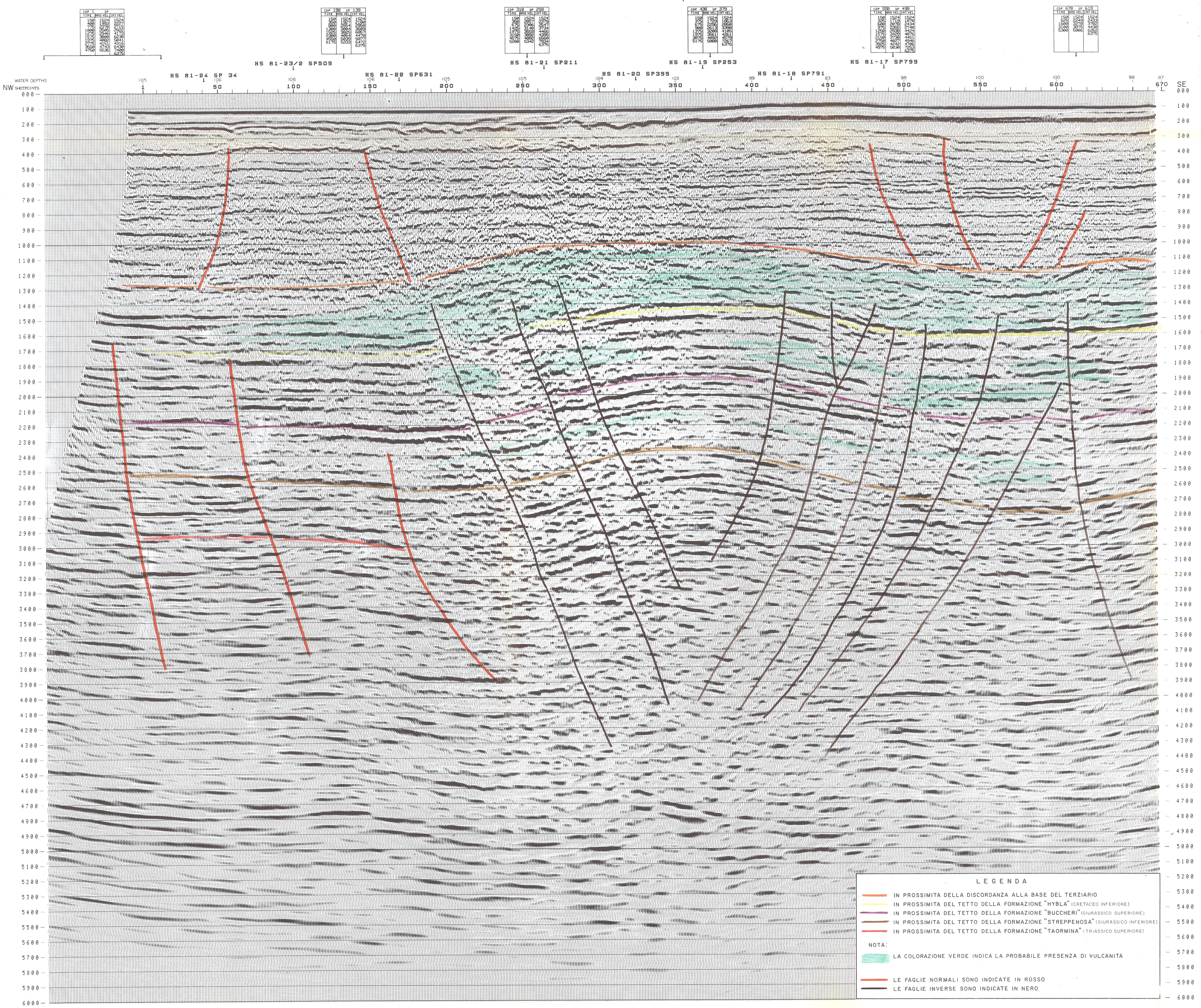
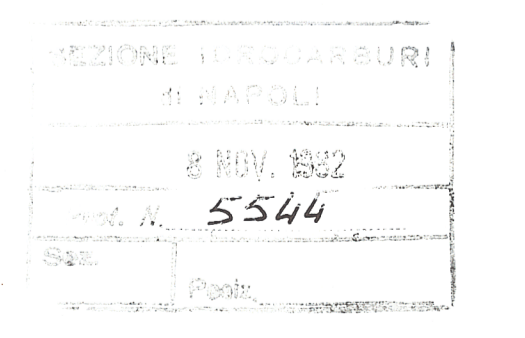
DIGITAL PROCESSING

1 DEMULTIPLY - RESAMPLE TO 4 MS
2 GAIN CORRECTION
3 EDIT
4 DECONVOLUTION 2 WINDOWS= T100-T2500
T2000-T4500
OPERATOR LENGTH= 120 MSEC
5 PREDICTIVE DECONVOLUTION - TRITH -
2 WINDOWS= T100-T1000
T2000-T4500
6 FINAL NMO AND MUTES
7 STACK - 6000%
8 PREDICTIVE DECONVOLUTION - TRITH -
1 WINDOW= T2000-T4500
9 FX FILTER
10 MIGRATION
11 TIME VARIANT FILTER
3 10-40 55 10-T1000
3 10-28 35 T2000-T4000
3 10-25 33 T5000-T6000
12 DYNAMIC EQUALIZATION
13 FILM DISPLAY 35 4TR IN 4IN SEC
10TR CM 10CM SEC

REMARKS

1 SHOT POINT MARKED W/ ANTENNA
2 VELOCITIES SHOWN ARE STACKING VELOCITIES *
* THE VELOCITIES ARE REDUCED BY 15% AT TIME 6 SEC.

ALLEGATO 7



LEGENDA

- IN PROSSIMITA DELLA DISCORDANZA ALLA BASE DEL TERZIARIO
- IN PROSSIMITA DEL TETTO DELLA FORMAZIONE "HYBLA" (CRETACEO INFERIORE)
- IN PROSSIMITA DEL TETTO DELLA FORMAZIONE "BUCCHERI" (GIURASSICO SUPERIORE)
- IN PROSSIMITA DEL TETTO DELLA FORMAZIONE "STREPPENOSA" (GIURASSICO INFERIORE)
- IN PROSSIMITA DEL TETTO DELLA FORMAZIONE "TAORMINA" (TRIASSICO SUPERIORE)

NOTA:

- LA COLORAZIONE VERDE INDICA LA PROBABILE PRESENZA DI VULCANITA
- LE FAGLIE NORMALI SONO INDICATE IN ROSSO
- LE FAGLIE INVERSE SONO INDICATE IN NERO