

ELF ITALY
 PROSPECT CR 94 PX
 LINE CR94-05
 S.P.: 1 - 550

FILTERED STACK SECTION

N. 13601

RECORDING PARAMETERS

| | |
|-----------------------|-----------------------|
| RECORDED BY: C. G. G. | DATE: JULY 1984 |
| NO. OF CHANNELS: 24 | TIME: 12:11:00 |
| NO. OF TRACES: 24 | SPIN: 0.0000 |
| NO. OF RECORDS: 1000 | RECORD LENGTH: 6 SECS |
| NO. OF GROUPS: 100 | NO. OF CHANNELS: 24 |
| NO. OF TRACES: 24 | NO. OF RECORDS: 1000 |
| NO. OF GROUPS: 100 | NO. OF CHANNELS: 24 |
| NO. OF TRACES: 24 | NO. OF RECORDS: 1000 |
| NO. OF GROUPS: 100 | NO. OF CHANNELS: 24 |
| NO. OF TRACES: 24 | NO. OF RECORDS: 1000 |

SOURCE-RECEIVER PATTERN

INTENS. SOURCE: 1 2 3 4 5 6 7 8 9 10 11 12 13 14 15 16 17 18 19 20 21 22 23 24

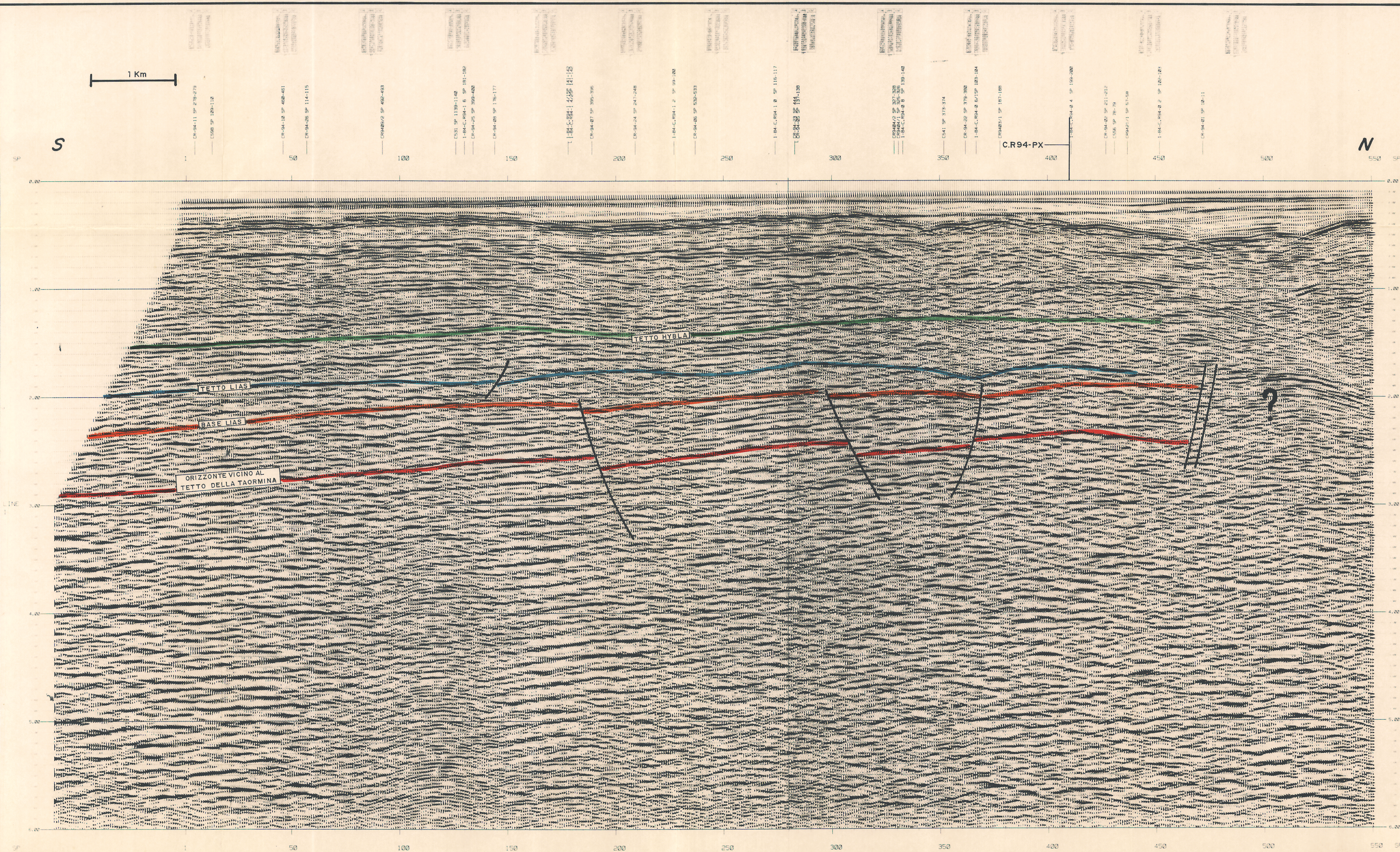
PROCESSING PARAMETERS

PROCESSED 64 FOLD COP STACK PROCESSING SAMPLE RATE 4 MS
 REFORMAT AND EDIT
 LOCATION OF SOURCE SAVED TO MAIN PHASE
 MAIN PHASE AND FILTER APPLIED CUT OFF 90 HZ TOB OUT
 AVAILABLE FROM 0.00 TO 4.00
 GAIN REMOVAL EXPERIMENTAL GAIN RATE +3 DBL FROM 0.2 SECS TO 0.2 SECS
 NOISE REMOVAL TRACE SUPPRESSION GROUPS 1 TO 8 TO GIVE 500M GROUP INTERVAL
 NOISE REMOVAL MAIN PHASE SAVED TO ZERO PHASE
 64 FOLD COP STACK
 DECONVOLUTION BEFORE STACK THRESHOLD LENGTH 100 MS OF +300 GSP
 NEAR FIELD GSP 3.0 SECS
 FAR FIELD GSP 7.0 SECS
 WAVELENGTH CORRECTION
 VELOCITY CORRECTIONS USING PARAMETERS FROM DIGICON'S VELOCITY
 ANALYSIS LOADED EVERY 100 METERS
 VELOCITY CORRECTION TO 4 FOLD AFTER DIFFERENTIAL MOVEOUT CORRECTION
 RANDOM NOISE REMOVAL USING DIGICON'S LUNA ON COMMON OFFSET SORTED DATA
 NORMAL MOVEOUT CORRECTION AND NO. STRETCH SUPPRESSION
 4 FOLD COP STACK
 SFC AND STRETCH STATIC CORRECTION +10 MSE
 WINDING DISTANCE CORRECTION
 COMMON NOISE ATTENUATION VIA FM FILTERING
 PASSING GAPS BETWEEN +8 AND -8 MS PER TRACE
 THE VIB AND DIGITAL WIND FILTERS
 TIME SECS FREQUENCY HZ
 0.0 1.0 10 50
 0.0 0.0 0 45
 0.0 0.0 0 40
 NOISE HZ
 PASSIVE PROTECTIVE FILTERING USING DIGICON'S ENHANCE
 RECHECK ORIGINAL DATA INT.
 POLARITY REVERSE

DISPLAY PARAMETERS

POLARITY CONVENTION COMPRESSION WAVE DISPLAYED AS A PEAK (BLACK)
 HORIZONTAL SCALE 1:100000 (1:100000) PARTY OTHER 1 N/A
 VERTICAL SCALE 1:1000 (1:1000) PARTY OTHER 1 N/A
 DATE 1 JANUARY 1988 REID NUMBER 1 6000
 PLOTTED ON SEISMOCOPE LASER 300 DPI 50% OVERLAP
 MILLIMETRES
 0 0.5 1.0 1.5 2.0

DIGITAL EXPLORATION LIMITED,
 FIRST BRINSTERED,
 SUSSEX, RH19 4HG,
 ENGLAND.
 PROCESSED ON A VAX 11/780 USING DIGICON'S PROPRIETARY DISCO SOFTWARE.



DIR. EXPLORATION
 Date: 11/88
 Auteur: MULLER
 Dess: CIPULLO
 N° Class: Co4I2y194
 All. 1
 AS366