

AS309

MONTEDISON

SICILY
AREA C. R. 91. ME

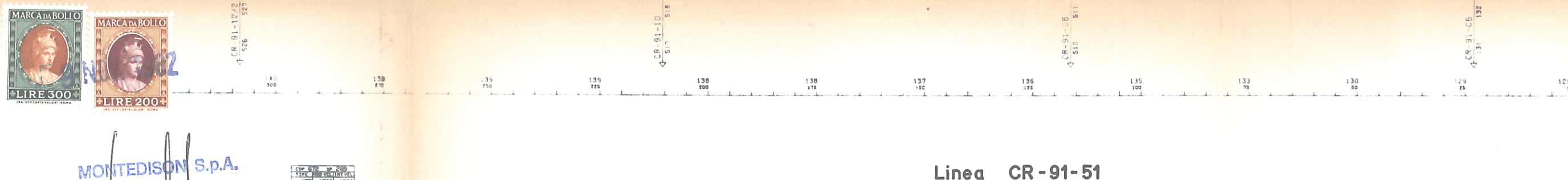
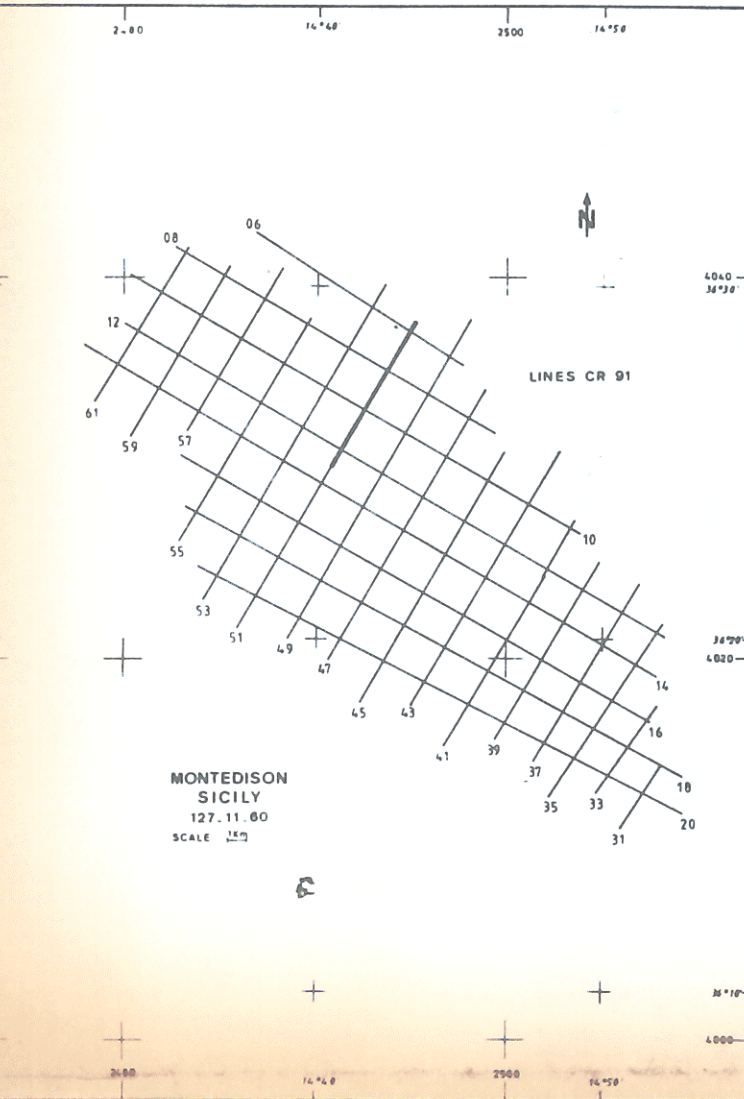
Allegato 2

SW 357 LINE CR91.51 1 NE

BOAT MOTION ←

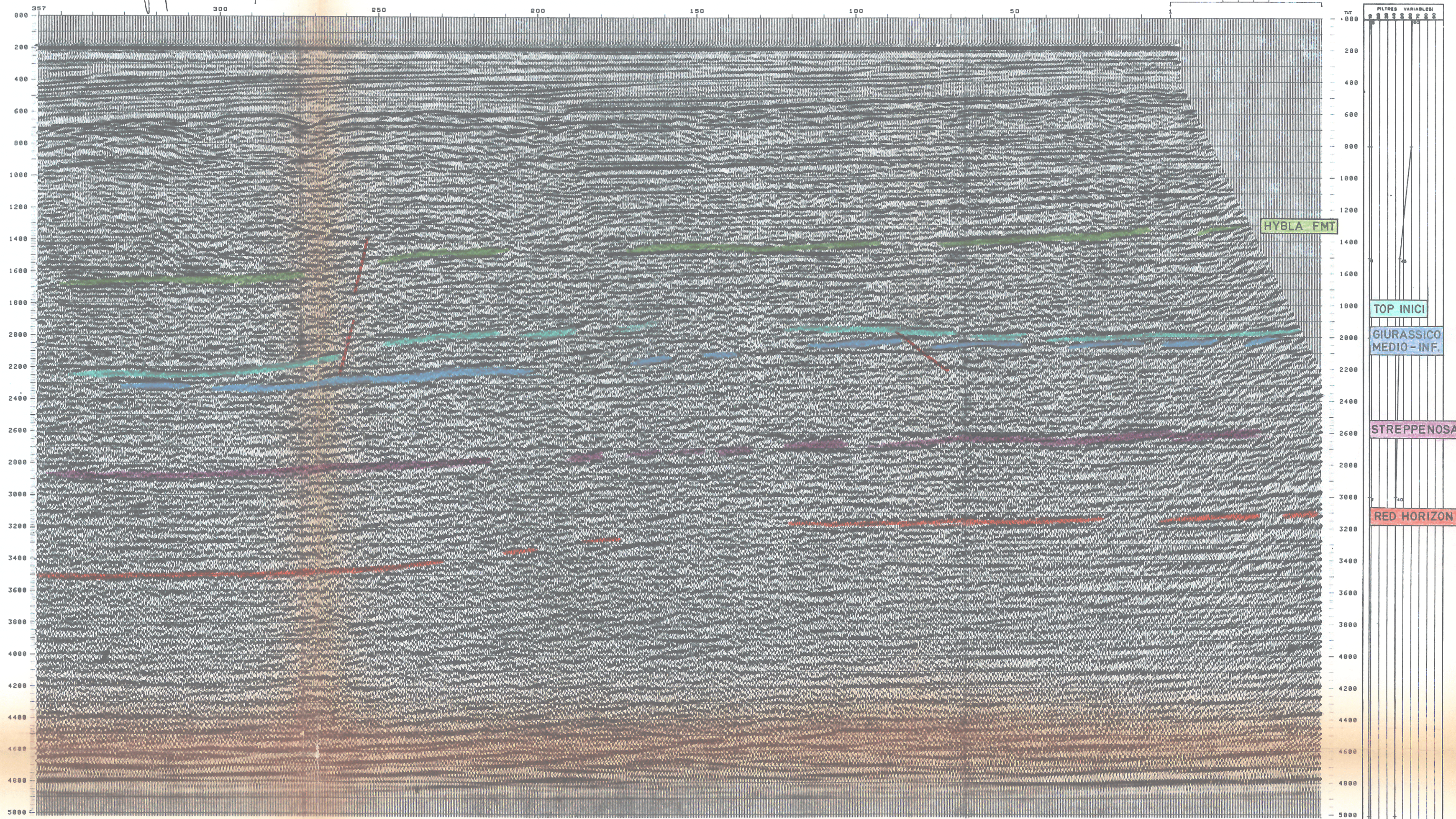
PL N° 60 M MIGRATION IN TIME JULY 28 81

FIELD RECORDING 4800 % Contractor C G G		DIGITAL PROCESSING P 5 Sequence in 4 ms	
SHIP			
POLAR BJOHN NAVIGATION BY STEDIS SHOOTING DATE DEC 28 80		AMPLITUDE RECOVERY VAPCO Division by Vapochoc signal MUTES	
INSTRUMENTS SH 338 Floating point FORBAT 8 tracks 1800 BPI FILTER 8/128 SAMPLING 2 ms		DECONVOLUTION PREDICTIVE Operator Length 200 ms Gap 22 ms Windows 200-2000 ms 2000-2800 ms	
SOURCE VAPORCHOC DEPTH 8.7 m CAPACITY 2 manual PV 80 valves SP INTERVAL 28 ms		VELOCITY ANALYSIS NBO CORRECTIONS (Linear interpolation between velocity functions)	
STREAMER LENGTH 2400 m DEPTH 15 m GROUPS 06 GROUP INTERVAL 25 m GEOPHONES HC 202 24 / TRACE		STACK 4800 % AUTO-ADAPTED PREDICTIVE DECONVOLUTION (TRIT) Operator Length 180 ms Gap 24 ms Windows 200-2000 ms 2000-2800 ms	
COMPAGNIE GENERALE DE RECHERCHES 10, Rue de Valenciennes - 91301 - MASSY - FRANCE		STATIC CORRECTION + 13 ms MIGRATION IN TIME (Wave equation) TIME VARIANT FILTER TRACE EQUALIZATION ANALOG DISPLAY (Reversed polarity)	
POLARITY Geophone compression = negative number on field tape Wave trough in display = positive reflection coefficient		TIME ORIGIN SEA LEVEL Source and streamer static correction + 13 ms	
HORIZONTAL SCALE 0.5 km 80 Traces/km			



MONTEDISON S.p.A.

Linea CR-91-51
Area con temi liassici di natura stratigrafica e/o strutturale



1271159
6888
POL
TSD
FILE