

# LINEE C87-85-03, RG-375-83V

C R87 CO DUPONT CONID

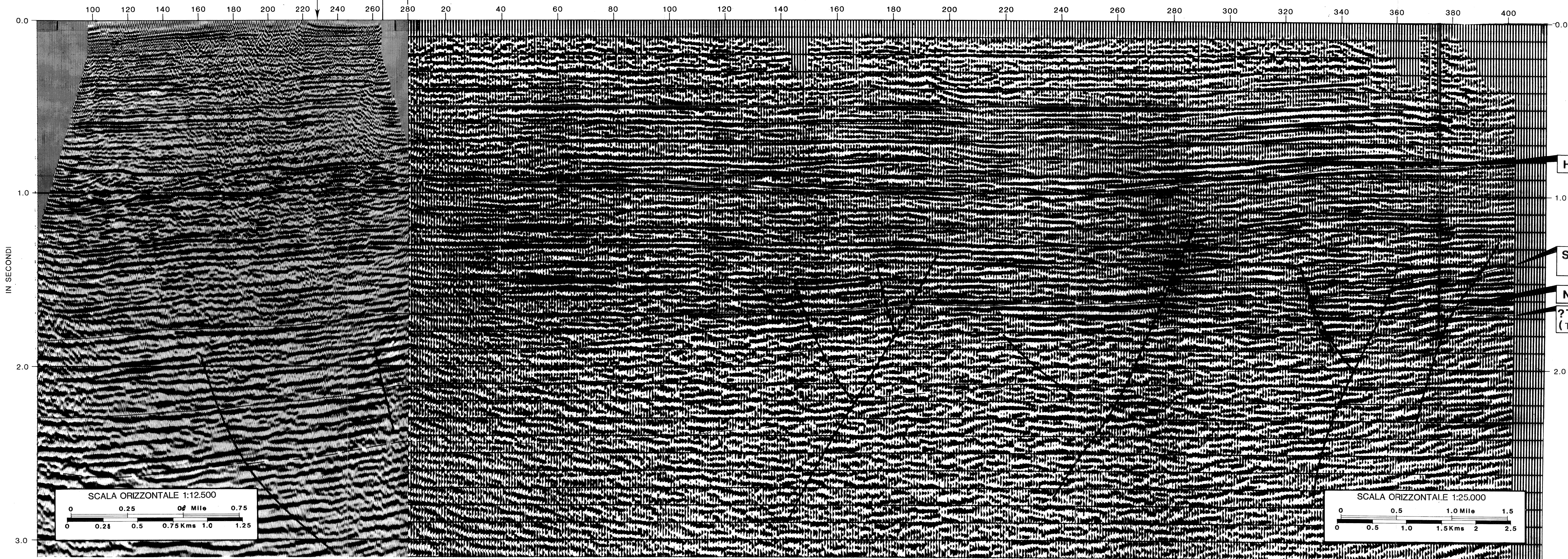
SO

C87-85-08

NE SO

CARRUBO-1

NE

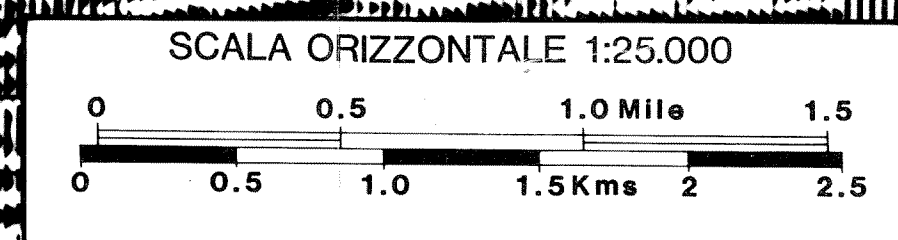
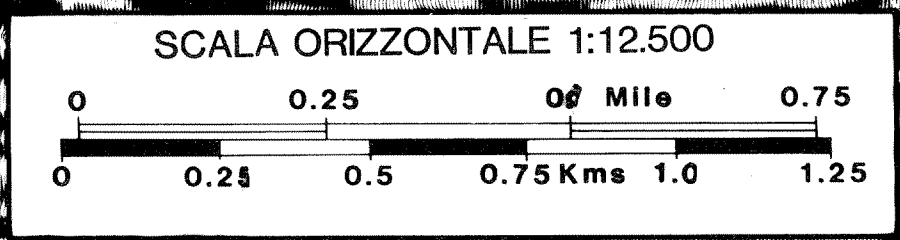


HYBLA (CRET. INF.)

STREPPENOSA  
(GIURASSICO INF.)

NOTO (TRIASSICO SUP.)

?TAORMINA  
(TRIASSICO SUP.)



DUPONT CONID SpA  
PERMESSO C.R87.CO

LINEE SISMICHE  
C87-85-03  
RG-375-83V