

Party: 127.11.59

ELF

SICILY  
AREA C. R 78. LF

NW 200 LINE CR78.110 1 SE

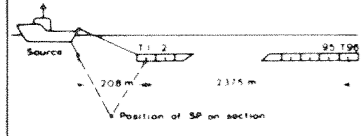
BOAT MOTION ←

PL N° 47

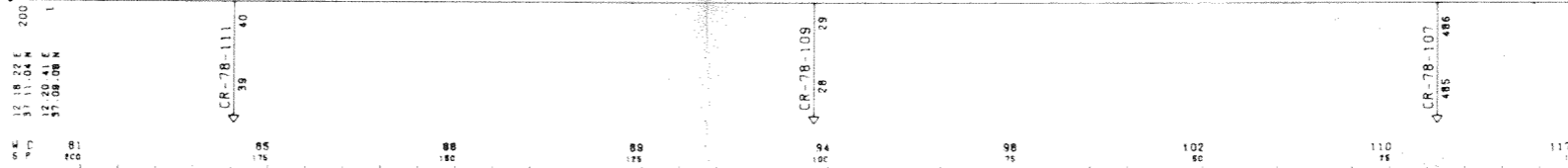
STACK 4800%.DBAS.TVF

APR 16 81

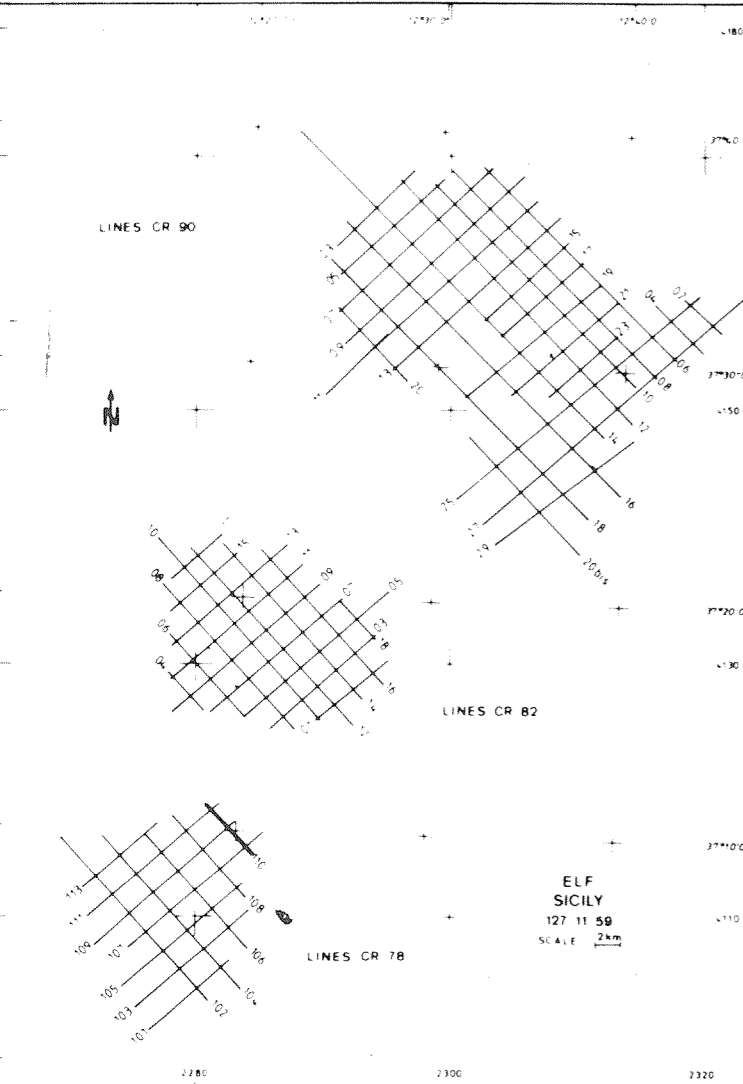
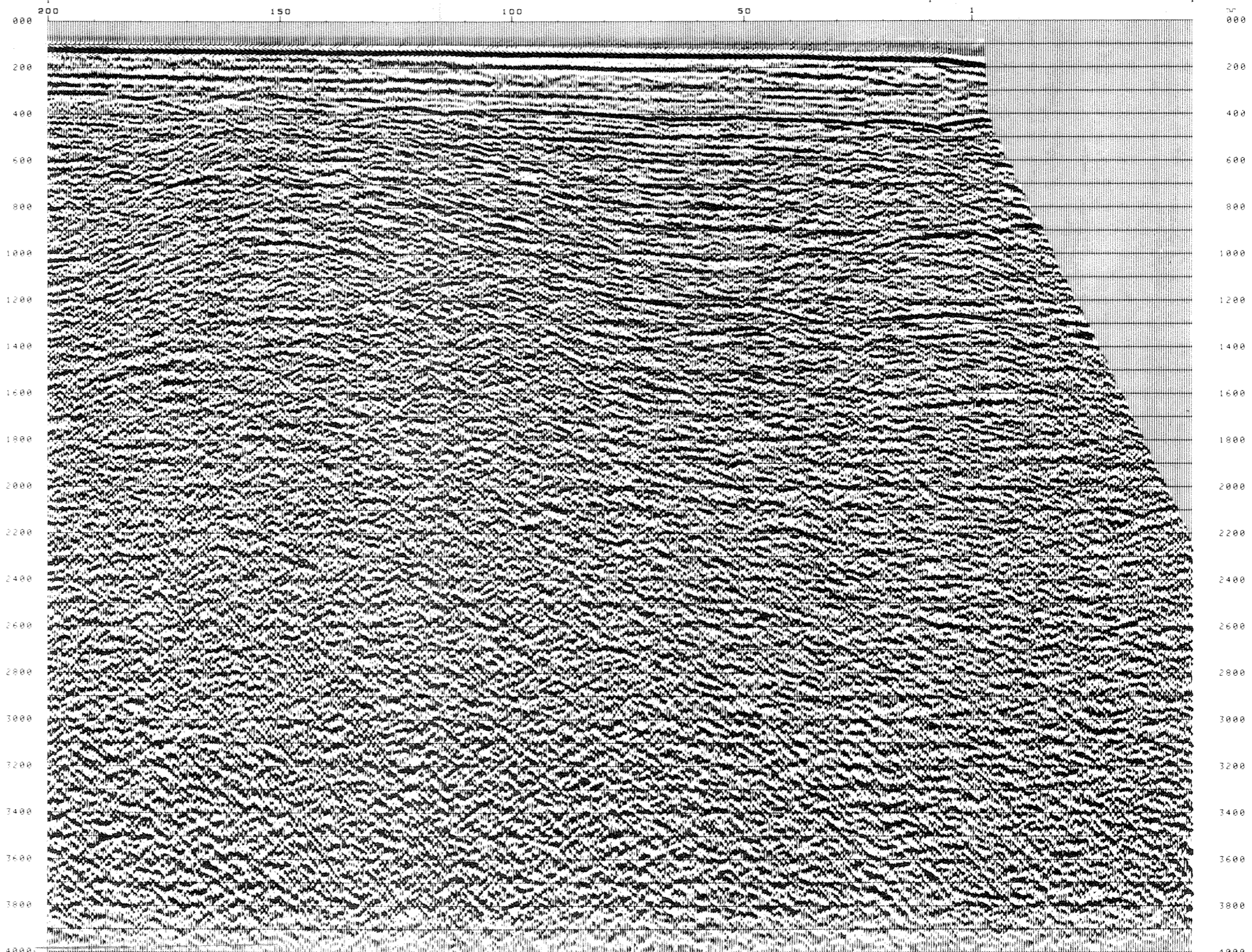
FIELD RECORDING 4800 % Contractor C G G		DIGITAL PROCESSING P 5 Sequence in 4 ms	
SHIP			
POLAR BORN		AMPLITUDE RECOVERY	
NAVIGATION BY SYLEDIS		VAPCO - Division by vaporchoc signal	
SHOOTING DATE NOV 20 80		MUTES	
INSTRUMENTS			
SN 338 floating point		DECONVOLUTION PREDICTIVE	
FORMAT 9 tracks 1600 BPI		Operator Length 200 ms Gap 32 ms	
FILTER 8 125		Windows 200 1500 ms	
SAMPLING 7 ms		1500 3000 ms	
SOURCE			
VAPORCHOC		VELOCITY ANALYSIS	
DEPTH 5.7 m		NMO CORRECTIONS (Linear interpolation Between velocity functions)	
CAPACITY 2 monoval PV 80 valves		STACK 4800 %	
SP INTERVAL 25 m		AUTO ADAPTED PREDICTIVE DECONVOLUTION (TRITAI)	
		Operator Length 140 ms	
		Windows 200 1500 ms	
		1500 3000 ms	
STREAMER			
LENGTH 2400 m		STATIC CORRECTION - 13 ms	
DEPTH 14 m		TIME VARIANT FILTER	
GROUPS 96		TRACE EQUALIZATION	
GROUP INTERVAL 25 m		ANALOG DISPLAY (Reversed polarity)	
GEOPHONES HC 202 24 TRACE			



COMPAGNIE GENERALE DE GEOPHYSIQUE  
6, Rue Galvani, 91301 MASSY - FRANCE



1271159  
6090  
1 POL  
2 ISD  
1 FILE



SEZ  
IRI  
- 7 DIC. 1981  
P. 6202  
Sez.  
FUSIL