

Party: 127.11.59 ELF

SICILY  
AREA C.R.78.LF

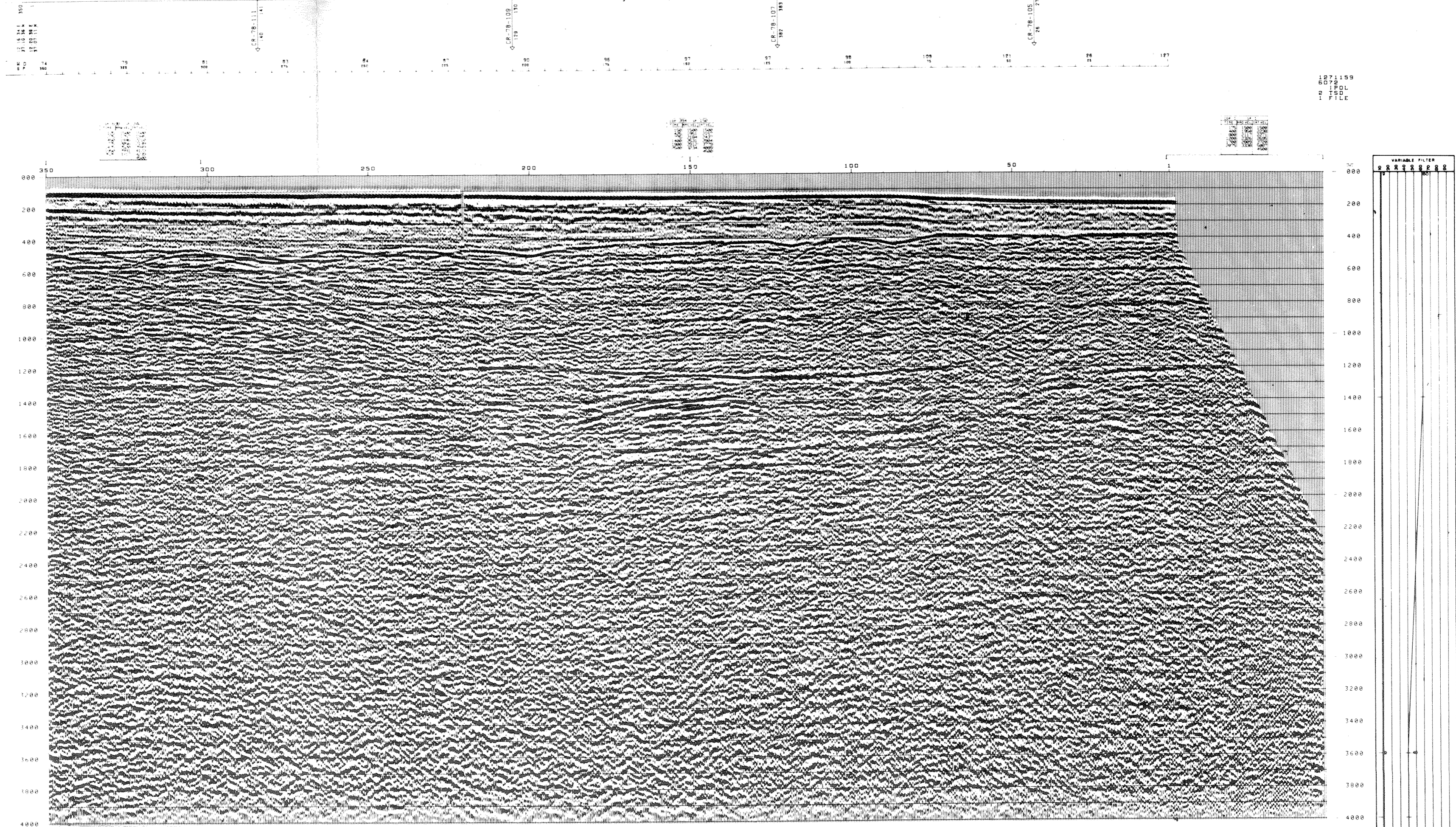
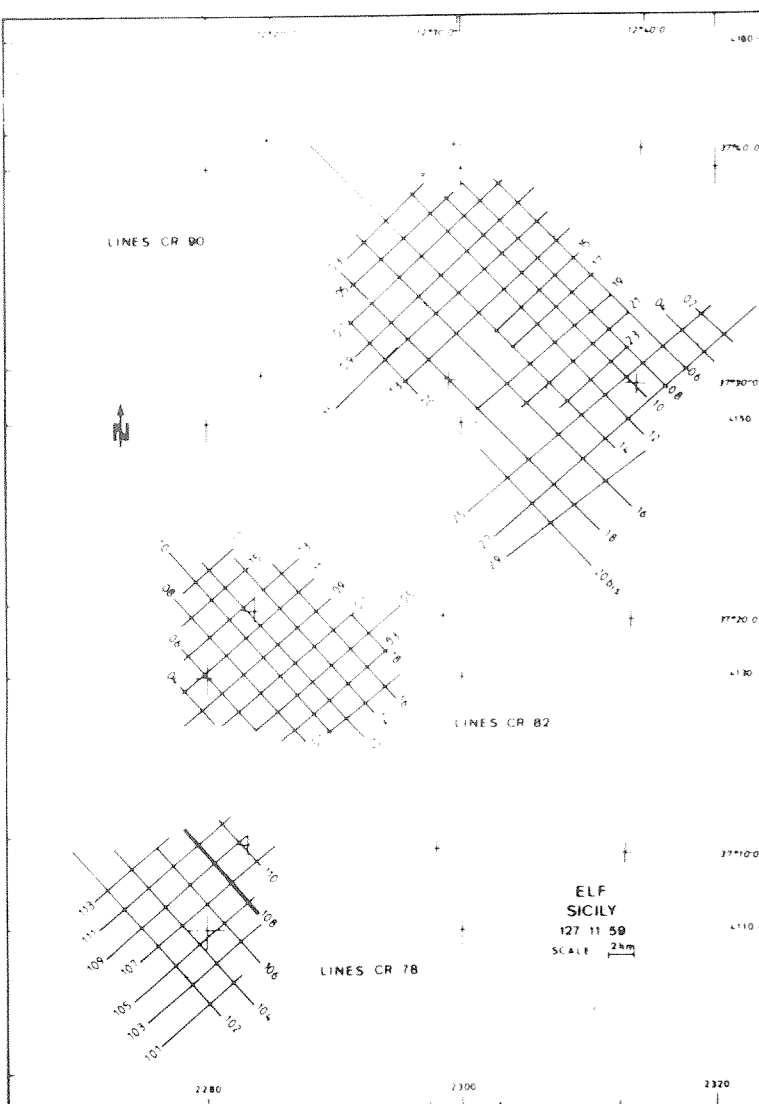
NW 350 LINE CR78.108 1 SE

BOAT MOTION ←

PL N° 58 STACK 4800% DBAS.TVF APR 22 81

<p><b>FIELD RECORDING 4800 %</b> Contractor: C.G.G.</p> <p><b>SHIP</b></p> <p>POLAR BORN NAVIGATION BY: SYLEDIS SHOOTING DATE: 07.12.80</p> <p><b>INSTRUMENTS</b></p> <p>SN: 338 (floating point) FORMAT: 9 tracks 1800 SPI FILTER: 8.125 SAMPLING: 2 ms</p> <p><b>SOURCE</b></p> <p>WAPORCHOC DEPTH: 5.3 m CAPACITY: 2 monojet PV 80 valves SP INTERVAL: 25 m</p> <p><b>STREAMER</b></p> <p>LENGTH: 2400 m DEPTH: 14 m GROUPS: 90 GROUP INTERVAL: 25 m GEOPHONES HC 202: 34 TRACE</p>	<p><b>DIGITAL PROCESSING P5</b> Sequence in 4 ms</p> <p><b>AMPLITUDE RECOVERY</b> VAPCO: Division by Vapochoc signal</p> <p><b>MUTES</b></p> <p><b>DECONVOLUTION PREDICTIVE</b> Operator length: 200 ms Gap: 32 ms Windows: 200 1500 ms 1500 3000 ms</p> <p><b>VELOCITY ANALYSIS</b> NMO CORRECTIONS: Linear interpolation between velocity functions</p> <p>STACK: 4800 % AUTO ADAPTED PREDICTIVE DECONVOLUTION (TRIAL) Operator length: 140 ms Gap: 24 ms Windows: 200 1500 ms 1500 3000 ms</p> <p>STATIC CORRECTION: -13 ms TIME VARIANT FILTER TRACE EQUALIZATION ANALOG DISPLAY: Reversed polarity</p> <p><b>POLARITY</b> Geophone compression: negative number on field tape White trough on display: positive reflector coefficient</p> <p>LIME ORIGIN: SEA LEVEL Source and streamer static correction: -13 ms</p> <p><b>HORIZONTAL SCALE</b> 80 Traces/km</p>
--	--

COMPAGNIE GÉNÉRALE DE GÉOPHYSIQUE  
6 Rue Bataillon 9301 MASSY FRANCE



7 DIC. 1981  
6002