

Party: 127.11.59 ELF

SICILY
AREA C. R 78. LF

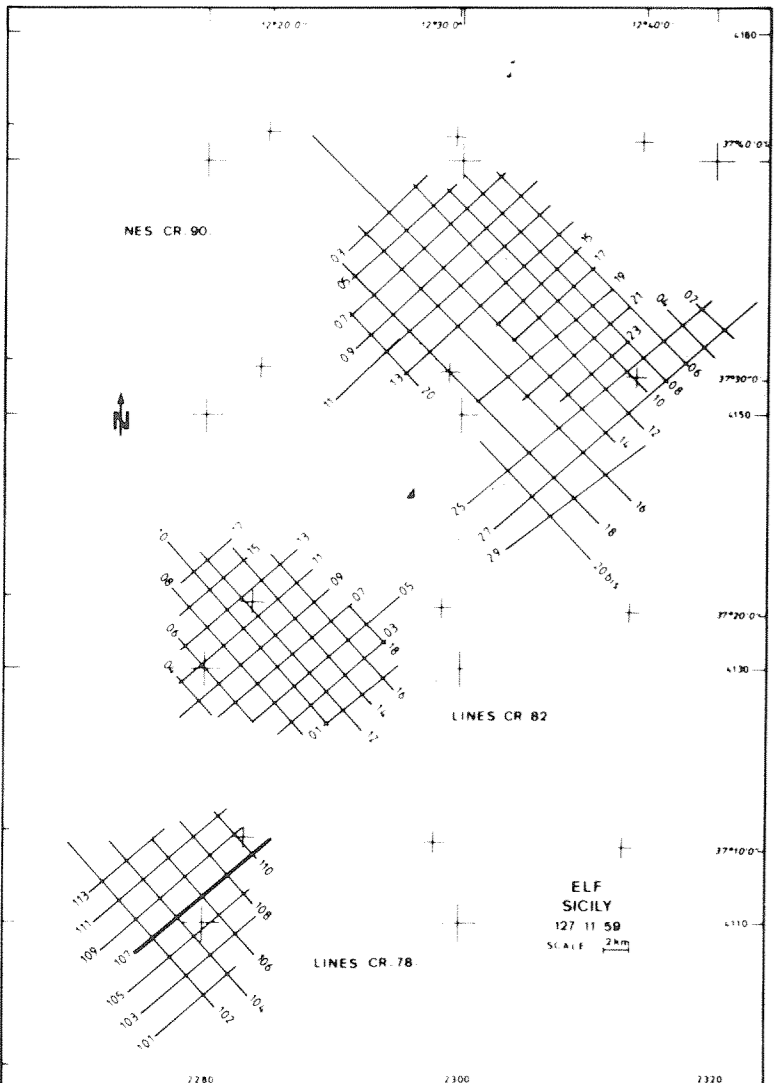
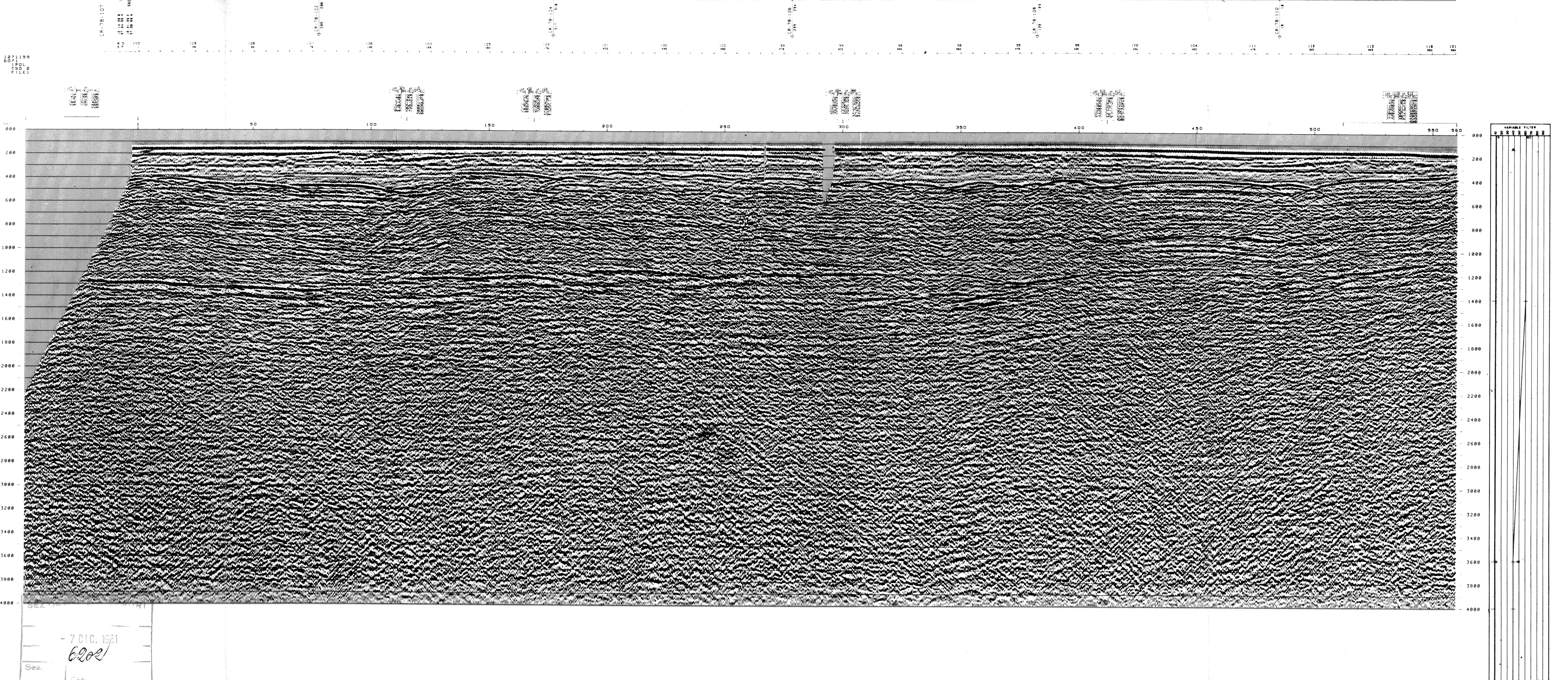
SW 1 LINE CR 78.107 560 NE

BOAT MOTION →

PL N° 52 STACK 4800% DBAS TVF APR 21 81

<p>FIELD RECORDING 4800 % Contractor: C. G. G.</p> <p>SHIP POLAR BORN: SYLEDIS NAVIGATION BY: DECTIO 80 SHOOTING DATE: DECTIO 80</p> <p>INSTRUMENTS SN 338: floating point FORMAT: 9 tracks 1600 BP FILTER: 8.125 SAMPLING: 2 ms</p> <p>SOURCE VAPORCHOC DEPTH: 5.7 m CAPACITY: 2 modular PV 80 valves SP INTERVAL: 25 m</p> <p>STREAMER LENGTH: 2400 m DEPTH: 46 m GROUPS: 96 GROUP INTERVAL: 25 m GEOPHONES HC 202: 24 TRACE</p>	<p>DIGITAL PROCESSING P.5 Sequence in 4 ms</p> <p>AMPLITUDE RECOVERY LAPCO: Division by vaporchoc signal MUTES DECONVOLUTION: PREDICTIVE Operator Length: 200 ms Gap: 32 ms Windows: 1500 3000 ms</p> <p>VELOCITY ANALYSIS NMO CORRECTIONS: Linear interpolation between velocity functions</p> <p>STACK 4800 % AUTO ADAPTED PREDICTIVE DECONVOLUTION (TRIA) Operator Length: 140 ms Gap: 24 ms Windows: 1500 3000 ms</p> <p>STATIC CORRECTION: 13 ms</p> <p>TIME VARIANT FILTER TRACE EQUALIZATION ANALOG DISPLAY: (Reversed polarity)</p> <p>POLARITY Geophone compression: negative number on field tape White trough on display: positive reflection coefficient</p> <p>TIME ORIGIN: SEA LEVEL Source and streamer static correction: 13 ms</p> <p>HORIZONTAL SCALE: 0.5 km 80 Traces/km</p>
---	--

COMPAGNIE GENERALE DE GEOPHYSIQUE
1, Rue General KISS, MASTY, FRANCE



- 7 DIC. 1981
6202
Sez.