

SICILY  
AREA C R 78 LF

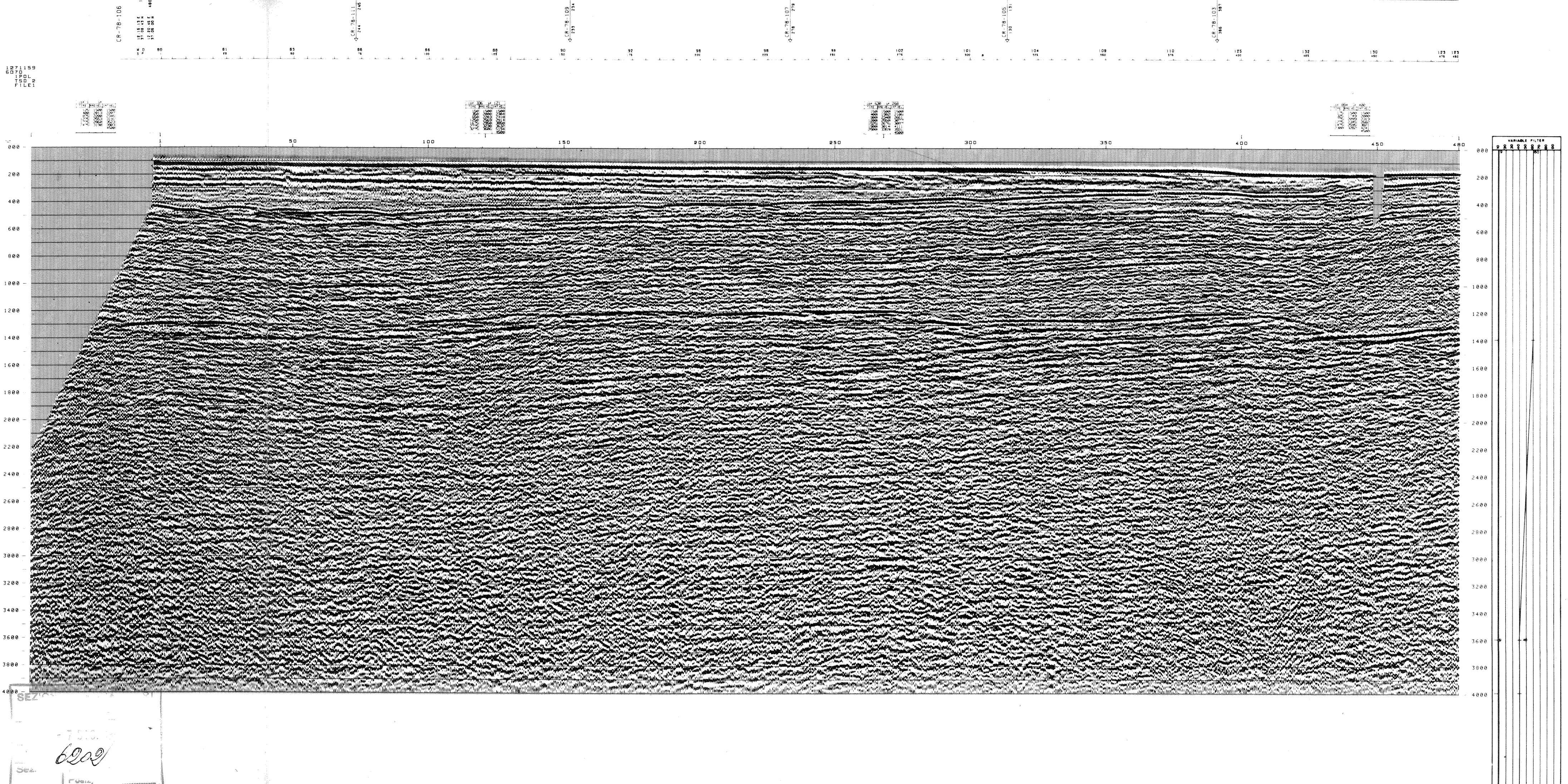
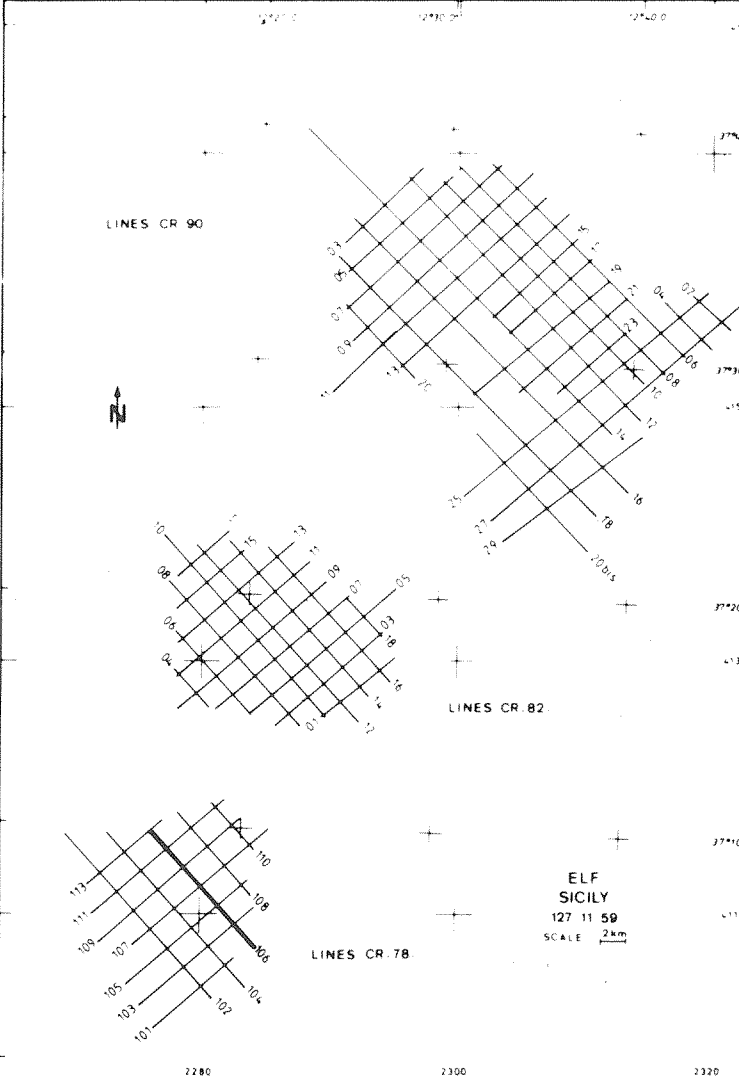
NW 1 LINE CR78.106 480 SE

BOAT MOTION →

PL N° 51 STACK 4800% DBAS TVF APR 21 81

FIELD RECORDING 4800 % Contractor C G G		DIGITAL PROCESSING P 5 Sequence in 4 ms	
SHIP			
ROLLS RUM NAVIGATION BY SKEDIS SHOOTING DATE DEC 10 80		AMPLITUDE RECOVERY VARIABLE GAIN BY VERTICAL SIGN MUTES	
INSTRUMENTS SM 338 floating point FORMAT 8 tracks 1600 80 FILTER 8.125 SAMPLING 2 ms		DECONVOLUTION PREPLOT Operator Length 200 ms Gap 32 ms Windows 200 1500 ms 1500 3000 ms	
SOURCE HYDROPHONE 5.7 m DEPTH 2 monojet PV 80 valves CAPACITY large bubble configuration 25 m SP INTERVAL 25 m		VELOCITY ANALYSIS NMO CORRECTIONS Linear interpolation between velocity functions	
STREAMER LENGTH 2400 m DEPTH 14 m GROUPS 96 GROUP INTERVAL 25 m GEOPHONES HC 202 24 TRACE		STACK 4800 % ADAPTED PREPLOTIVE DECONVOLUTION PREPLOT Operator Length 140 ms Gap 24 ms Windows 200 1500 ms 1500 3000 ms STATIC CORRECTION -13 ms TIME VARIANT FILTER TRACE EQUALIZATION ANALOG DISPLAY Reversed polarity	
POLARITY Geophone compression negative number on field tape White trough on display positive reflection coefficient		TIME ORIGIN SEA LEVEL Source and streamer static correction -13 ms	
HORIZONTAL SCALE 80 Traces km			

COMPAGNIE GENERALE DE GEOPHYSIQUE  
8 Rue Galvani 93301 MASSY FRANCE



SEZ  
-7510  
6202