

Party: 127.11.59 **ELF**

SICILY
AREA C. R 78. LF

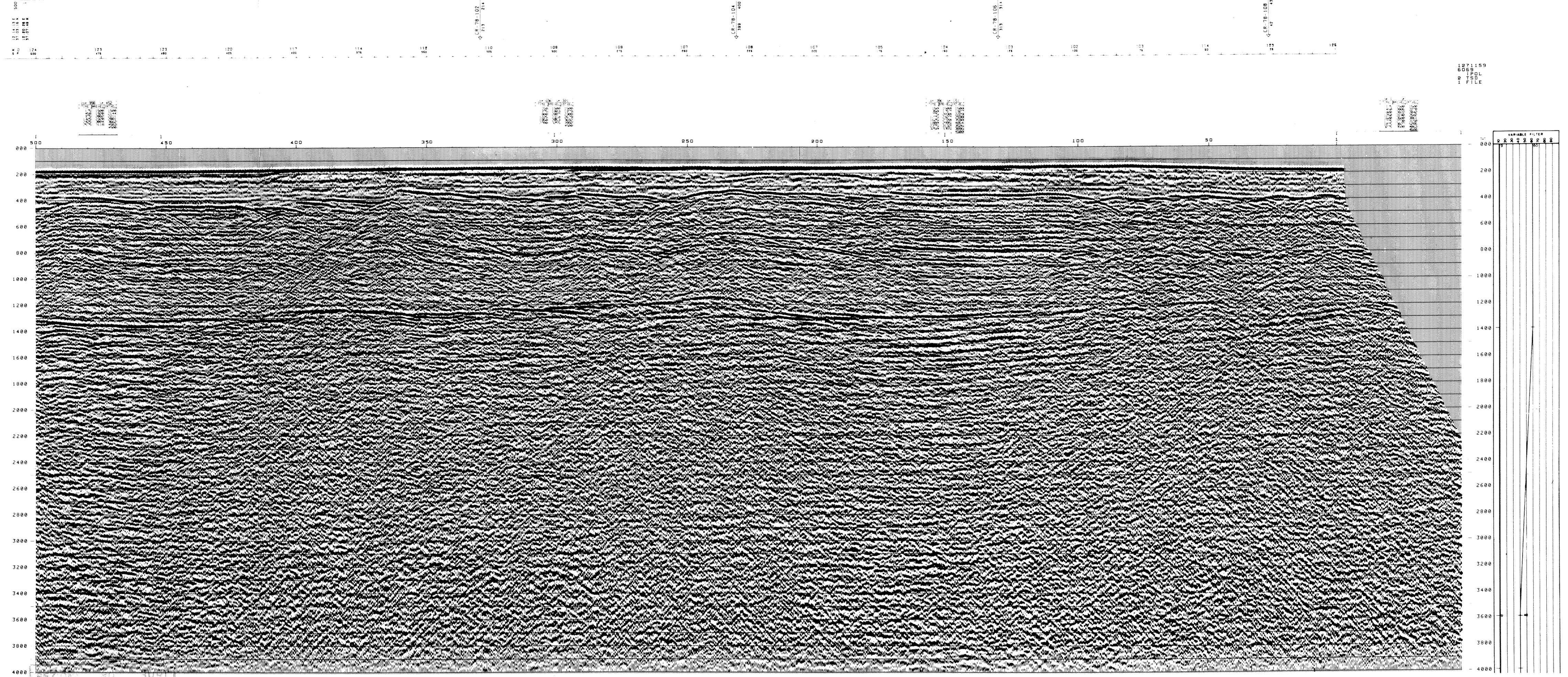
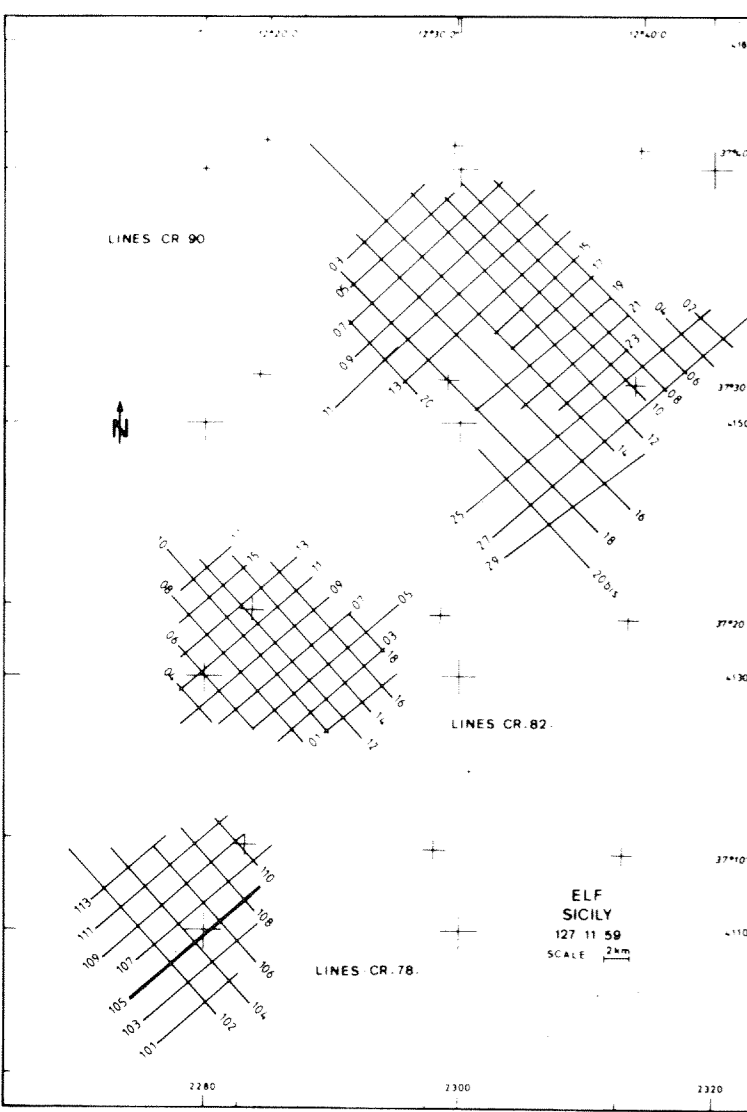
SW 500 LINE CR 78.105 1 NE

BOAT MOTION ←

PL N° 61 STACK 4800% DBAS TVF APR 23 81

FIELD RECORDING 4800 % Contractor C.G.G.		DIGITAL PROCESSING P.5 Sequence in 4 ms	
SHIP			
POLAR BORN		AMPLITUDE RECOVERY	
NAVIGATION BY 54.EDIS		APCO Division by Vapochic signal	
SHOOTING DATE 01.10.80		MUTES	
INSTRUMENTS			
SN 338 floating point		DECONVOLUTION PREDICTIVE	
FORMAT 9 tracks 1800 BPI		Operator Length 200 ms Gap 12 ms	
FILTER 8.125		Windows 200 1500 ms	
SAMPLING 2 ms		1500 3000 ms	
SOURCE			
VAPORCHOC		VELOCITY ANALYSIS	
DEPTH 5 m		NMO CORRECTIONS Linear interpolation	
CAPACITY 2 model PV 80 valves		Between velocity functions	
SP INTERVAL 25 m		STACK 4800 %	
STREAMER			
LENGTH 2400 m		AUTO ADAPTED PREDICTIVE DECONVOLUTION (TRIT)	
DEPTH 14 m		Operator Length 140 ms	
GROUPS 96		Windows 200 1500 ms	
GROUP INTERVAL 25 m		1500 3000 ms	
GEOPHONES HC 202 24 TRACE		STATIC CORRECTION 13 ms	
		TIME VARIANT FILTER	
		TRACE EQUALIZATION	
		ANALOG DISPLAY (Reversed polarity)	
POLARITY			
Geophone compression negative number on field tape			
White trough on display positive reflection coefficient			
TIME ORIGIN SEA LEVEL			
Source and streamer static correction 13 ms			
HORIZONTAL SCALE 0.5 km			
80 Traces/km			

COMPAGNIE GENERALE DE GEOPHYSIQUE
R. Des Gueules 91301 MASSY, FRANCE



7 DIC 1981
6209

1271159
6058
130L
9
1 FILE