

Party 127.11.59

ELF

SICILY
AREA C.R.78.LF

SW 330

LINE CR78.101

1 NE

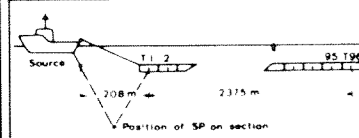
BOAT MOTION ←

PL N° 60

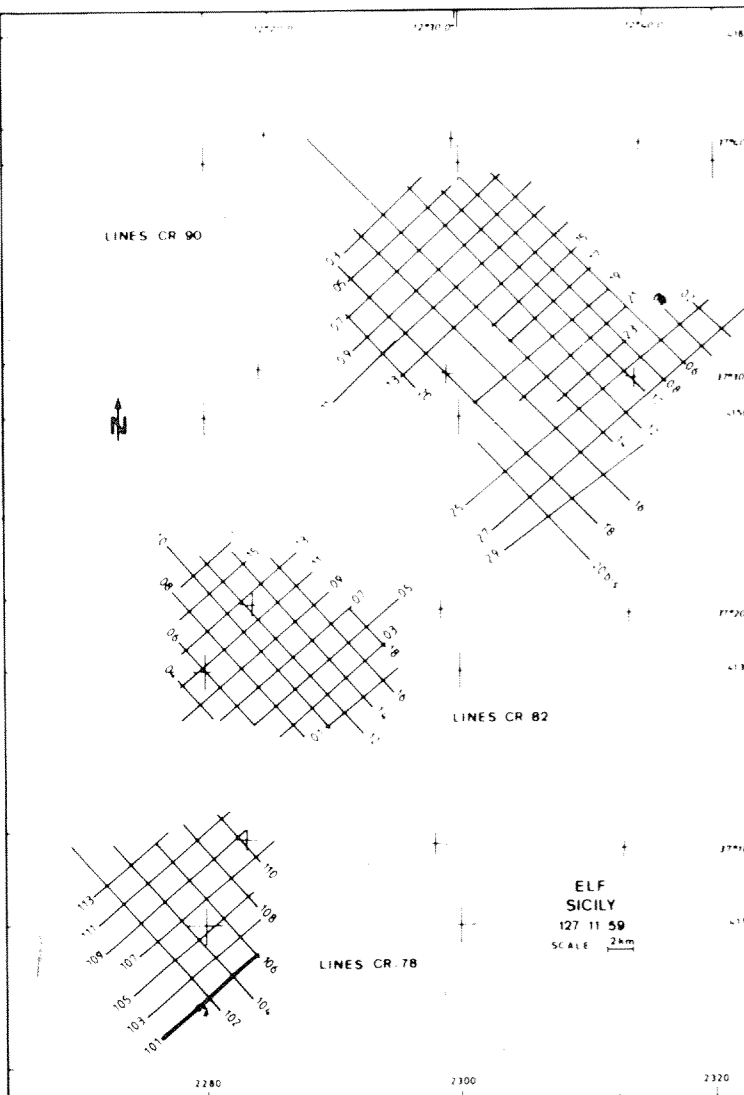
STACK 4800%.DBAS.TVF

APR 23 81

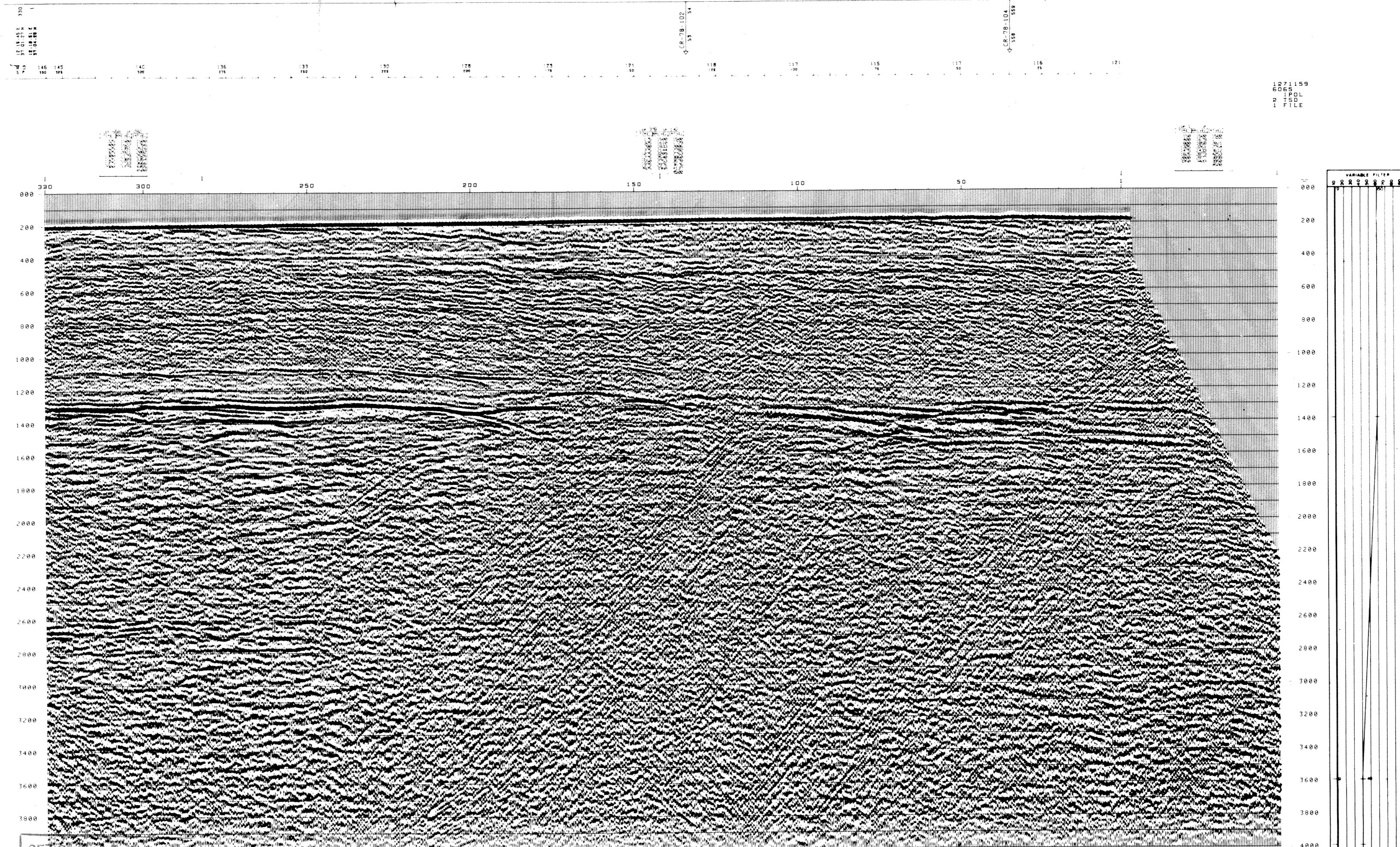
FIELD RECORDING 4800 % Contractor C.G.G.		DIGITAL PROCESSING P.5 Sequence in 4 ms	
SHIP		AMPLITUDE RECOVERY	
POLAR BJOERN		VAPCO Division by vaporchoc signal	
NAVIGATION BY SYLEDIS		MUTES	
SHOOTING DATE DEC 11 80		DECONVOLUTION PREDICTIVE	
INSTRUMENTS		Operator length 200 ms	
SN 338		Windows 200 1500 ms	
FORMAT 9 tracks 1600 BP		1500 3000 ms	
FILTER 8 125		VELOCITY ANALYSIS	
SAMPLING 2 ms		NMO CORRECTIONS Lines interpolation	
SOURCE		STACK 4800 %	
VAPORCHOC		AUTO ADAPTED PREDICTIVE DECONVOLUTION (BITA)	
DEPTH 5.7 m		Operator length 140 ms	
CAPACITY 2 monoel PV 80 valves		Windows 200 1500 ms	
SP INTERVAL 25 m		1500 3000 ms	
STREAMER		STATIC CORRECTION 13 ms	
LENGTH 2400 m		TIME VARIANT FILTER	
DEPTH 14 m		TRACE EQUALIZATION	
GROUPS 96		ANALOG DISPLAY Reversed polarity	
GROUP INTERVAL 25 m		POLARITY	
GEOPHONES HC 202 24 TRACE		Geophone compression negative number on field tape	
TIME ORIGIN SEA LEVEL		White trough on display positive reflection coefficient	
HORIZONTAL SCALE 0.5 km		Source and streamer static correction 13 ms	
80 traces/km			



COMPAGNIE GENERALE DE GEOPHYSIQUE
4, Rue Galvani 91301 MASSY FRANCE



ELF
SICILY
127.11.59
SCALE 25m



1271159
6065
1PDL
2150
1 FILE

Sez. 7 DIC. 1981
6002
0812