

Party: 127.11.59

ELF

SICILY  
AREA C.R.78.LF

ALL. 5

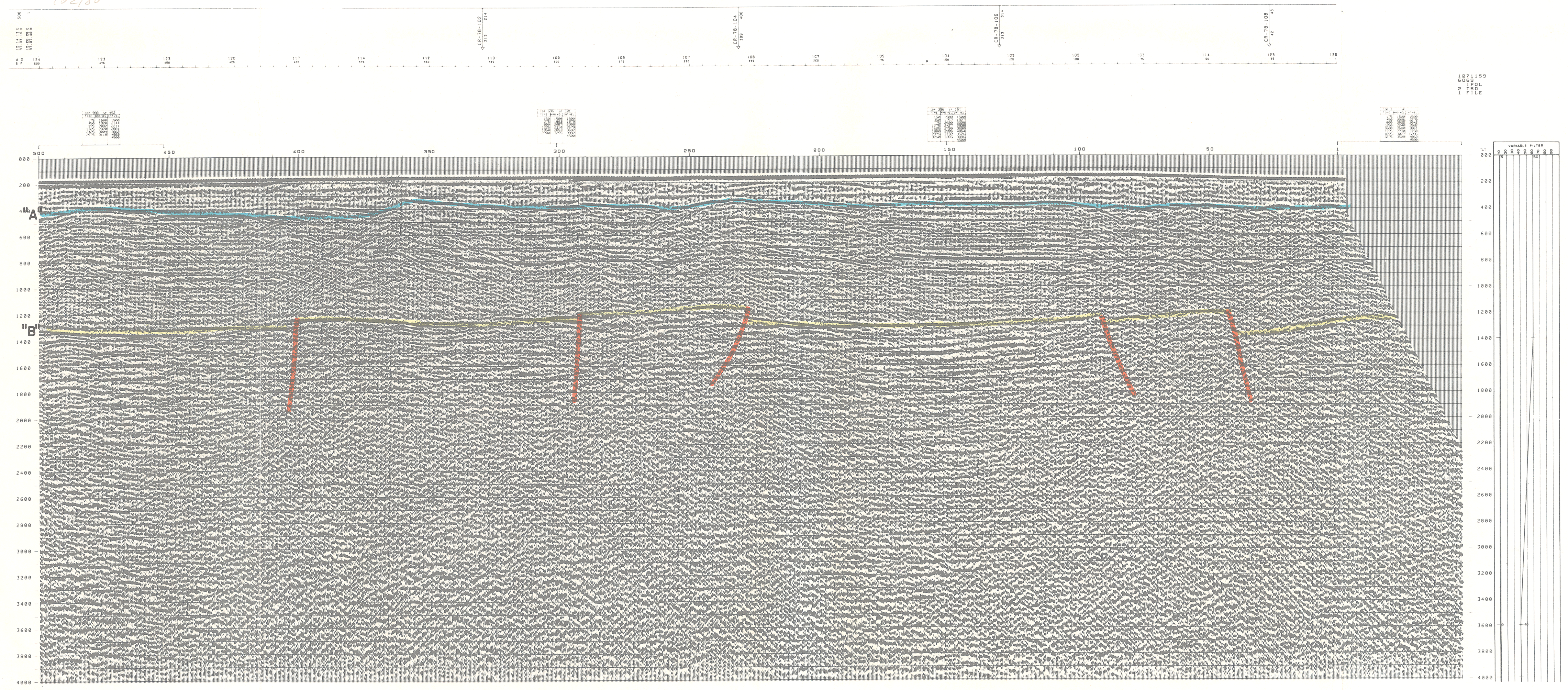
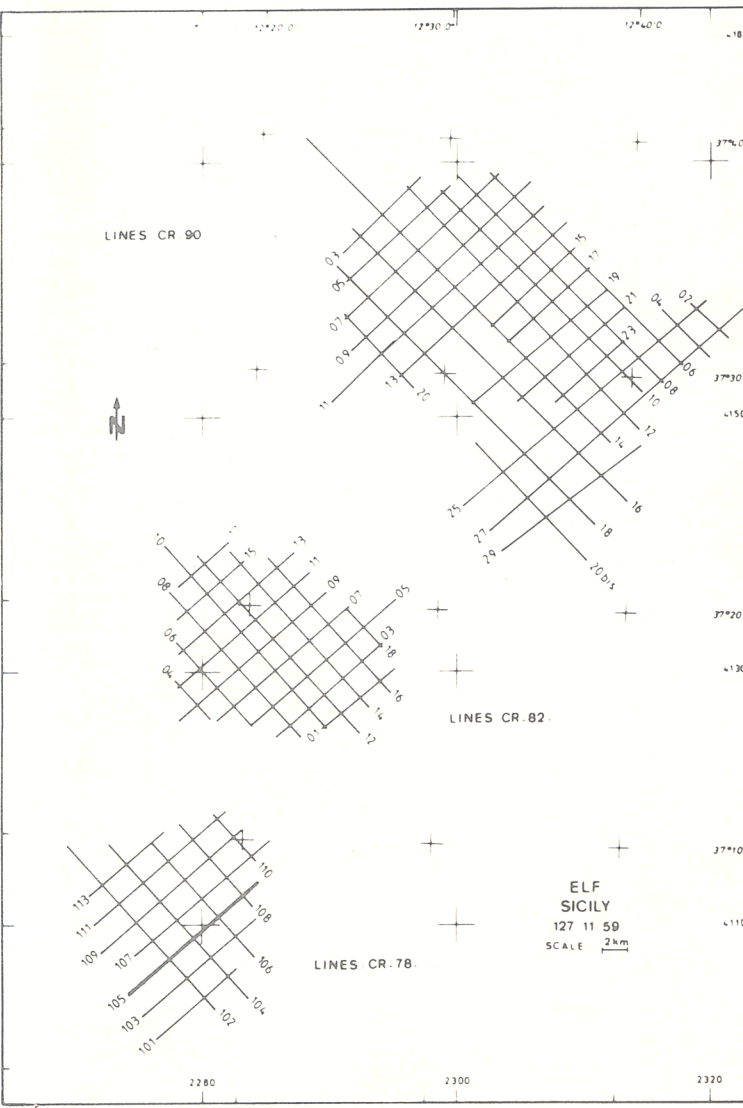
SW 500 LINE CR78.105 1 NE

BOAT MOTION ←

PL N° 61 STACK 4800%.DBAS.TVF APR 23 81

FIELD RECORDING 4800 % Contractor C G G		DIGITAL PROCESSING P 5 Sequence in 4 ms	
SHIP			
POLAR BJOIN		AMPLITUDE RECOVERY	
NAVIGATION BY		VAPCO : Division by Vapochol signal	
SHOOTING DATE		MUTES	
INSTRUMENTS			
SN 338		DECONVOLUTION PREDICTIVE	
FORMAT		Operator Length 200 ms Gap 32 ms	
FILTER		Windows 200 1500 ms	
SAMPLING		500 3000 ms	
SOURCE			
VAPORCHOC		VELOCITY ANALYSIS	
DEPTH		NMO CORRECTIONS : Linear interpolation between velocity functions	
CAPACITY		STACK 4800 %	
SP INTERVAL		AUTOMATIC ADAPTED PREDICTIVE DECONVOLUTION (TRIT4)	
STREAMER		Operator Length 140 ms Gap 24 ms	
LENGTH		Windows 200 1500 ms	
DEPTH		500 3000 ms	
GROUPS		STATIC CORRECTION - 13 ms	
GROUP INTERVAL		TIME VARIANT FILTER	
GEOPHONES HC 202		TRACE EQUALIZATION	
		ANALOG DISPLAY : Reversed polarity	
POLARITY			
Geophone compression - negative number on field tape			
White trough on display - positive reflection coefficient			
TIME ORIGIN SEA LEVEL			
Source and streamer static correction - 13 ms			
HORIZONTAL SCALE			
80 traces / km			

COMPAGNIE GENERALE DE GEOPHYSIQUE  
8, Rue Gabriel - 91301 MASSY - FRANCE



1271159  
6069  
1POL  
8 TSD  
1 FILE