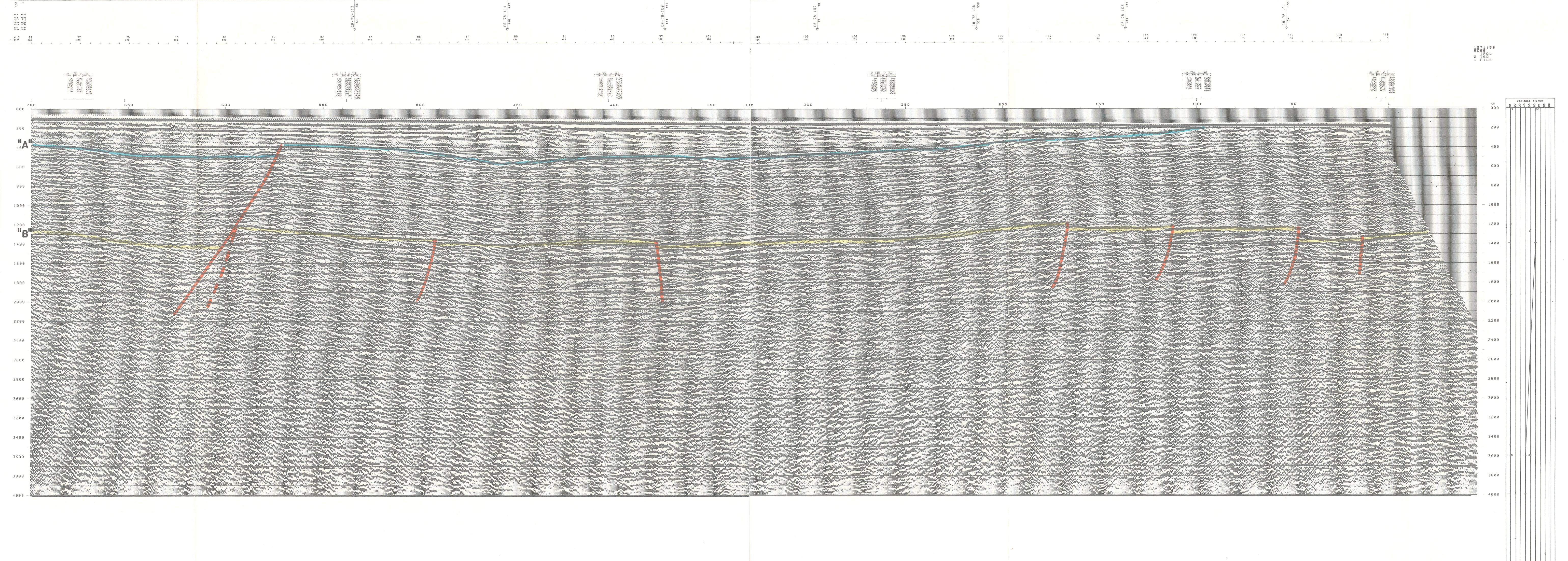
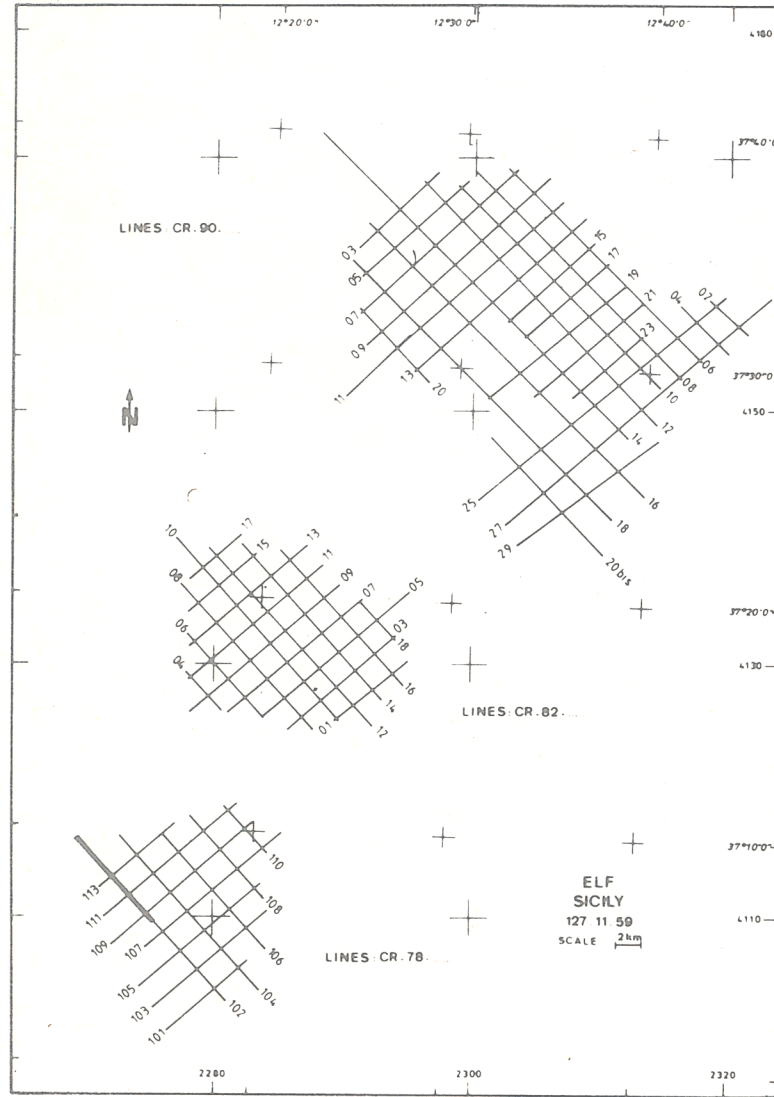


Part 127.11.59 **ELF**  
**ALL. 3**  
 SICILY  
 AREA C. R 78. LF  
 NW 700 LINE CR78.102 331 SE  
 BOAT MOTION ←

PL N° 42 STACK 4800%.DBAS.TVF APR 10 81

FIELD RECORDING 4800 % Contractor C.G.G.	DIGITAL PROCESSING P.5 Sequence in 4 ms
<b>SHIP</b> POLAR ROOM NAVIGATION BY 514203 SHOOTING DATE 01/10/80	<b>AMPLITUDE RECOVERY</b> VELOCITY DIVISION by Vapourchoc signal MULTIS
<b>INSTRUMENTS</b> SN 338 Floating point FORBAT 9 tracks 1600 BP FILTER 8175 SAMPLING 2 ms	<b>DECONVOLUTION PREDICTIVE</b> Operator length 200 ms Gap 32 ms Windows 200 1500 ms 200 3000 ms
<b>SOURCE</b> VAPORCHOC DEPTH 5.7 m CAPACITY 2 channel P/B 80 valves SP INTERVAL 1 large bubble configuration 25 m	<b>VELOCITY ANALYSIS</b> NEED CORRECTIONS Linear interpolation between velocity functions
<b>STREAMER</b> LENGTH 2400 m DEPTH 14 m GROUPS 88 GROUP INTERVAL 25 m GEOPHONES HC 202 24 TRACE	<b>STACK 4800 %</b> AUTO ADAPTED PREDICTIVE DECONVOLUTION (FRITZ) Operator length 140 ms Gap 24 ms Windows 200 1500 ms 200 3000 ms
	<b>STATIC CORRECTION</b> - 13 ms <b>TIME VARIANT FILTER</b> <b>TRACE EQUALIZATION</b> <b>ANALOG DISPLAY</b> (Reversed polarity)
<b>POLARITY</b> Geophone compression negative number on field tape Wave through an elastic positive reflection coefficient	<b>TIME ORIGIN SEA LEVEL</b> Source and streamer static correction - 13 ms
<b>HORIZONTAL SCALE</b> 0.5 km	<b>HORIZONTAL SCALE</b> 0.5 km

COMPAGNIE GENERALE DE GEOPHYSIQUE  
 8, Rue Gabriel-PERRI, NANTES - FRANCE



Part 127.11.59 **ELF**  
**ALL. 3**  
 SICILY  
 AREA C. R 78. LF  
 NW 330 LINE CR78.102 1 SE  
 BOAT MOTION ←

PL N° 41 STACK 4800%.DBAS.TVF APR 10 81

FIELD RECORDING 4800 % Contractor C.G.G.	DIGITAL PROCESSING P.5 Sequence in 4 ms
<b>SHIP</b> POLAR ROOM NAVIGATION BY 514203 SHOOTING DATE 01/10/80	<b>AMPLITUDE RECOVERY</b> VELOCITY DIVISION by Vapourchoc signal MULTIS
<b>INSTRUMENTS</b> SN 338 Floating point FORBAT 9 tracks 1600 BP FILTER 8175 SAMPLING 2 ms	<b>DECONVOLUTION PREDICTIVE</b> Operator length 200 ms Gap 32 ms Windows 200 1500 ms 200 3000 ms
<b>SOURCE</b> VAPORCHOC DEPTH 5.7 m CAPACITY 2 channel P/B 80 valves SP INTERVAL 1 large bubble configuration 25 m	<b>VELOCITY ANALYSIS</b> NEED CORRECTIONS Linear interpolation between velocity functions
<b>STREAMER</b> LENGTH 2400 m DEPTH 14 m GROUPS 88 GROUP INTERVAL 25 m GEOPHONES HC 202 24 TRACE	<b>STACK 4800 %</b> AUTO ADAPTED PREDICTIVE DECONVOLUTION (FRITZ) Operator length 140 ms Gap 24 ms Windows 200 1500 ms 200 3000 ms
	<b>STATIC CORRECTION</b> - 13 ms <b>TIME VARIANT FILTER</b> <b>TRACE EQUALIZATION</b> <b>ANALOG DISPLAY</b> (Reversed polarity)
<b>POLARITY</b> Geophone compression negative number on field tape Wave through an elastic positive reflection coefficient	<b>TIME ORIGIN SEA LEVEL</b> Source and streamer static correction - 13 ms
<b>HORIZONTAL SCALE</b> 0.5 km	<b>HORIZONTAL SCALE</b> 0.5 km

COMPAGNIE GENERALE DE GEOPHYSIQUE  
 8, Rue Gabriel-PERRI, NANTES - FRANCE

