

SEPLA ASSOCIATED LTD GEOPHYSICAL DATA PROCESSING LONDON ENGLAND	DATE PROCESSED: APRIL 78 REEL NUMBER: 0285 CONTRACT NUMBER: 402
-----------------------------------------------------------------------	-----------------------------------------------------------------------

**FIELD RECORDING**

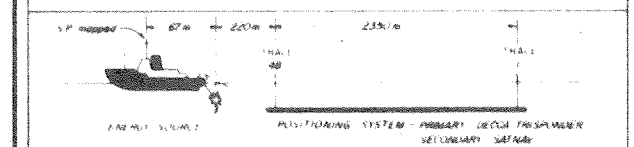
RECORDED BY: GEOPHYSICAL OFFSHORE EXPLORATION M.V. SOEL ESEDE  
 DATE: 20TH-28TH JAN 1978 SYSTEM: LRS 888 COBALT  
 FORMER: 888 S.P.E. GAIN: FLOATING POINT

**ENERGY SOURCE**

TYPE: AIR GUN ARRAY 2 x 8 GUNS 2438 LB. IN.  
 DEPTH: 2000 P.S.F. DEPTH: 49 FT.  
 STREAMER: 2400 M. NO TRACES: 48  
 LENGTH: 35 TO 45 M. GROUP INTERVAL: 50M  
 AREA: MALDENGE GEOPHYSICAL

**PARAMETERS**

RECORDING FOL: 4800% S.P. SPACING: 25M  
 SAMPLE INTERVAL: 2 MS. RECORD LENGTH: 3 SECONDS  
 RECORDING FILTER: 8 HZ. BANDWIDTH: 0.1-100 HZ. 100 DB



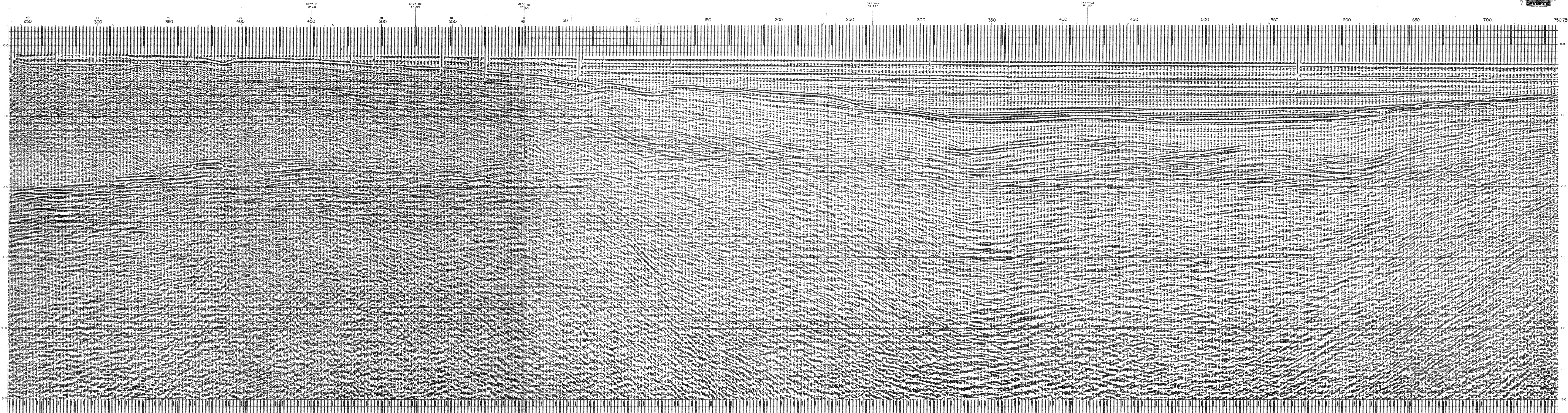
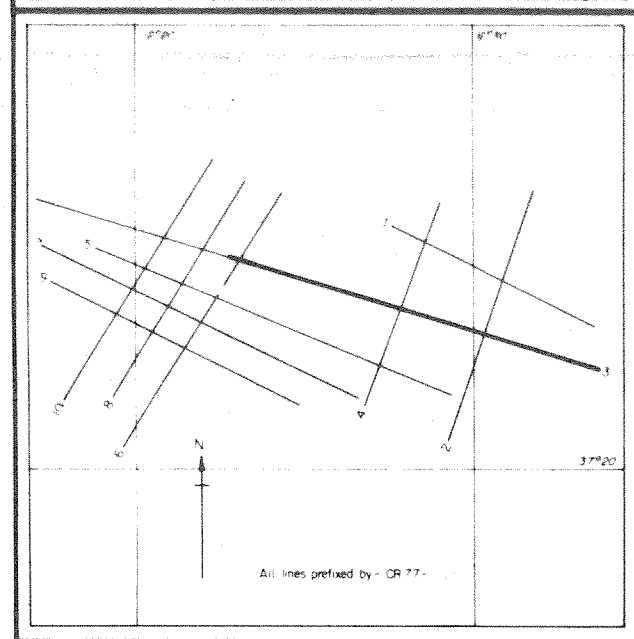
**DIGITAL PROCESSING**

SEQ	PROCESS	PARAMETERS
1	DEMULTIPLEX	WITH GAIN CURVE & RECOVERY GAIN CURVE IN ORDER IN WHICH THEY WERE ACQUIRED IN SE
2	EDIT SORT	WITH SUBSAMPLED FROM 2 TO 8MS WITH CONSTANT GAIN AND SEE BELOW
3	RESAMPLING	CONSTANT VELOCITY STACK
4	VELOCITY ANALYSIS	CONSTANT VELOCITY STACK
5	WIGWAG CORRECTION	
6	HORIZONTAL STACK	48 FIELD
7	RECONSTRUCTION	WITH CONSTANT SEALING
8	FILTER	THE GAINST SEE BELOW
9	AMPLIFICATION	0.5 EXAMINE WINDING
10	SCALE	SEE BELOW FOR PLOT SCALES

DECIM	W	PERIOD	REPLY	RESCALE	WINDING
1	200	20	10	10000	10000
2	300	30	10	10000	10000

FILTER	W	PERIOD	REPLY	RESCALE	WINDING
1	200	20	10	10000	10000
2	300	30	10	10000	10000

SAMPLE RATE: 4 ms. DATUM CORRECTION: 0  
 SCALES: Horizontal: 1:25000 Vertical: 5cm/MS  
 RECORDING POLARITY: COMPRESSION IN VE N° ON TAPE  
 PROCESSING POLARITY: POSITIVE N° gives black peak



SP 230	SP 231	SP 232	SP 233	SP 234	SP 235	SP 236	SP 237	SP 238	SP 239	SP 240	SP 241	SP 242	SP 243	SP 244	SP 245	SP 246	SP 247	SP 248	SP 249	SP 250
--------	--------	--------	--------	--------	--------	--------	--------	--------	--------	--------	--------	--------	--------	--------	--------	--------	--------	--------	--------	--------