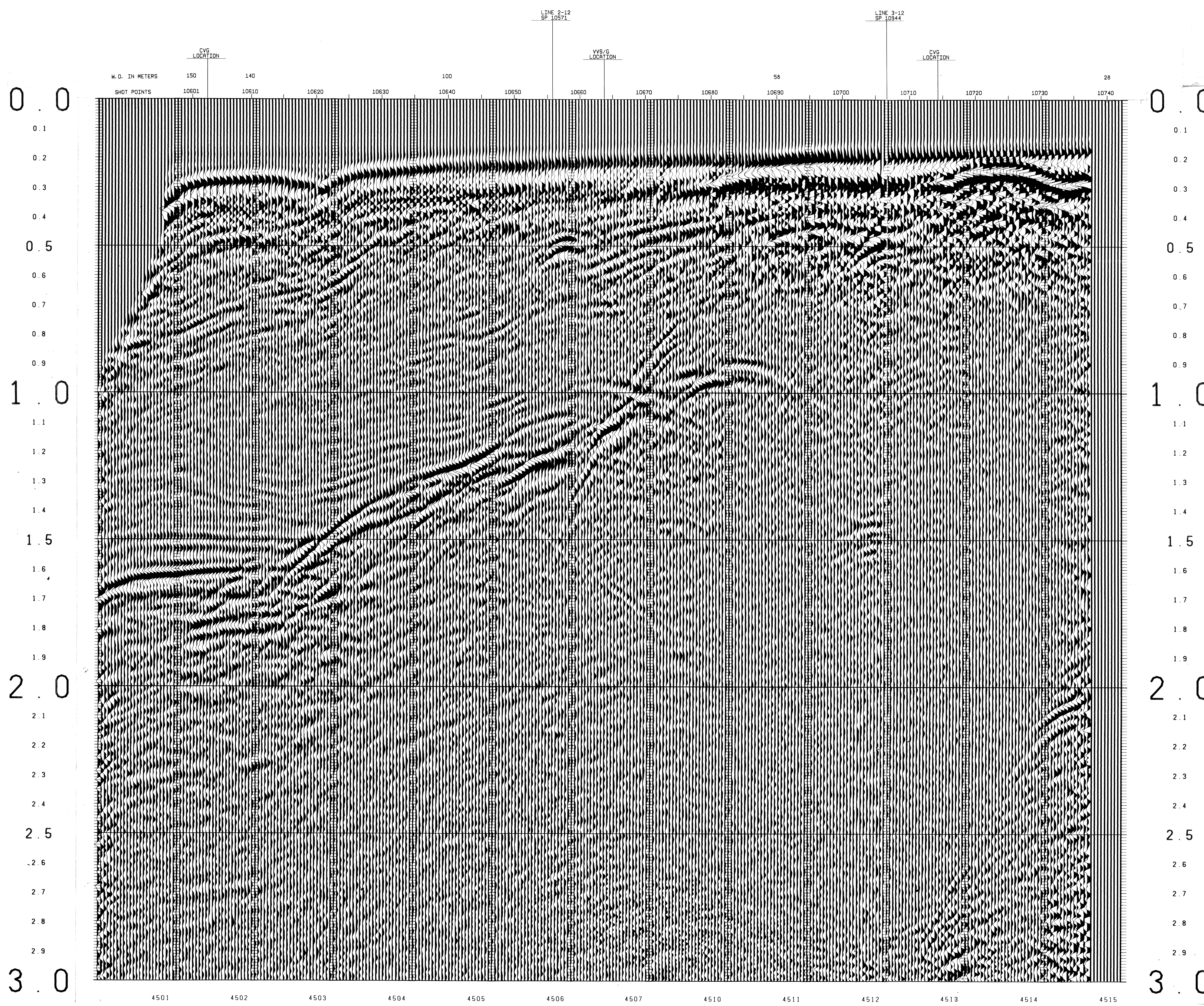


| SP-10603 | TIME (V-RMS) (V-INT) |
|----------|----------------------|
| 0 | 4850 4850 |
| 25 | 4850 5412 |
| 50 | 5250 5412 |
| 75 | 5250 5627 |
| 100 | 5750 5627 |
| 125 | 6100 7885 |
| 150 | 6300 7807 |
| 175 | 7400 11768 |
| 200 | 9300 13221 |
| 225 | 9300 14708 |
| 250 | 11200 14708 |

| SP-10664 | TIME (V-RMS) (V-INT) |
|----------|----------------------|
| 0 | 4850 4850 |
| 25 | 4850 5176 |
| 50 | 4850 5176 |
| 75 | 5050 5176 |
| 100 | 5050 5176 |
| 125 | 5900 5176 |
| 150 | 6300 5176 |
| 175 | 6300 5176 |
| 200 | 6300 5176 |
| 225 | 6300 5176 |
| 250 | 6300 5176 |

| SP-10740 | TIME (V-RMS) (V-INT) |
|----------|----------------------|
| 0 | 4850 4850 |
| 25 | 4850 4850 |
| 50 | 4850 4850 |
| 75 | 5400 5737 |
| 100 | 5400 5737 |
| 125 | 5400 5737 |
| 150 | 5400 5737 |
| 175 | 5400 5737 |
| 200 | 5400 5737 |
| 225 | 5400 5737 |
| 250 | 5400 5737 |



SEAGULL SICILY

LINE 12 SPS10601-10740

12 FOLD 24 TRACE

RECORDING DATA

SHOT BY S.S.L. PARTY 723 BOAT K/R TONDER APRIL 1974

INSTRUMENTS- DFS 3 NEARS AND FARs FORMAT CABLE- LENGTH 2400 METRES

RECORD LENGTH- 6 SECONDS, 4 MS SAMPLE RATE GROUPS 48

FIELD FILTERS- LOWCUT-8 HZ / SLOPE-18 DB/OCTAVE GEOPHONE ARRAY 30X1.5 M

ENERGY SOURCE- ESSO SEISPROBE ARRAY 4X2 GUNS DEPTH 10 METERS SEISMOMETER TYPE- MULTIDYNE ACC. CANCELLING

DEPTH 10 METERS GROUP INTERVAL 50 M

COVERAGE- 24 FOLD, 48 TRACE SHOT INTERVAL 50 M

TAPE FORMAT- 1/2 INCH 9 TRACK 800 BPI SEGA SURVEY- PRIMARY LORAN C

BOAT DIRECTION- DIRECTION OF INCREASING SHOTPOINTS SECONDARY SAT. NAV.

POLARITY- COMPRESSIONAL WAVE- POSITIVE NO. ON TAPE, BREAKS UP ON SECTION

S.P. Marked on section is centre of guns

PROCESSING DATA

TRUE AMPLITUDE RECOVERY AND SEISMIC EDIT

DECONVOLUTION BEFORE STACK-

NON-WHITENING GAPPED

1 FILTER PER TRACE, 196 MS IN LENGTH WITH A 28 MS GAP

DESIGN GATE- TRACE 1 ACCORDING TO WD, 1200-1300 MS TO MAX. TIME

TRACE 24 ACCORDING TO WD, 360-550 MS TO MAX. TIME

12 FOLD 24 TRACE COMMON DEPTH POINT GATHER UTILISING NEAR 24 GROUPS ONLY

VELOCITY ANALYSIS- CONSTANT VELOCITY GATHER AND VARIABLE VELOCITY STACK/GATHER

STATIC CORRECTION- FOR SHOT AND SEISMOMETER DEPTH 19MS

NORMAL MOVEOUT CORRECTION

FIRST BREAK SUPPRESSION- SEE TAPER-ON RECORD

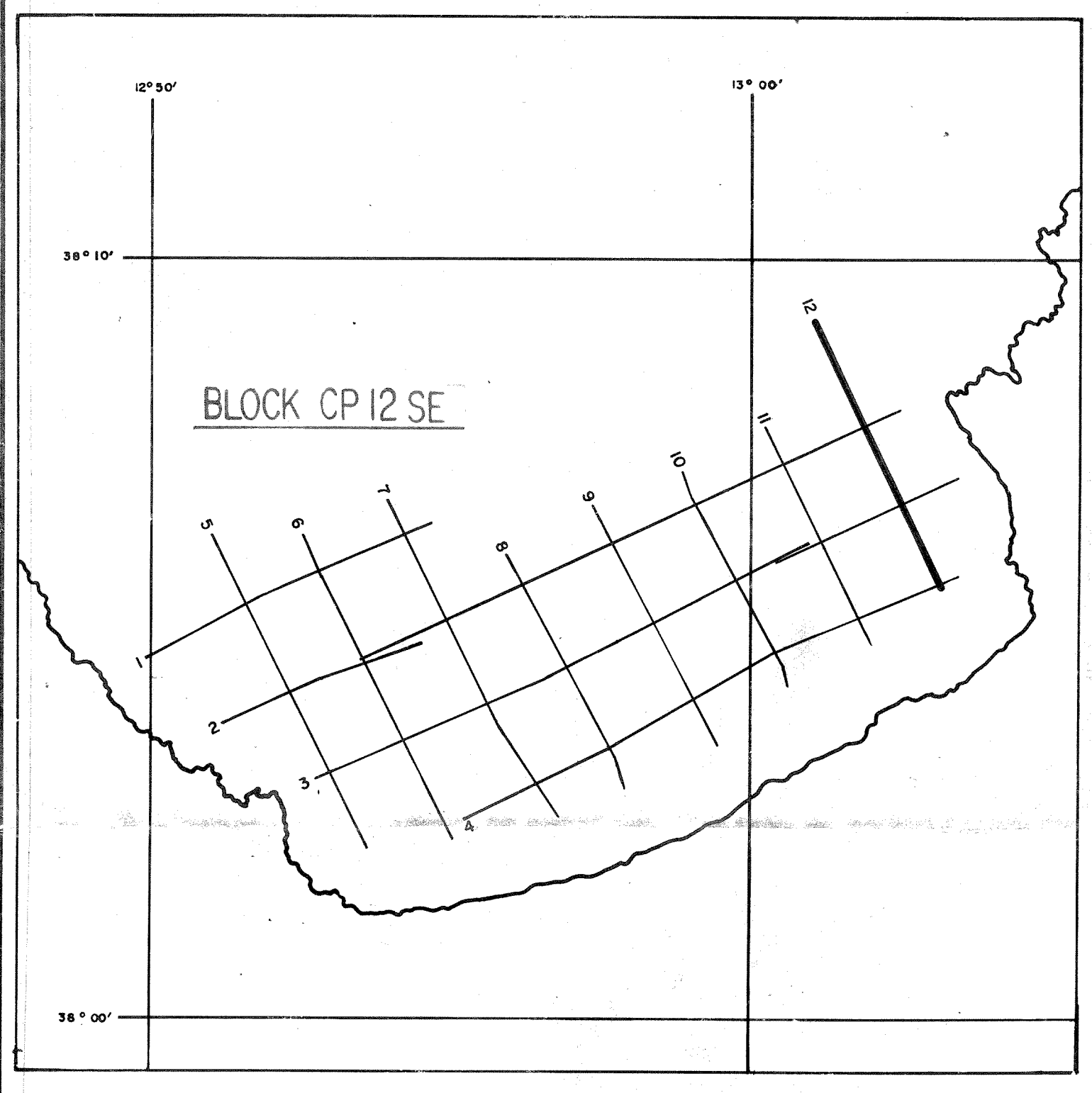
12 FOLD COMMON DEPTH POINT STACK

DECONVOLUTION AFTER STACK-

NON-WHITENING GAPPED

1 FILTER PER TRACE, 356 MS IN LENGTH WITH A 28 MS GAP

DESIGN GATE- 350 MS TO MAX. TIME



DATE PROCESSED- MAY/JUNE 1974

PARTY 722, GEOPHYSICAL SERVICE INTERNATIONAL LIMITED, CROYDON, U.K.