

SE

SEAGULL SICILY

LINE 11 SPS10970-11091



12 FOLD 24 TRACE

SP-10972

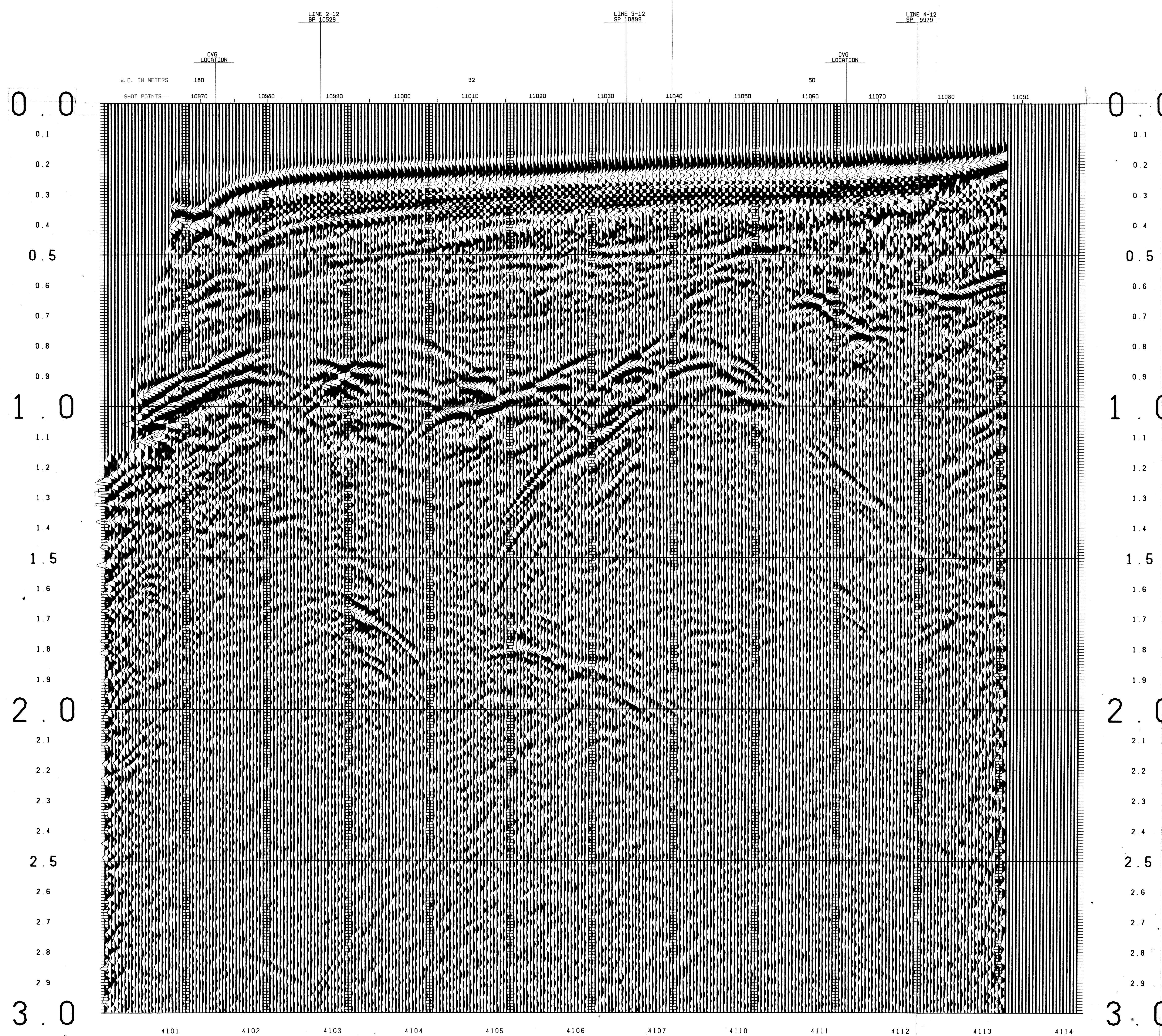
TIME IV-ONS	V-TXT
0	4850
300	4850
600	5100
900	5800
1200	6700
1500	7800
1800	9000
2100	10300
2400	11700
2700	13200
3000	14800

SP-11092

TIME IV-ONS	V-TXT
0	4850
275	4850
550	5200
825	6350
1100	8310
1375	10950
1650	14400
1925	18000
2200	21800
2475	25800
2750	30000

SP-11085

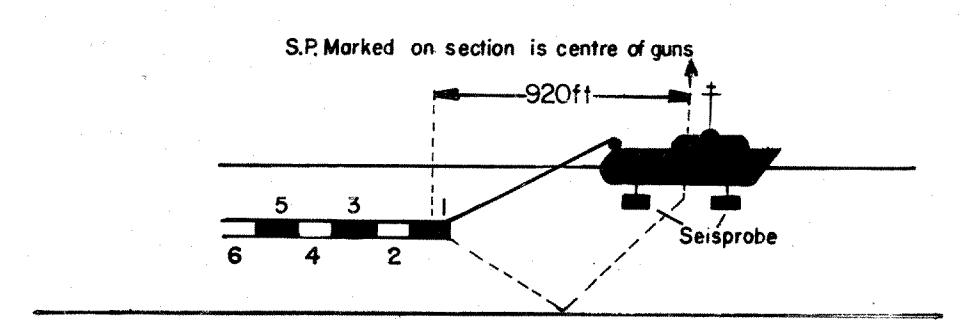
TIME IV-ONS	V-TXT
0	4850
125	4850
250	5300
375	6050
500	7100
625	8400
750	9900
875	11600
1000	13500
1125	15600
1250	17900
1375	20400
1500	23100
1625	26000
1750	29100
1875	32400
2000	35900
2125	39600
2250	43500
2375	47600
2500	51900
2625	56400
2750	61100
2875	66000
3000	71100



RECORDING DATA

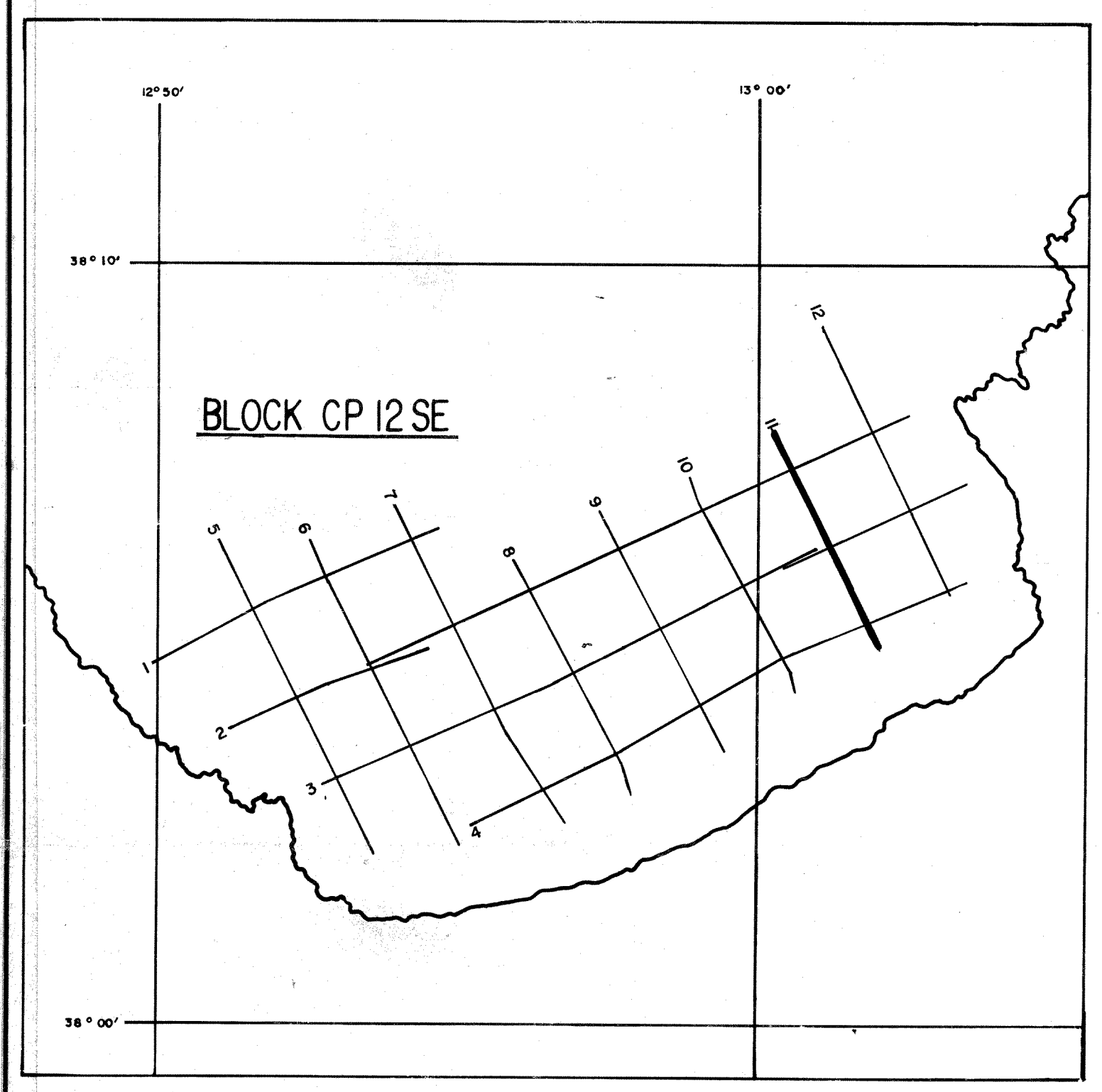


SHOT BY S.S.L. PARTY 723 BOAT K/R TONDER APRIL 1974
 INSTRUMENTS- DFS 3 NEARS AND FARS FORMAT CABLE- LENGTH 2400 METRES
 RECORD LENGTH- 6 SECONDS, 4 MS SAMPLE RATE GROUPS 48
 FIELD FILTERS- LOWCUT-8 HZ / SLOPE-18 DB/OCTAVE GEOPHONE ARRAY 30X1.5 M
 ENERGY SOURCE- ESSO SEISPROBE ARRAY 4X2 GUNS DEPTH 10 METERS
 DEPTH 10 METERS
 COVERAGE- 24 FOLD, 48 TRACE SURVEY- MULTIDYNE ACC. CANCELLING
 TAPE FORMAT- 1/2 INCH 9 TRACK 800 BPI SEGA DEPTH 10-20 METERS
 BOAT DIRECTION- DIRECTION OF INCREASING SHOTPOINTS SHOT INTERVAL 50 M
 POLARITY- COMPRESSIONAL WAVE-POSITIVE NO. ON TAPE, BREAKS UP ON SECTION SECONDARY LORAN C
 SURVEY- SECONDARY SAT. NAV.



PROCESSING DATA

TRUE AMPLITUDE RECOVERY AND SEISMIC EDIT
 DECONVOLUTION BEFORE STACK- NON-WHITENING GAPPED
 1 FILTER PER TRACE, 196 MS IN LENGTH WITH A 28 MS GAP
 DESIGN GATE- TRACE 1 ACCORDING TO WD, 1200-1300 MS TO MAX. TIME
 TRACE 24 ACCORDING TO WD, 360- 550 MS TO MAX. TIME
 12 FOLD 24 TRACE COMMON DEPTH POINT GATHER UTILISING NEAR 24 GROUPS ONLY
 VELOCITY ANALYSIS- CONSTANT VELOCITY GATHER AND VARIABLE VELOCITY STACK/GATHER
 STATIC CORRECTION- FOR SHOT AND SEISMOMETER DEPTH 19MS
 NORMAL MOVEOUT CORRECTION
 FIRST BREAK SUPPRESSION- SEE TAPER-ON RECORD
 12 FOLD COMMON DEPTH POINT STACK
 DECONVOLUTION AFTER STACK- NON-WHITENING GAPPED
 1 FILTER PER TRACE, 356 MS IN LENGTH WITH A 28 MS GAP
 DESIGN GATE- 350 MS TO MAX. TIME



DATE PROCESSED- MAY/JUNE 1974

PARTY 722, GEOPHYSICAL SERVICE INTERNATIONAL LIMITED, CROYDON, U.K.