

# SEAGULL SICILY

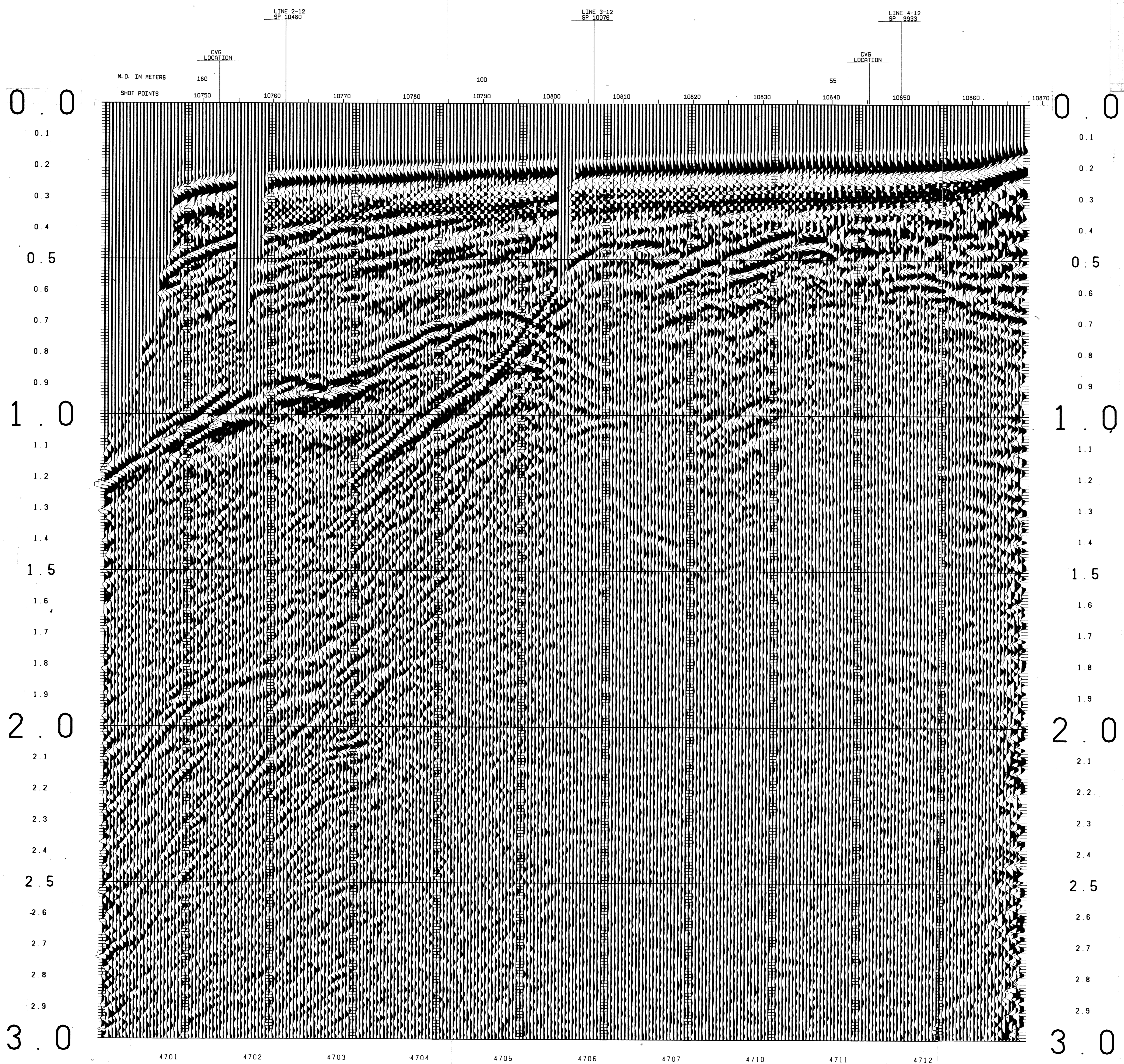
## LINE 10 SPS10750-10870



12 FOLD 24 TRACE

SP-10753	TIME	V-RMS	V-INT
0	4850	4850	
220	4850	5296	
460	5050	5261	
600	5100	5308	
660	5400	7789	
700	5100	8304	
950	6750	10022	
1400	7950	10022	
3000	11500	13267	

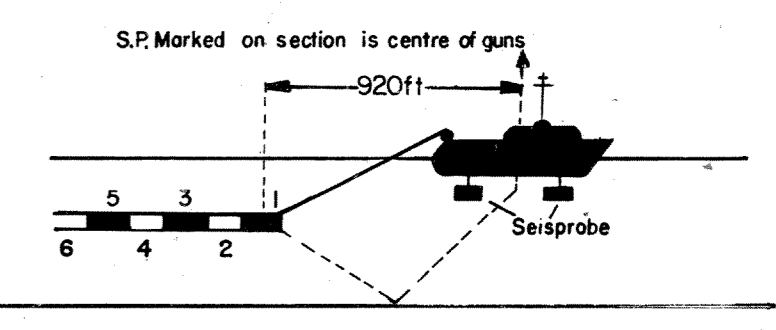
SP-10850	TIME	V-RMS	V-INT
0	4850	4850	
150	4850	5453	
280	5100	5636	
370	5280	7544	
420	5100	8162	
505	6050	8897	
750	7050	9741	
1280	8250	9741	
3000	11400	13267	



### RECORDING DATA

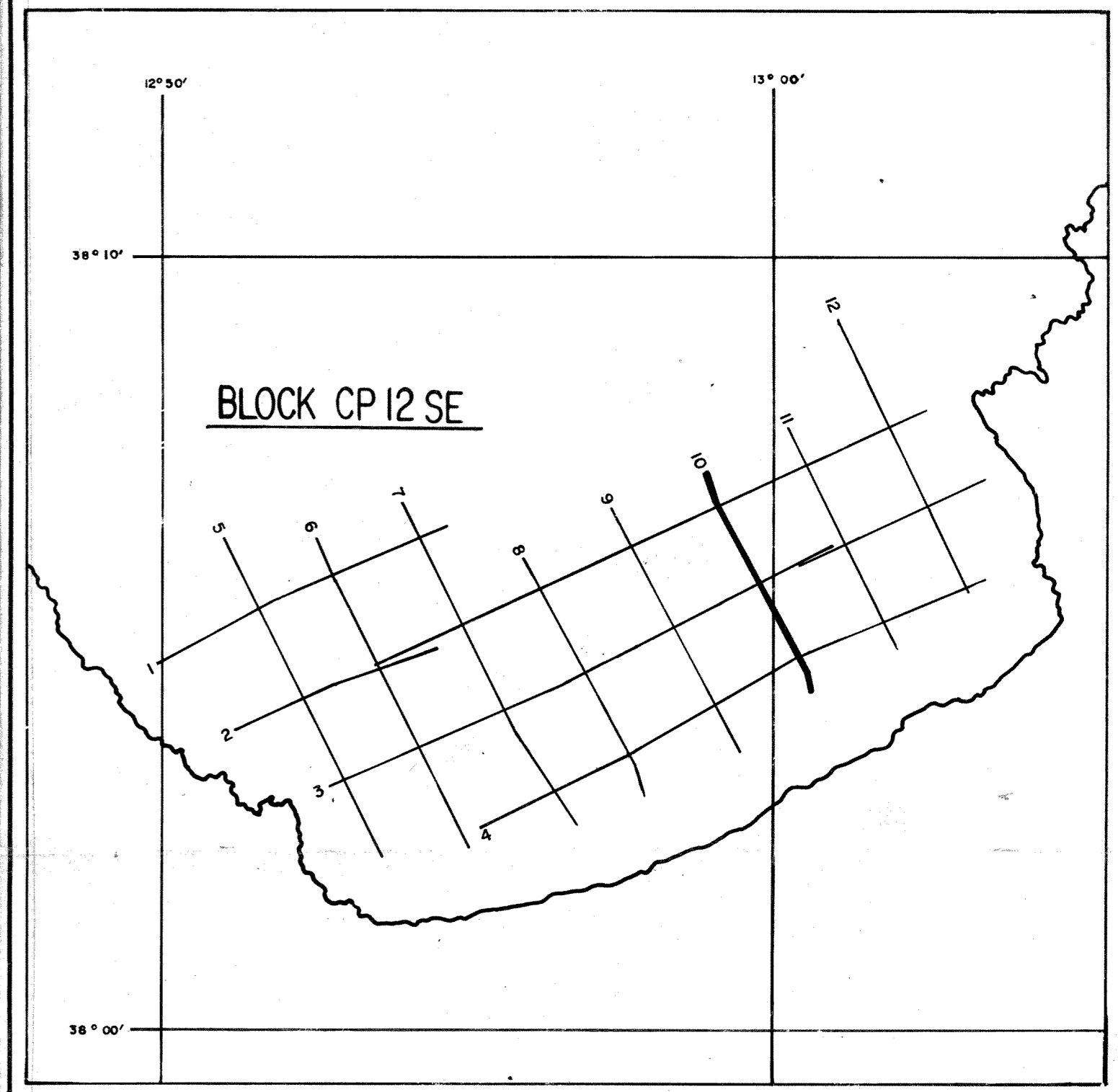


SHOT BY S. S. L. PARTY 723 BOAT K/R TONDER APRIL 1974  
 INSTRUMENTS- DFS 3 NEARS AND FARMS FORMAT CABLE- LENGTH 2400 METRES  
 RECORD LENGTH- 6 SECONDS, 4 MS SAMPLE RATE GROUPS 48  
 FIELD FILTERS- LOWCUT-8 HZ / SLOPE-18 DB/OCTAVE GEOPHONE ARRAY 30X1.5 M  
 HIGHCUT-62 HZ / SLOPE- 72 DB/OCTAVE SEISMOMETER TYPE-  
 ENERGY SOURCE- ESSO SEISPROBE MULTIDYNE ACC. CANCELLING  
 ARRAY 4X2 GUNS DEPTH 10-20 METERS  
 DEPTH 10 METERS GROUP INTERVAL 50 M  
 COVERAGE- 24 FOLD, 48 TRACE SHOT INTERVAL 50 M  
 TAPE FORMAT- 1/2 INCH 9 TRACK 800 BPI SEGA SURVEY- PRIMARY LORAN C  
 BOAT DIRECTION- DIRECTION OF INCREASING SHOTPOINTS SECONDARY SAT. NAV.  
 POLARITY- COMPRESSIONAL WAVE- POSITIVE NO. ON TAPE, BREAKS UP ON SECTION



### PROCESSING DATA

TRUE AMPLITUDE RECOVERY AND SEISMIC EDIT  
 DECONVOLUTION BEFORE STACK-  
 NON-WHITENING GAPPED  
 1 FILTER PER TRACE, 196 MS IN LENGTH WITH A 28 MS GAP  
 DESIGN GATE- TRACE 1 ACCORDING TO WD, 1200-1300 MS TO MAX. TIME  
 TRACE 24 ACCORDING TO WD, 360- 550 MS TO MAX. TIME  
 12 FOLD 24 TRACE COMMON DEPTH POINT GATHER UTILISING NEAR 24 GROUPS ONLY  
 VELOCITY ANALYSIS- CONSTANT VELOCITY GATHER AND VARIABLE VELOCITY STACK/GATHER  
 STATIC CORRECTION- FOR SHOT AND SEISMOMETER DEPTH 19MS  
 NORMAL MOVEOUT CORRECTION  
 FIRST BREAK SUPPRESSION- SEE TAPER-ON RECORD  
 12 FOLD COMMON DEPTH POINT STACK  
 DECONVOLUTION AFTER STACK-  
 NON-WHITENING GAPPED  
 1 FILTER PER TRACE, 356 MS IN LENGTH WITH A 28 MS GAP  
 DESIGN GATE- 350 MS TO MAX. TIME



DATE PROCESSED- MAY/JUNE 1974  
 PARTY 722, GEOPHYSICAL SERVICE INTERNATIONAL LIMITED, CROYDON, U.K.