

SEAGULL SICILY

LINE 9 SPS 11100 - 11230



12 FOLD 24 TRACE

SP-11100

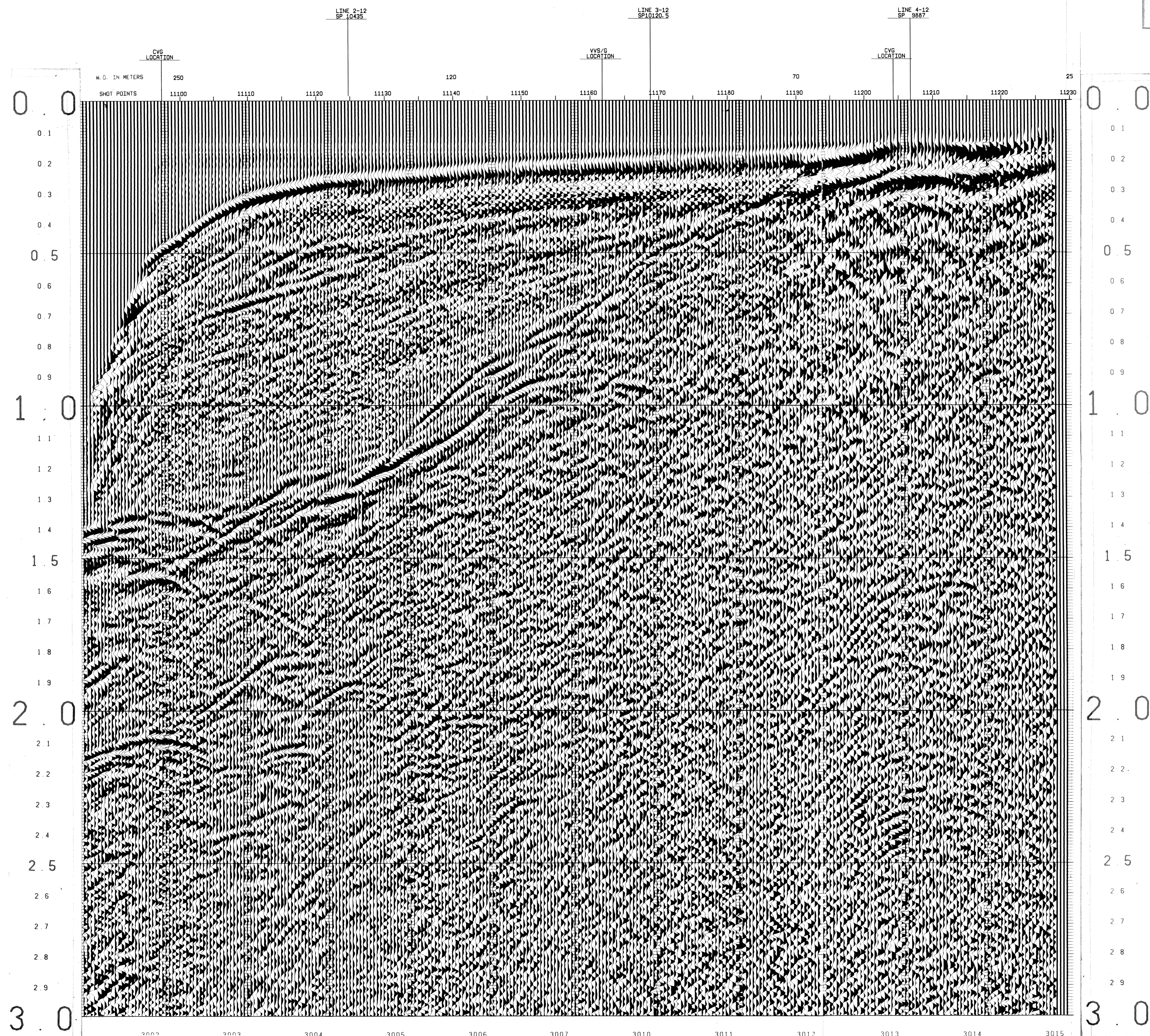
TIME	V-RMS	V-INT
0	4850	4850
275	4850	4850
550	5250	5250
825	5650	5650
1100	6050	6050
1375	6450	6450
1650	6850	6850
1925	7250	7250
2200	7650	7650
2475	8050	8050
2750	8450	8450
3000	8850	8850

SP-11161

TIME	V-RMS	V-INT
0	4850	4850
250	4850	4850
485	5350	5350
750	5850	5850
1025	6350	6350
1300	6850	6850
1575	7350	7350
1850	7850	7850
2125	8350	8350
2400	8850	8850
2675	9350	9350
2950	9850	9850
3000	10350	10350

SP-11205

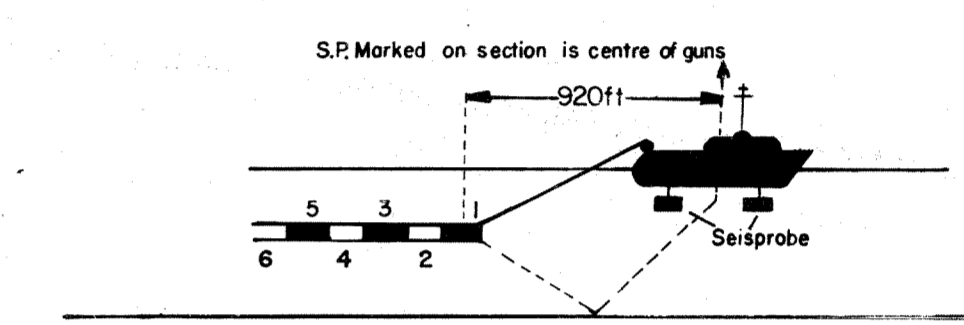
TIME	V-RMS	V-INT
0	4850	4850
150	4850	4850
300	5415	5415
450	5980	5980
600	6545	6545
750	7110	7110
900	7675	7675
1050	8240	8240
1200	8805	8805
1350	9370	9370
1500	9935	9935
1650	10500	10500
1800	11065	11065
1950	11630	11630
2100	12195	12195
2250	12760	12760
2400	13325	13325
2550	13890	13890
2700	14455	14455
2850	15020	15020
3000	15585	15585



RECORDING DATA

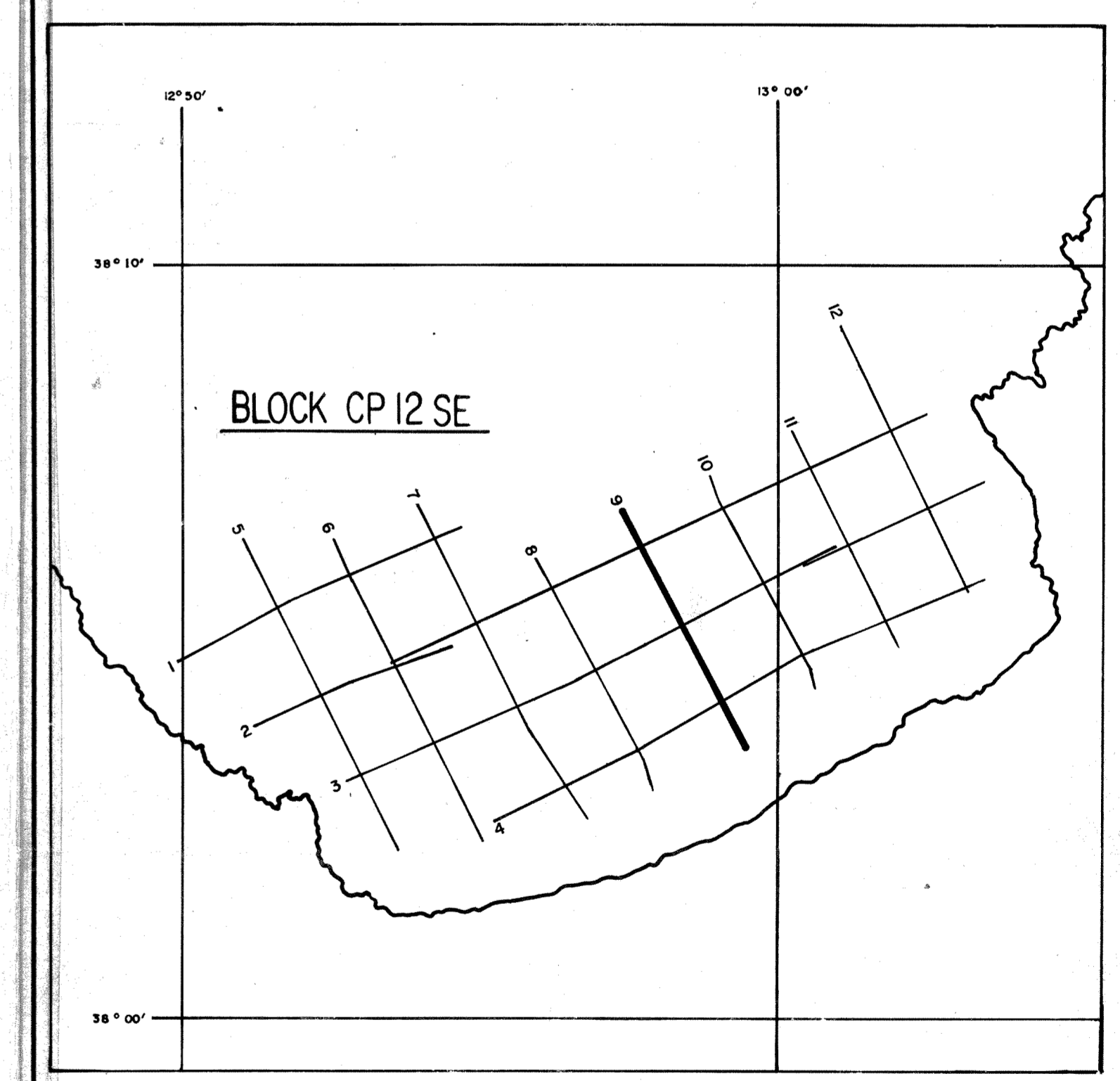


SHOT BY S. S. L. PARTY 723 BOAT K/R TONDER APRIL 1974
 INSTRUMENTS- DFS 3 NEARS AND FARS FORMAT CABLE- LENGTH 2400 METRES
 RECORD LENGTH- 6 SECONDS, 4 MS SAMPLE RATE GROUPS 48
 FIELD FILTERS- LOWCUT-8 HZ / SLOPE-18 DB/OCTAVE GEOPHONE ARRAY 30X1.5 M
 ENERGY SOURCE- ESSO SEISPROBE DEPTH 10 METERS SEISMOMETER TYPE-
 ARRAY 4X2 GUNS MULTIDYNE ACC. CANCELLING
 DEPTH 10 METERS GROUP INTERVAL 50 M
 COVERAGE- 24 FOLD, 48 TRACE SURVEY- PRIMARY LORAN C
 TAPE FORMAT- 1/2 INCH 9 TRACK 800 BPI SEGA SECONDARY SAT. NAV.
 BOAT DIRECTION- DIRECTION OF INCREASING SHOTPOINTS
 POLARITY- COMPRESSIONAL WAVE- POSITIVE NO. ON TAPE, BREAKS UP ON SECTION



PROCESSING DATA

TRUE AMPLITUDE RECOVERY AND SEISMIC EDIT
 DECONVOLUTION BEFORE STACK-
 NON-WHITENING GAPPED
 1 FILTER PER TRACE, 196 MS IN LENGTH WITH A 28 MS GAP
 DESIGN GATE- TRACE 1 ACCORDING TO WD, 1200-1300 MS TO MAX. TIME
 TRACE 24 ACCORDING TO WD, 360- 550 MS TO MAX. TIME
 12 FOLD 24 TRACE COMMON DEPTH POINT GATHER UTILISING NEAR 24 GROUPS ONLY
 VELOCITY ANALYSIS- CONSTANT VELOCITY GATHER AND VARIABLE VELOCITY STACK/GATHER
 STATIC CORRECTION- FOR SHOT AND SEISMOMETER DEPTH 20 MS
 NORMAL MOVEOUT CORRECTION
 FIRST BREAK SUPPRESSION- SEE TAPER-ON RECORD
 12 FOLD COMMON DEPTH POINT STACK
 DECONVOLUTION AFTER STACK-
 NON-WHITENING GAPPED
 1 FILTER PER TRACE, 356 MS IN LENGTH WITH A 28 MS GAP
 DESIGN GATE- 350 MS TO MAX. TIME



DATE PROCESSED-

MAY/JUNE 1974

PARTY 722, GEOPHYSICAL SERVICE INTERNATIONAL LIMITED, CROYDON, U.K.