

C. L. E. I. M. SEAGULL S. P. A.  
 BLOCK CP12SE  
 LINE 8 SPS 11910 TO 12040

HORIZONTAL SCALE 0 1/4 1/2 1 2 Kilometres  
 0 1/4 1/2 1 Miles

SE

# SEAGULL SICILY

## LINE 8 SPS 11910 -12040



### 12 FOLD 24 TRACE

SP-11912

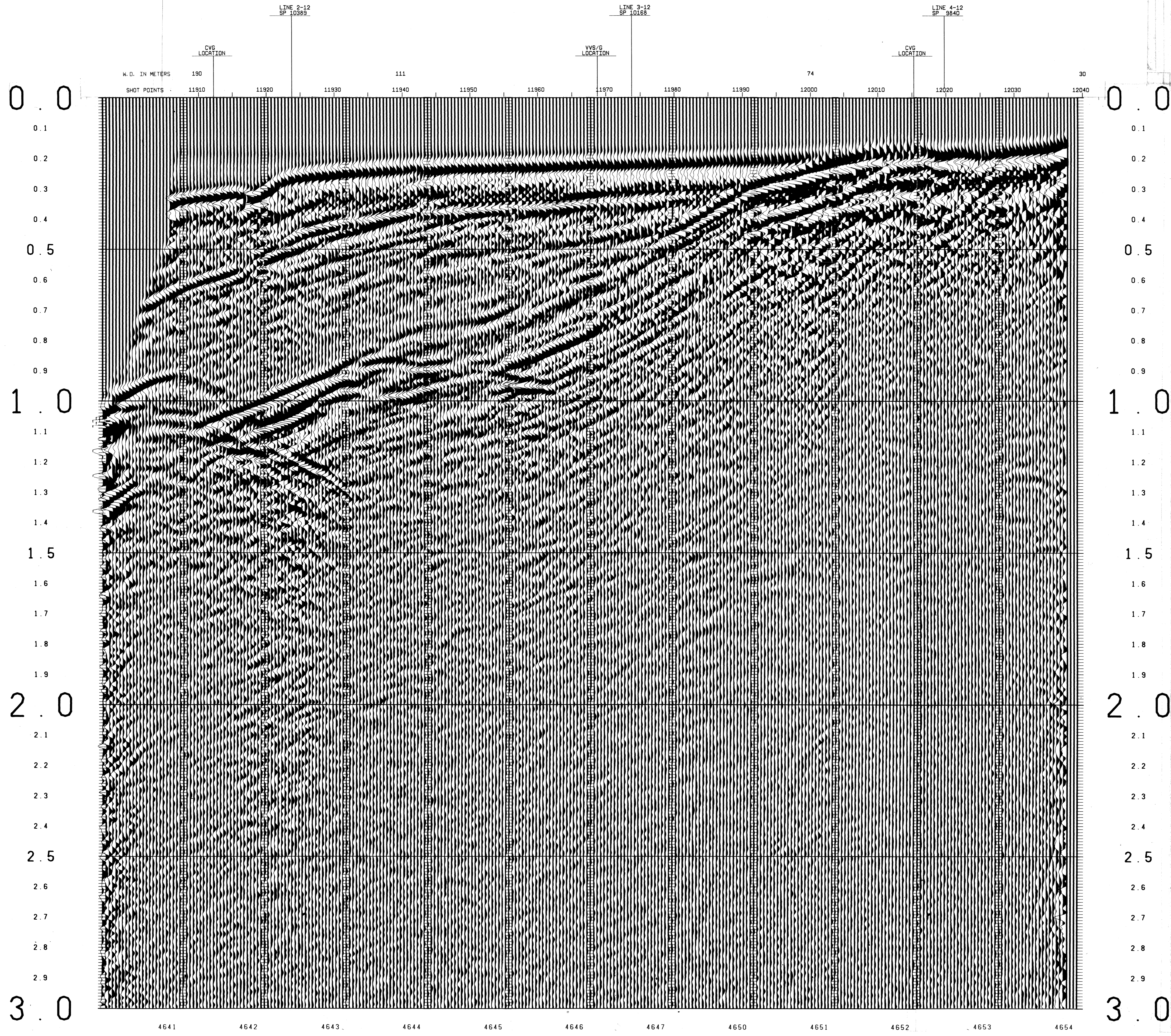
TIME (S)	W. IN METERS	V. IN METERS
0	4850	4850
350	4850	5087
600	4850	5280
1000	6030	7398
1070	6160	7788
1200	6700	10102
1300	7500	9815
1540	7500	13759
3000	11000	

SP-11969

TIME (S)	W. IN METERS	V. IN METERS
0	4850	4850
300	4850	5122
650	5000	2282
730	6050	8564
780	6250	8564
960	6700	8375
1500	8600	11522
3000	11500	13677

SP-12020

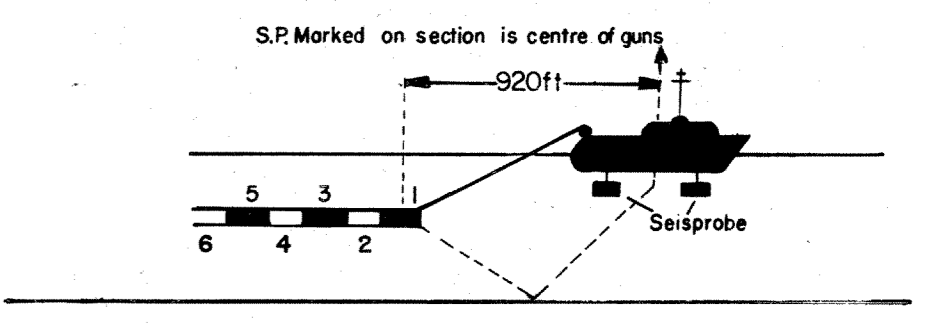
TIME (S)	W. IN METERS	V. IN METERS
0	4850	4850
150	4850	5146
300	5000	7580
450	6100	8298
750	7000	8166
1300	8550	10313
3000	11400	13165



### RECORDING DATA

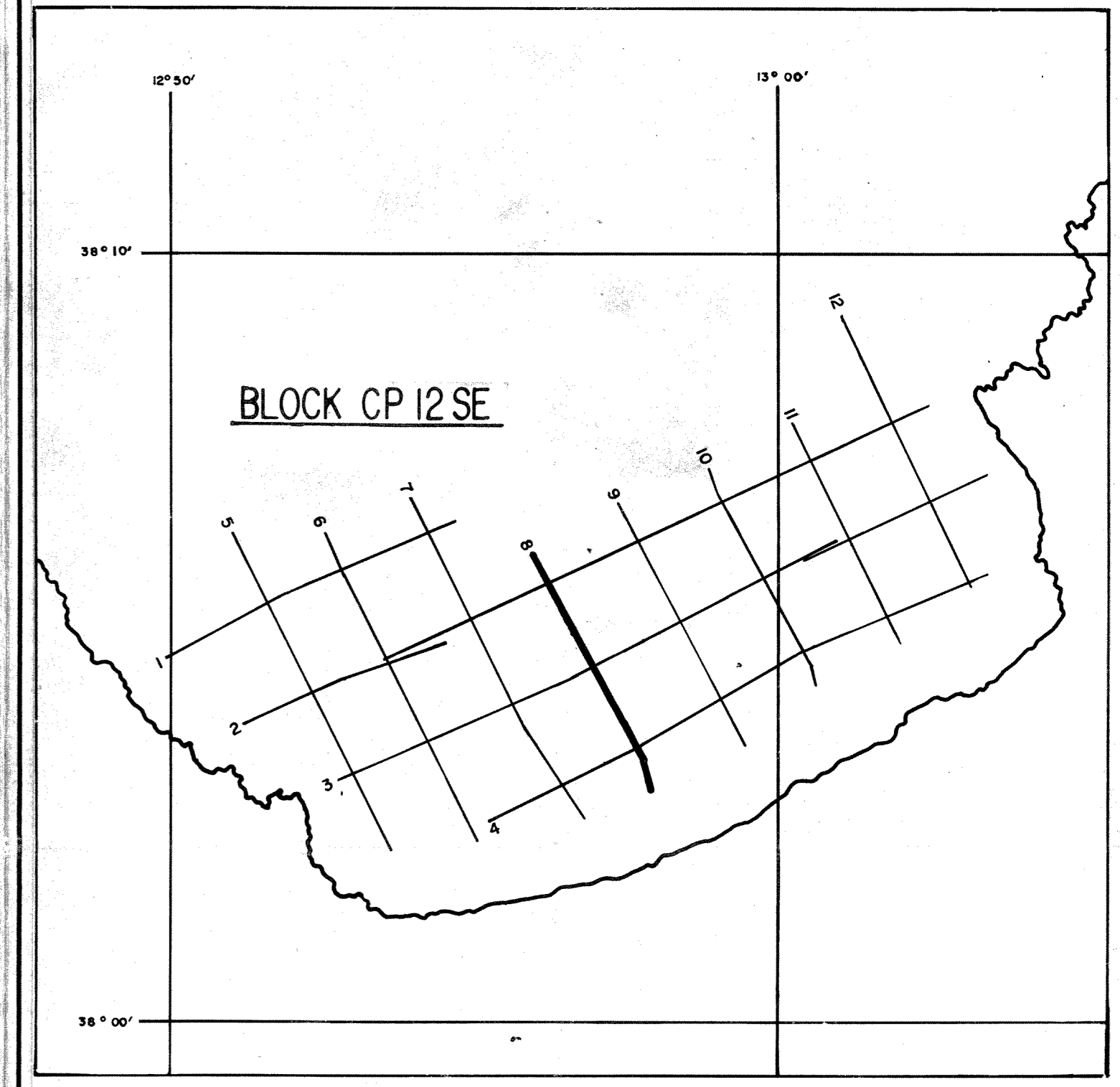
SHOT BY S.S.L. PARTY 723 BOAT K/R TONDER APRIL 1974  
 INSTRUMENTS- DFS 3 NEARS AND FARS FORMAT  
 RECORD LENGTH- 6 SECONDS, 4 MS SAMPLE RATE  
 FIELD FILTERS- LOWCUT-8 HZ / SLOPE-1.8 DB/OCTAVE  
 HIGHCUT-62 HZ / SLOPE-1.8 DB/OCTAVE  
 ENERGY SOURCE- ESSO SEISPROBE  
 ARRAY 4X2 GUNS  
 DEPTH 10 METERS  
 COVERAGE- 24 FOLD, 48 TRACE  
 TAPE FORMAT- 1/2 INCH 9 TRACK 800 BPI SEGA  
 BOAT DIRECTION- DIRECTION OF INCREASING SHOTPOINTS  
 POLARITY- COMPRESSONAL WAVE- POSITIVE NO. ON TAPE, BREAKS UP ON SECTION

CABLE- LENGTH 2400 METRES  
 GROUPS 48  
 SEISMOLOGER TYPE- GEOPHYSICAL SERVICE INTERNATIONAL  
 MULTIDYNE ACC. CANCELLING  
 DEPTH 10-20 METERS  
 GROUP INTERVAL 50 M  
 SHOT INTERVAL 50 M  
 SURVEY- PRIMARY LORAN C  
 SECONDARY SAT. NAV.



### PROCESSING DATA

TRUE AMPLITUDE RECOVERY AND SEISMIC EDIT  
 DECONVOLUTION BEFORE STACK-  
 NON-WHITENING GAPPED  
 1 FILTER PER TRACE, 196 MS IN LENGTH WITH A 28 MS GAP  
 DESIGN GATE- TRACE 1 ACCORDING TO NO. 1200-1300 MS TO MAX. TIME  
 TRACE 24 ACCORDING TO NO. 360-550 MS TO MAX. TIME  
 12 FOLD 24 TRACE COMMON DEPTH POINT GATHER UTILISING NEAR 24 GROUPS ONLY  
 VELOCITY ANALYSIS- CONSTANT VELOCITY GATHER AND VARIABLE VELOCITY STACK/GATHER  
 STATIC CORRECTION- FOR SHOT AND SEISMOLOGER DEPTH 18 MS  
 NORMAL MOVEOUT CORRECTION  
 FIRST BREAK SUPPRESSION- SEE TAPER-ON RECORD  
 12 FOLD COMMON DEPTH POINT STACK  
 DECONVOLUTION AFTER STACK-  
 NON-WHITENING GAPPED  
 1 FILTER PER TRACE, 356 MS IN LENGTH WITH A 28 MS GAP  
 DESIGN GATE- 350 MS TO MAX. TIME



DATE PROCESSED-

MAY/JUNE 1974

PARTY 722, GEOPHYSICAL SERVICE INTERNATIONAL LIMITED, CROYDON, U.K.