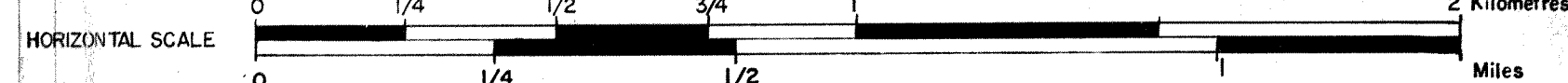


C. L. E. I. M. SEAGULL S. P. A.
 BLOCK CP12SE
 LINE 6 SPS 11503 TO 11610

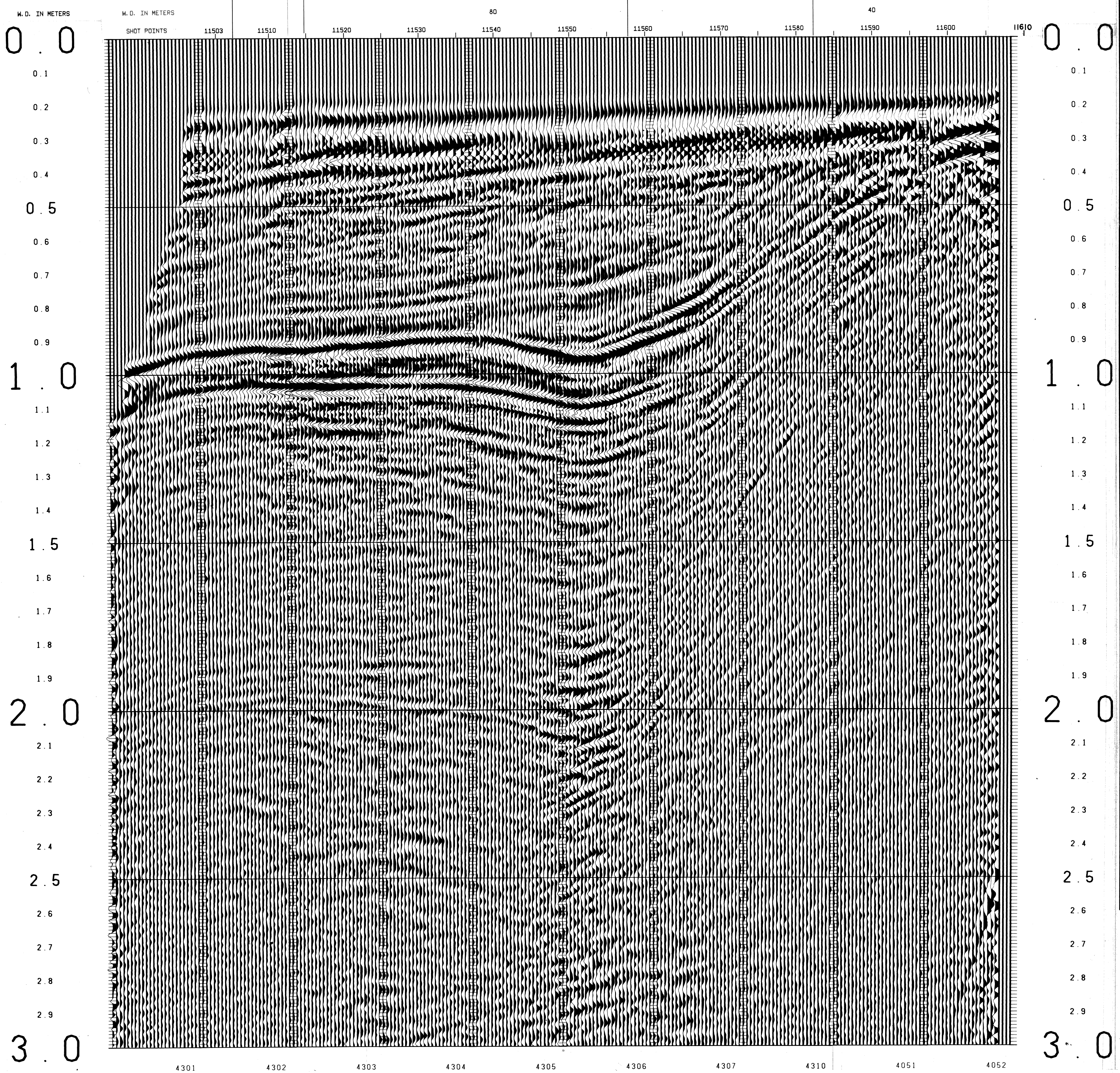


SP-11515	TIME (V-RMS)	V-TNT
0	4850	4850
200	4850	5146
400	5000	5891
700	5400	8856
770	5800	8763
860	6500	9389
1080	6825	15774
1150	7900	15774
3000	11400	13113

SP-11565	TIME (V-RMS)	V-TNT
0	4850	4850
200	4850	4944
425	4900	6413
600	5450	6597
850	5750	14898
900	6600	8387
1000	6800	12599
1100	7950	12568
3000	11100	

LINE 2-12
 SP 11646

LINE 3-12
 SP 10254



SEAGULL SICILY

LINE 6 SPS 11503 -11610

12 FOLD 24 TRACE

RECORDING DATA

SHOT BY S. S. L. PARTY 723 BOAT K/R TONDER APRIL 1974

INSTRUMENTS- DFS 3 NEARS AND FARS FORMAT CABLE- LENGTH 2400 METRES

RECORD LENGTH- 6 SECONDS, 4 MS SAMPLE RATE GROUPS 48

FIELD FILTERS- LOWCUT-8 HZ / SLOPE-18 DB/OCTAVE GEOPHONE ARRAY 30X1.5 M

ENERGY SOURCE- ESSO SEISPROBE ARRAY 4X2 GUNS DEPTH 10-20 METERS SEISMOMETER TYPE- MULTIDYNE ACC. CANCELLING

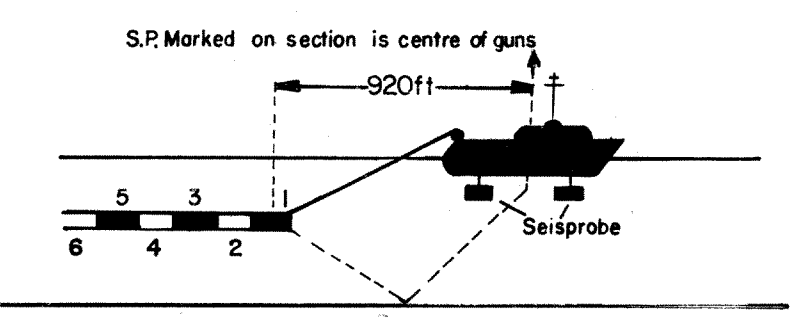
DEPTH 10 METERS GROUP INTERVAL 50 M

COVERAGE- 24 FOLD, 48 TRACE SHOT INTERVAL 50 M

TAPE FORMAT- 1/2 INCH 9 TRACK 800 BPI SEGA SURVEY- PRIMARY LORAN C

BOAT DIRECTION- DIRECTION OF INCREASING SHOTPOINTS SECONDARY SAT. NAV.

POLARITY- COMPRESSONAL WAVE-POSITIVE NO. ON TAPE, BREAKS UP ON SECTION



PROCESSING DATA

TRUE AMPLITUDE RECOVERY AND SEISMIC EDIT

DECONVOLUTION BEFORE STACK-

NON-WHITENING GAPPED

1 FILTER PER TRACE, 196 MS IN LENGTH WITH A 28 MS GAP

DESIGN GATE- TRACE 1 ACCORDING TO WD, 1200-1300 MS TO MAX. TIME

TRACE 24 ACCORDING TO WD, 360- 550 MS TO MAX. TIME

12 FOLD 24 TRACE COMMON DEPTH POINT GATHER UTILISING NEAR 24 GROUPS ONLY

VELOCITY ANALYSIS- CONSTANT VELOCITY GATHER AND VARIABLE VELOCITY STACK/GATHER

STATIC CORRECTION- FOR SHOT AND SEISMOMETER DEPTH 19MS

NORMAL MOVEOUT CORRECTION

FIRST BREAK SUPPRESSION- SEE TAPER-ON RECORD

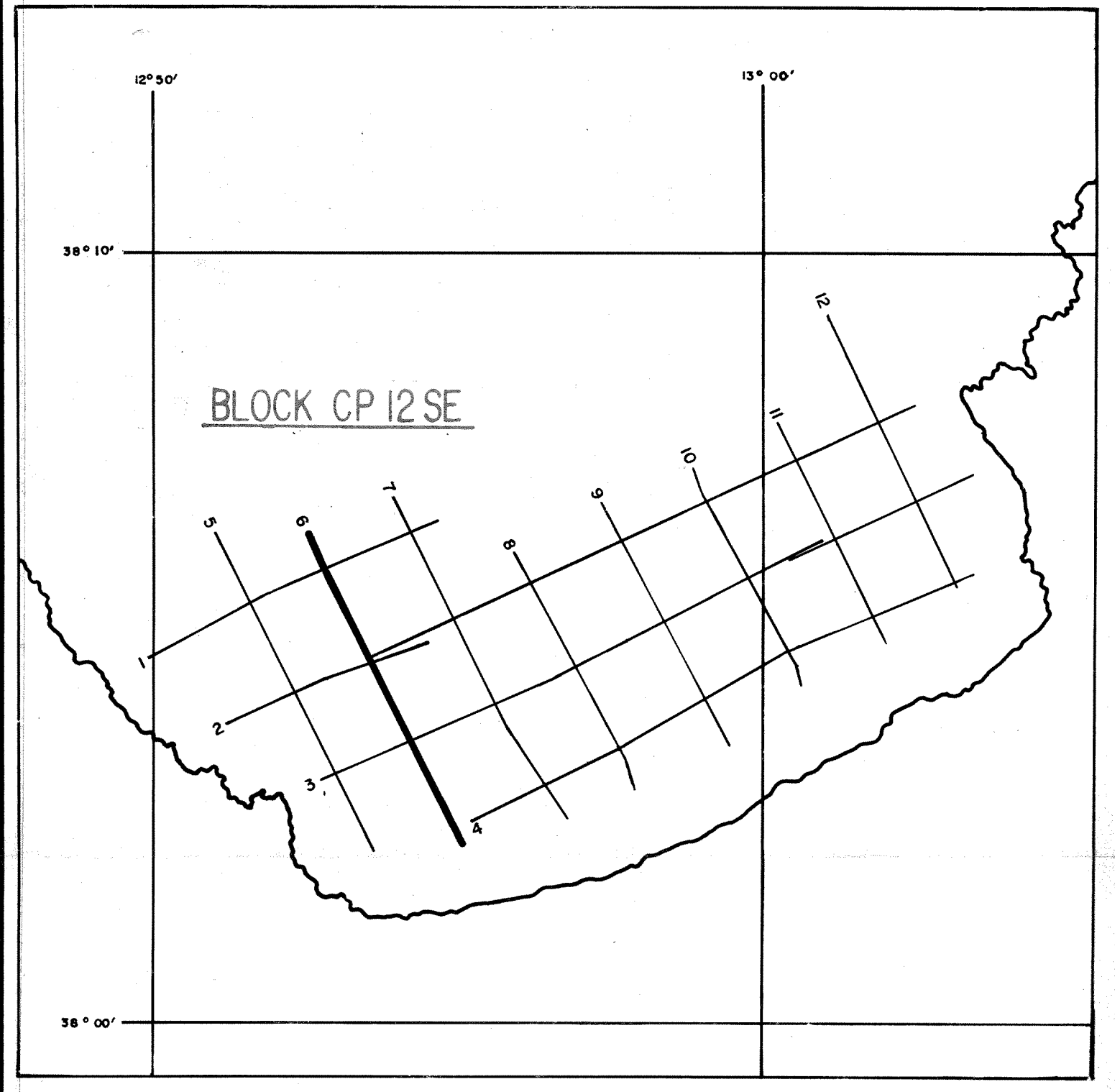
12 FOLD COMMON DEPTH POINT STACK

DECONVOLUTION AFTER STACK-

NON-WHITENING GAPPED

1 FILTER PER TRACE, 356 MS IN LENGTH WITH A 28 MS GAP

DESIGN GATE- 350 MS TO MAX. TIME



DATE PROCESSED- MAY/JUNE 1974

PARTY 722, GEOPHYSICAL SERVICE INTERNATIONAL LIMITED, CROYDON, U.K.