

# SEAGULL SICILY

## LINE 4 SPS 9760-10027

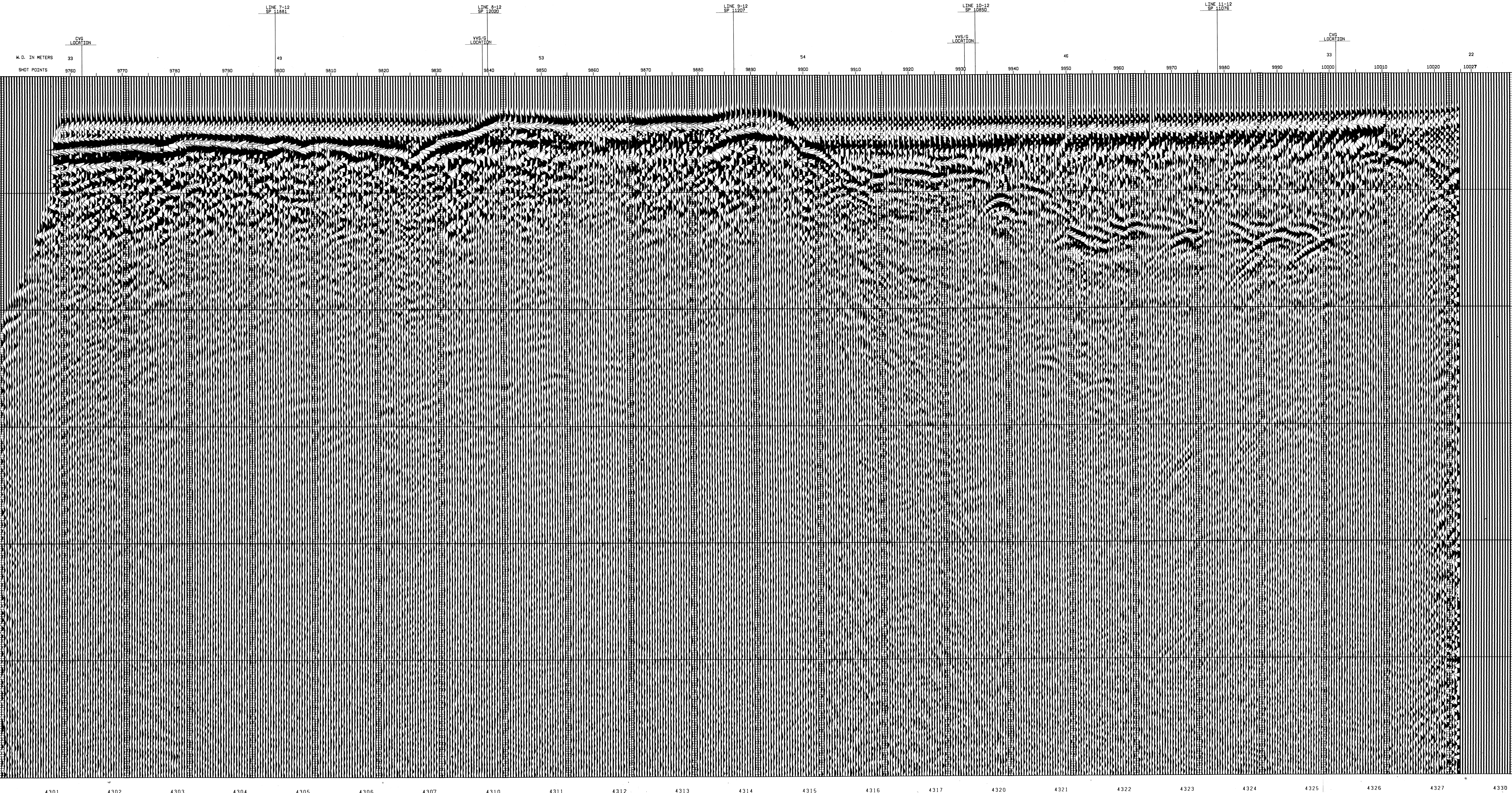
### 12 FOLD 24 TRACE

SP-9760	TIME	V-CH	V-CENT
150	4850	4850	
300	4900	4900	
450	4950	4950	
600	5000	5000	
750	5050	5050	
900	5100	5100	
1050	5150	5150	
1200	5200	5200	
1350	5250	5250	
1500	5300	5300	

SP-9830	TIME	V-CH	V-CENT
150	4850	4850	
300	4900	4900	
450	4950	4950	
600	5000	5000	
750	5050	5050	
900	5100	5100	
1050	5150	5150	
1200	5200	5200	
1350	5250	5250	
1500	5300	5300	

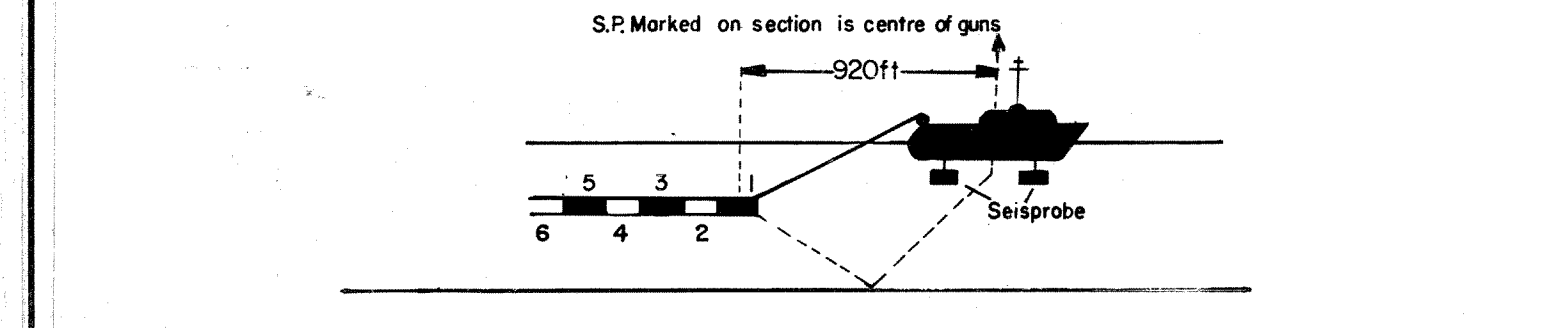
SP-9930	TIME	V-CH	V-CENT
150	4850	4850	
300	4900	4900	
450	4950	4950	
600	5000	5000	
750	5050	5050	
900	5100	5100	
1050	5150	5150	
1200	5200	5200	
1350	5250	5250	
1500	5300	5300	

SP-10000	TIME	V-CH	V-CENT
150	4850	4850	
300	4900	4900	
450	4950	4950	
600	5000	5000	
750	5050	5050	
900	5100	5100	
1050	5150	5150	
1200	5200	5200	
1350	5250	5250	
1500	5300	5300	



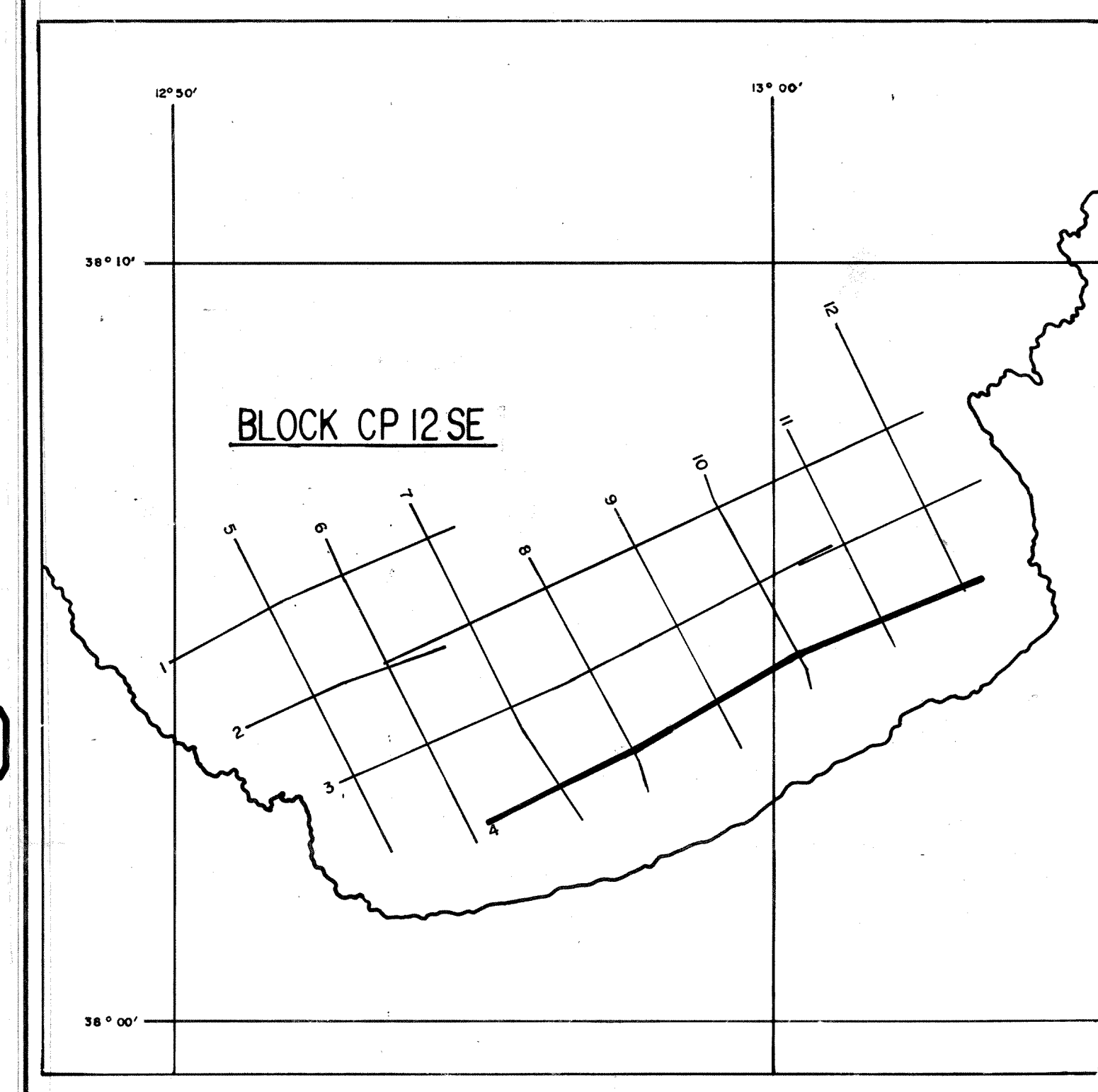
#### RECORDING DATA

SHOT BY S.S.L. PARTY 723 BOAT K/R TONDER APRIL 1974  
 INSTRUMENTS- DPS 3 NEARIS AND PARS FORMAT  
 RECORD LENGTH- 6 SECONDS, 4 MS SAMPLE RATE  
 FIELD FILTERS- LOWCUT-8 HZ / SLOPE-18 DB/OCTAVE  
 HIGHCUT-82 HZ / SLOPE-12 DB/OCTAVE  
 ENERGY SOURCE- ESSO SETSPROBE  
 ARRAY 4X2 GUNS  
 DEPTH 10 METERS  
 24 FOLD, 48 TRACE  
 1/2 INCH 9 TRACK 800 BPT SEGA  
 DIRECTION OF INCREASING SHOTPOINTS  
 COMPRESSORIAL WAVE- POSITIVE ND. ON TAPE, BREAKS UP ON SECTION



#### PROCESSING DATA

TRUE AMPLITUDE RECOVERY AND SEISMIC EDIT  
 DECONVOLUTION BEFORE STACK- NON-WHITENING GAPPED  
 1 FILTER PER TRACE, 196 MS IN LENGTH WITH A 28 MS GAP  
 DESIGN GATE- TRACE 1 ACCORDING TO ND, 1200-1300 MS TO MAX. TIME  
 TRACE 24 ACCORDING TO ND, 360-550 MS TO MAX. TIME  
 12 FOLD 24 TRACE COMMON DEPTH POINT GATHER UTILISING NEAR 24 GROUPS ONLY  
 VELOCITY ANALYSIS- CONSTANT VELOCITY GATHER AND VARIABLE VELOCITY STACK/GATHER  
 STATIC CORRECTION- FOR SHOT AND SEISMOMETER DEPTH (19MS)  
 NORMAL MOVEOUT CORRECTION- SEE TAPER-ON RECORD  
 FIRST BREAK SUPPRESSION- 12 FOLD COMMON DEPTH POINT STACK  
 DECONVOLUTION AFTER STACK- NON-WHITENING GAPPED  
 1 FILTER PER TRACE, 356 MS IN LENGTH WITH A 28 MS GAP  
 DESIGN GATE- 350 MS TO MAX. TIME



DATE PROCESSED- MAY/JUNE 1974  
 PARTY 722, GEOPHYSICAL SERVICE INTERNATIONAL LIMITED, CROFTON, U.K.