

SEAGULL SICILY

LINE 3 SPS10030-10300

12 FOLD 24 TRACE

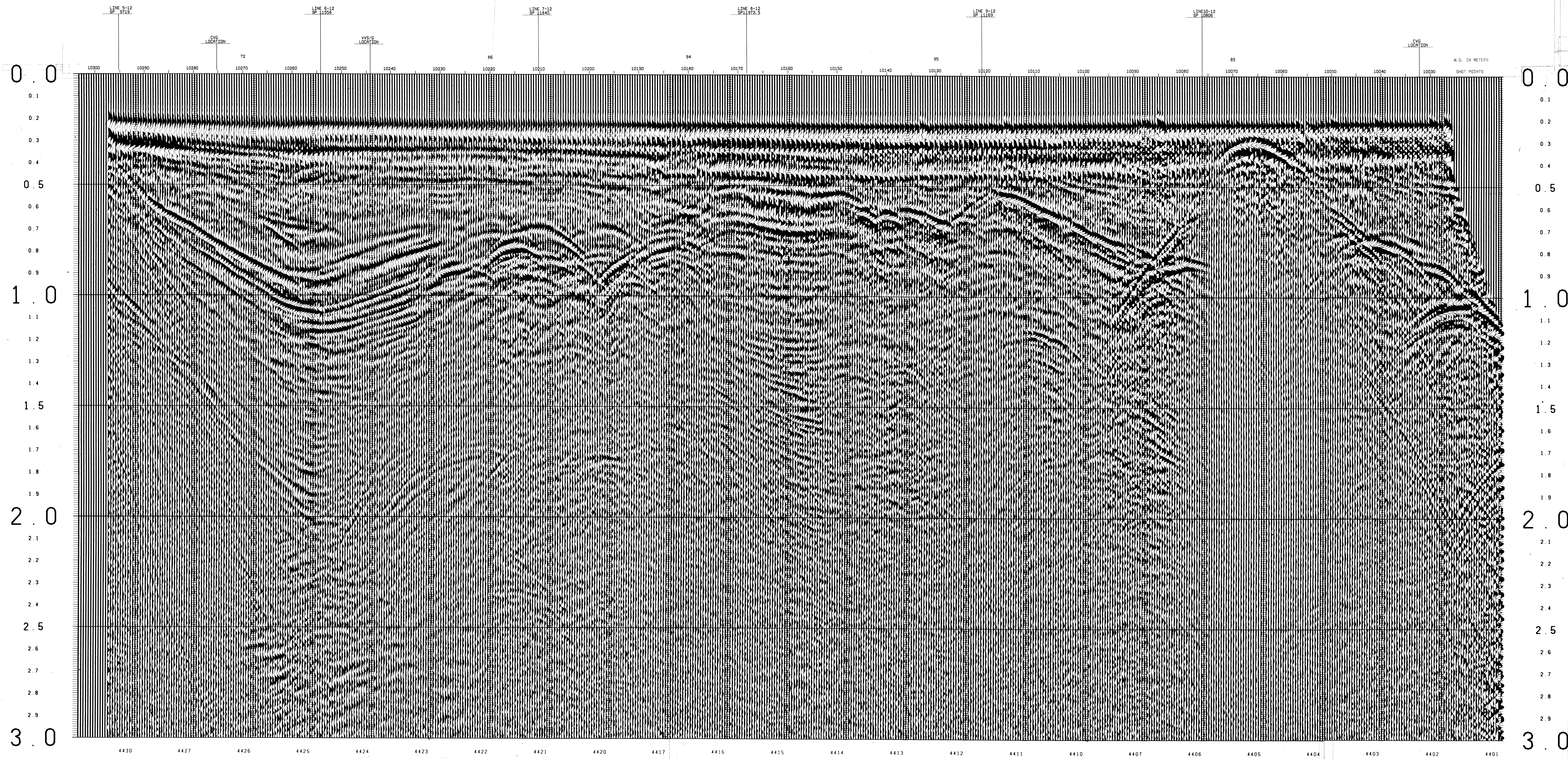
SP-10030	TIME (V-INT)	V-INT
150	4850	4850
450	5050	5071
650	5350	5371
850	5700	5700
950	5700	11686
850	5900	11784
3000	12000	15232

SP-10044	TIME (V-INT)	V-INT
250	4850	4850
450	5050	5071
650	5350	5371
850	5700	5700
950	5700	11724
1300	10050	13337
3000	11500	15319

SP-10100	TIME (V-INT)	V-INT
300	4850	4850
450	5050	5071
740	6250	6377
850	6750	6858
1500	8500	11561
2300	10050	12638
3000	11500	14771

SP-10120	TIME (V-INT)	V-INT
250	4850	4850
470	5350	5371
770	6150	6274
850	6250	10842
1200	8100	11206
1950	9800	12267
3000	12000	15267

SP-10030	TIME (V-INT)	V-INT
150	4850	4850
300	5250	5405
450	5650	5779
600	6050	6153
750	6450	6527
900	6850	6901
1050	7250	7275
1200	7650	7649
1350	8050	8023
1500	8450	8397
1650	8850	8771
1800	9250	9145
1950	9650	9519
2100	10050	9893
2250	10450	10267
2400	10850	10641
2550	11250	11015
2700	11650	11389
2850	12050	11763
3000	12450	12137



RECORDING DATA

SHOT BY S. S. L. PARTY 723 BOAT K/R TONDER APRIL 1974

INSTRUMENTS- DFS 3 NEAPS AND FARS FORMAT CABLE- LENGTH 2400 METRES

RECORD LENGTH- 6 SECONDS, 4 MS SAMPLE RATE GROUPS 48

FIELD FILTERS- LOWCUT-8 HZ / SLOPE-18 DB/OCTAVE GEOPHONE ARRAY 30X1.5 M

ENERGY SOURCE- ESSO SEISPROBE DEPTH 10 METERS SEISMOMETER TYPE-

ARRAY 412 GUNS DEPTH 10 METERS MULTIDOME ACC. CANCELLING

DEPTH 10 METERS GROUP INTERVAL 50 M

COVERAGE- 24 FOLD, 48 TRACE SHOT INTERVAL 50 M

TAPE FORMAT- 1/2 INCH 9 TRACK 800 RPT SEGA SURVEY- PRIMARY LORAN C

BOAT DIRECTION- DIRECTION OF INCREASING SHOTPOINTS SECONDARY SAT. NAV.

POLARITY- COMPRESSIONAL WAVE- POSITIVE ND. ON TAPE, BREAKS UP ON SECTION

PROCESSING DATA

TRUE AMPLITUDE RECOVERY AND SEISMIC EDIT

DECONVOLUTION BEFORE STACK-

NON-WHITEING GAPPED

1 FILTER PER TRACE, 196 MS IN LENGTH WITH A 28 MS GAP

DESIGN GATE- TRACE 1 ACCORDING TO WD. 1200-1300 MS TO MAX. TIME

TRACE 24 ACCORDING TO WD. 350-550 MS TO MAX. TIME

12 FOLD 24 TRACE COMMON DEPTH POINT GATHER UTILISING NEAR 24 GROUPS ONLY

VELOCITY ANALYSIS- CONSTANT VELOCITY GATHER AND VARIABLE VELOCITY STACK/GATHER

STATIC CORRECTION- FOR SHOT AND SEISMOMETER DEPTH 19MS

NORMAL MOVEOUT CORRECTION

FIRST BREAK SUPPRESSION- SEE TAPER-ON RECORD

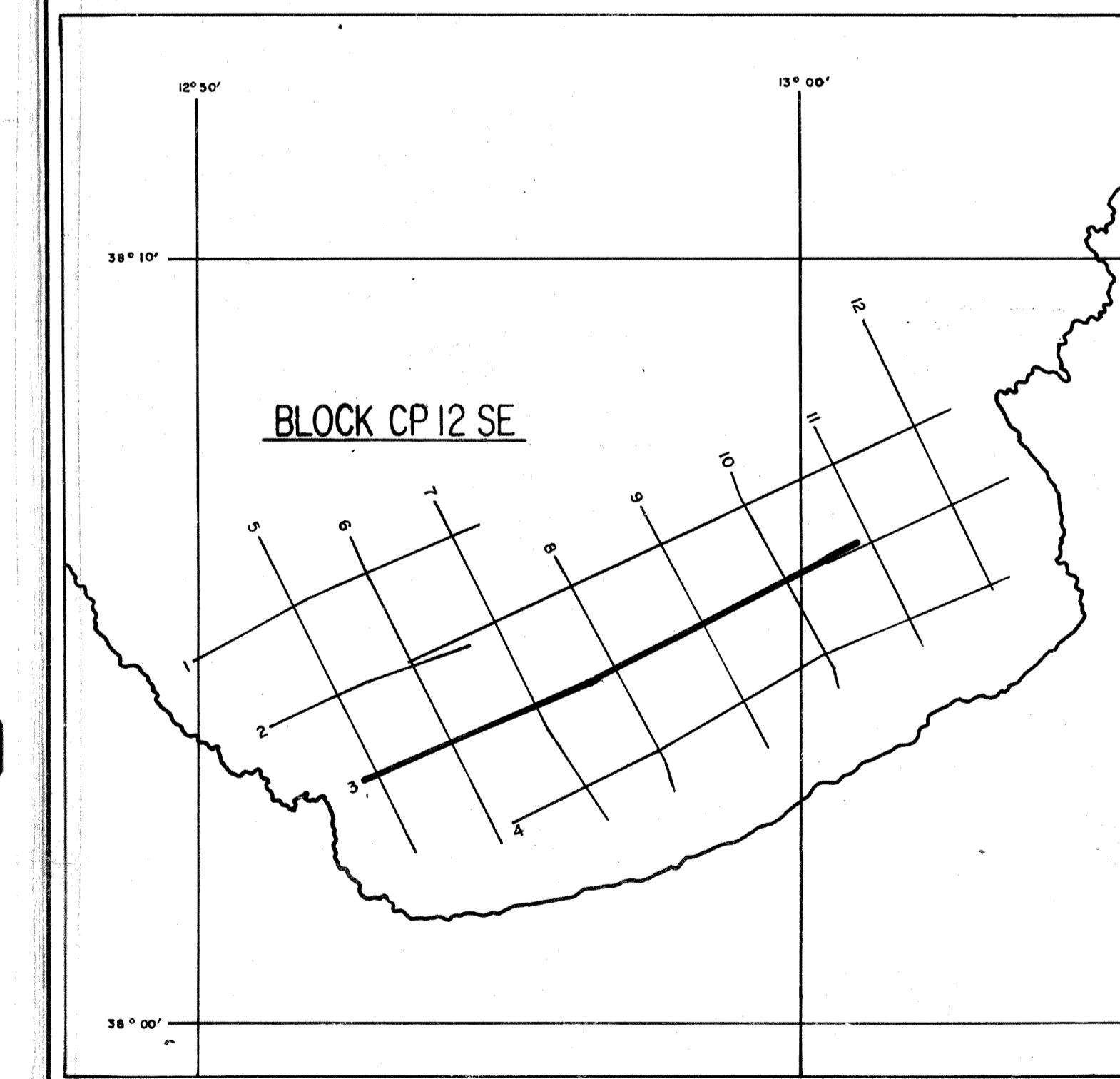
12 FOLD COMMON DEPTH POINT STACK

DECONVOLUTION AFTER STACK-

NON-WHITEING GAPPED

1 FILTER PER TRACE, 356 MS IN LENGTH WITH A 28 MS GAP

DESIGN GATE- 350 MS TO MAX. TIME



DATE PROCESSED- MAY/JUNE 1974

PARTY 723, GEOPHYSICAL SERVICE INTERNATIONAL LIMITED, CROYDON, U.K.