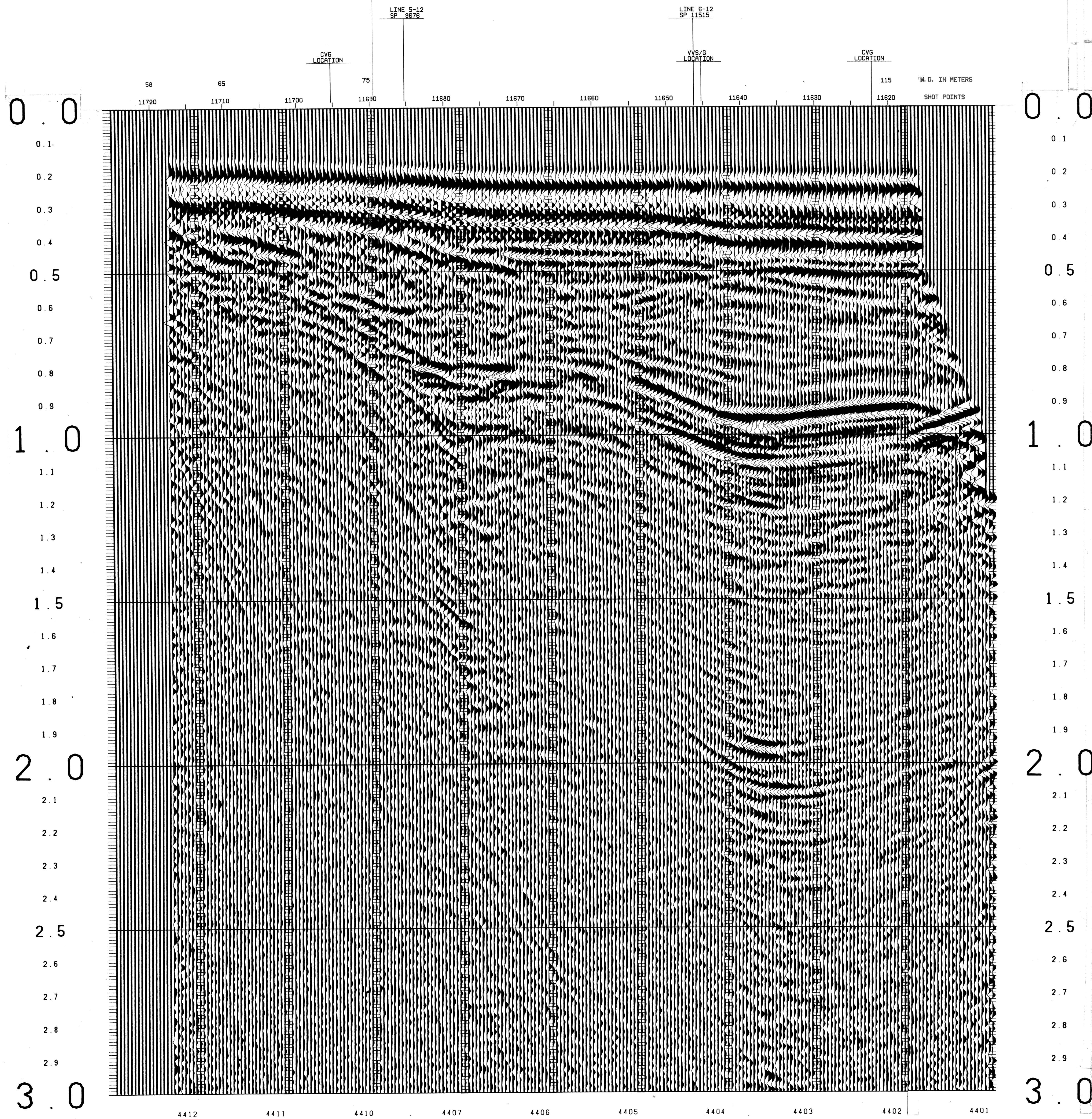


SP-11695	TIME	IV-RMS	IV-INT
0	4850	4850	
180	4850	5131	
360	5015	5413	
540	5180	5695	
720	5345	5977	
900	5510	6259	
1080	5675	6541	
1260	5840	6823	
1440	6005	7105	
1620	6170	7387	
1800	6335	7669	
1980	6500	7951	
2160	6665	8233	
2340	6830	8515	
2520	6995	8797	
2700	7160	9079	
2880	7325	9361	
3000	7490	9643	

SP-11645	TIME	IV-RMS	IV-INT
0	4850	4850	
200	4850	4943	
400	4900	5036	
600	4950	5129	
800	5000	5222	
1000	5050	5315	
1200	5100	5408	
1400	5150	5501	
1600	5200	5594	
1800	5250	5687	
2000	5300	5780	
2200	5350	5873	
2400	5400	5966	
2600	5450	6059	
2800	5500	6152	
3000	5550	6245	

SP-11622	TIME	IV-RMS	IV-INT
0	4850	4850	
200	4850	4943	
400	5100	5229	
600	5450	5795	
800	5800	6361	
1000	6150	6927	
1200	6500	7493	
1400	6850	8059	
1600	7200	8625	
1800	7550	9191	
2000	7900	9757	
2200	8250	10323	
2400	8600	10889	
2600	8950	11455	
2800	9300	12021	
3000	9650	12587	



# SEAGULL SICILY

## LINE 2 SPS 11620-11720

### 12 FOLD 24 TRACE

**RECORDING DATA**

SHOT BY S. S. L. PARTY 723 BOAT K/R TONDER APRIL 1974

INSTRUMENTS- DFS 3 NEARS AND FARMS FORMAT CABLE- LENGTH 2400 METERS  
 RECORD LENGTH- 6 SECONDS, 4 MS SAMPLE RATE GROUPS 48  
 FIELD FILTERS- LOWCUT-8 HZ / SLOPE-18 DB/OCTAVE GEOPHONE ARRAY 30X1.5 M  
 HIGHCUT-62 HZ / SLOPE-72 DB/OCTAVE SEISMOMETER TYPE- MULTIDYNE ACC. CANCELLING  
 ENERGY SOURCE- ESSO SEISPROBE ARRAY 4X2 GUNS DEPTH 10-20 METERS GROUP INTERVAL 50 M  
 DEPTH 10 METERS SEISMOMETER TYPE- MULTIDYNE ACC. CANCELLING  
 COVERAGE- 24 FOLD, 48 TRACE SHOT INTERVAL 50 M  
 TAPE FORMAT- 1/2 INCH 9 TRACK 800 BPI SEGA SURVEY- PRIMARY LORAN C  
 BOAT DIRECTION- DIRECTION OF INCREASING SHOTPOINTS SECONDARY SAT. NAV.  
 POLARITY- COMPRESSIONAL WAVE- POSITIVE NO. ON TAPE, BREAKS UP ON SECTION

S.P. Marked on section is centre of guns

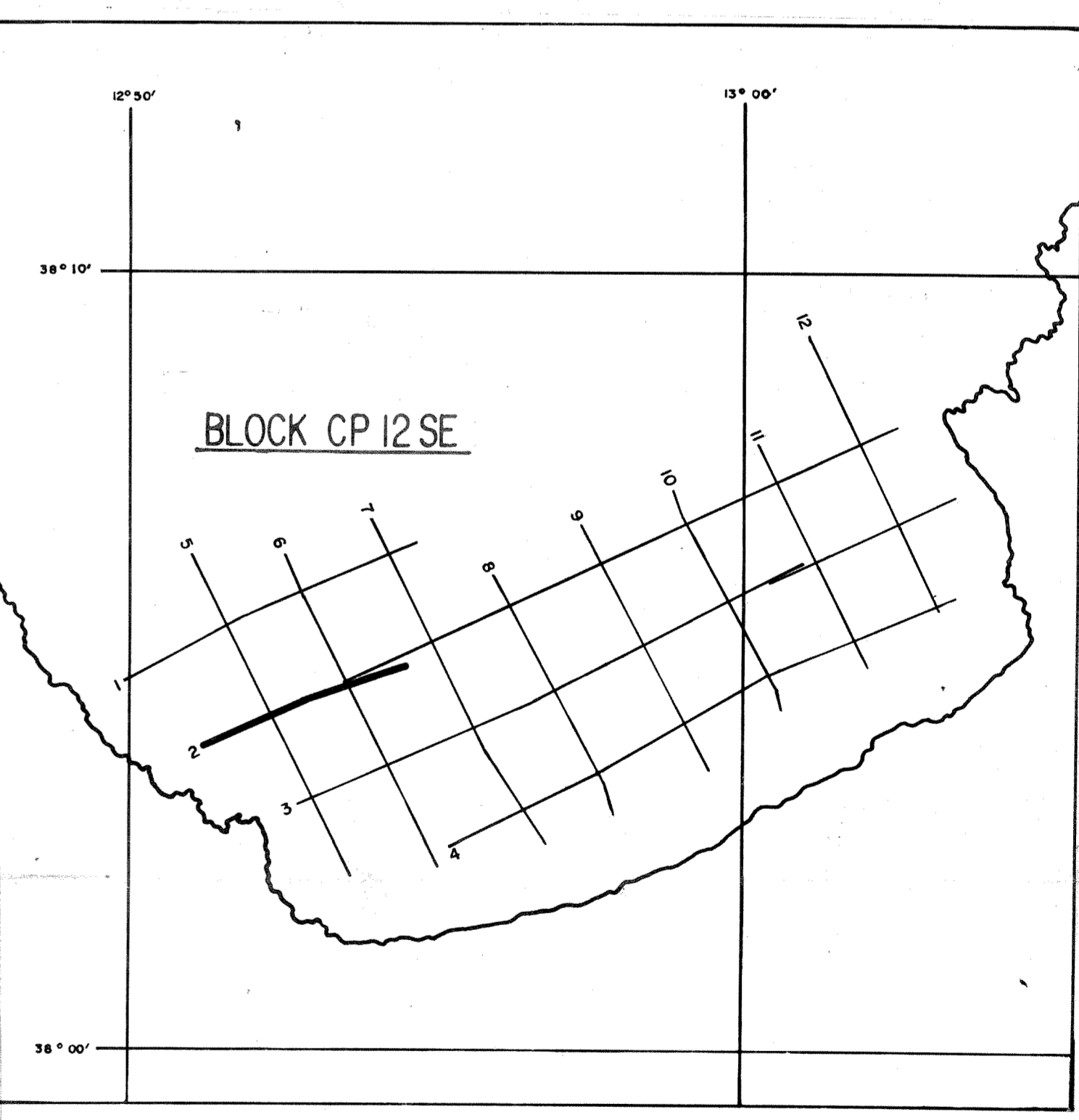
**PROCESSING DATA**

TRUE AMPLITUDE RECOVERY AND SEISMIC EDIT  
 DECONVOLUTION BEFORE STACK-

NON-WHITENING GAPPED  
 1 FILTER PER TRACE, 196 MS IN LENGTH WITH A 28 MS GAP  
 DESIGN GATE- TRACE 1 ACCORDING TO WD, 1200-1300 MS TO MAX. TIME  
 TRACE 24 ACCORDING TO WD, 360-550 MS TO MAX. TIME

12 FOLD 24 TRACE COMMON DEPTH POINT GATHER UTILISING NEAR 24 GROUPS ONLY  
 VELOCITY ANALYSIS- CONSTANT VELOCITY GATHER AND VARIABLE VELOCITY STACK/GATHER  
 STATIC CORRECTION- FOR SHOT AND SEISMOMETER DEPTH 1.9 MS  
 NORMAL MOVEOUT CORRECTION  
 FIRST BREAK SUPPRESSION- SEE TAPER-ON RECORD  
 12 FOLD COMMON DEPTH POINT STACK  
 DECONVOLUTION AFTER STACK-

NON-WHITENING GAPPED  
 1 FILTER PER TRACE, 356 MS IN LENGTH WITH A 28 MS GAP  
 DESIGN GATE- 350 MS TO MAX. TIME



**DATE PROCESSED-** MAY/JUNE 1974

PARTY 722, GEOPHYSICAL SERVICE INTERNATIONAL LIMITED, CROYDON, U.K.