

SEAGULL SICILY

LINE 1 SPS 11240-11390

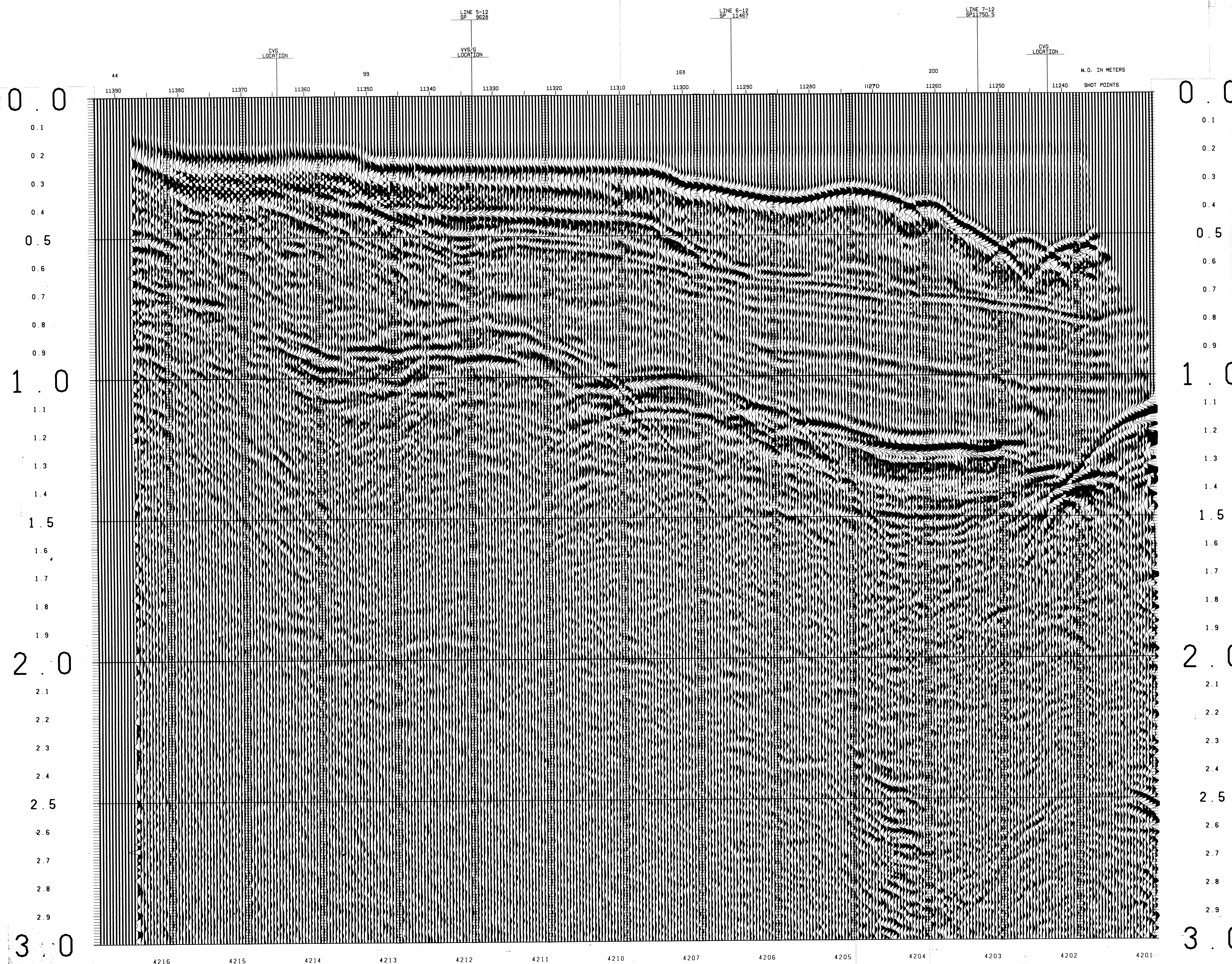


12 FOLD 24 TRACE

SP-11364	TIME	V-RMS	V-TNT
0	4850	4850	
200	4850	5329	
520	5150	7362	
700	5000	6332	
880	6400	9884	
1300	7700	12494	
2075	9300	13577	
3000	10840		

SP-11388	TIME	V-RMS	V-TNT
0	4850	4850	
470	4850	4850	
850	5950	5338	
800	5800	7538	
960	6100	8152	
1290	7000	9127	
1290	7000	12796	
2000	9000	13111	
3000	10550		

SP-11269	TIME	V-RMS	V-TNT
0	4850	4850	
550	4850	5306	
860	5950	5338	
1100	6400	7361	
1400	5000	7361	
1560	6900	12131	
2300	8800	12188	
3000	14000	17225	



RECORDING DATA

SHOT BY S.S.L. PARTY 723 BOAT K/R TONDER APRIL 1974

INSTRUMENTS- OFS 3 NEARS AND FARs FORMAT

RECORD LENGTH- 6 SECONDS, 4 MS SAMPLE RATE

FIELD FILTERS- LOWCUT-6 HZ / SLOPE-18 DB/OCTAVE

ENERGY SOURCE- HIGHCUT-62 HZ / SLOPE- 72 DB/OCTAVE

ESSO SEISPROBE

ARRAY 4X2 GUNS

DEPTH 10 METERS

COVERAGE- 24 FOLD, 48 TRACE

TAPE FORMAT- 1/2 INCH 9 TRACK 800 SPT SEGA

BOAT DIRECTION- DIRECTION OF INCREASING SHOTPOINTS

POLARITY- COMPRESSIONAL WAVE-POSITIVE ND. ON TAPE, BREAKS UP ON SECTION

CABLE- LENGTH 2400 METRES

GROUPS 48

GEOPHONE ARRAY 30X1.5 M

SEISMOMETER TYPE- MULTIDYNE ACC. CANCELLING

DEPTH 10-20 METERS

GROUP INTERVAL 50 M

SHOT INTERVAL 50 M

PRIMARY LORAN C

SECONDARY SAT. NAV.

COMPRESSIONAL WAVE-POSITIVE ND. ON TAPE, BREAKS UP ON SECTION

PROCESSING DATA

TRUE AMPLITUDE RECOVERY AND SEISMIC EDIT

DECONVOLUTION BEFORE STACK-

NON-WHITENING GAPPED

1 FILTER PER TRACE, 196 MS IN LENGTH WITH A 28 MS GAP

DESIGN GATE- TRACE 1 ACCORDING TO ND, 1200-1300 MS TO MAX. TIME

TRACE 24 ACCORDING TO ND, 360-550 MS TO MAX. TIME

12 FOLD 24 TRACE COMMON DEPTH POINT GATHER UTILISING NEAR 24 GROUPS ONLY

VELOCITY ANALYSIS- CONSTANT VELOCITY GATHER AND VARIABLE VELOCITY STACK/GATHER

STATIC CORRECTION- FOR SHOT AND SEISMOMETER DEPTH 19MS

NORMAL MOVEOUT CORRECTION

FIRST BREAK SUPPRESSION- SEE TAPER-ON RECORD

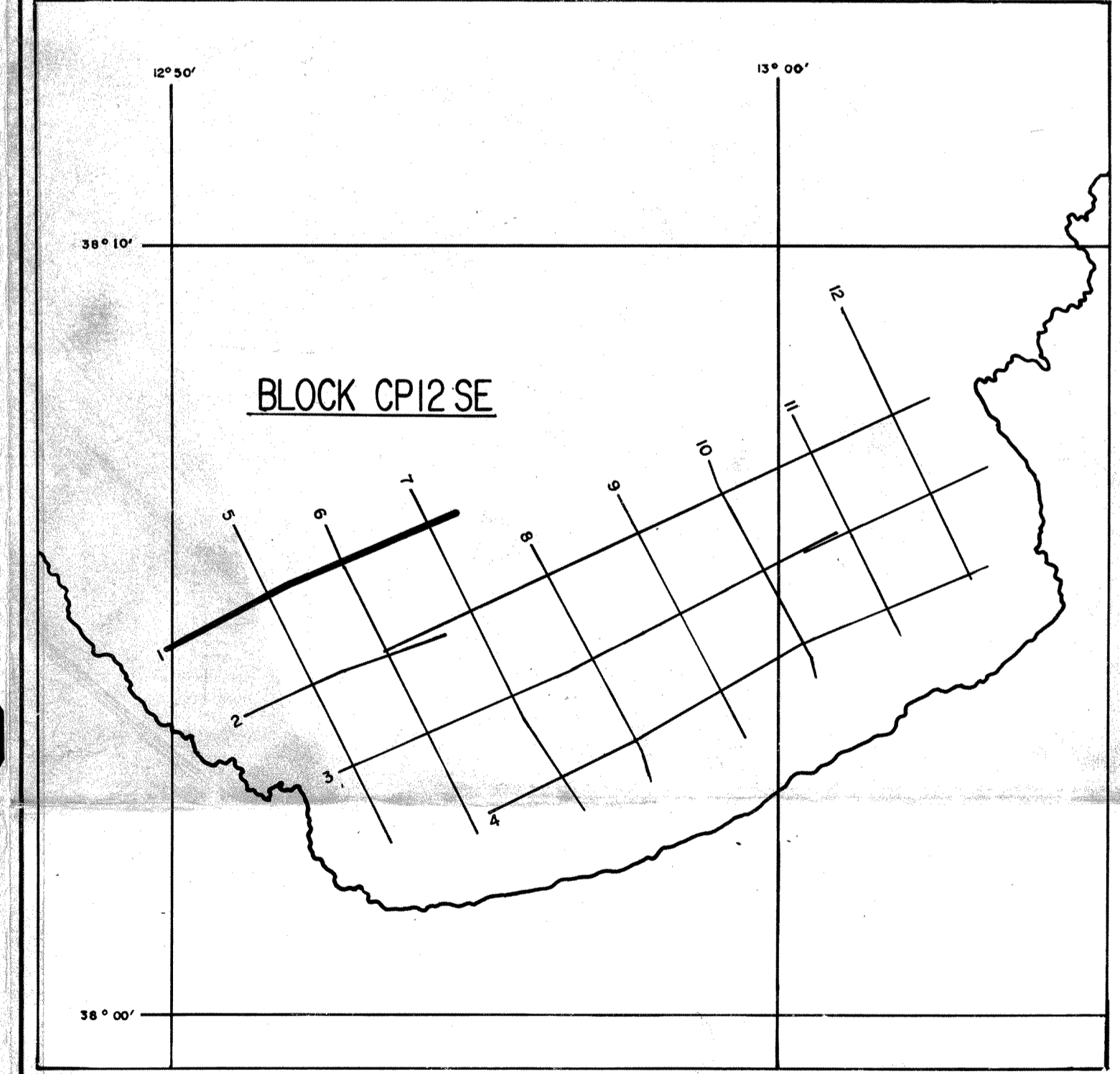
12 FOLD COMMON DEPTH POINT STACK

DECONVOLUTION AFTER STACK-

NON-WHITENING GAPPED

1 FILTER PER TRACE, 356 MS IN LENGTH WITH A 28 MS GAP

DESIGN GATE- 350 MS TO MAX. TIME



DATE PROCESSED- MAY/JUNE 1974

PARTY 723, GEOPHYSICAL SERVICE INTERNATIONAL LIMITED, CROYDON, U.K.