

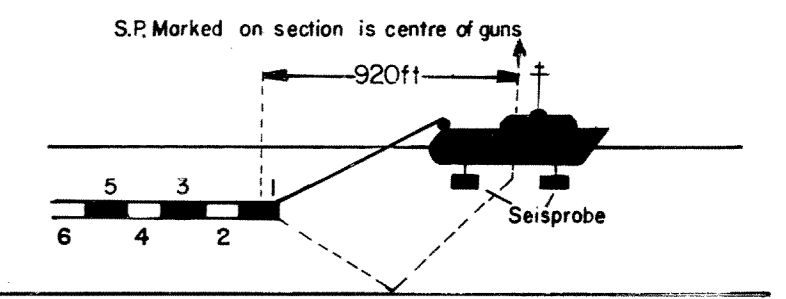
SEAGULL SICILY

LINE 7 SPS 11730-11900

12 FOLD 24 TRACE

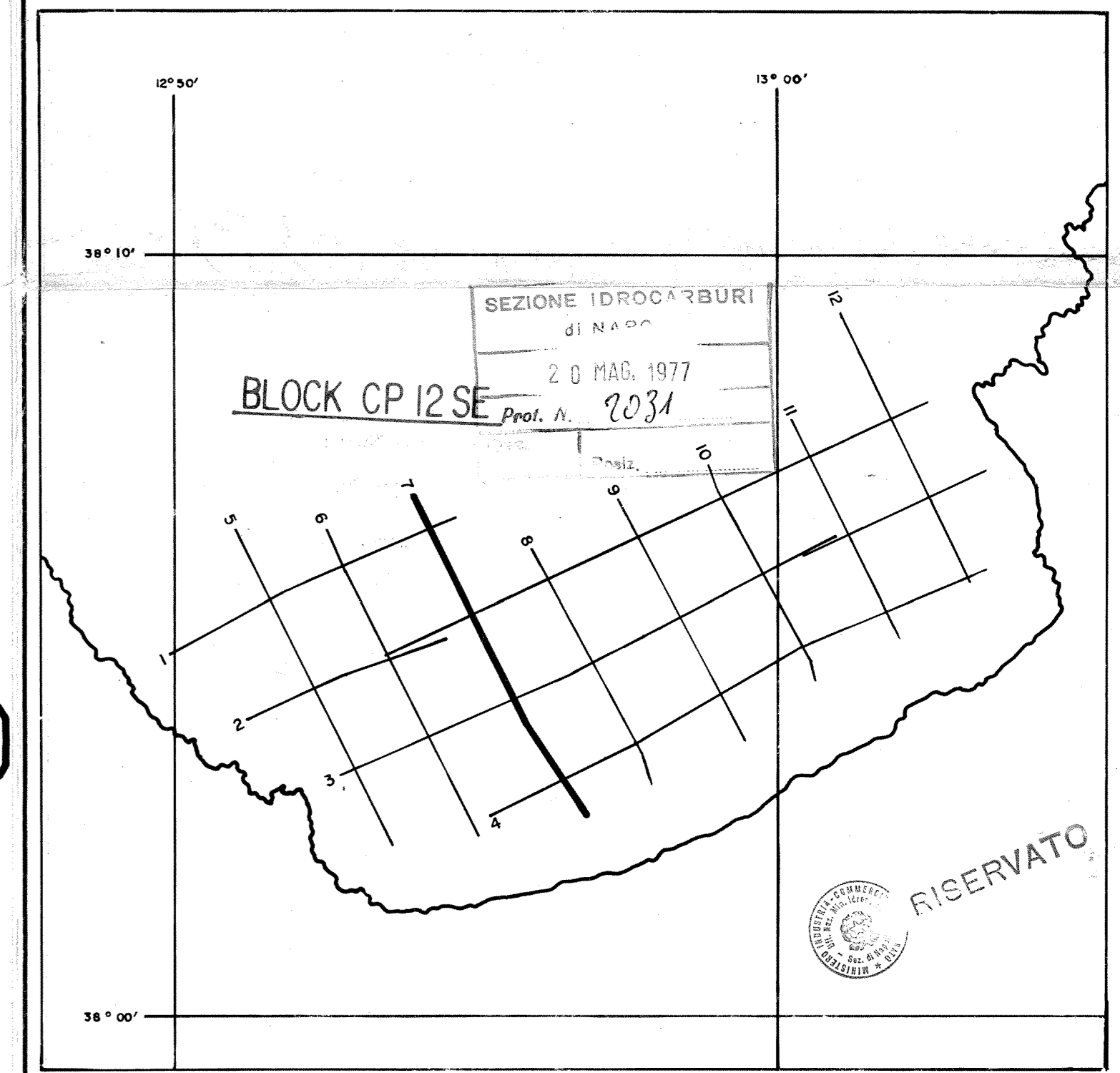
RECORDING DATA

SHOT BY S.S.L. PARTY 723 BOAT K/R TONDER APRIL 1974
 INSTRUMENTS- OFS 3 NEARS AND FARS FORMAT CABLE- LENGTH 2400 METRES
 RECORD LENGTH- 6 SECONDS, 4 MS SAMPLE RATE GROUPS 48
 FIELD FILTERS- LOWCUT-8 HZ / SLOPE-18 DB/OCTAVE GEOPHONE ARRAY 30X1.5 M
 ENERGY SOURCE- ESSO SEISPROBE MULTIDYNE ACC. CANCELLING
 ARRAY 4X2 GUNS DEPTH 10-20 METERS GROUP INTERVAL 50 M
 DEPTH 10 METERS SHOT INTERVAL 50 M
 COVERGE- 24 FOLD, 48 TRACE SURVEY- PRIMARY LORAN C
 TAPE FORMAT- 1/2 INCH 9 TRACK 800 BPT SEQ SECONDARY SAT. NAV.
 BOAT DIRECTION- DIRECTION OF INCREASING SHOTPOINTS
 POLARITY- COMPRESSONAL WAVE-POSITIVE NO. ON TAPE, BREAKS UP ON SECTION



PROCESSING DATA

TRUE AMPLITUDE RECOVERY AND SEISMIC EDIT
 DECONVOLUTION BEFORE STACK- NON-WHITENING GAPPED
 1 FILTER PER TRACE, 196 MS IN LENGTH WITH A 28 MS GAP
 DESIGN GATE- TRACE 1 ACCORDING TO WD, 1200-1300 MS TO MAX. TIME
 TRACE 24 ACCORDING TO WD, 380-550 MS TO MAX. TIME
 12 FOLD 24 TRACE COMMON DEPTH POINT GATHER UTILISING NEAR 24 GROUPS ONLY
 VELOCITY ANALYSIS- CONSTANT VELOCITY GATHER AND VARIABLE VELOCITY STACK/GATHER
 STATIC CORRECTION- FOR SHOT AND SEISMOMETER DEPTH 18 MS
 NORMAL MOVEOUT CORRECTION
 FIRST BREAK SUPPRESSION- SEE TAPER-ON RECORD
 12 FOLD COMMON DEPTH POINT STACK



DATE PROCESSED- MAY/TUNE 1974

PARTY 723, GEOPH Encl. 2

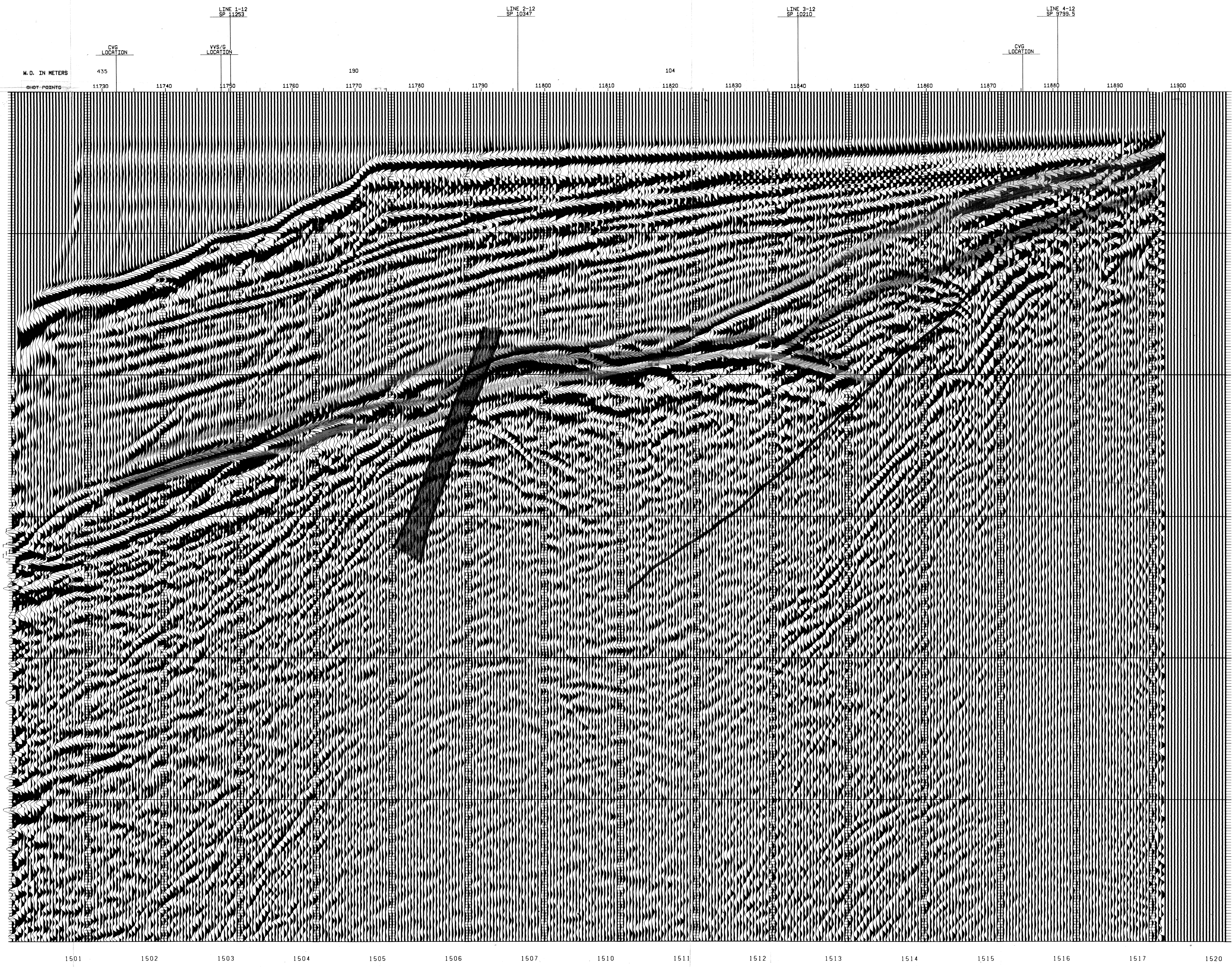
TENTATIVE INTERPRETATION OF A NNW-SSE SEISMIC SECTION OF PERMIT CP.12. SE

- Pliocene and Quaternary
- Upper Miocene (?)
- Middle Miocene olistostroma
- Lower Miocene algal lmst.
- Cretaceous rudistae lmst.
- Thrust fault
- Normal fault

SP-11749	LINE V-RMS V-INT
0	4850
50	4925
100	4950
150	5000
200	5050
250	5100
300	5150
350	5200
400	5250
450	5300
500	5350
550	5400
600	5450
650	5500
700	5550
750	5600
800	5650
850	5700
900	5750
950	5800
1000	5850
1050	5900
1100	5950
1150	6000
1200	6050
1250	6100
1300	6150
1350	6200
1400	6250
1450	6300
1500	6350
1550	6400
1600	6450
1650	6500
1700	6550
1750	6600
1800	6650
1850	6700
1900	6750
1950	6800
2000	6850
2050	6900
2100	6950
2150	7000
2200	7050
2250	7100
2300	7150
2350	7200
2400	7250
2450	7300
2500	7350
2550	7400
2600	7450
2650	7500
2700	7550
2750	7600
2800	7650
2850	7700
2900	7750
2950	7800
3000	7850

SP-11795	LINE V-RMS V-INT
0	4850
50	4925
100	4950
150	5000
200	5050
250	5100
300	5150
350	5200
400	5250
450	5300
500	5350
550	5400
600	5450
650	5500
700	5550
750	5600
800	5650
850	5700
900	5750
950	5800
1000	5850
1050	5900
1100	5950
1150	6000
1200	6050
1250	6100
1300	6150
1350	6200
1400	6250
1450	6300
1500	6350
1550	6400
1600	6450
1650	6500
1700	6550
1750	6600
1800	6650
1850	6700
1900	6750
1950	6800
2000	6850
2050	6900
2100	6950
2150	7000
2200	7050
2250	7100
2300	7150
2350	7200
2400	7250
2450	7300
2500	7350
2550	7400
2600	7450
2650	7500
2700	7550
2750	7600
2800	7650
2850	7700
2900	7750
2950	7800
3000	7850

SP-11840	LINE V-RMS V-INT
0	4850
50	4925
100	4950
150	5000
200	5050
250	5100
300	5150
350	5200
400	5250
450	5300
500	5350
550	5400
600	5450
650	5500
700	5550
750	5600
800	5650
850	5700
900	5750
950	5800
1000	5850
1050	5900
1100	5950
1150	6000
1200	6050
1250	6100
1300	6150
1350	6200
1400	6250
1450	6300
1500	6350
1550	6400
1600	6450
1650	6500
1700	6550
1750	6600
1800	6650
1850	6700
1900	6750
1950	6800
2000	6850
2050	6900
2100	6950
2150	7000
2200	7050
2250	7100
2300	7150
2350	7200
2400	7250
2450	7300
2500	7350
2550	7400
2600	7450
2650	7500
2700	7550
2750	7600
2800	7650
2850	7700
2900	7750
2950	7800
3000	7850



0
0.1
0.2
0.3
0.4
0.5
0.6
0.7
0.8
0.9
1.0
1.1
1.2
1.3
1.4
1.5
1.6
1.7
1.8
1.9
2.0
2.1
2.2
2.3
2.4
2.5
2.6
2.7
2.8
2.9
3.0

1501 1502 1503 1504 1505 1506 1507 1510 1511 1512 1513 1514 1515 1516 1517 1520