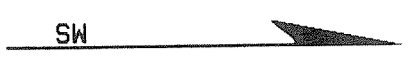
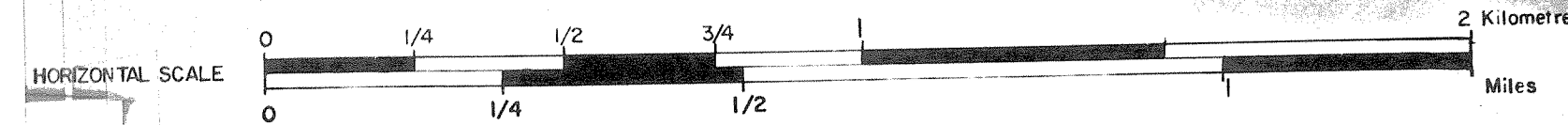


C. L. E. I. N. SEAGULL S. P. A.
BLOCK CP13SE
LINE 16 SPS 9250 TO 9358

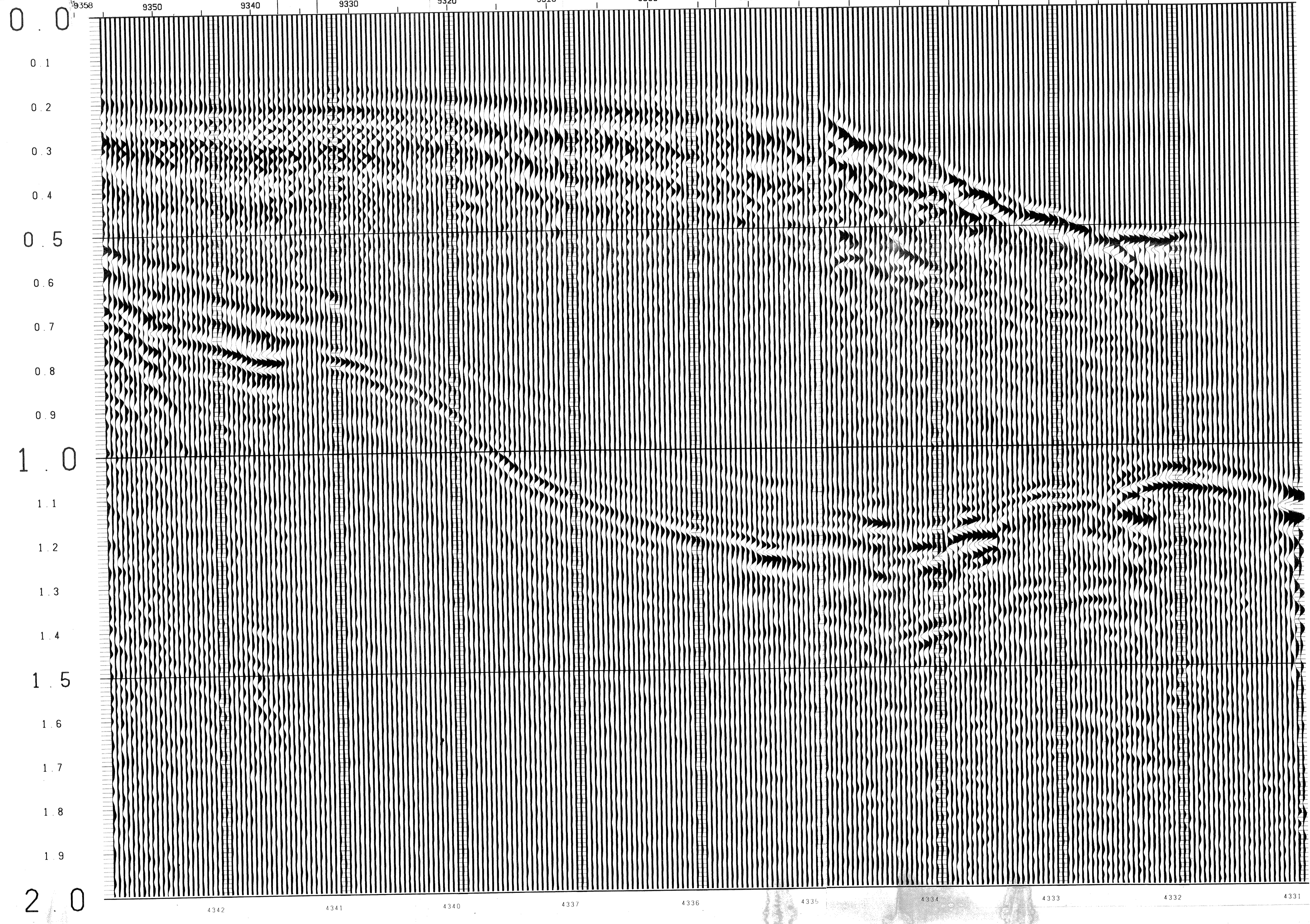


TIME	V-RMS	V-INT
0	4850	4850
200	4850	5146
400	5000	5933
500	5200	6896
610	5500	8430
710	6000	9747
800	6875	11227
1110	7350	11927
1560	8800	12727
2000	9800	

TIME	V-RMS	V-INT
0	4850	4850
200	4850	5015
500	4950	6170
615	5200	7308
780	5300	8465
820	5700	9797
1250	6300	11465
1375	7250	11685
1750	8400	13261
2000	9150	

TIME	V-RMS	V-INT
0	4850	4850
520	4850	5081
800	4925	5879
910	5050	6589
960	5200	7419
1150	5450	8797
1325	6000	9742
1520	6600	10586
1750	7250	11460
2000	7900	

LINE 8-13 SP 7212.5
CVG LOCATION
22 27 48 48 180 350 W.D. IN METERS
SHOT POINTS
9358 9350 9340 9330 9320 9310 9300 9290 9280 9270 9260 9250



SEAGULL SICILY

LINE 16 SPS9250-9358

12 FOLD 24 TRACE

RECORDING DATA

SHOT BY S.S.L. PARTY 723 BOAT K/R TONDER APRIL 1974

INSTRUMENTS- DFS 3 NEARS AND FARMS FORMAT CABLE- LENGTH 2400 METRES

RECORD LENGTH- 6 SECONDS, 4 MS SAMPLE RATE GROUPS 48

FIELD FILTERS- LOWCUT-8 HZ / SLOPE-18 DB/OCTAVE GEOPHONE ARRAY 30X1.5 M

ENERGY SOURCE- HIGHCUT-62 HZ / SLOPE- 72 DB/OCTAVE SEISMOMETER TYPE- MULTIDYNE ACC. CANCELLING DEPTH 10-20 METERS

ESSO SEISPROBE ARRAY 4X2 GUNS DEPTH 10 METERS GROUP INTERVAL 50 M

COVERAGE- 24 FOLD, 48 TRACE SURVEY- PRIMARY LORAN C SECONDARY SAT. NAV.

TAPE FORMAT- 1/2 INCH 9 TRACK 800 BPI SEGA DIRECTION OF INCREASING SHOTPOINTS COMPRESSIONAL WAVE- POSITIVE NO. ON TAPE, BREAKS UP ON SECTION

BOAT DIRECTION- POLARITY-

RISERVATO

PROCESSING DATA

TRUE AMPLITUDE RECOVERY AND SEISMIC EDIT

DECONVOLUTION BEFORE STACK-

NON-WHITENING GAPPED

1 FILTER PER TRACE, 196 MS IN LENGTH WITH A 28 MS GAP

DESIGN GATE- TRACE 1 ACCORDING TO WD, 1200-1300 MS TO MAX. TIME

TRACE 24 ACCORDING TO WD, 360- 550 MS TO MAX. TIME

12 FOLD 24 TRACE COMMON DEPTH POINT GATHER UTILISING NEAR 24 GROUPS ONLY

VELOCITY ANALYSIS- CONSTANT VELOCITY GATHER AND VARIABLE VELOCITY STACK/GATHER

STATIC CORRECTION- FOR SHOT AND SEISMOMETER DEPTH 14 MS

NORMAL MOVEOUT CORRECTION

FIRST BREAK SUPPRESSION- SEE TAPER-ON RECORD

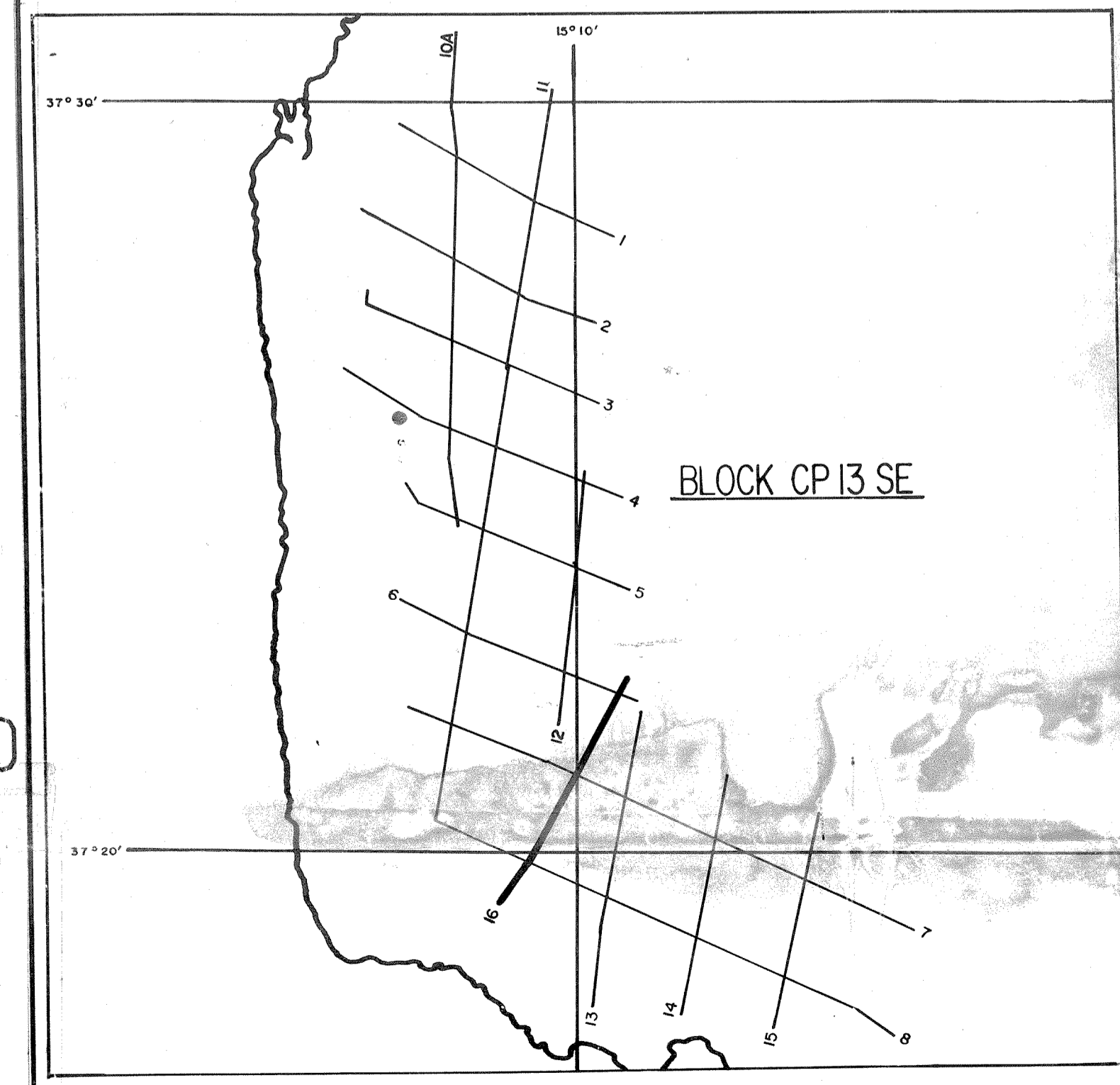
12 FOLD COMMON DEPTH POINT STACK

DECONVOLUTION AFTER STACK-

NON-WHITENING GAPPED

1 FILTER PER TRACE, 356 MS IN LENGTH WITH A 28 MS GAP

DESIGN GATE- 350 MS TO MAX. TIME



DATE PROCESSED- MAY/JUNE 1974

PARTY 722, GEOPHYSICAL SERVICE INTERNATIONAL LIMITED, CROYDON, U.K.