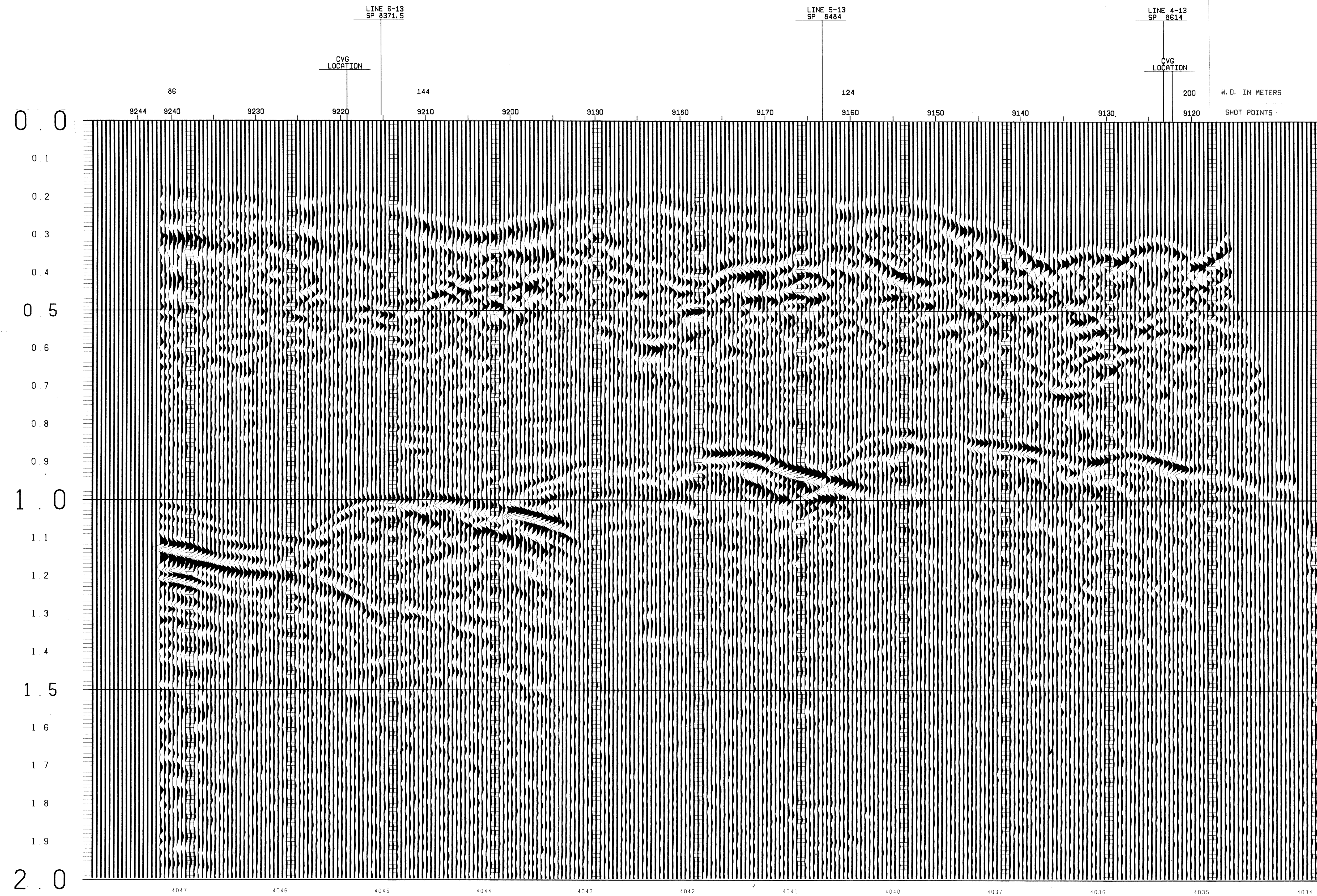




SP-9218	TIME	V-RMS	V-INT
0	4850	4850	
375	4850	5074	
480	4900	5211	
580	5150	5387	
680	5350	5609	
1020	5500	6387	
1225	6150	8385	
1450	6700	9131	
2000	8100	10965	

SP-9164	TIME	V-RMS	V-INT
0	4850	4850	
250	4850	4951	
480	4900	5443	
625	5140	5930	
775	5200	7846	
1000	5800	10500	
1200	6200	7523	
1400	7000	14945	
2000	9800		

SP-9122	TIME	V-RMS	V-INT
0	4850	4850	
350	4850	5015	
500	4900	5302	
610	4975	5443	
800	5200	5865	
900	5450	7141	
1100	6250	9010	
1375	7200	15146	
2000	9300	12758	



# SEAGULL SICILY

## LINE 12 SPS 9120 - 9244

### 12 FOLD 24 TRACE

**RECORDING DATA**

SHOT BY S.S.L. PARTY 723 BOAT K/R TONDER APRIL 1974

INSTRUMENTS- DFS 3 NEARS AND FARMS FORMAT CABLE- LENGTH 2400 METRES

RECORD LENGTH- 6 SECONDS, 4 MS SAMPLE RATE GROUPS 48

FIELD FILTERS- LOWCUT-8 HZ / SLOPE-18 DB/OCTAVE GEOPHONE ARRAY 30X1.5 M

ENERGY SOURCE- ESSO SEISPROBE MULTIDYNE ACC. CANCELLING DEPTH 10-20 METERS

ARRAY 4X2 GUNS DEPTH 10 METERS GROUP INTERVAL 50 M

24 FOLD, 48 TRACE SURVEY- PRIMARY LORAN C

COVERAGE- 1/2 INCH 9 TRACK 800 BPI SEGA SECONDARY SAT. NAV.

BOAT DIRECTION- DIRECTION OF INCREASING SHOTPOINTS

POLARITY- COMPRESSIONAL WAVE- POSITIVE NO. ON TAPE, BREAKS UP ON SECTION

**PROCESSING DATA**

TRUE AMPLITUDE RECOVERY AND SEISMIC EDIT

DECONVOLUTION BEFORE STACK-

- NON-WHITENING GAPPED
- 1 FILTER PER TRACE, 196 MS IN LENGTH WITH A 28 MS GAP
- DESIGN GATE- TRACE 1 ACCORDING TO WD, 1200-1300 MS TO MAX. TIME
- TRACE 24 ACCORDING TO WD, 360- 550 MS TO MAX. TIME

12 FOLD 24 TRACE COMMON DEPTH POINT GATHER UTILISING NEAR 24 GROUPS ONLY

VELOCITY ANALYSIS- CONSTANT VELOCITY GATHER AND VARIABLE VELOCITY STACK/GATHER

STATIC CORRECTION- FOR SHOT AND SEISMOMETER DEPTH 15MS

NORMAL MOVEOUT CORRECTION

FIRST BREAK SUPPRESSION- SEE TAPER-ON RECORD

12 FOLD COMMON DEPTH POINT STACK

DECONVOLUTION AFTER STACK-

- NON-WHITENING GAPPED
- 1 FILTER PER TRACE, 356 MS IN LENGTH WITH A 28 MS GAP
- DESIGN GATE- 350 MS TO MAX. TIME

