

# SEAGULL SICILY

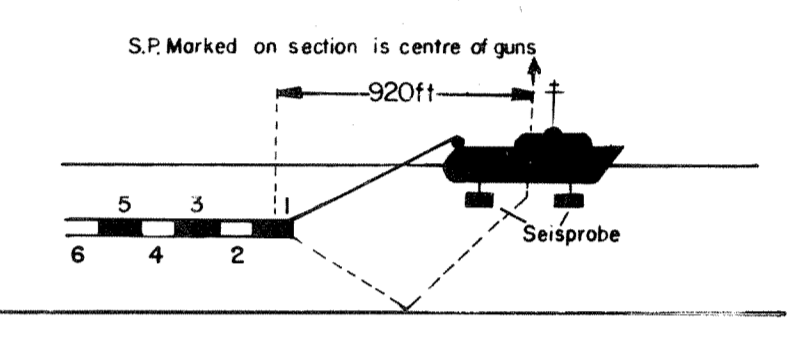
## LINE 10A SPS9370-9580



12 FOLD 24 TRACE

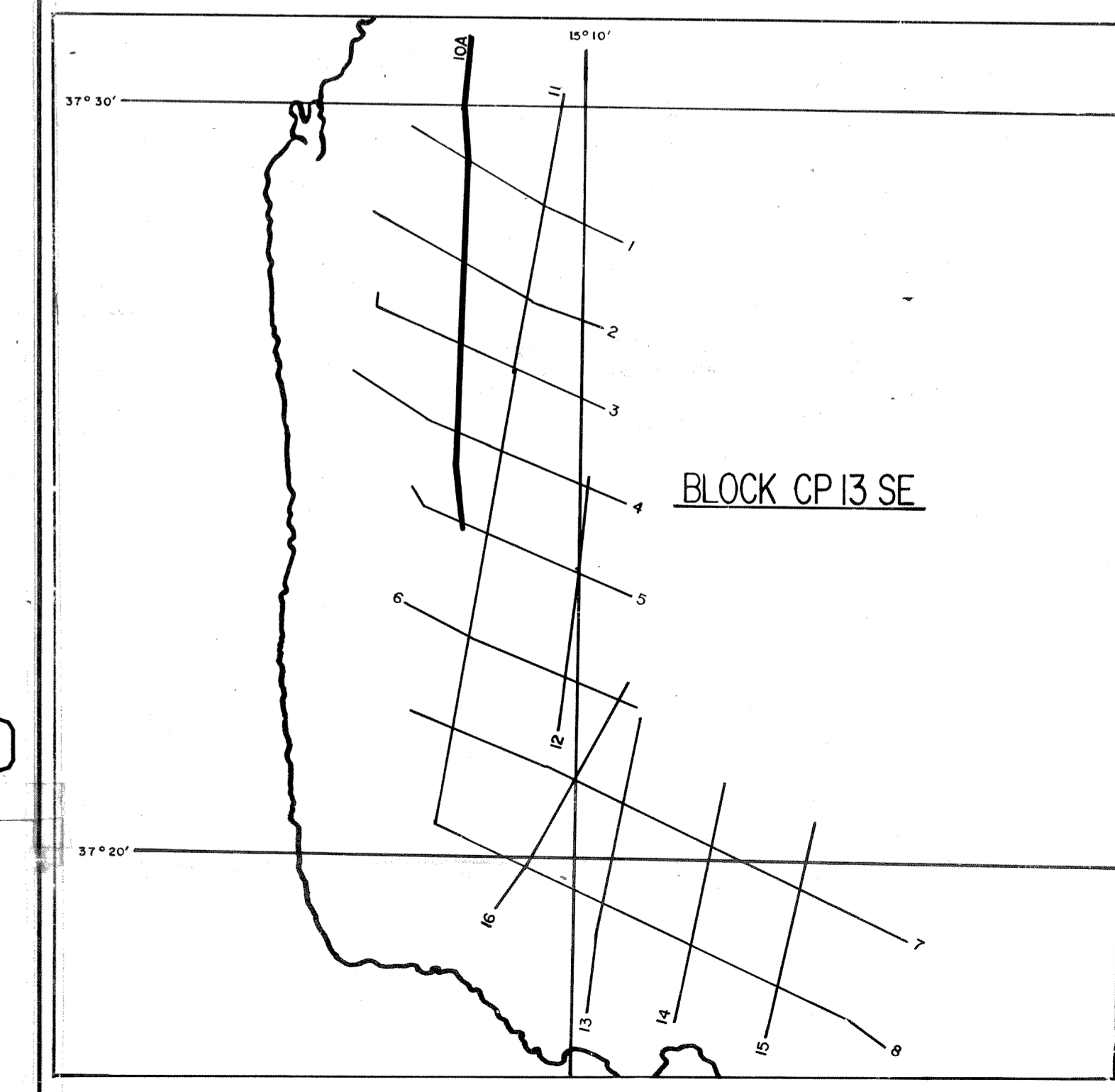
### RECORDING DATA

SHOT BY S.S.L. PARTY 723 BOAT K/R TONDER APRIL 1974  
 INSTRUMENTS- DFS 3 NEARS AND FARS FORMAT CABLE- LENGTH 2400 METRES  
 RECORD LENGTH- 6 SECONDS, 4 MS SAMPLE RATE GROUPS 48  
 FIELD FILTERS- LOWCUT-8 HZ / SLOPE-18 DB/OCTAVE GEOPHONE ARRAY 30X1.5 M  
 HIGHCUT-62 HZ / SLOPE-18 DB/OCTAVE SEISMOMETER TYPE-  
 ENERGY SOURCE- ESSO SEISPROBE MULTITIME ACC. CANCELLING  
 ARRAY 4X2 GUNS DEPTH 10-20 METERS  
 DEPTH 10 METERS GROUP INTERVAL 50 M  
 24 FOLD, 48 TRACE SHOT INTERVAL 50 M  
 COVERAGE- 1/2 INCH 9 TRACK 800 BPT SEG SURVEY- PRIMARY LORAN C  
 TAPE FORMAT- DIRECTION OF INCREASING SHOTPOINTS SECONDARY SAT. NAV.  
 BOAT DIRECTION- COMPRESSIONAL WAVE- POSITIVE NO. ON TAPE, BREAKS UP ON SECTION  
 POLARITY-



### PROCESSING DATA

TRUE AMPLITUDE RECOVERY AND SEISMIC EDIT  
 DECONVOLUTION BEFORE STACK- NON-WHITENING GAPPED  
 1 FILTER PER TRACE, 196 MS IN LENGTH WITH A 28 MS GAP  
 DESIGN GATE- TRACE 1 ACCORDING TO WD, 1200-1300 MS TO MAX. TIME  
 TRACE 24 ACCORDING TO WD, 380-550 MS TO MAX. TIME  
 12 FOLD 24 TRACE COMMON DEPTH POINT GATHER UTILISING NEAR 24 GROUPS ONLY  
 VELOCITY ANALYSIS- CONSTANT VELOCITY GATHER AND VARIABLE VELOCITY STACK/GATHER  
 FOR SHOT AND SEISMOMETER DEPTH 14 MS  
 STATIC CORRECTION- NORMAL MOVEOUT CORRECTION  
 FIRST BREAK SUPPRESSION- SEE TAPER-ON RECORD  
 12 FOLD COMMON DEPTH POINT STACK  
 DECONVOLUTION AFTER STACK- NON-WHITENING GAPPED  
 1 FILTER PER TRACE, 356 MS IN LENGTH WITH A 28 MS GAP  
 DESIGN GATE- 350 MS TO MAX. TIME



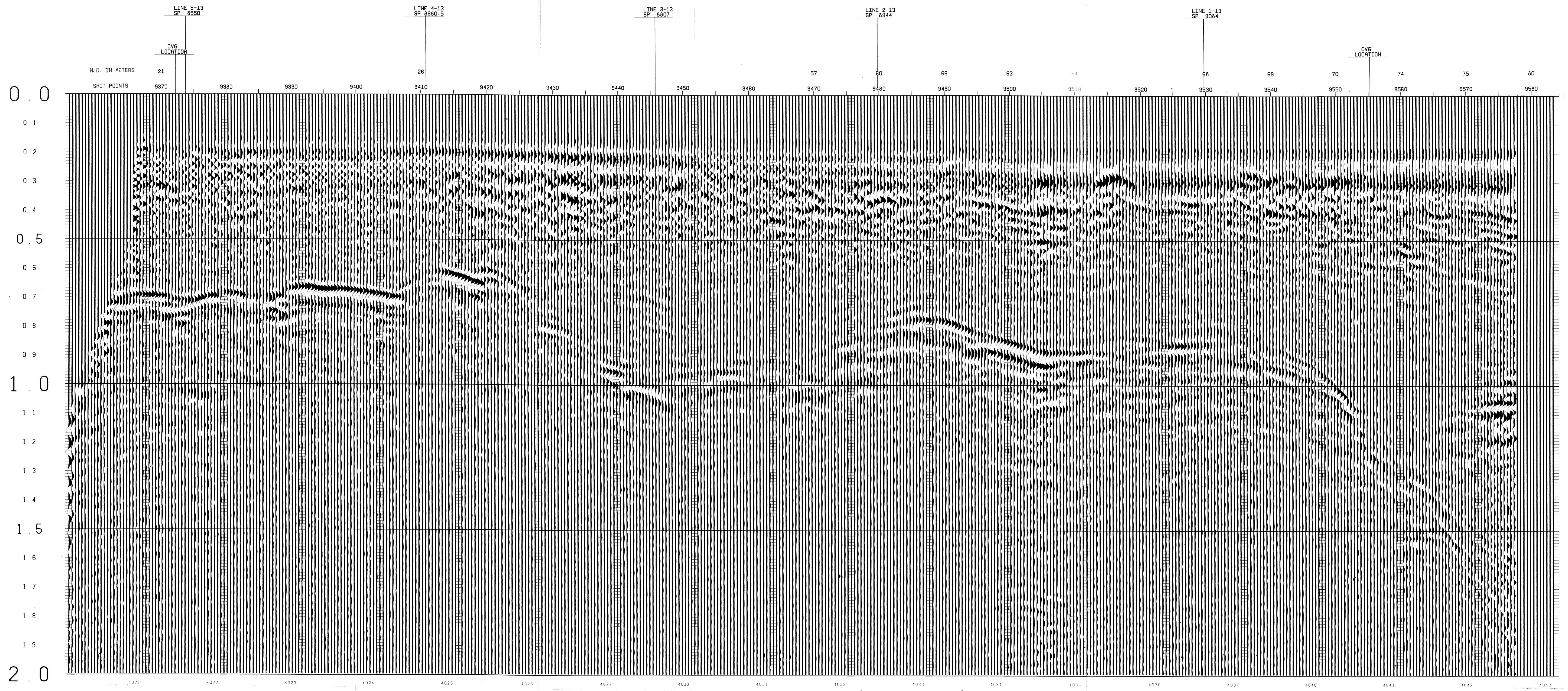
DATE PROCESSED- MAY/JUNE 1974

SP-9372	TIME	V-RMS	V-INT
0	4850	4850	
200	4850	4850	
425	5950	5239	
740	5900	5872	
1000	6800	5875	
1200	8000	12362	
2000	9300	10964	

SP-9450	TIME	V-RMS	V-INT
0	4850	4850	
225	4850	4850	
510	5060	5219	
825	5950	5888	
1170	6800	10021	
1370	8000	11825	
2000	9000	10861	

SP-9486	TIME	V-RMS	V-INT
0	4850	4850	
150	4850	4850	
350	5000	5955	
650	5000	6639	
950	5000	10940	
1050	6000	12120	
1400	8450	12812	
2000	10000	12812	

SP-9555	TIME	V-RMS	V-INT
0	4850	4850	
200	4850	4850	
580	5100	5277	
1150	5500	5873	
1425	6750	13061	
1825	7850	13061	
2000	8700	11777	



0.0  
0.1  
0.2  
0.3  
0.4  
0.5  
0.6  
0.7  
0.8  
0.9  
1.0  
1.1  
1.2  
1.3  
1.4  
1.5  
1.6  
1.7  
1.8  
1.9  
2.0

0.0  
0.1  
0.2  
0.3  
0.4  
0.5  
0.6  
0.7  
0.8  
0.9  
1.0  
1.1  
1.2  
1.3  
1.4  
1.5  
1.6  
1.7  
1.8  
1.9  
2.0

LINE 5-13 SP 8550  
 LINE 4-13 SP 8880.5  
 LINE 3-13 SP 8807  
 LINE 2-13 SP 8944  
 LINE 1-13 SP 9094

SHOT POINTS 9370 9380 9390 9400 9410 9420 9430 9440 9450 9460 9470 9480 9490 9500 9510 9520 9530 9540 9550 9560 9570 9580

4021 4022 4023 4024 4025 4026 4027 4028 4029 4030 4031 4032 4033 4034 4035 4036 4037 4038 4039 4040 4041 4042 4043