

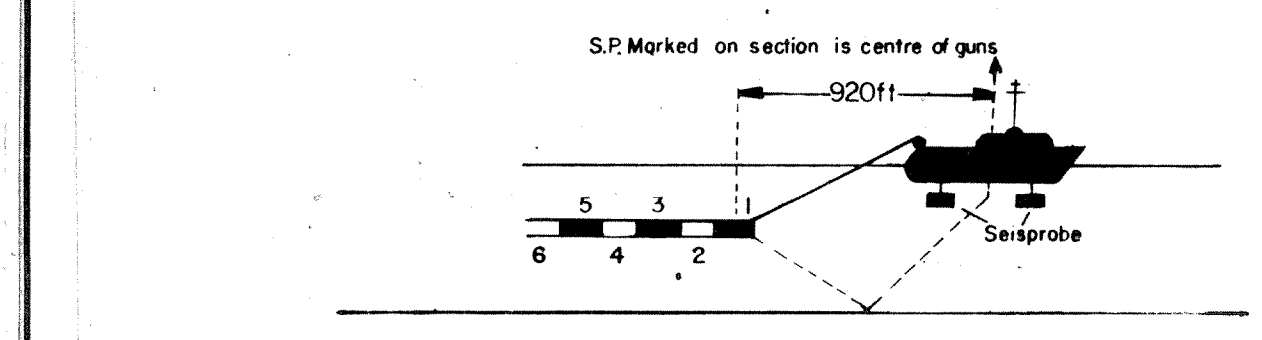
SEAGULL SICILY

LINE 7 SPS8065-8320

12 FOLD 24 TRACE

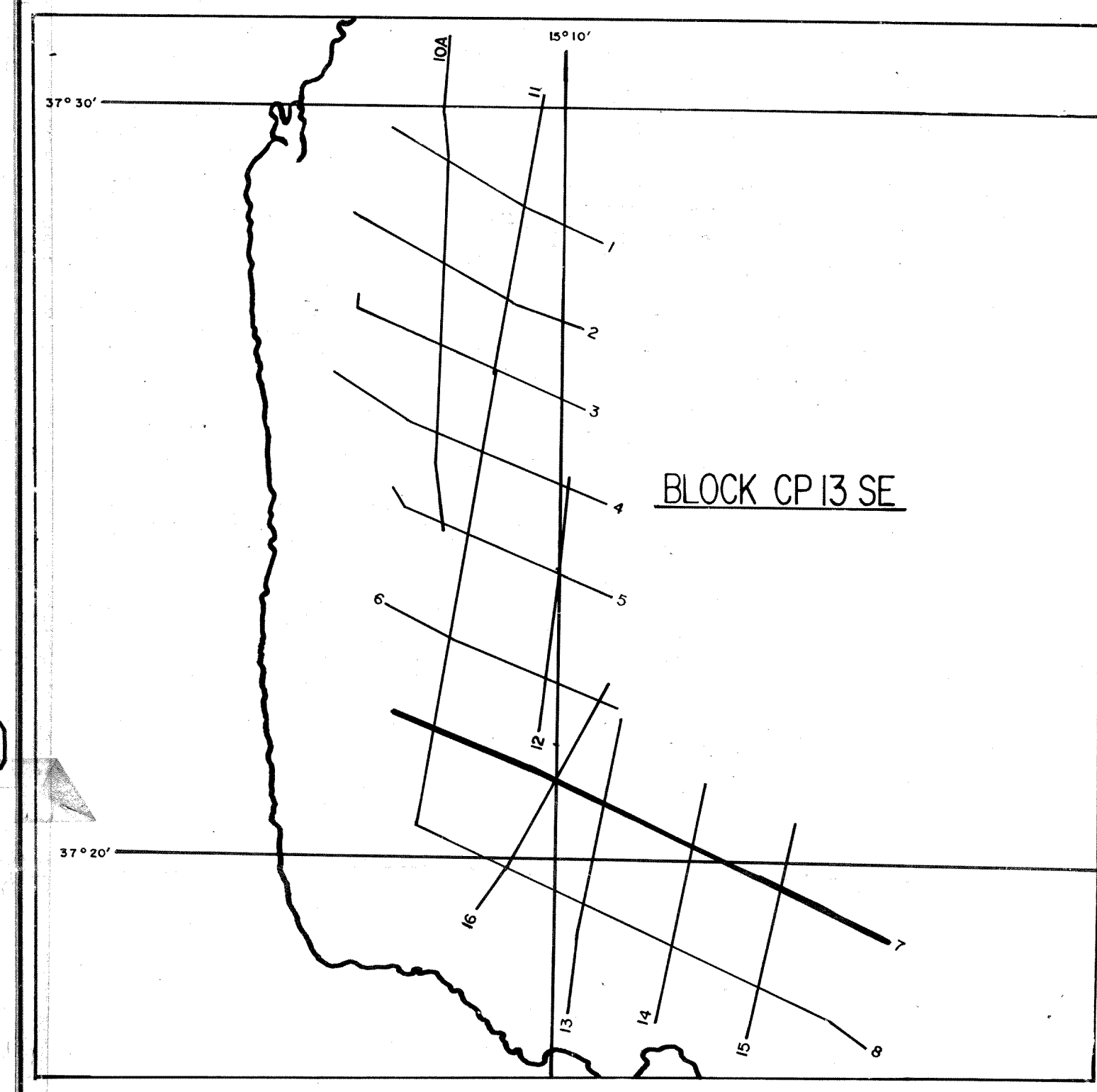
RECORDING DATA

SHOT BY S.S.L. PARTY 723 BOAT K/R TONDER APRIL 1974
 INSTRUMENTS- DFS 3 NEARS AND FARIS FORMAT CABLE- LENGTH 2400 METRES
 RECORD LENGTH- 6 SECONDS, 4 MS SAMPLE RATE GROUPS 48
 FIELD FILTERS- LOWCUT-8 HZ / SLOPE-1.8 DB/OCTAVE GEOPHONE ARRAY 30X1.5 M
 HIGHCUT-62 HZ / SLOPE-72 DB/OCTAVE SEISMOMETER TYPE- MULTIDYNE ACC. CANCELLING
 ENERGY SOURCE- ESSO SETSPROBE DEPTH 10-20 METERS SHOT INTERVAL 50 M
 ARRAY 4X2 GUNS DEPTH 10 METERS GROUP INTERVAL 50 M
 SURVEY- SHOT INTERVAL 50 M
 COVERAGE- 24 FOLD, 48 TRACE SURVEY- PRIMARY LORAN C
 TAPE FORMAT- 1/2 INCH 9 TRACK 800 BPI SEGA SURVEY- SECONDARY SAT. NAV.
 BOAT DIRECTION- DIRECTION OF INCREASING SHOTPOINTS
 POLARITY- COMPRESSONAL WAVE-POSITIVE NO. ON TAPE, BREAKS UP ON SECTION



PROCESSING DATA

TRUE AMPLITUDE RECOVERY AND SEISMIC EDIT
 DECONVOLUTION BEFORE STACK-
 NON-WHITENING GAPPED
 1 FILTER PER TRACE, 196 MS IN LENGTH WITH A 28 MS GAP
 DESIGN GATE- TRACE 1 ACCORDING TO NO. 1200-1300 MS TO MAX. TIME
 TRACE 24 ACCORDING TO NO. 360-550 MS TO MAX. TIME
 12 FOLD 24 TRACE COMMON DEPTH POINT GATHER UTILISING NEAR 24 GROUPS ONLY
 VELOCITY ANALYSIS- CONSTANT VELOCITY GATHER AND VARIABLE VELOCITY STACK/GATHER
 STATIC CORRECTION- FOR SHOT AND SEISMOMETER DEPTH 15 MS
 NORMAL MOVEOUT CORRECTION-
 FIRST BREAK SUPPRESSION- SEE TAPER-ON RECORD
 12 FOLD COMMON DEPTH POINT STACK
 DECONVOLUTION AFTER STACK-
 NON-WHITENING GAPPED
 1 FILTER PER TRACE, 356 MS IN LENGTH WITH A 28 MS GAP
 DESIGN GATE- 350 MS TO MAX. TIME



DATE PROCESSED- MAY/JUNE 1974

SP-8294

TIME	V-2MS	V-INT
0	4850	4850
200	4850	5086
400	4850	5086
625	5200	5086
710	5400	5086
775	5750	5042
825	6400	5200
1100	7800	11246
2000	9700	

SP-8224

TIME	V-2MS	V-INT
0	4850	4850
425	4850	5375
520	4950	5283
625	4950	5389
710	5400	5485
800	6000	5485
980	6400	10347
1150	7850	12165
2000	9650	

SP-8114

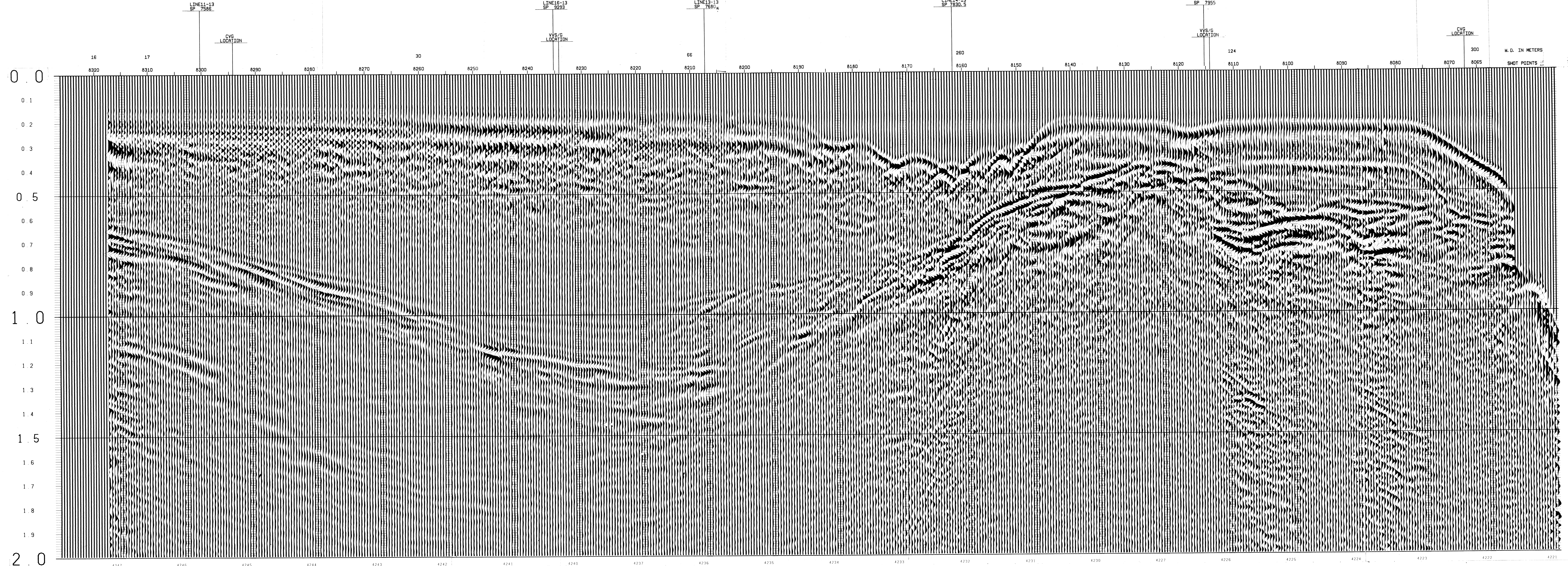
TIME	V-2MS	V-INT
0	4850	4850
425	4850	4970
520	4950	5108
625	4950	5095
710	5400	5157
800	6000	5157
980	6400	10347
1150	7850	12165
2000	9650	

SP-8067

TIME	V-2MS	V-INT
0	4850	4850
325	4850	5286
425	4850	4970
520	4950	5108
625	4950	5095
710	5400	5157
800	6000	5157
980	6400	10347
1150	7850	12165
2000	9650	

SP-8067

TIME	V-2MS	V-INT
0	4850	4850
325	4850	5286
425	4850	4970
520	4950	5108
625	4950	5095
710	5400	5157
800	6000	5157
980	6400	10347
1150	7850	12165
2000	9650	



LINE11-13
SP 7968

CVC
LOCATION

LINE13-13
SP 7893

VIS/G
LOCATION

LINE13-13
SP 7880.5

LINE14-13
SP 7850.5

LINE15-13
SP 7955

VIS/G
LOCATION

CVC
LOCATION

SHOT POINTS

N.O. IN METERS