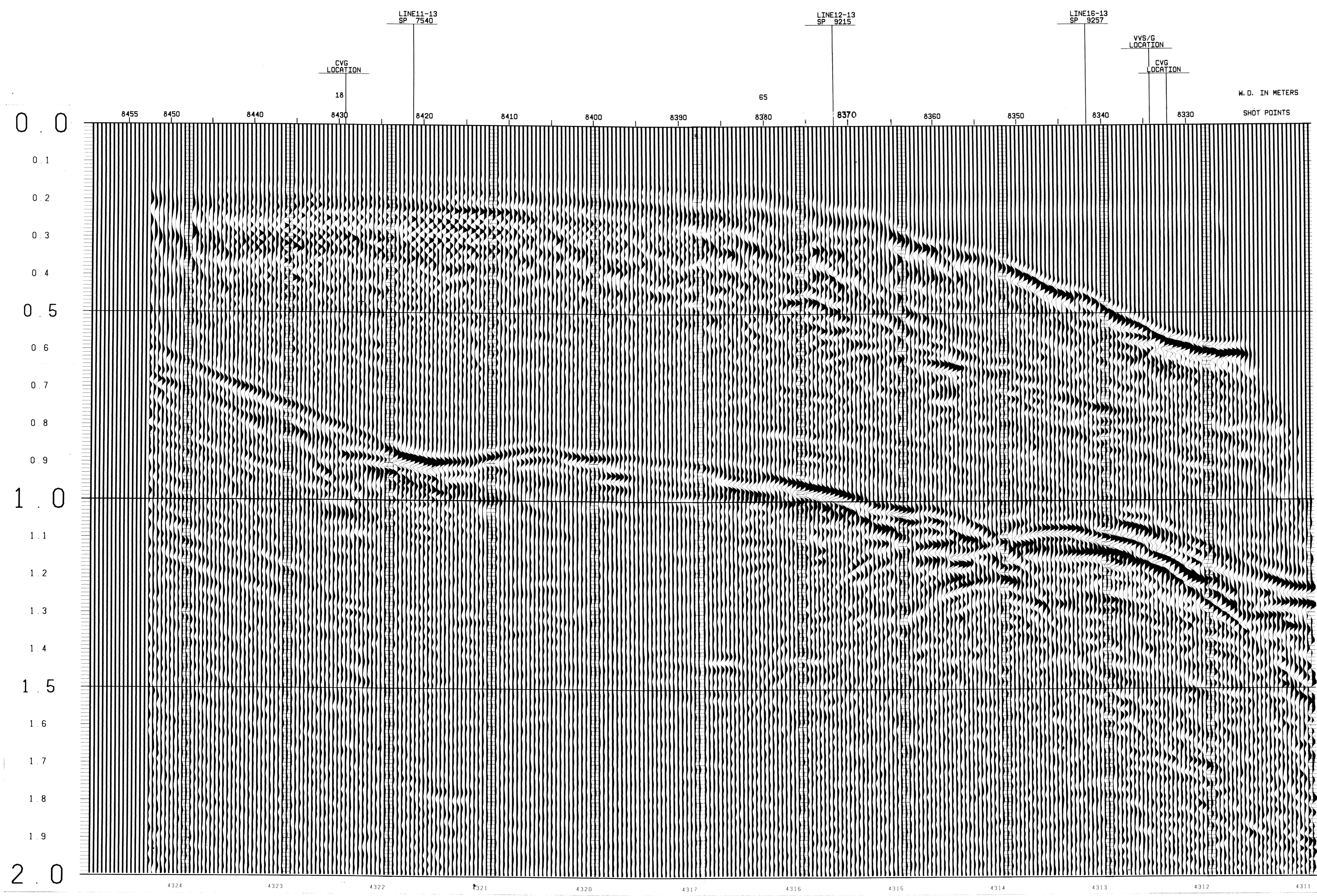


SP-8450	TIME	V-RMS	V-INT
0	4850		4850
200	4850		4850
380	5100		5364
500	5300		5886
600	5725		7497
650	6100		9509
800	6700		8842
800	6700		12402
2000	10500		

SP-8411	TIME	V-RMS	V-INT
0	4850		4850
200	4850		5371
375	5100		5906
530	5200		6434
720	5700		7210
950	6100		10856
1050	6700		13509
2000	10500		

SP-8370	TIME	V-RMS	V-INT
0	4850		4850
375	4850		5658
580	5150		6272
680	5300		6897
1025	5600		8284
1240	6150		9307
1450	6700		10365
2000	8100		

SP-8330	TIME	V-RMS	V-INT
0	4850		4850
490	4850		5273
910	5050		7877
950	5200		8410
1150	5400		9097
1325	6000		9878
1525	6800		9676
2000	7900		11067



SEAGULL SICILY

LINE 6 SPS8330-8455

12 FOLD 24 TRACE

RECORDING DATA

SHOT BY S.S.L. PARTY 723 BOAT K/R TONDER APRIL 1974

INSTRUMENTS- DFS 3 NEARS AND FARS FORMAT CABLE- LENGTH 2400 METRES

RECORD LENGTH- 6 SECONDS, 4 MS SAMPLE RATE GROUPS 48

FIELD FILTERS- LOWCUT-8 HZ / SLOPE-18 DB/OCTAVE GEOPHONE ARRAY 30X1.5 M

ENERGY SOURCE- HIGHCUT-62 HZ / SLOPE- 72 DB/OCTAVE SEISMOMETER TYPE- MULTIVINE ACC. CANCELLING

ESSO SEISPROBE ARRAY 4X2 GUNS DEPTH 10-20 METERS

DEPTH 10 METERS GROUP INTERVAL 50 M

24 FOLD, 48 TRACE SHOT INTERVAL 50 M

COVERAGE- 1/2 INCH 9 TRACK 800 BPI SEGA SURVEY- PRIMARY LORAN C

TAPE FORMAT- DIRECTION OF INCREASING SHOTPOINTS SECONDARY SAT. NAV.

BOAT DIRECTION- POLARITY- COMPRESSIONAL WAVE- POSITIVE NO. ON TAPE, BREAKS UP ON SECTION

RISERVATO

PROCESSING DATA

TRUE AMPLITUDE RECOVERY AND SEISMIC EDIT

DECONVOLUTION BEFORE STACK-

NON-WHITENING GAPPED

1 FILTER PER TRACE, 196 MS IN LENGTH WITH A 28 MS GAP

DESIGN GATE- TRACE 1 ACCORDING TO WD, 1200-1300 MS TO MAX. TIME

TRACE 24 ACCORDING TO WD, 360- 550 MS TO MAX. TIME

12 FOLD 24 TRACE COMMON DEPTH POINT GATHER UTILISING NEAR 24 GROUPS ONLY

VELOCITY ANALYSIS- CONSTANT VELOCITY GATHER AND VARIABLE VELOCITY STACK/GATHER

STATIC CORRECTION- FOR SHOT AND SEISMOMETER DEPTH 15 MS

NORMAL MOVEOUT CORRECTION

FIRST BREAK SUPPRESSION- SEE TAPER-ON RECORD

12 FOLD COMMON DEPTH POINT STACK

DECONVOLUTION AFTER STACK-

NON-WHITENING GAPPED

1 FILTER PER TRACE, 356 MS IN LENGTH WITH A 28 MS GAP

DESIGN GATE- 350 MS TO MAX. TIME

