

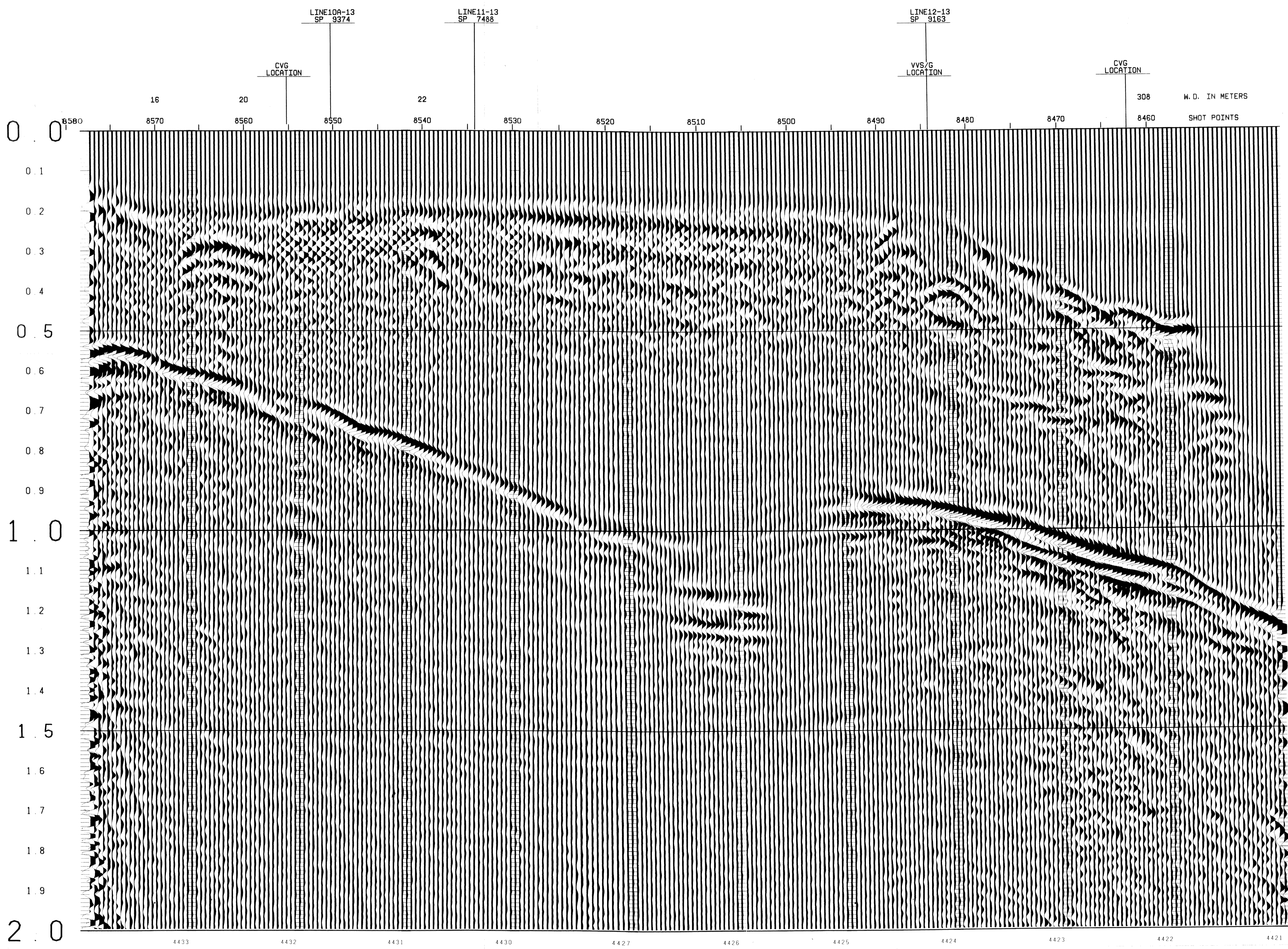


TIME	V-RMS	V-INT
0	4850	4850
200	4850	5252
410	5060	5390
550	5200	6310
640	5370	8340
750	5900	8998
1000	6775	12430
1200	8000	12430
2000	9300	10964

TIME	V-RMS	V-INT
0	4850	4850
235	4850	5000
700	4950	5410
800	5010	5664
920	5100	7828
1150	5750	9192
1320	6300	11236
1650	7550	12006
2000	8500	12006

TIME	V-RMS	V-INT
0	4850	4850
260	4850	4960
475	4900	5748
610	5100	5370
780	5160	7989
1000	5900	7397
1200	6175	11671
1515	7650	11684
2000	8800	11684

TIME	V-RMS	V-INT
0	4850	4850
425	4850	5151
630	4950	5432
715	5010	5650
825	5100	7206
1075	5660	9147
1150	5950	10913
1550	7550	11505
2000	8600	11505



SEAGULL SICILY

LINE 5 SPS8460-8580



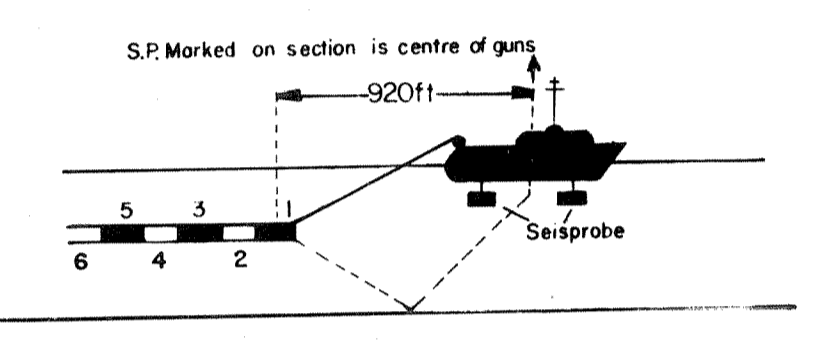
12 FOLD 24 TRACE

RECORDING DATA



SHOT BY S.S.L. PARTY 723 BOAT K/R TONDER APRIL 1974
 INSTRUMENTS- DFS 3 NEARS AND FARS FORMAT
 RECORD LENGTH- 6 SECONDS, 4 MS SAMPLE RATE
 FIELD FILTERS- LOWCUT-8 HZ / SLOPE-18 DB/OCTAVE
 HIGHCUT-62 HZ / SLOPE- 72 DB/OCTAVE
 ENERGY SOURCE- ESSO SEISPROBE
 ARRAY 4X2 GUNS
 DEPTH 10 METERS
 COVERAGE- 24 FOLD, 48 TRACE
 TAPE FORMAT- 1/2 INCH 9 TRACK 800 BPI SEGA
 BOAT DIRECTION- DIRECTION OF INCREASING SHOTPOINTS
 POLARITY- COMPRESSIONAL WAVE-POSITIVE NO. ON TAPE, BREAKS UP ON SECTION

CABLE- LENGTH 2400 METRES
 GROUPS 48
 GEOPHONE ARRAY 30X1.5 M
 SEISMOMETER TYPE- MULTIDYNE ACC. CANCELLING
 DEPTH 10-20 METERS
 GROUP INTERVAL 50 M
 SHOT INTERVAL 50 M
 SURVEY- PRIMARY LORAN C
 SECONDARY SAT. NAV.



PROCESSING DATA

TRUE AMPLITUDE RECOVERY AND SEISMIC EDIT
 DECONVOLUTION BEFORE STACK-
 NON-WHITENING GAPPED
 1 FILTER PER TRACE, 196 MS IN LENGTH WITH A 28 MS GAP
 DESIGN GATE- TRACE 1 ACCORDING TO WD, 1200-1300 MS TO MAX. TIME
 TRACE 24 ACCORDING TO WD, 360- 550 MS TO MAX. TIME

12 FOLD 24 TRACE COMMON DEPTH POINT GATHER UTILISING NEAR 24 GROUPS ONLY
 VELOCITY ANALYSIS- CONSTANT VELOCITY GATHER AND VARIABLE VELOCITY STACK/GATHER
 STATIC CORRECTION- FOR SHOT AND SEISMOMETER DEPTH 15MS
 NORMAL MOVEOUT CORRECTION
 FIRST BREAK SUPPRESSION- SEE TAPER-ON RECORD
 12 FOLD COMMON DEPTH POINT STACK
 DECONVOLUTION AFTER STACK-
 NON-WHITENING GAPPED
 1 FILTER PER TRACE, 356 MS IN LENGTH WITH A 28 MS GAP
 DESIGN GATE- 350 MS TO MAX. TIME

